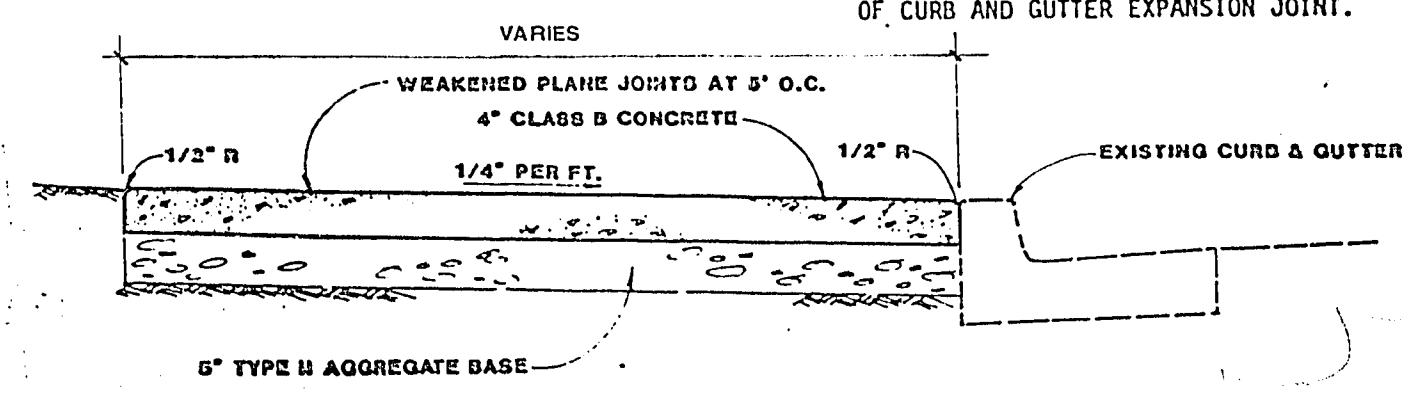


JOB NO. 671.004

138799 8/84 DIETRICH-POST 83329

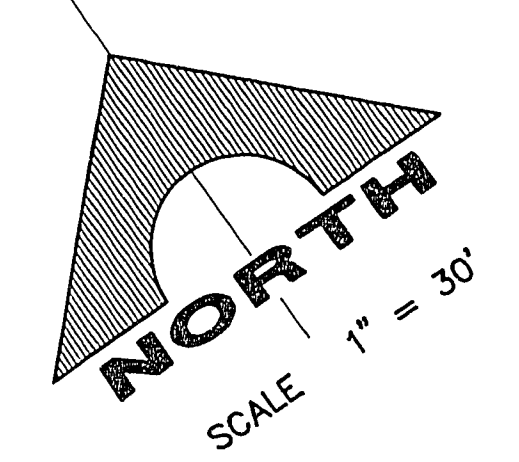
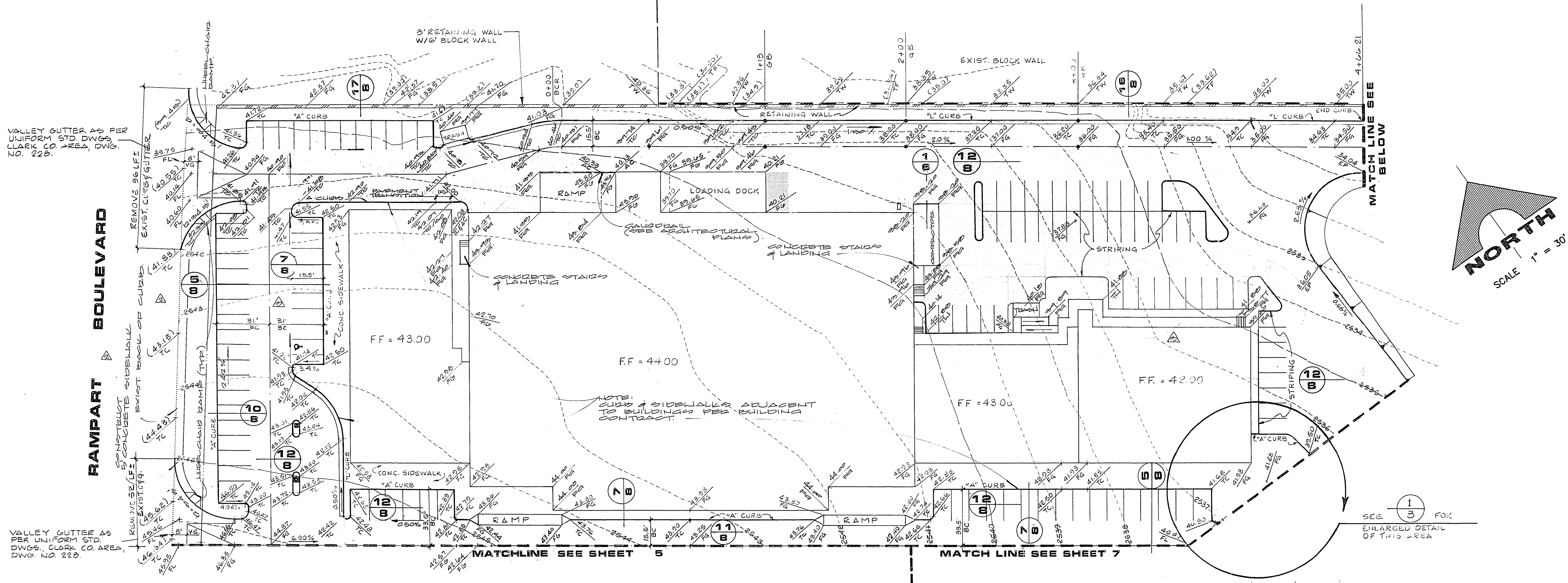
NOTE:  
1/2" EXPANSION JOINT AT 30' INTERVALS, AT COLD JOINTS AND AT BEGINNING AND END OF RETURN. EXPANSION JOINTS TO MATCH LOCATION OF CURB AND GUTTER EXPANSION JOINT.



SIDEWALK SECTION  
NO SCALE  
FOR ADDITIONAL DETAIL SEE UNIFORM STD DWG # 234

FUTURE SOUTH SHORES RAMPART UNIT NO. 4  
UNDER CONSTRUCTION

EXIST. SOUTH SHORES RAMPART UNIT NO. 3



VALLEY GUTTER AS PER UNIFORM STD. DWG. NO. 228.

VALLEY GUTTER AS PER UNIFORM STD. DWG. NO. 228.

NOTE: CURB & SIDEWALK ADJACENT TO BUILDING PER BUILDING CONTRACT.

SEE 1/3 FOR ENLARGED DETAIL OF THIS AREA

I CERTIFY THAT THIS GRADING PLAN IS IN CONFORMANCE WITH THE APPROVED DRAINAGE STUDY ON FILE AT THE CITY OF LAS VEGAS FOR THIS PROJECT.

NOTE:  
EXISTING TOPOGRAPHY SHOWN ON THIS PLAN WAS COMPILED IN APRIL, 1990. G.C. WALLACE, INC. BEARS NO RESPONSIBILITY FOR THE ACCURACY OF THE EXISTING TOPOGRAPHY. THE EARTH WORK CALCULATIONS ARE BASED ON THIS TOPO AND MAY NOT DEPICT ACCURATELY THE EXISTING CONDITIONS.

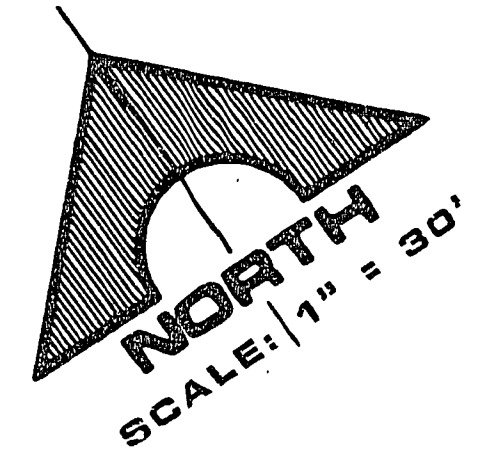
DESCRIPTION	DATE	REV
1.00	11/11/91	1
1.01	11/11/91	2
1.02	11/11/91	3
1.03	11/11/91	4
1.04	11/11/91	5
1.05	11/11/91	6
1.06	11/11/91	7
1.07	11/11/91	8
1.08	11/11/91	9
1.09	11/11/91	10
1.10	11/11/91	11
1.11	11/11/91	12
1.12	11/11/91	13
1.13	11/11/91	14
1.14	11/11/91	15
1.15	11/11/91	16
1.16	11/11/91	17
1.17	11/11/91	18
1.18	11/11/91	19
1.19	11/11/91	20
1.20	11/11/91	21
1.21	11/11/91	22
1.22	11/11/91	23
1.23	11/11/91	24
1.24	11/11/91	25
1.25	11/11/91	26
1.26	11/11/91	27
1.27	11/11/91	28
1.28	11/11/91	29
1.29	11/11/91	30
1.30	11/11/91	31
1.31	11/11/91	32
1.32	11/11/91	33
1.33	11/11/91	34
1.34	11/11/91	35
1.35	11/11/91	36
1.36	11/11/91	37
1.37	11/11/91	38
1.38	11/11/91	39
1.39	11/11/91	40
1.40	11/11/91	41
1.41	11/11/91	42
1.42	11/11/91	43
1.43	11/11/91	44
1.44	11/11/91	45
1.45	11/11/91	46
1.46	11/11/91	47
1.47	11/11/91	48
1.48	11/11/91	49
1.49	11/11/91	50
1.50	11/11/91	51
1.51	11/11/91	52
1.52	11/11/91	53
1.53	11/11/91	54
1.54	11/11/91	55
1.55	11/11/91	56
1.56	11/11/91	57
1.57	11/11/91	58
1.58	11/11/91	59
1.59	11/11/91	60
1.60	11/11/91	61
1.61	11/11/91	62
1.62	11/11/91	63
1.63	11/11/91	64
1.64	11/11/91	65
1.65	11/11/91	66
1.66	11/11/91	67
1.67	11/11/91	68
1.68	11/11/91	69
1.69	11/11/91	70
1.70	11/11/91	71
1.71	11/11/91	72
1.72	11/11/91	73
1.73	11/11/91	74
1.74	11/11/91	75
1.75	11/11/91	76
1.76	11/11/91	77
1.77	11/11/91	78
1.78	11/11/91	79
1.79	11/11/91	80
1.80	11/11/91	81
1.81	11/11/91	82
1.82	11/11/91	83
1.83	11/11/91	84
1.84	11/11/91	85
1.85	11/11/91	86
1.86	11/11/91	87
1.87	11/11/91	88
1.88	11/11/91	89
1.89	11/11/91	90
1.90	11/11/91	91
1.91	11/11/91	92
1.92	11/11/91	93
1.93	11/11/91	94
1.94	11/11/91	95
1.95	11/11/91	96
1.96	11/11/91	97
1.97	11/11/91	98
1.98	11/11/91	99
1.99	11/11/91	100

DESIGNED BY: Jack H. Mitchell  
CHECKED BY: Jack H. Mitchell  
DATE: 3.3.93  
P.E. NO. 3343

G.C. WALLACE, INC.  
Engineering/Architecture  
1555 SOUTH RAINBOW BLVD. LAS VEGAS, NEVADA 89102

LAS VEGAS/RAMPART RPR ASSOCIATES II  
SOUTH SHORES CENTER  
GRADING PLAN II

SHEET 8 OF 10 SHEETS



75-3-01 107-V1874