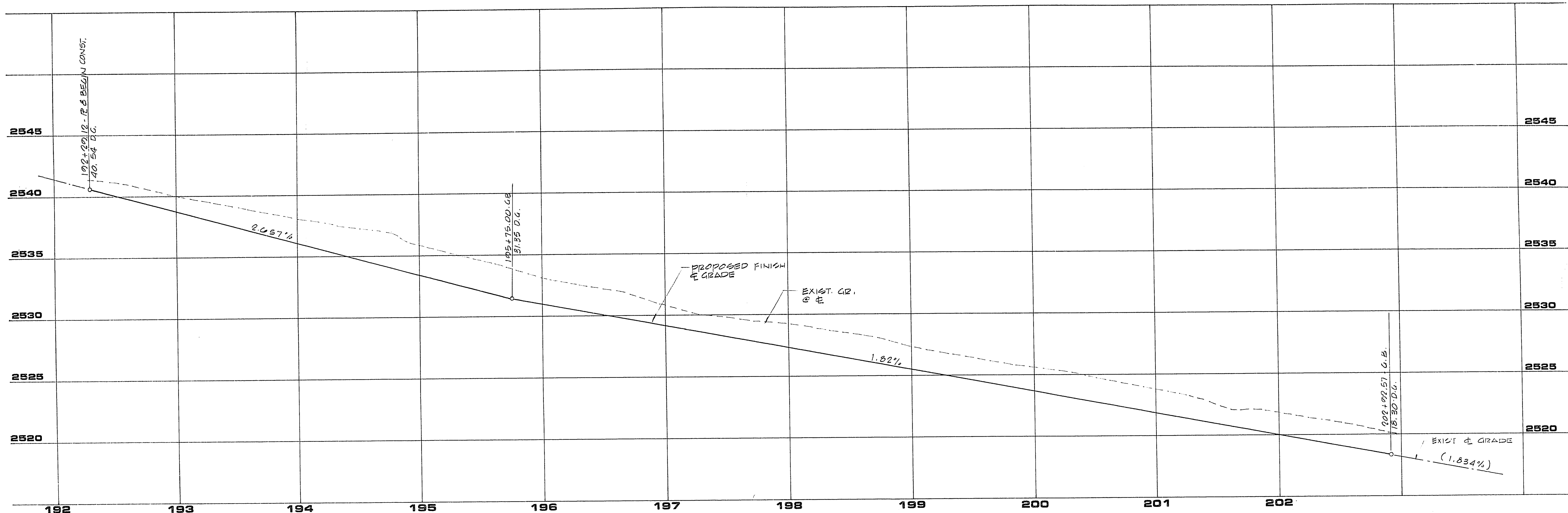
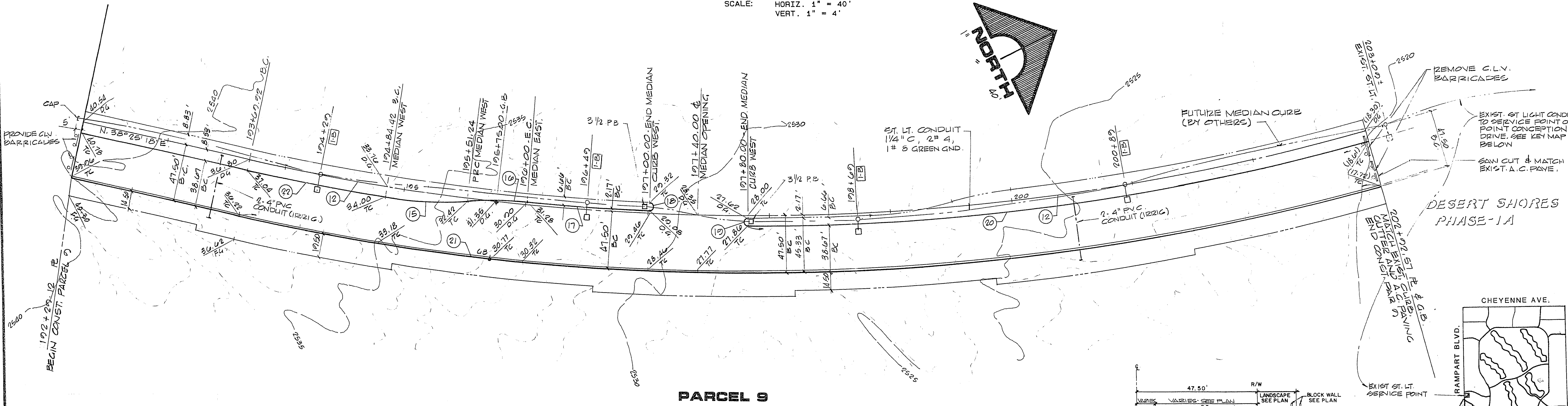
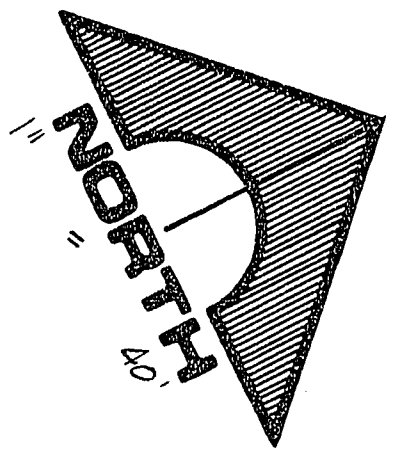


JOB NO. 712.007



**PROFILE**  
SCALE: HORIZ. 1" = 40'  
VERT. 1" = 4'

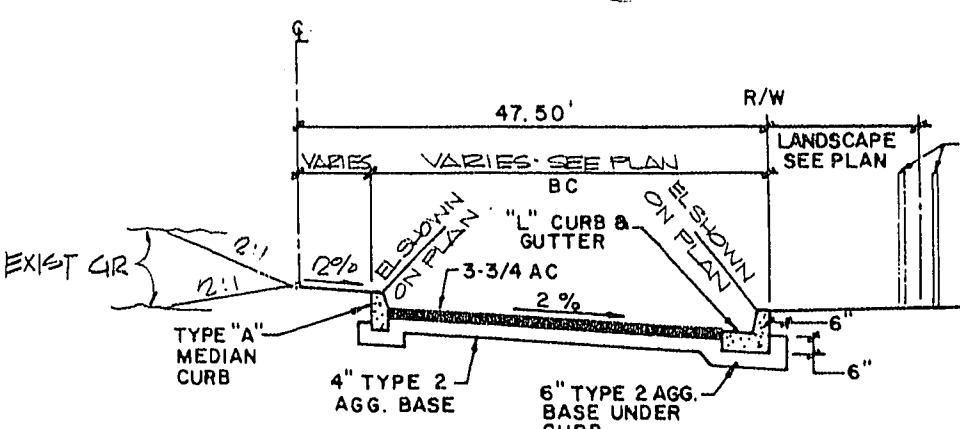


**PARCEL 9**

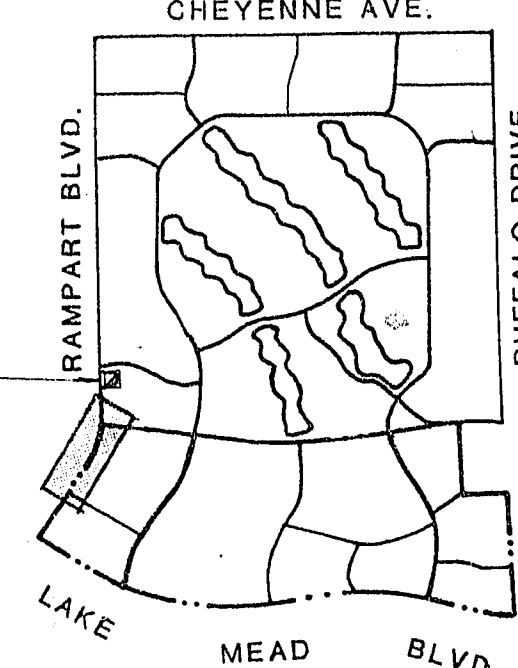
**B.C.R. CURVE DATA**

NO.	Δ	R	L	T
12	28° 04' 54"	882.50'	722.65'	470.77
15	12° 53' 00"	300.00	67.47	33.87
16	7° 21' 56"	300.00	47.04	24.57
17	3° 02' 37"	1550.33'	77.87	47.75
18	180° 00' 00"	3.33'	10.46	~
19	180° 00' 00"	3.33'	10.46	~
20	15° 36' 02"	1871.33	514.73	250.07

**RAMPART BLVD.**



- NOTES:**
- STRUCTURAL SECTION OF STREET TO CONFORM TO C.L.V. STANDARD DRAWINGS.
  - NATIVE MATERIAL MAY BE USED IN LIEU OF TYPE I WHEN PROCESSED FOR APPROVAL IN ACCORDANCE WITH CITY OF LAS VEGAS STATEMENT OF POLICY DATED 7/25/84.



**KEY MAP**

N/A

CLV CHIEF LAND DEVELOPMENT

DATE

RECOMMENDED	DATE	DESCRIPTION
REV		
1	5/18/82	3343
2	5/18/82	REVISION

RECOMMENDED: *Paul H. Mitchell*

155 SOUTH RAINBOW BLVD., LAS VEGAS, NEVADA 89102

**G.C. WALLACE, INC.**  
Engineering/Architecture

**A & G RENTALS**  
SOUTH SHORES - PHASE 2  
RAMPART BLVD.  
STA. 192+29.12 TO STA. 202+92.57

SHEET **2**  
OF 2 SHEETS