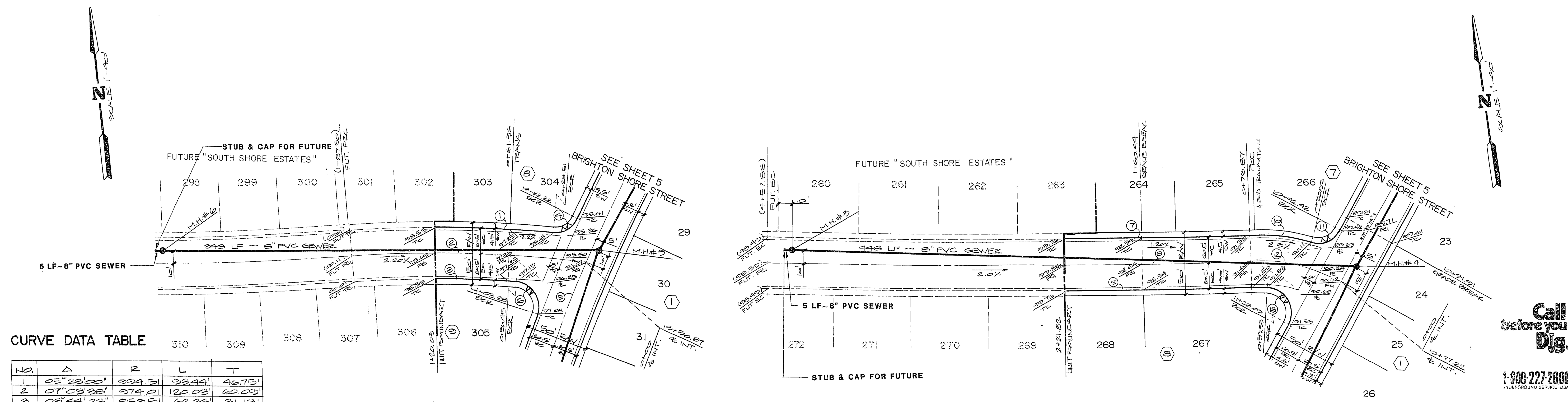


REVISION	BY	DATE

ES! ENGINEERS & SURVEYORS INC.
7018 W. CHARLESTON
PAUL E. VALENTE
REGISTERED PROFESSIONAL ENGINEER
NO. 3916

SUBMITTED BY: *Charles E. ...*

3 2 1 0+00 4 3 2 1 0+00



CURVE DATA TABLE

Δ	R	L	T
1	05° 22' 00"	924.51	46.75
2	07° 03' 28"	974.01	60.00
3	08° 44' 23"	952.51	62.24
4	09° 53' 50"	20.00	24.41
5	15° 23' 21"	1250.00	246.03
6	16° 53' 42"	22.00	27.52
7	01° 12' 54"	6226.50	147.20
8	01° 12' 54"	6227.00	147.73
9	01° 12' 54"	6227.50	148.17
10	16° 24' 08"	170.50	24.57
11	75° 42' 30"	22.00	26.45
12	28° 12' 57"	152.00	73.87
13	115° 17' 46"	20.00	40.25

HOLLOW WHARF DRIVE

QUANTITY ESTIMATE

20" ASPHALTIC CONCRETE PAVING	1,152 SF
20" "ROLL" TYPE CURB & GUTTER	512 LF
CONCRETE SIDEWALK	2,820 SF
CONCRETE VALLEY GUTTER	1,532 SF

NOTE: THESE QUANTITIES ARE ONLY ESTIMATED, CONTRACTOR TO VERIFY

SWAN LAKE AVENUE

BENCHMARK
TOP OF B.L.M. BRASS CAP E. 1/4
ON CHEYENNE 1/4 MILE WEST OF
BUFFALO
ELEVATION: 2388.62 FEET

Call before you Dig.
1-800-227-2600
SUBSURFACE SERVICE, L.P.

STREET & SEWER PLAN & PROFILE
(HOLLOW WHARF DRIVE & SWAN LAKE AVENUE)

SOUTH SHORE ESTATES UNIT NO. 2

NO. 3916

BY: TKHA, SERRA

DATE: 8-83

SCALE: H = 1" = 40'
V = 1" = 4'

SHEET: **4**
OF 8 SHEETS