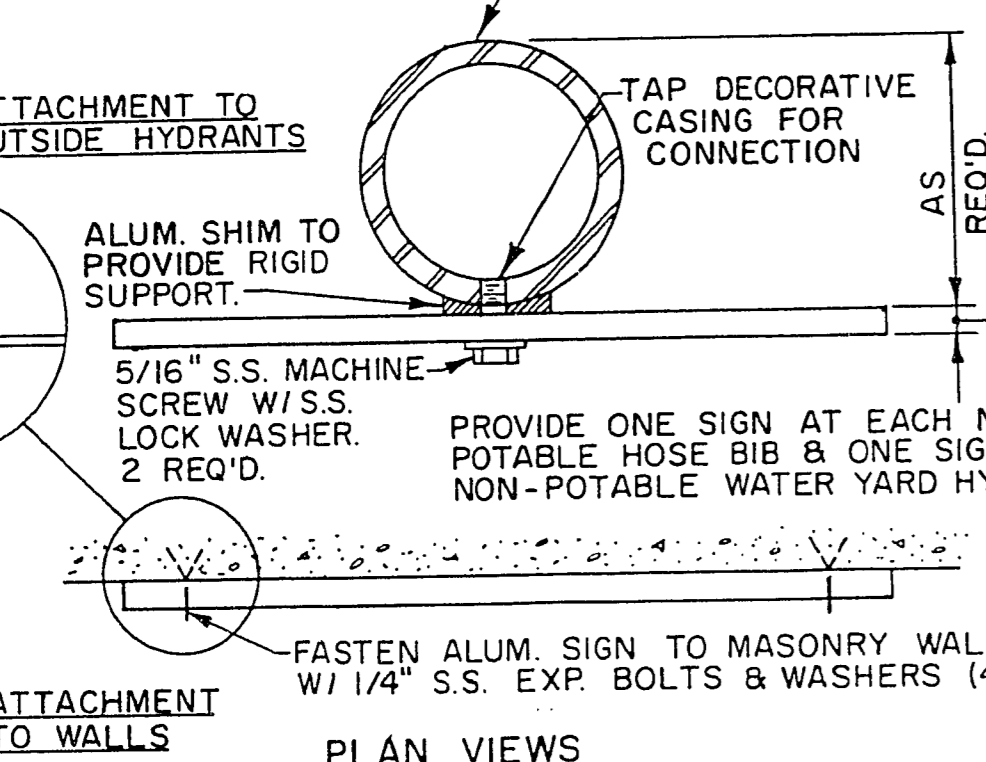
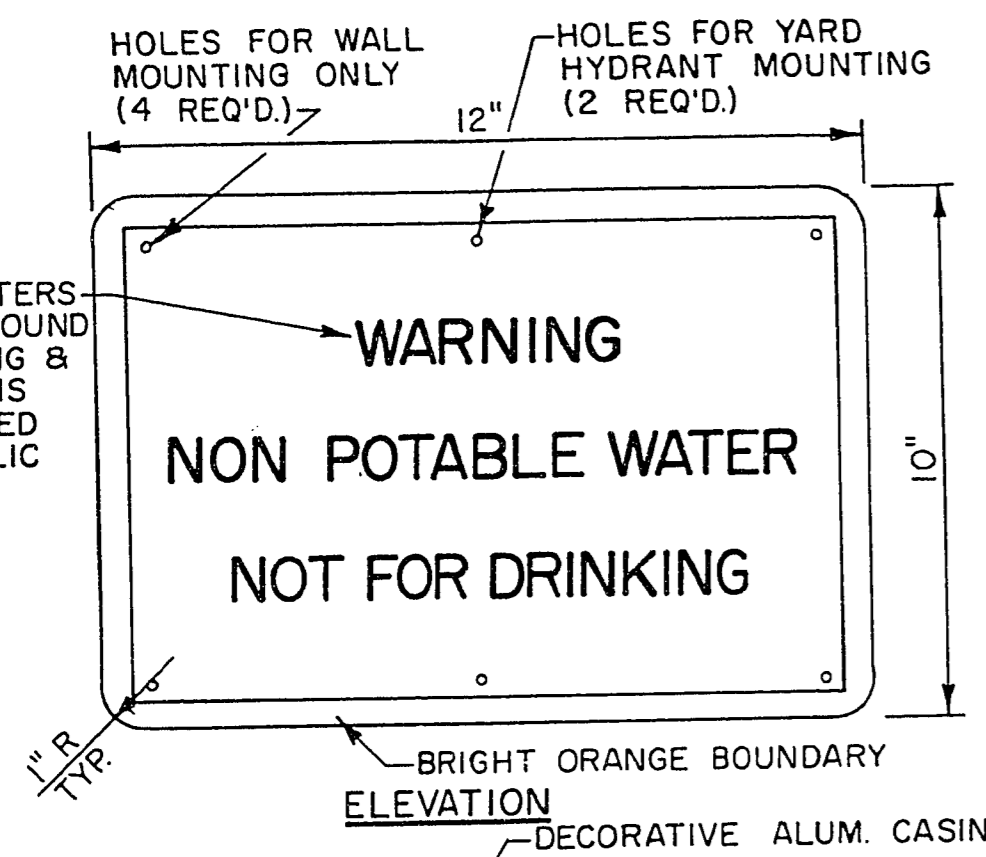
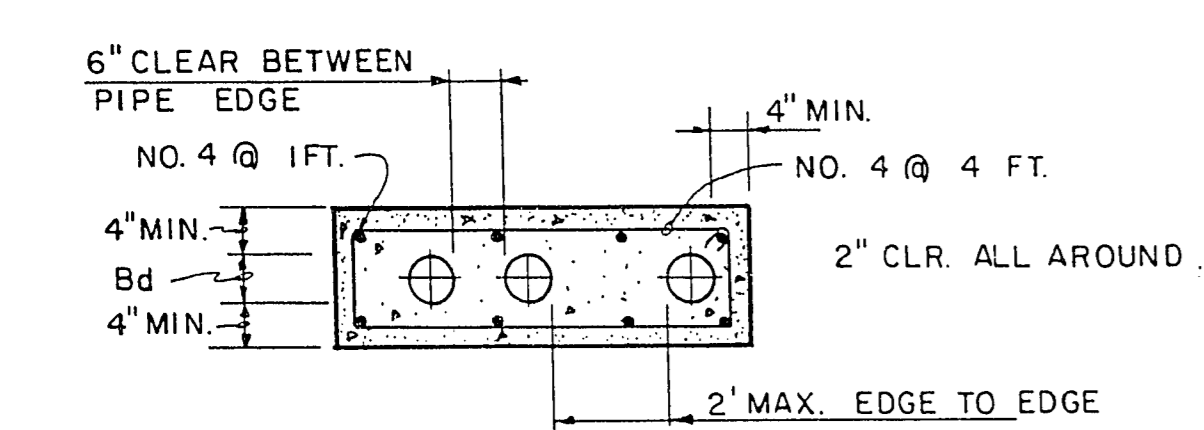


BLACK 1/2" LETTERS ON WHITE BACKGROUND INSURE LETTERING & COLOR COATING IS WEATHER PROOFED BY CLEAR ACRYLIC SHIELDING.

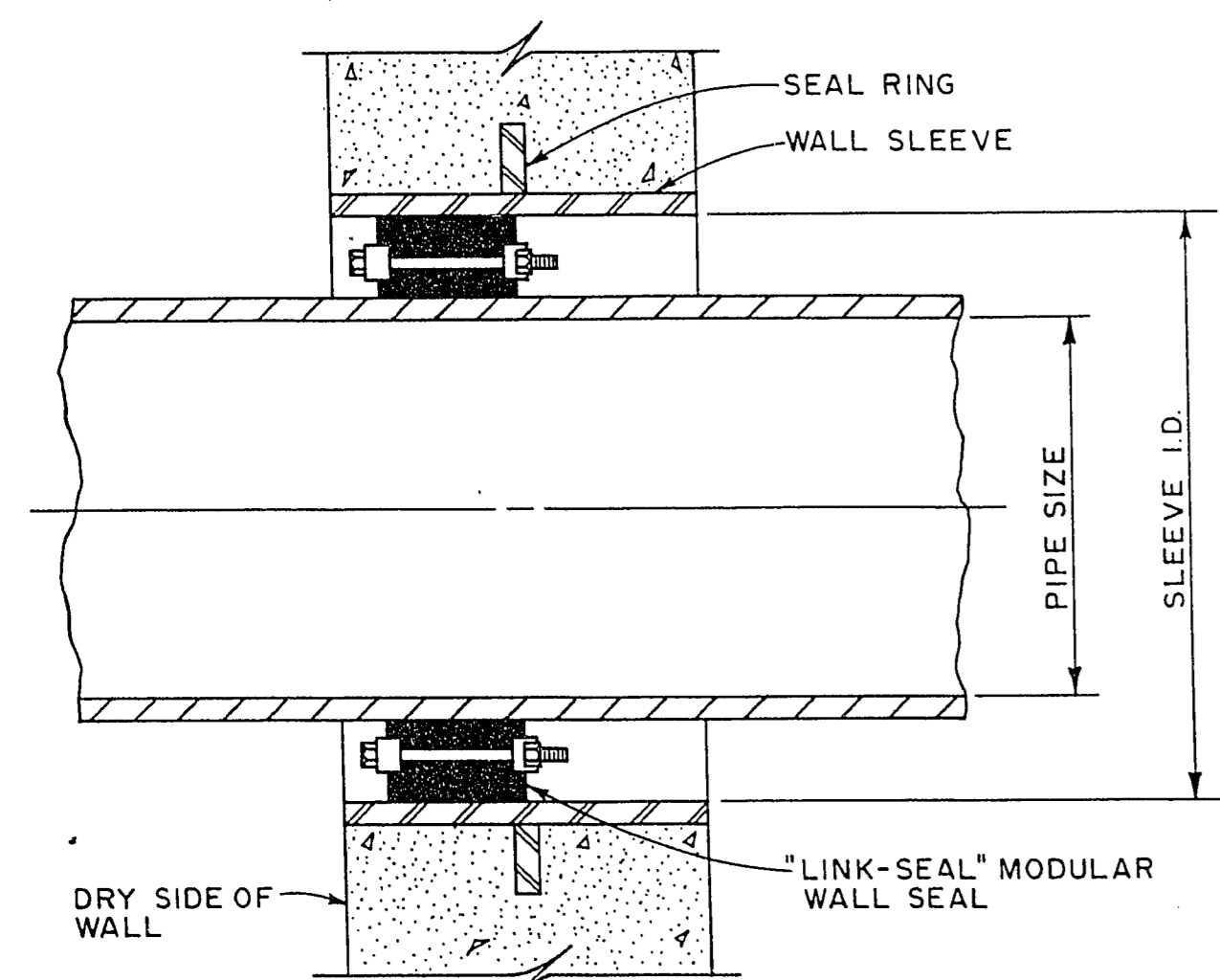


TYP. SIGN MOUNTING DETAIL

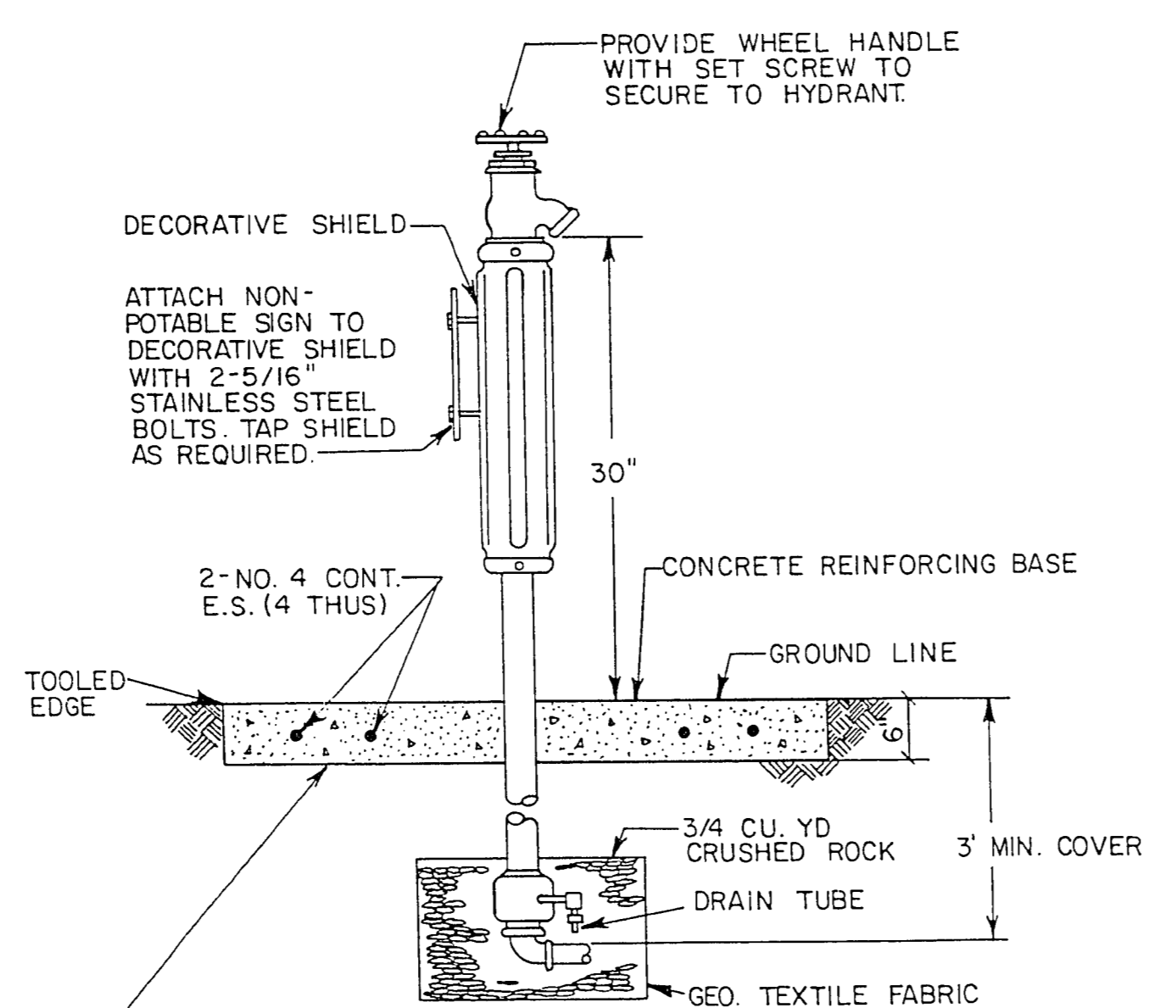


NOTE: EXTEND CONCRETE CASING A MINIMUM OF 2 FEET BEYOND CURB LINE.  
Bd = NOMINAL PIPE DIAMETER.

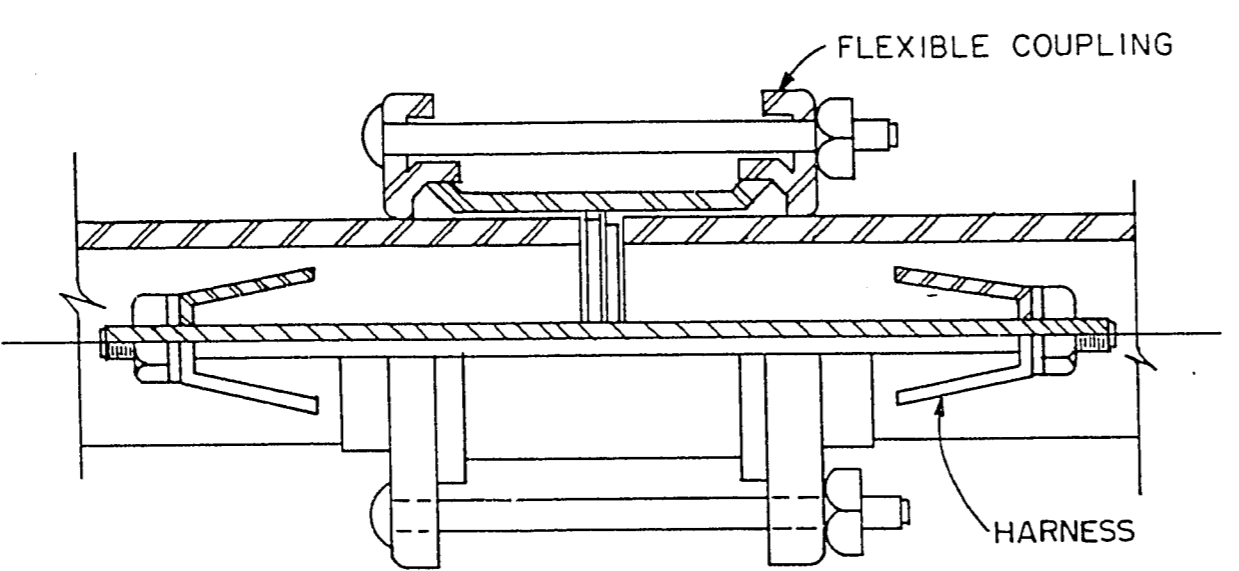
TYPICAL ROAD CROSSING DETAIL FOR PIPE 8" AND SMALLER



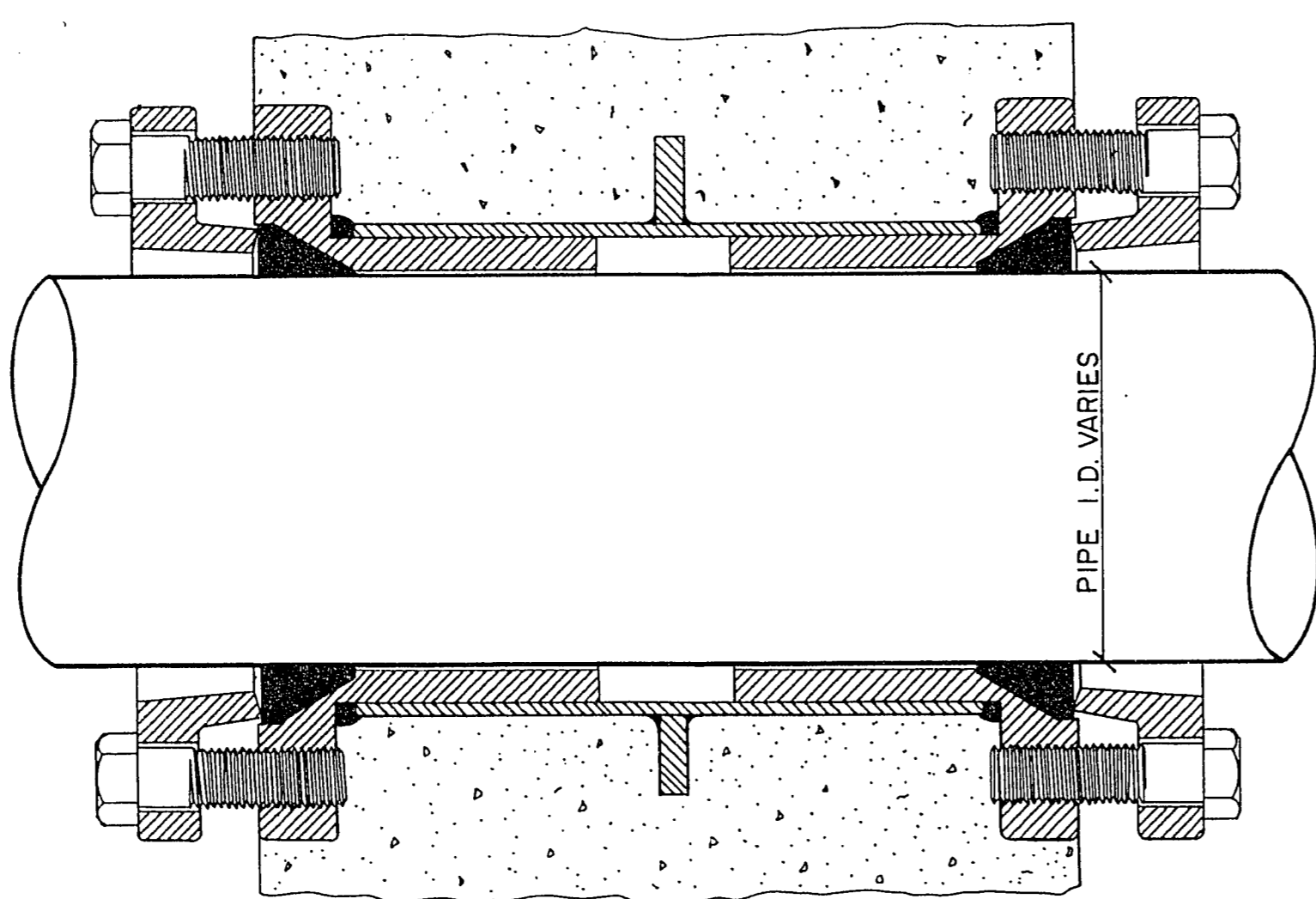
TYPICAL WALL SLEEVE & LINK-SEAL DETAIL (PLAN-SECTION)



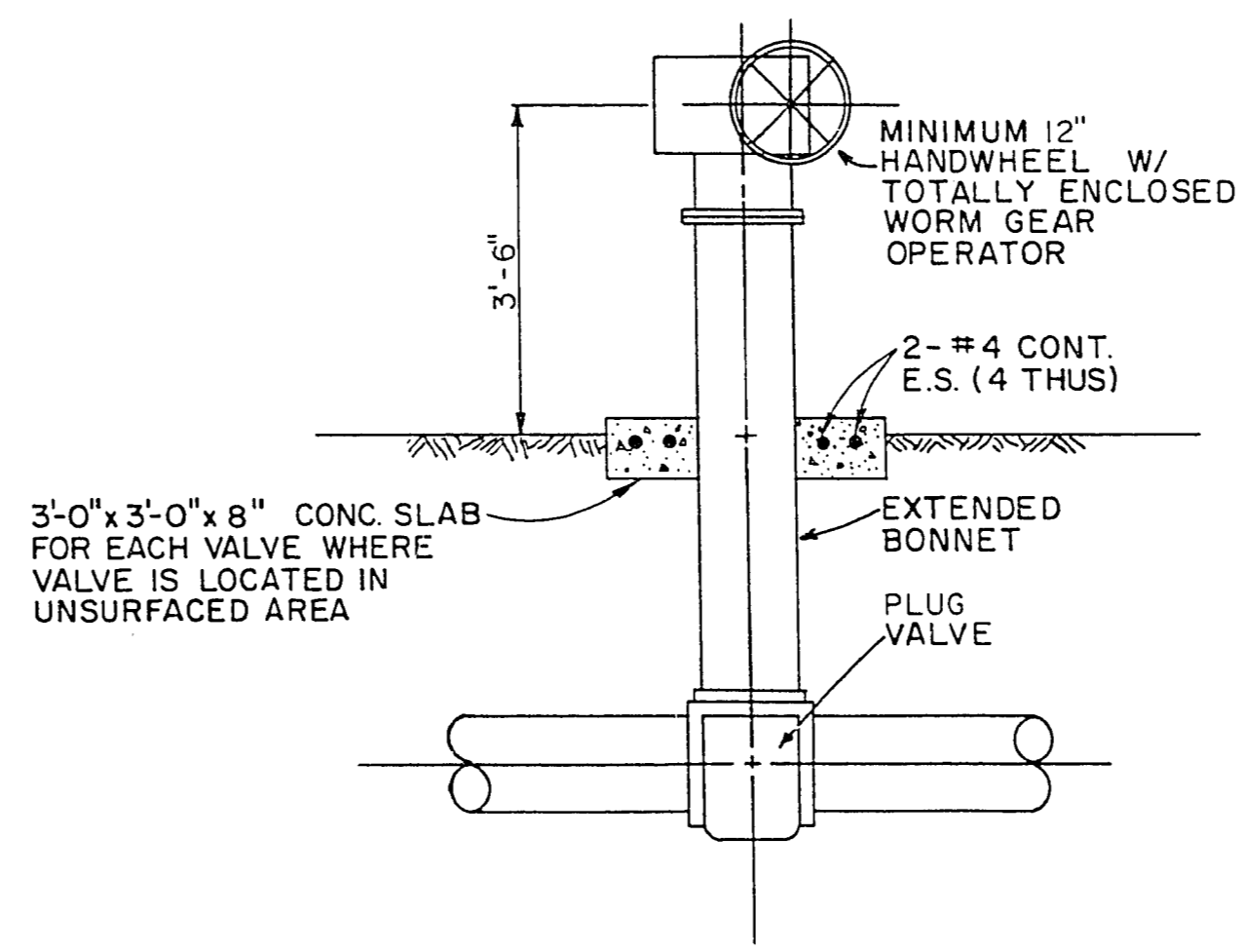
TYPICAL NON-FREEZE SERVICE WATER YARD HYDRANT DETAIL (YH-1)



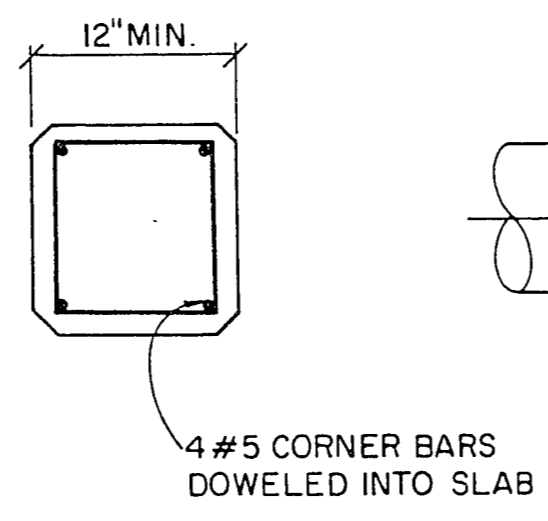
HARNESSED MECHANICAL COUPLING



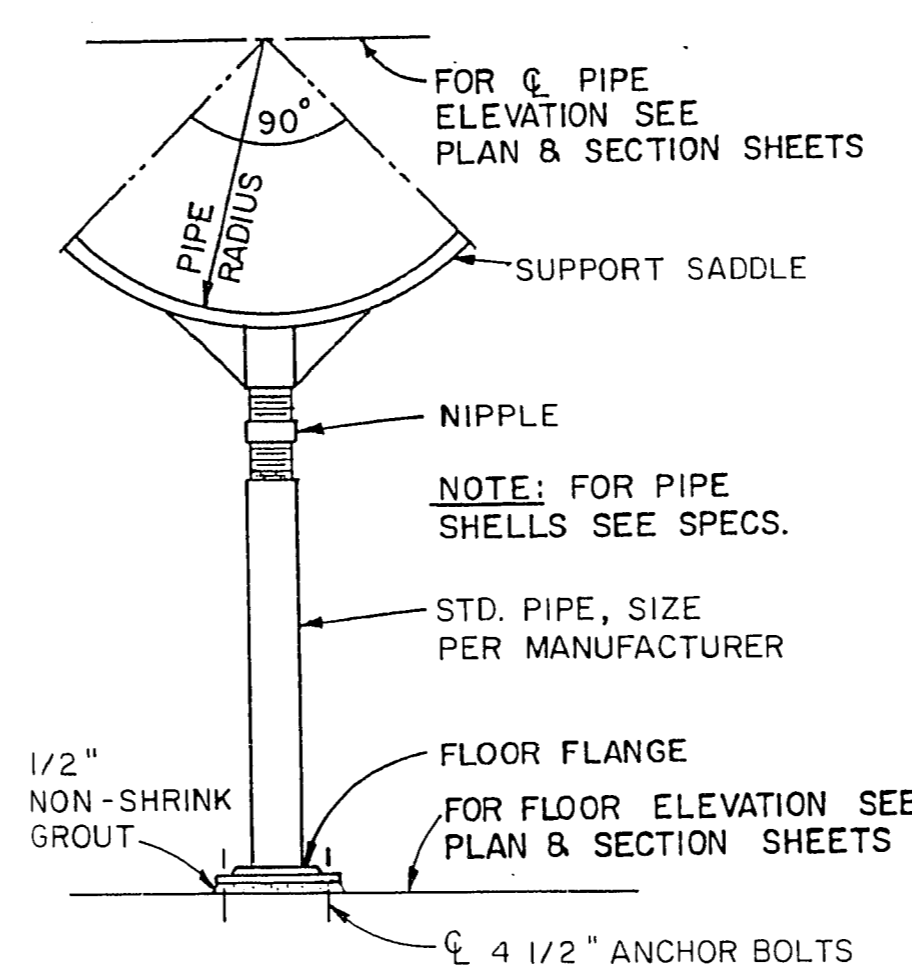
MECHANICAL JOINT SLEEVE



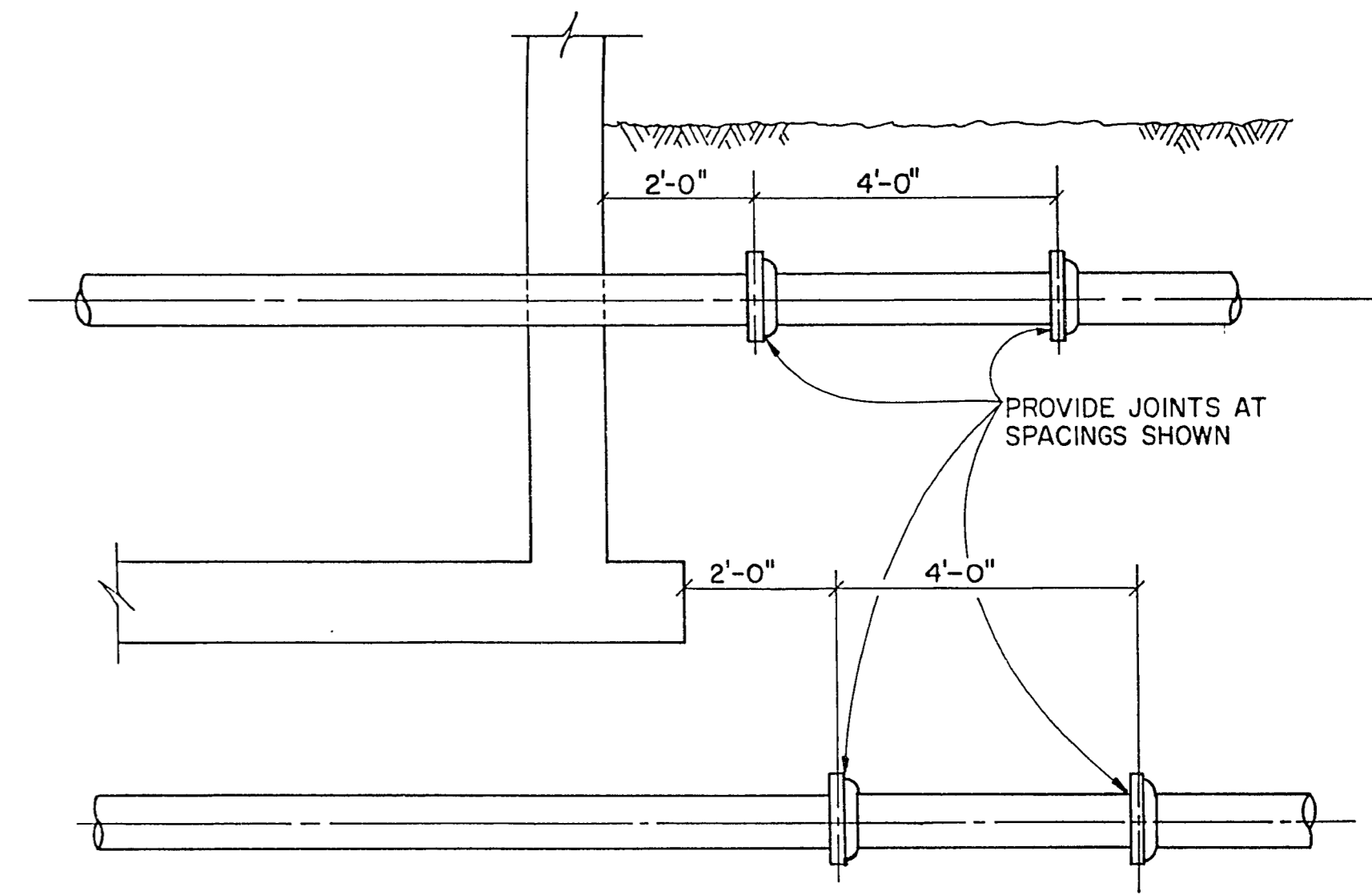
BURIED PLUG VALVE W/ EXTENDED OPERATOR



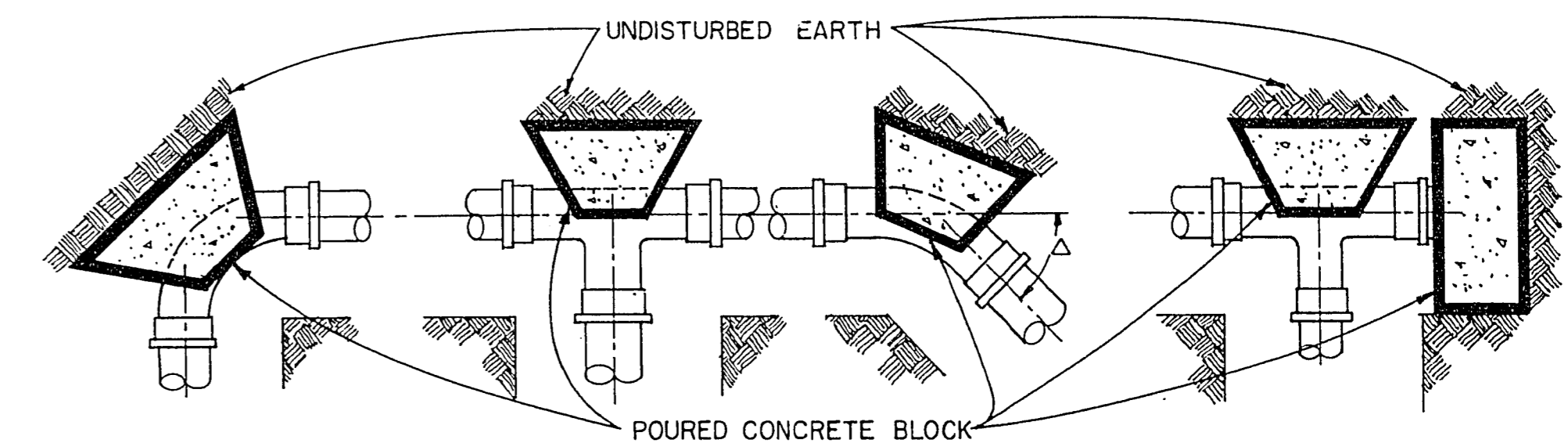
TYP. BASE ELBOW CONCRETE SUPPORT DETAIL



METAL PIPE SUPPORT DETAIL

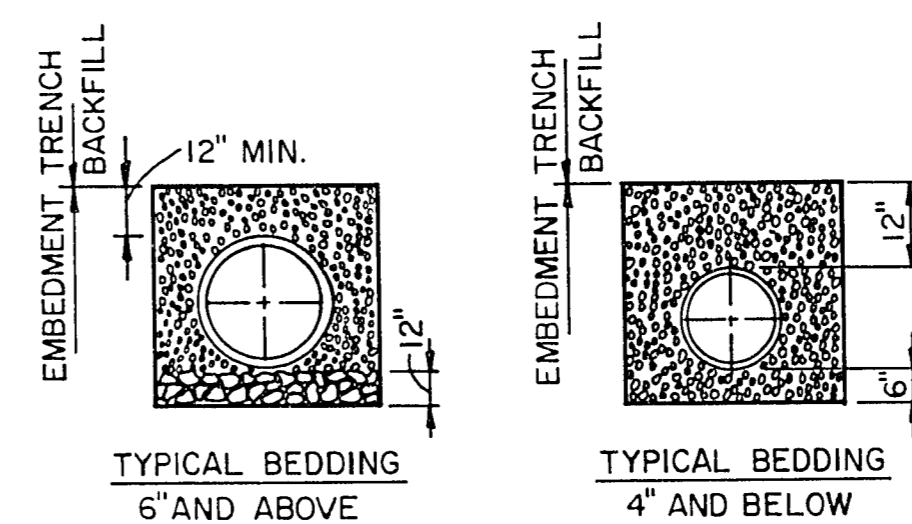


TYPICAL PIPE CONNECTIONS LEAVING OR UNDER STRUCTURES

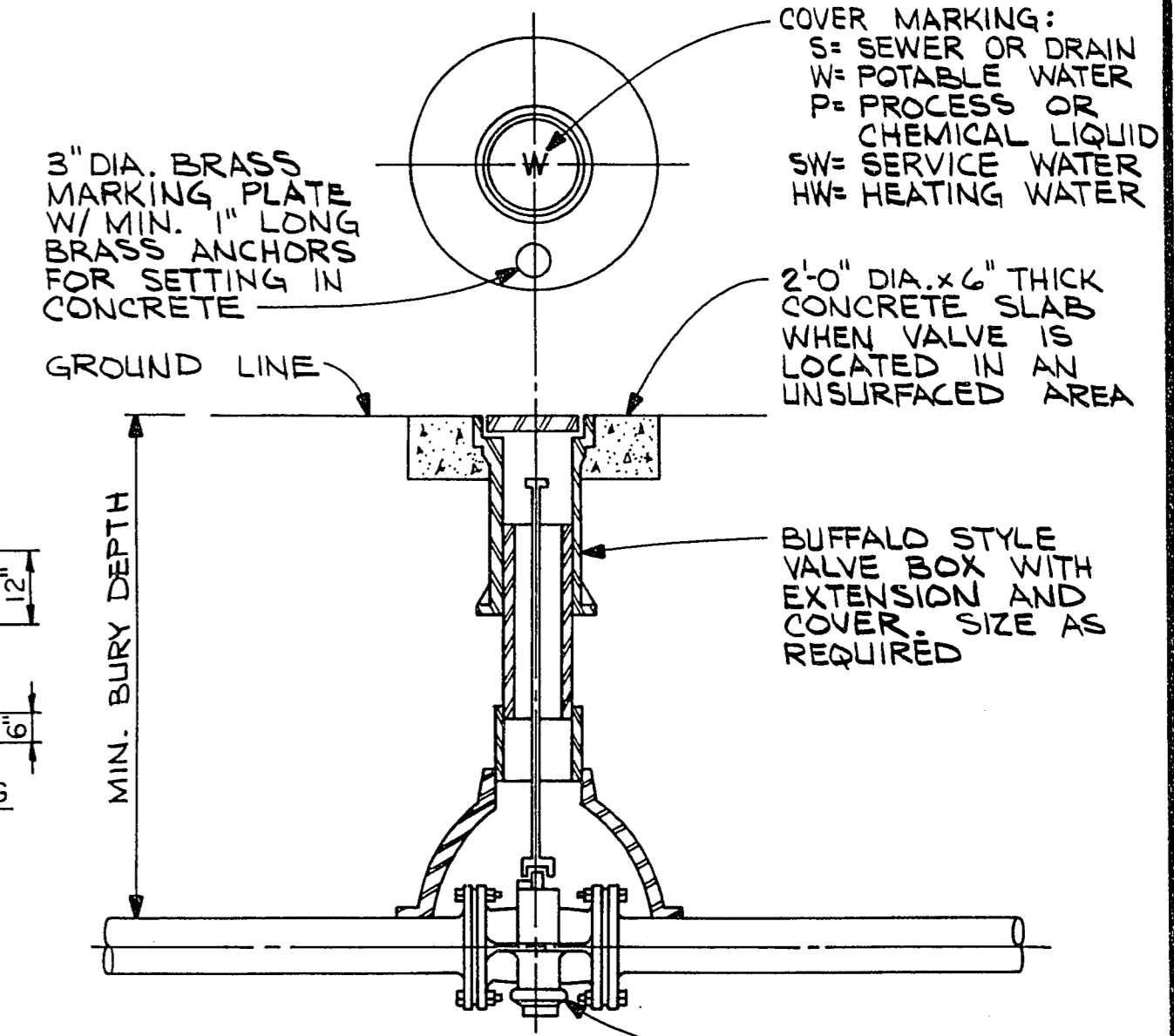


NOTE: DO NOT COVER ANY JOINT W/ CONCRETE. BLOCKS SHALL BE PLACED AGAINST UNDISTURBED EARTH.  
AREA OF BLOCK FACE SHALL BE FIGURED AS FOLLOWS WHERE:  
B = AREA OF BLOCK, FT.<sup>2</sup>  
A = AREA OF PIPE DIA., IN.<sup>2</sup>  
Δ = ANGLE OF DEFLECTION IN DEGREES.  
F.S. = FACTOR OF SAFETY 2.0 MIN.  
P = HYDROSTATIC TEST PRESSURE-psi  
R = REACTION FORCE IN POUNDS  
R = 2 AP SIN 1/2Δ  
B =  $\frac{R \times F.S.}{750}$

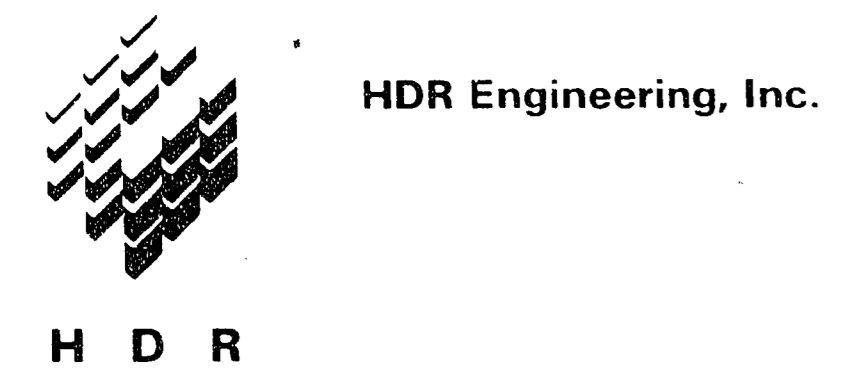
TYPICAL THRUST BLOCKING DETAIL FOR PIPE FITTINGS



PIPE EMBEDMENT

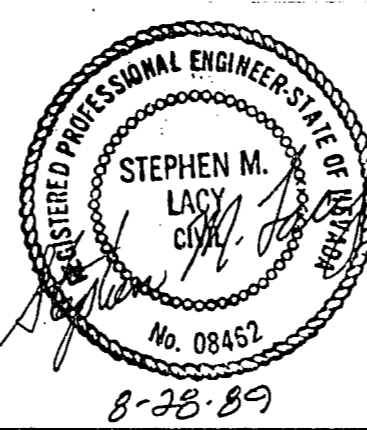


TYPICAL VALVE SETTING



1 CORRECTED ACCORDING TO CONSTRUCTION RECORDS

4-92 DJD DAK SML  
Date Drawn Chkd Resp Engr Proj Mgr



Project Manager: STEVE M. LACY 8-28-89  
Architect: M.J. SHANAHAN I/C Process: D.F. PENNER  
Civil: A.J. PETERSON Mechanical: G.A. NELSON  
Electrical: F.E. MAYCOCK Structural: R.E. KUMM

Sludge Dewatering Facilities

Las Vegas, Nevada

Scale	NONE	Project No.	00120-028-041	Drawing No.	P-6	Issue	1
-------	------	-------------	---------------	-------------	-----	-------	---

PROCESS DETAILS

53 of 69

5-1-79 3/11/18