

MONTHS FOLLOWING PROJECT START

1989

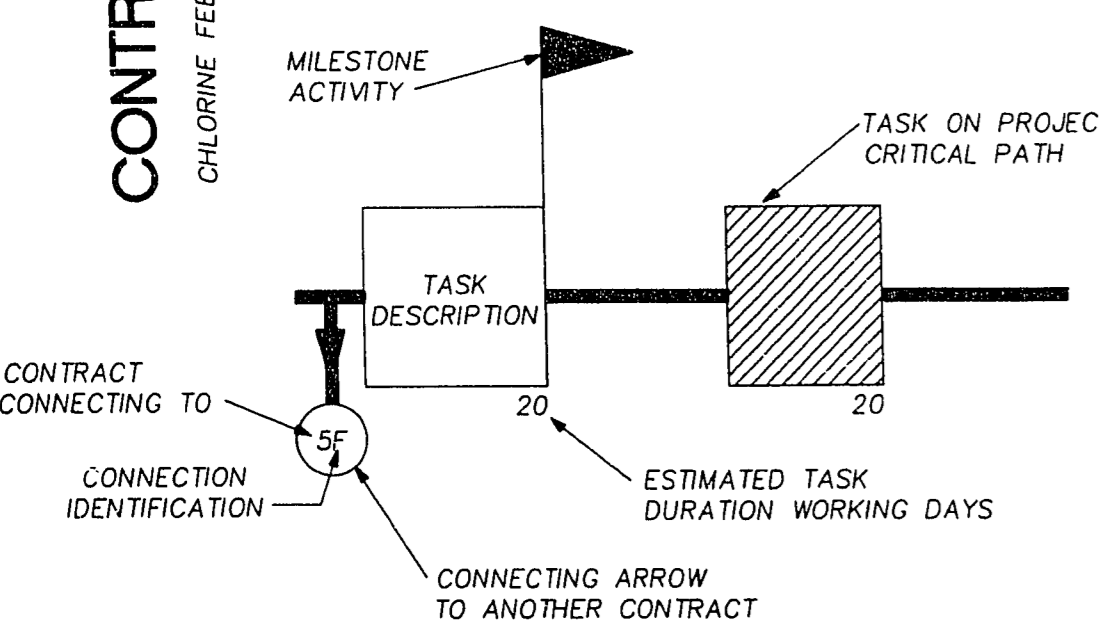
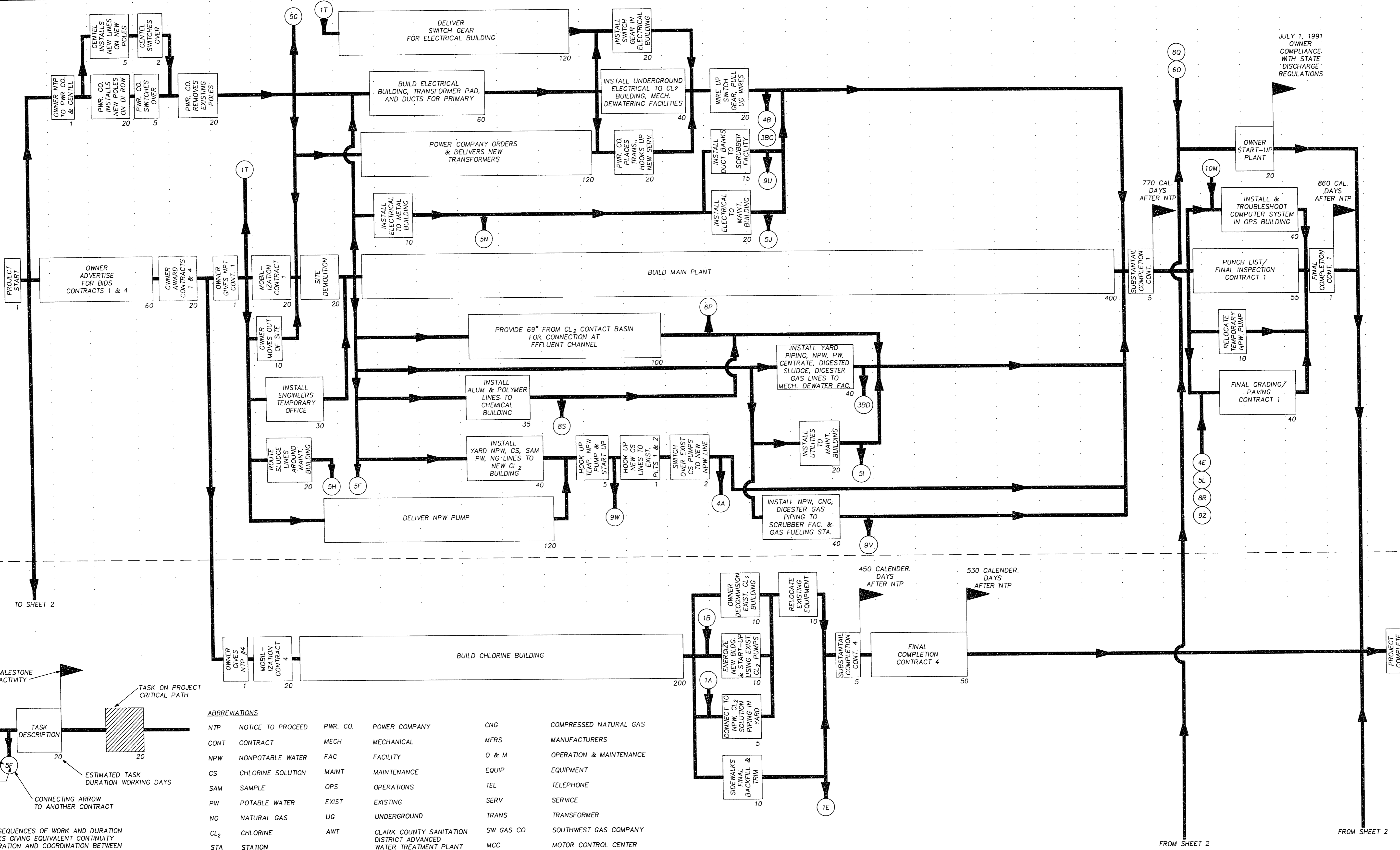
1990

1991

J 1 F 2 M 3 A 4 M 5 J 6 J 7 A 8 S 9 O 10 N 11 D 12 J 13 F 14 M 15 A 16 M 17 J 18 J 19 A 20 S 21 O 22 N 23 D 24 J 25 F 26 M 27 A 28 M 29 J 30 J 31 A 32 S 33 O 34

**CONTRACT 1**  
MAIN PLANT

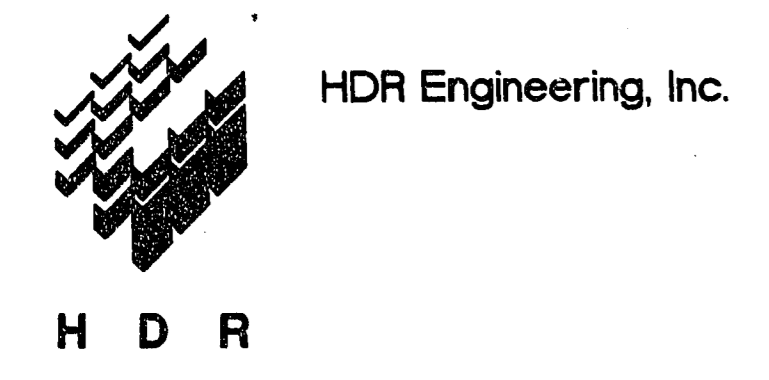
**CONTRACT 4**  
CHLORINE FEED FACILITIES



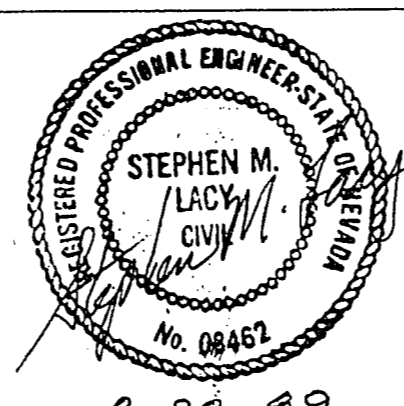
**ABBREVIATIONS**

NTP	NOTICE TO PROCEED	PWR. CO.	POWER COMPANY	CNG	COMPRESSED NATURAL GAS
CONT	CONTRACT	MECH	MECHANICAL	MFRS	MANUFACTURERS
NPW	NONPOTABLE WATER	FAC	FACILITY	O & M	OPERATION & MAINTENANCE
CS	CHLORINE SOLUTION	MAINT	MAINTENANCE	EQUIP	EQUIPMENT
SAM	SAMPLE	OPS	OPERATIONS	TEL	TELEPHONE
PW	POTABLE WATER	EXIST	EXISTING	SERV	SERVICE
NG	NATURAL GAS	UG	UNDERGROUND	TRANS	TRANSFORMER
CL <sub>2</sub>	CHLORINE	AWT	CLARK COUNTY SANITATION DISTRICT ADVANCED WATER TREATMENT PLANT	SW GAS CO	SOUTHWEST GAS COMPANY
STA	STATION			MCC	MOTOR CONTROL CENTER

NOTE: OTHER SEQUENCES OF WORK AND DURATION OF TASKS GIVING EQUIVALENT CONTINUITY OF OPERATION AND COORDINATION BETWEEN CONTRACTS WILL BE CONSIDERED.



1	CORRECTED ACCORDING TO CONSTRUCTION RECORDS	4-92			
A	CONTRACT BID DOCUMENTS	8-28	DJD	SML	SML
Issue No.	Description	Date	Drawn	Checked	Responsible Engr.



Project Manager	STEVE M. LACY	8-28-89
Architect	M.J. SHANAHAN	I&C/Process
	A.J. PETERSON	Mechanical
Electrical	F.E. MAYCOCK	Structural
		R.E. KUMM

**Sludge Dewatering Facilities**  
Las Vegas, Nevada  
1989

MASTER CPM SCHEDULE			
Scale	NONE	Project No.	00120-028-041
Drawing No.	C-1	Issue	1

69 of 69  
5-1-95 3/1/89