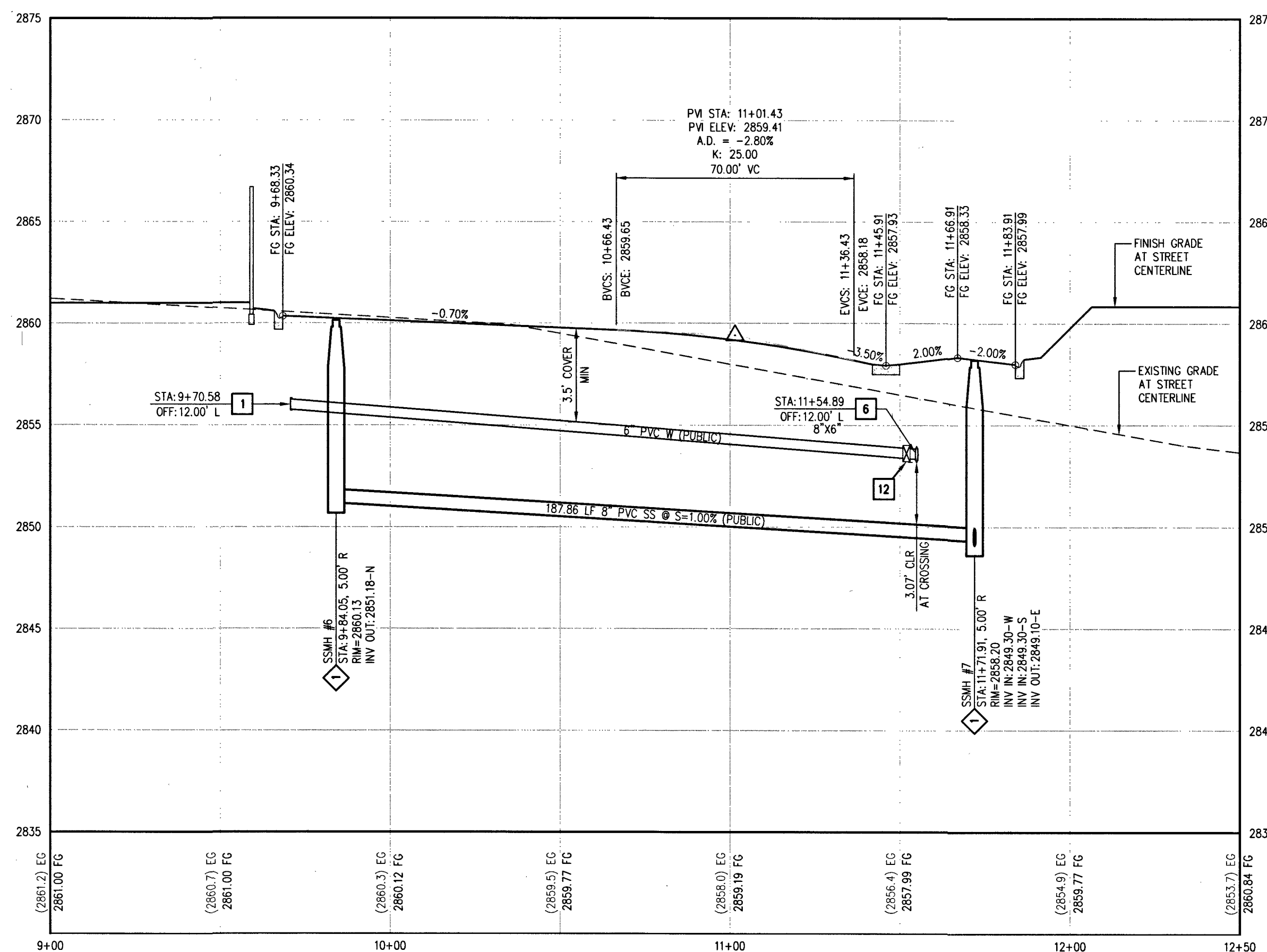


OLD SKYE CT - PLAN VIEW
(PRIVATE)



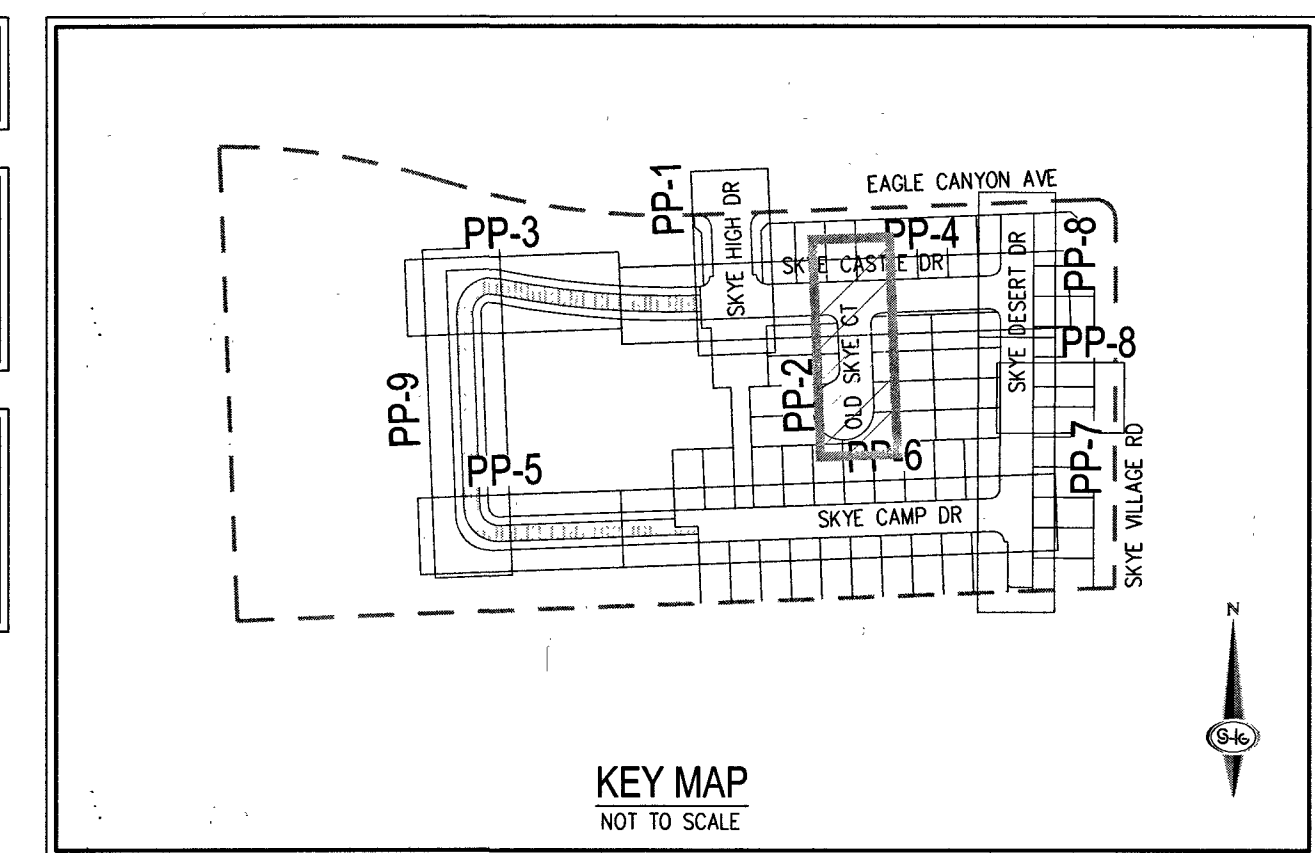
OLD SKYE CT - PROFILE VIEW

HORIZ: 1" = 30'
VERT: 1" = 5'

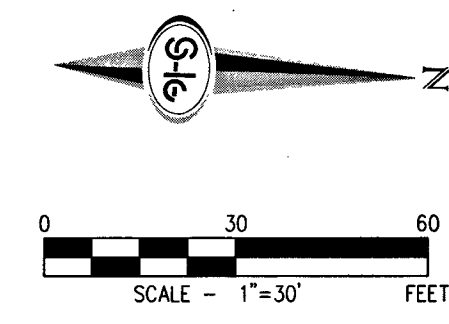
CALL SOUTHWEST GAS AT 702-651-2111 FOR STANDBY WHEN EXCAVATING OVER OR NEAR HIGH PRESSURE GAS LINES

SURVEY NOTE
OWNER RESPONSIBLE TO PROVIDE SURVEY MONUMENTATION AS SHOWN AND TO REPLACE ALL SURVEY MONUMENTATION DAMAGED, DISTURBED, DESTROYED, OR OBLISCURED DURING CONSTRUCTION.

LEGAL DESCRIPTION
BEING A PORTION OF ALL OF GOVERNMENT LOTS 1, 2, 3, 4, 5, 6, 7, 8, 9, 10, 11, 12, 13, 14, 15 AND 16 OF SECTION 12, TOWNSHIP 19 SOUTH, RANGE 59 EAST, M.D.M., CITY OF LAS VEGAS, CLARK COUNTY, NEVADA.



KEY MAP
NOT TO SCALE



RAMP TRANSITION LENGTHS FOR 1:12 SIDE SLOPES

CASE NO.	GRADE %	"A" MIN.	"B" MIN.
1	-6 TO -5.01	4.5'	21.5'
2	-5 TO -4.01	4.5'	15.0'
3	-4 TO -3.01	4.5'	12.0'
4	-3 TO -2.01	4.5'	9.5'
5	-2 TO 2	8.0'	8.0'
6	2.01 TO 3	9.5'	4.5'
7	3.01 TO 4	12.0'	4.5'
8	4.01 TO 5	15.0'	4.5'
9	5.01 TO 6	21.5'	4.5'

SIDEWALK RAMPS USING ARMOR TILE TRUNCATED DOMES OR EQUIVALENT PER CCAUSD NO. 235, CASE 1

CURVE TABLE

CURVE	LENGTH	RADIUS	DELTA	TANGENT
C1	31.42'	20.00'	90°00'00"	20.00'
C2	31.42'	20.00'	90°00'00"	20.00'
C3	31.44'	20.00'	90°03'38"	20.02'
C4	31.39'	20.00'	89°56'22"	19.98'
C5	29.33'	23.50'	71°30'50"	16.92'
C6	166.81'	38.00'	251°30'50"	52.77'
C7	32.25'	20.00'	92°22'40"	20.85'
C8	30.59'	20.00'	87°37'20"	19.19'
C9	7.85'	5.00'	90°00'00"	5.00'
C10	7.85'	5.00'	90°00'00"	5.00'
C11	30.61'	20.00'	87°40'58"	19.21'
C12	32.22'	20.00'	92°19'02"	20.83'
C13	7.85'	5.00'	90°00'00"	5.00'
C14	7.85'	5.00'	90°00'00"	5.00'

- WATER NOTES**
- INSTALL 6" CAP WITH BLOWOFF PER UDACS PLATE NO. 36
 - INSTALL 8" 11.25' BEND PER UDACS PLATE NO. 31
 - INSTALL 8" 45' VERTICAL BEND PER UDACS PLATE NO. 31 (MECHANICALLY RESTRAINED WHERE SHOWN IN PROFILE)
 - INSTALL 8" 5' BEND PER UDACS PLATE NO. 31 (MECHANICALLY RESTRAINED)
 - INSTALL 8" CAP WITH BLOWOFF PER UDACS PLATE NO. 36
 - INSTALL 8" x 6" TEE PER UDACS PLATE NO. 31
 - INSTALL 8" x 8" TEE PER UDACS PLATE NO. 31
 - INSTALL 6" PVC WATER PIPE PER UDACS PLATE NO. 17
 - INSTALL 8" PVC WATER PIPE PER UDACS PLATE NO. 17
 - INSTALL 8" x 6" TEE PER UDACS PLATE NO. 31 AND FIRE HYDRANT ASSEMBLY WITH 6" GATE VALVE PER UDACS PLATE NO. 40
 - INSTALL 8" GATE VALVE WITH VALVE BOX PER UDACS PLATE NO. 30 & 39
 - INSTALL 6" GATE VALVE WITH VALVE BOX PER UDACS PLATE NO. 30 & 39
 - INSTALL 1" COPPER SERVICE W/ 3/4" METER PER UDACS PLATE NO. 1
 - INSTALL 1" COPPER SERVICE W/ 3/4" IRRIGATION METER AND 1" RPPA PER UDACS PLATE NO. 4, 8, AND "RPPA WITH CURB STOP" DETAIL ON SHEET U-1 REMOVE CAP & BLOW-OFF ASSEMBLY PER UDACS PLATE NO. 36 & CONNECT TO 8" WATER PIPE BY OTHERS
 - CONNECT TO 8" WATER PIPE BY OTHERS
 - INSTALL 8" DIP WATER PIPE
 - INSTALL 8" GATE VALVE WITH VALVE BOX PER UDACS PLATE NO. 30 & 39 (MECHANICALLY RESTRAINED)
 - INSTALL 10" PVC WATER PIPE PER UDACS PLATE NO. 17
 - INSTALL 10" x 8" REDUCER PER UDACS PLATE NO. 30
 - INSTALL 10" 5' BEND PER UDACS PLATE NO. 31 (MECHANICALLY RESTRAINED)

- SEWER NOTES**
- INSTALL 48" SSMH PER DCSWS SD-1A THRU SD-4 AND SD-9 WITH 24" SINGLE END
 - INSTALL 8" CAP WITH THRUST BLOCK PER DCSWS SECTION 2.2.5
 - INSTALL 8" PVC SS PER DCSWS SD-15 AND SD-17
 - INSTALL 8" C-900 SS PER DCSWS SD-1A THRU SD-4 AND SD-9
 - MANHOLE SHALL BE CORROSION PROTECTED WITH AGENCY APPROVED FACTORY INSTALL PVC LINER OR FIELD APPLIED COATING PER DCSWS SECTION 3.16.8 (A AND B)
 - INSTALL 4" SEWER LATERAL (PRIVATE) PER SD-22, SD-23, & SD-25 W/8" x 4" WYE (TYPICAL) (C-900 WHERE SHOWN ON PLANS)
 - REMOVE CAP AND CONNECT TO EXISTING 8" SS (BY OTHERS)

SEWER CONNECTION NOTE
ONE OR MORE SEGMENTS OF THE DOWNSIDE SEWER SYSTEM THAT WILL SERVE THIS PROJECT HAS NOT BEEN COMPLETED AND/OR ACCEPTED FOR MAINTENANCE BY THE CITY OF LAS VEGAS. WORK DONE ON THIS PROJECT PRIOR TO THE COMPLETION AND/OR ACCEPTANCE OF THE DOWNSIDE SEWER SYSTEM(S) SHALL BE DONE AT THE DEVELOPER'S OWN RISK. THE CITY OF LAS VEGAS RESERVES THE RIGHT TO PREPARE THE PHYSICAL CONNECTION OF THIS PROJECT INTO THE DOWNSIDE SEWER SYSTEM UNTIL ALL SEGMENTS HAVE BEEN COMPLETED AND ACCEPTED FOR MAINTENANCE, OR UNTIL SUCH TIME AS THEY ARE DEEMED AVAILABLE FOR SERVICE.

DISCLAIMER NOTE
1) EXISTING UTILITY LOCATIONS SHOWN HEREON ARE APPROXIMATE ONLY. IT SHALL BE THE CONTRACTOR'S RESPONSIBILITY TO DETERMINE THE EXACT VERTICAL AND HORIZONTAL LOCATION OF ALL EXISTING UNDERGROUND UTILITIES PRIOR TO COMMENCING CONSTRUCTION. NO REPRESENTATION IS MADE THAT ALL EXISTING UTILITIES ARE SHOWN HEREON. THE ENGINEER ASSUMES NO RESPONSIBILITY FOR UTILITIES NOT SHOWN IN THEIR PROPER LOCATION.
2) FOR ROADWAY WIDENING AND HALF STREET IMPROVEMENTS THE CONTRACTOR SHALL VERIFY CROSS SLOPES FROM EXISTING PAVEMENT SAWCUT LINE TO PROPOSED EDGE OF PAVEMENT OR PROJECTED LIP OF CURB PRIOR TO SUBGRADE PREPARATION AND CONSTRUCTION OF PROPOSED CURB LINE. IF MINIMUM OR MAXIMUM CROSS SLOPES DO NOT MEET AGENCY STANDARDS THE CONTRACTOR SHALL NOTIFY THE ENGINEER.

- GRADING NOTES**
- CONSTRUCT 30" ROLL CURB AND GUTTER PER CCAUSD NO. 217.51. CURB FLOW LINES LESS THAN 6" FROM GRADE SHALL BE WATER TESTED. ANY CURB THAT DOES NOT FLOW SHALL BE REMOVED AND REPLACED AT NO COST TO THE CITY
 - INSTALL "L" TYPE CURB AND GUTTER PER CCAUSD #216
 - INSTALL 5" WIDE CONCRETE SIDEWALK (5" THICK OVER 6" TYPE II AGGREGATE BASE) PER CCAUSD #234
 - INSTALL 8'-FT CROSS GUTTER PER DETAIL 29 ON SHEET D-3
 - INSTALL 2" ASPHALT PAVEMENT OVER 4" TYPE II AGGREGATE BASE
 - CONSTRUCT SIDEWALK RAMPS USING ARMOR TILE TRUNCATED DOMES OR EQUIVALENT CCAUSD NO. 235, CASE 1 & 235.1
 - CONSTRUCT 10' TRANSITION FROM "L" CURB TO ROLL CURB PER DETAIL 30 ON SHEET D-3
 - INSTALL CONCRETE FLUME PER DETAIL 33 ON SHEET D-3
 - INSTALL SIDEWALK DRAIN PER CCAUSD #236
 - PERIMETER LANDSCAPE TO BE CONSTRUCTED BY MASTER DEVELOPER
 - INSTALL WROUGHT IRON FENCE WITH PEDESTRIAN ACCESS PER DETAILS ON SHEET D-3
 - INSTALL "A" TYPE ISLAND CURB PER CCAUSD NO. 219
 - INSTALL 24" WIDE GATE PER CCAUSD DWG NO. 425.51
 - CONNECT TO EXISTING 36" RCP SD
 - INSTALL 2" WIDE CURB OPENING PER DETAIL 32 ON SHEET D-3
 - INSTALL PEDESTRIAN GATE PER DETAIL 28 ON SHEET D-3 OR APPROVED EQUAL
 - INSTALL 18" CLASS III RCP STORM DRAIN
 - INSTALL 24" CLASS III RCP STORM DRAIN
 - INSTALL 15 LF TYPE "CM2" DROP INLET PER CCAUSD #412.1 AND #421
 - INSTALL 17.5 LF TYPE "CM2" DROP INLET PER CCAUSD #412.1 AND #421
 - INSTALL 48" TYPE I SSMH PER CCAUSD #403
 - INSTALL 60" TYPE III SSMH PER CCAUSD #406
 - INSTALL 30" CLASS III RCP STORM DRAIN
 - INSTALL PAVERS SECTION PER LANDSCAPE PLAN BY OTHERS AND APPROVED GEOTECH REPORT. SEE SHEET D-4 FOR CONCRETE PAVERS DETAIL
 - INSTALL PEDESTRIAN ACCESS STAIRS PER ARCHITECTURAL PLANS BY OTHERS

OWNER/DEVELOPER
GREYSTONE NEVADA LLC
2490 PASEO VERDE PARKWAY #120
PH: (702) 458-7700
FX: (702)
CONTACT: ROBERT JOHNSON

ENGINEER
SLATER HANIFAN GROUP, INC.
5740 S. ARVILLE STREET, SUITE 216
LAS VEGAS, NV 89118
PH: (702) 284-5300
FX: (702) 284-5359
CONTACT: JERRY SLATER

BENCHMARK
USDA BRASS CAP ON AN IRON PIPE, 140' SOUTHWEST OF TELEPHONE POLE #269941, SOUTHWEST CORNER OF THE U.S. 95/VALLEY CANYON TURNOFF.
ELEVATION = 2817.62 FEET, 858.813 METERS
N.A.V.D. 88
PER THE CLARK COUNTY VERTICAL CONTROL LAST REVISED 2003

BASIS OF BEARINGS
SOUTH 0°08'59" WEST, BEING THE BEARING OF THE EAST LINE OF THE SOUTHEAST QUARTER (SE 1/4) OF SECTION 12, TOWNSHIP 19 SOUTH, RANGE 59 EAST, M.D.M., CITY OF LAS VEGAS, CLARK COUNTY, NEVADA, AS SHOWN BY MAP THEREOF IN BOOK 147, PAGE 71 OF PLATS IN THE CLARK COUNTY RECORDER'S OFFICE, NEVADA.

PUBLIC UTILITY EASEMENT NOTE
ALL PRIVATE STREETS ARE P.U.E. PUBLIC UTILITY EASEMENTS AND PUBLIC DRAINAGE EASEMENTS TO BE PRIVATELY MAINTAINED BY HOA.

APPROVED FOR CONSTRUCTION
JERRY SLATER
LAS VEGAS VALLEY WATER DISTRICT ENGINEERING SERVICES
PROJECT No. 125894 FIRST APPROVED DATE: 12/21/17



SLATER HANIFAN GROUP
CONSULTING ENGINEERS & PLANNERS
5740 S. ARVILLE STREET #216, LAS VEGAS, NV 89118
PHONE (702) 284-5300
FAX (702) 284-5359

GREYSTONE NEVADA, LLC
SKYE CANYON II PARCEL 2.29 PHASE 1
PLAN AND PROFILE - II

CITY OF LAS VEGAS, NV

DATE: 12/20/17
DRAFTER: DNP
DESIGNER: BCC/DNP
CHECKED: STS
PROJECT NO. OLY1710-000
SHEET 15 OF 33
HANSEN NO. 00858
DWG NO. 107Y5064-1

PROJ.#: 125894 AGR:116572 QS:126-12-SE XC 11361

PP-2