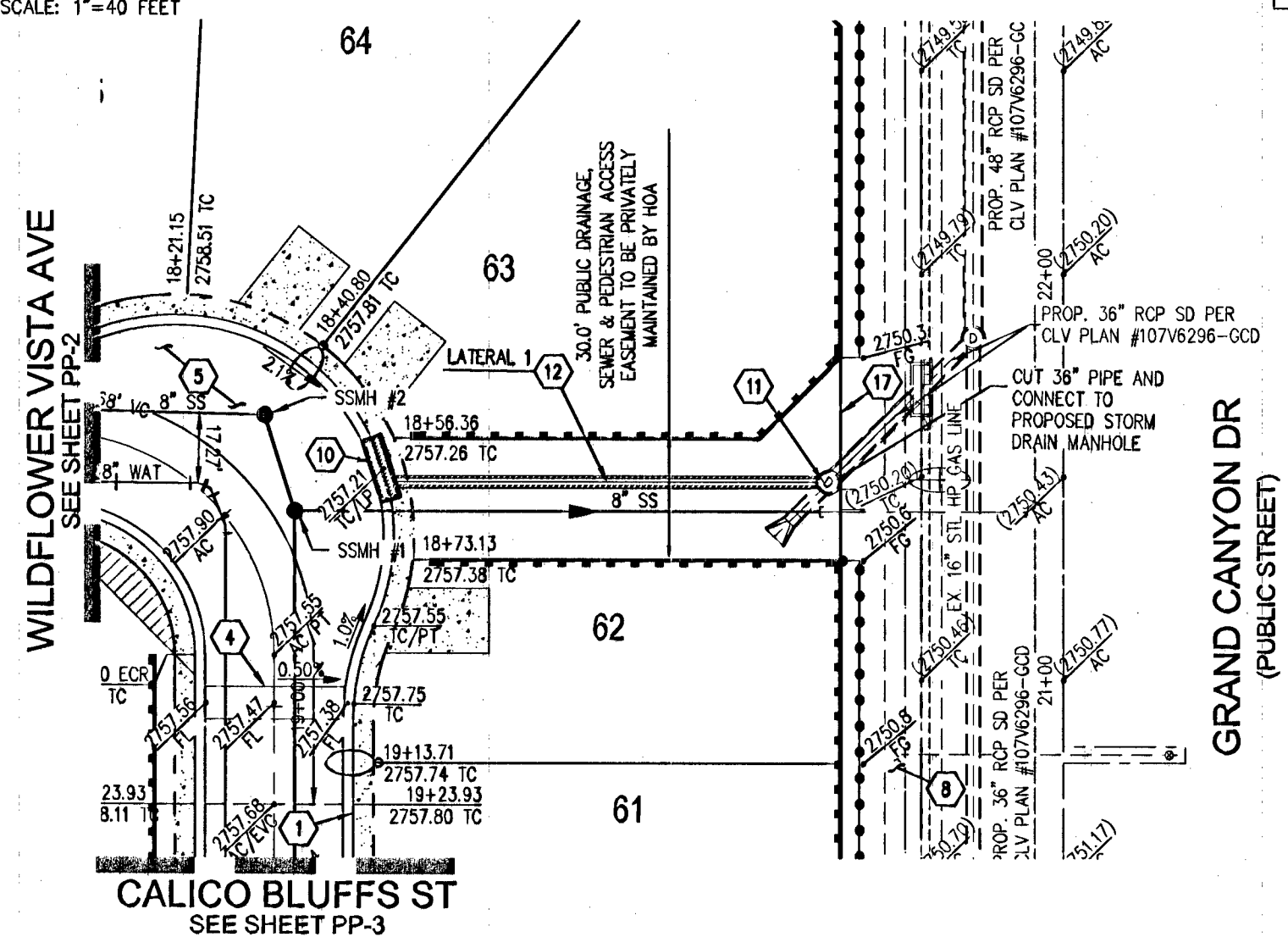
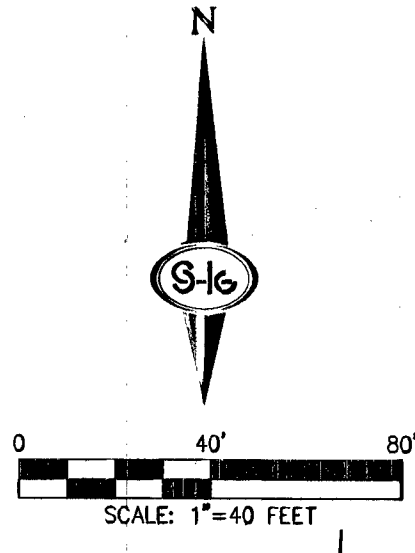
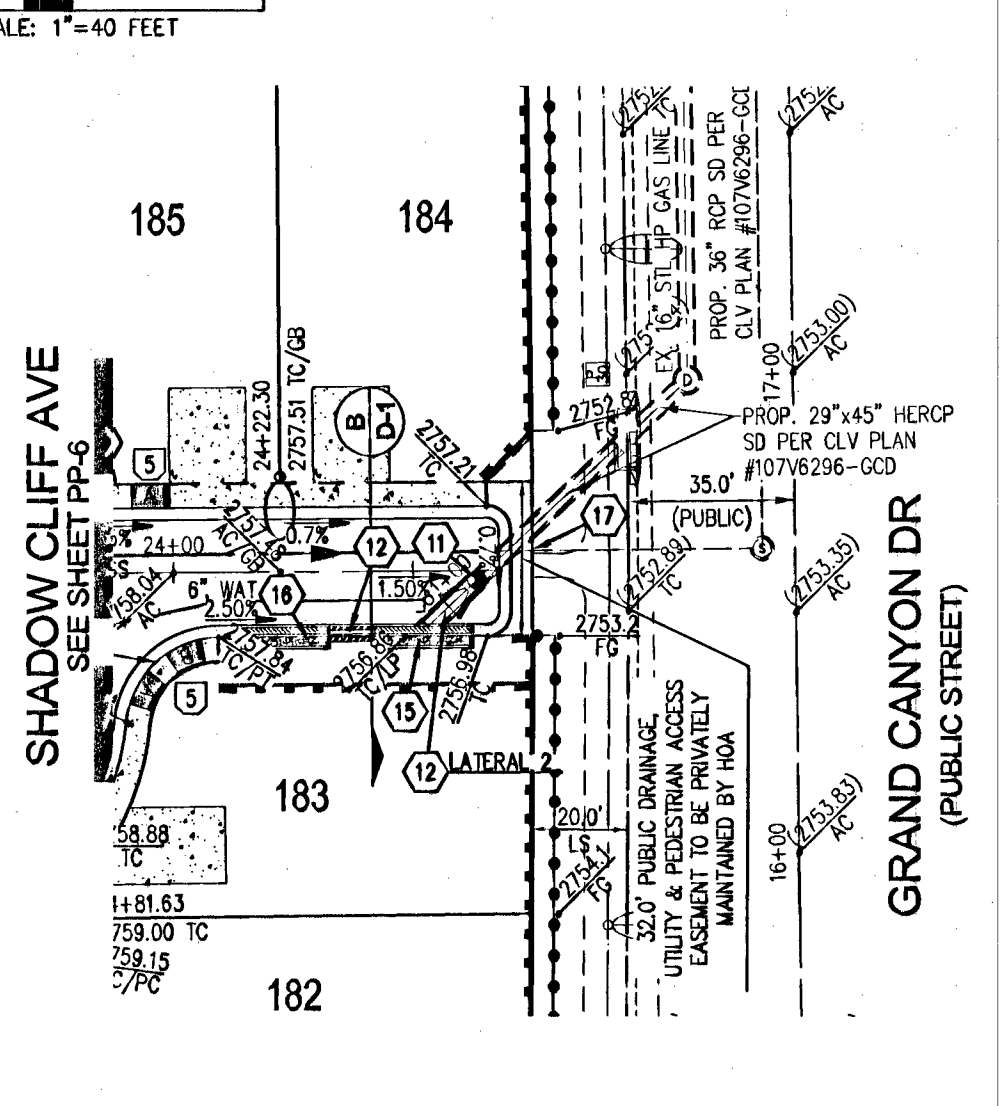
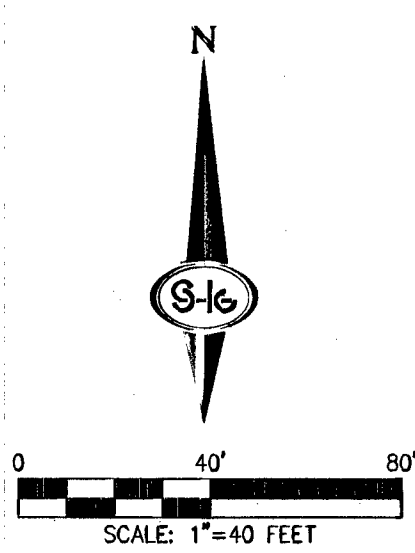


SKYE FALLS ST  
(PRIVATE STREET)

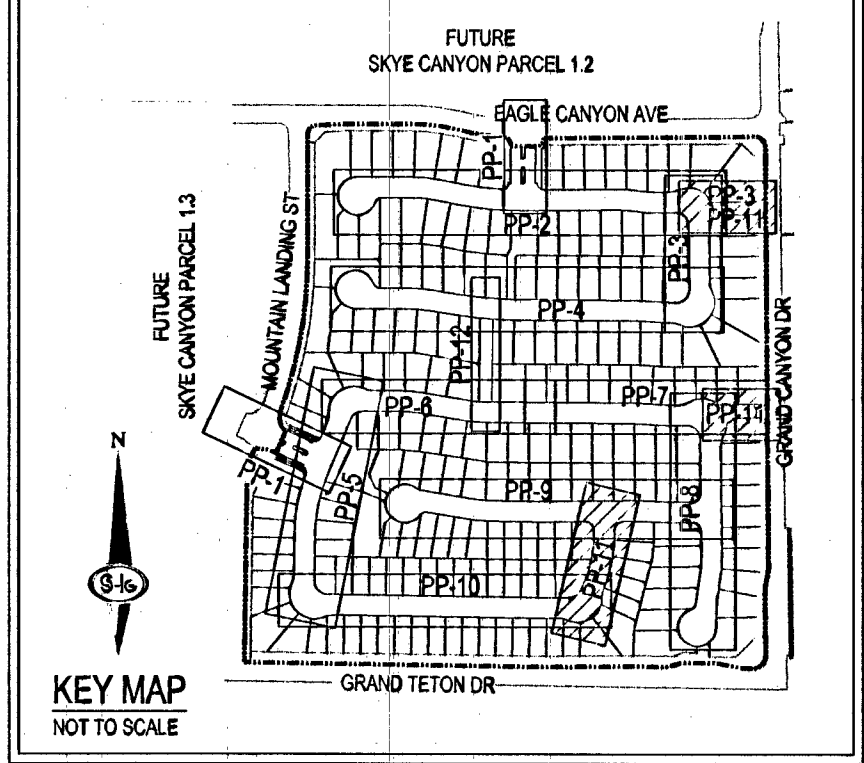


STORM DRAIN LATERAL NO. 1 PLAN VIEW  
(NORTH)



STORM DRAIN LATERAL NO. 2 PLAN VIEW  
(SOUTH)

CAUTION: HIGH-PRESSURE GAS  
CALL SOUTHWEST GAS AT 702-651-2111 FOR  
STANDBY WHEN EXCAVATING OVER OR NEAR  
HIGH PRESSURE GAS LINES.



- ### GRADING NOTES
- INSTALL 30" ROLL CURB PER CCAUSD NO. 217.51 OVER 6" TYPE II AGGREGATE BASE.
  - INSTALL 1" TYPE CURB AND GUTTER PER CCAUSD #216
  - INSTALL 5" WIDE CONCRETE SIDEWALK (5" THICK OVER 6" TYPE 2 AGGREGATE BASE) PER CCAUSD #234
  - INSTALL 8-FIT CROSS GUTTER PER DETAIL ON SHEET D-2
  - INSTALL 2" ASPHALT PAVEMENT OVER 4" TYPE II AGGREGATE BASE
  - CONSTRUCT SIDEWALK RAMP USING ANJOR TILE TRUNCATED DOMES FOR EQUIVALENT CCAUSD NO. 235, CASE 1 & 235.1
  - CONSTRUCT 10' TRANSITION FROM 1" CURB TO WOOD ROLL CURB PER DETAIL ON SHEET D-3
  - PERIMETER LANDSCAPE TO BE CONSTRUCTED BY MASTER DEVELOPER
  - CONSTRUCT 12" WIDE COMMERCIAL DRIVEWAY PER CCAUSD #108
  - INSTALL 15" TYPE "CM2" DROP INLET PER CCAUSD #412.1 AND #421
  - INSTALL 60" TYPE III STORM DRAIN MANHOLE PER CCAUSD #408
  - SEE SHEET P-11 FOR STORM DRAIN PLAN AND PROFILE
  - INSTALL WROUGHT IRON FENCE WITH PEDESTRIAN ACCESS
  - INSTALL SIDEWALK DRAIN PER CCAUSD #236
  - INSTALL 20" TYPE "CM2" DROP INLET PER CCAUSD #412.1 AND #421
  - INSTALL 17.5" TYPE "CM2" DROP INLET PER CCAUSD #412.1 AND #421
  - INSTALL WROUGHT IRON FENCE AND GATE PER DETAIL ON SHEET D-2
- SEE SHEET C-2 FOR ABBREVIATIONS AND QUANTITIES

### LEGAL DESCRIPTION

BEING A PORTION OF THE NORTHWEST QUARTER (NW 1/4) OF THE SOUTHWEST QUARTER (SW 1/4) OF SECTION 7, TOWNSHIP 19 SOUTH, RANGE 60 EAST N.D.M., CLARK COUNTY, NEVADA.

### BASIS OF BEARING

NORTH 89°11'30" WEST, BEING THE BEARING OF THE SOUTH LINE OF THE SOUTHWEST QUARTER (SW 1/4) OF SECTION 7, TOWNSHIP 19 SOUTH, RANGE 60 EAST, N.D.M., AS PER FILE PAGE 14 OF SURVEYS, ON FILE IN THE COUNTY RECORDER'S OFFICE.

### BENCHMARK

USDA BRASS CAP ON AN IRON PIPE 140' SOUTHWEST OF TELEPHONE POLE #28947, SOUTHWEST CORNER OF THE U.S. 95/KYLE CANYON TURNOFF.

ELEVATION = 2817.82 FEET, 858.813 METERS  
N.A.V.D. 88 DATUM  
FROM THE CLARK COUNTY VERTICAL CONTROL LAST REISED 2003

- ### GENERAL NOTES
- SEE PLAN AND PROFILE SHEETS FOR CENTERLINE AND BACK OF CURB CURVE DATA.
  - FINAL GRADES ADJACENT TO STRUCTURES SHALL BE IN CONFORMANCE WITH IBC 2012, SECTION 2304.11.2.2.
  - THE CONTRACTOR SHALL VERIFY ALL CONDITIONS AND DIMENSIONS AND REPORT ALL DISCREPANCIES TO THE ENGINEER.
  - ALL IMPROVEMENTS TO BE PROTECTED FROM EROSION BY SWPPP.
  - MAXIMUM/MINIMUM SLOPES AND MINIMUM STREET SECTIONS NOT TO EXCEED THAT SHOWN ON GEOTECH REPORT.
  - SEE DETAIL SHEETS FOR STREET SECTIONS AND DETAILS.
  - ALL PUBLIC AND PRIVATE DRAINAGE IMPROVEMENTS TO BE BONDED FOR AND INSPECTED.
  - CONSTRUCTION OF BLOCK WALLS REQUIRES A SEPARATE BUILDING PERMIT AND APPROVAL.
  - EXISTING UTILITY LOCATIONS SHOWN HEREON ARE APPROXIMATE ONLY. CONTRACTOR TO VERIFY LOCATION AND ELEVATION OF EXISTING UTILITY STRUCTURES AND FACILITIES AND NOTIFY ENGINEER/OWNER SHALL BE NOTIFIED OF PRIOR DAMAGE TO EXISTING FACILITIES PRIOR TO CONSTRUCTION. CONTRACTOR WILL BE RESPONSIBLE FOR REPAIR/REPLACING FACILITIES IF ENGINEER/OWNER IS NOT NOTICED OF EXISTING DAMAGE PRIOR TO CONSTRUCTION.
  - NO STRUCTURE, VEGETATION, OR OBJECTS OF ANY KIND IS PERMITTED OVER TWENTY-FOUR (24) INCHES IN HEIGHT (MEASURED FROM THE TOP OF THE ADJACENT CURB IF CURB EXISTS) WITHIN THE SIGHT VISIBILITY ZONES.
  - CONSTRUCTION OF BLOCK WALLS REQUIRES A SEPARATE BUILDING PERMIT AND APPROVAL BY THE BUILDING DEPARTMENT.

- ### SEWER NOTES
- INSTALL 48" DIAMETER SANITARY SEWER MANHOLE WITH PRECAST BASE PER DCSMS SD-1A, SD-1B
  - MANHOLE SHALL BE CORROSION PROTECTED WITH AGENCY APPROVED FACTORY INSTALLED PVC LINER OR FIELD APPLIED COATING PER DCSMS SECTION 3.16.8 (A AND B)

### SEWER CONNECTION NOTE

ONE OR MORE SEGMENTS OF THE DOWNSIDE SEWER SYSTEM THAT WILL SERVE THIS PROJECT HAS NOT BEEN COMPLETED AND/OR ACCEPTED FOR MAINTENANCE BY THE CITY OF LAS VEGAS. ANY WORK DONE ON THIS PROJECT PRIOR TO THE COMPLETION AND/OR ACCEPTANCE OF THE DOWNSIDE SEWER SYSTEM SHALL BE DONE AT THE DEVELOPER'S OWN RISK. THE CITY OF LAS VEGAS RESERVES THE RIGHT TO PREVENT THE PHYSICAL CONNECTION OF THIS PROJECT INTO THE DOWNSIDE SEWER SYSTEM UNTIL ALL SEGMENTS HAVE BEEN COMPLETED AND ACCEPTED FOR MAINTENANCE. SUCH SUCH TIME AS THEY ARE DEEMED AVAILABLE FOR SERVICE.

- ### DROP INLET NOTES
- WHERE 10 FEET PARALLEL SEPARATION IS NOT PRACTICABLE:
- CAST-IN-PLACE MONOLITHIC POUR WITH WATERSTOP BETWEEN SLAB AND WALLS.
  - BASE WALLS AND TOP TO BE CONSTRUCTED WITH WATERSTOPS, CENTER BULB, OR FLAT STRIP (VINYLEX, GREENSTREAK PLASTIC PRODUCTS, OR APPROVED EQUAL).

### CURVE DATA TABLE

SEE SHEET P-1 THRU P-12 OF THIS PLAN SET

### WATER NOTES

MINIMUM 24" COVER PER UDACS SEC. 2.08.04 GRADING MUST BE COMPLETED PRIOR TO WATERLINE INSTALLATION

### RAMP TRANSITION LENGTHS FOR 1:12 SIDE SLOPES

CASE NO.	GRADE X "B" TO "A"	"A" MIN.	"B" MIN.
1	-8 TO -5.01	4.5'	21.5'
2	-5 TO -4.01	4.5'	15.0'
3	-4 TO -3.01	4.5'	12.0'
4	-3 TO -2.01	4.5'	9.5'
5	-2 TO 2	8.0'	8.0'
6	2.01 TO 3	9.5'	4.5'
7	3.01 TO 4	12.0'	4.5'
8	4.01 TO 5	15.0'	4.5'
9	5.01 TO 6	21.5'	4.5'

SIDEWALK RAMP USING ANJOR TILE TRUNCATED DOMES OR EQUIVALENT PER CCAUSD NO. 235, CASE 1

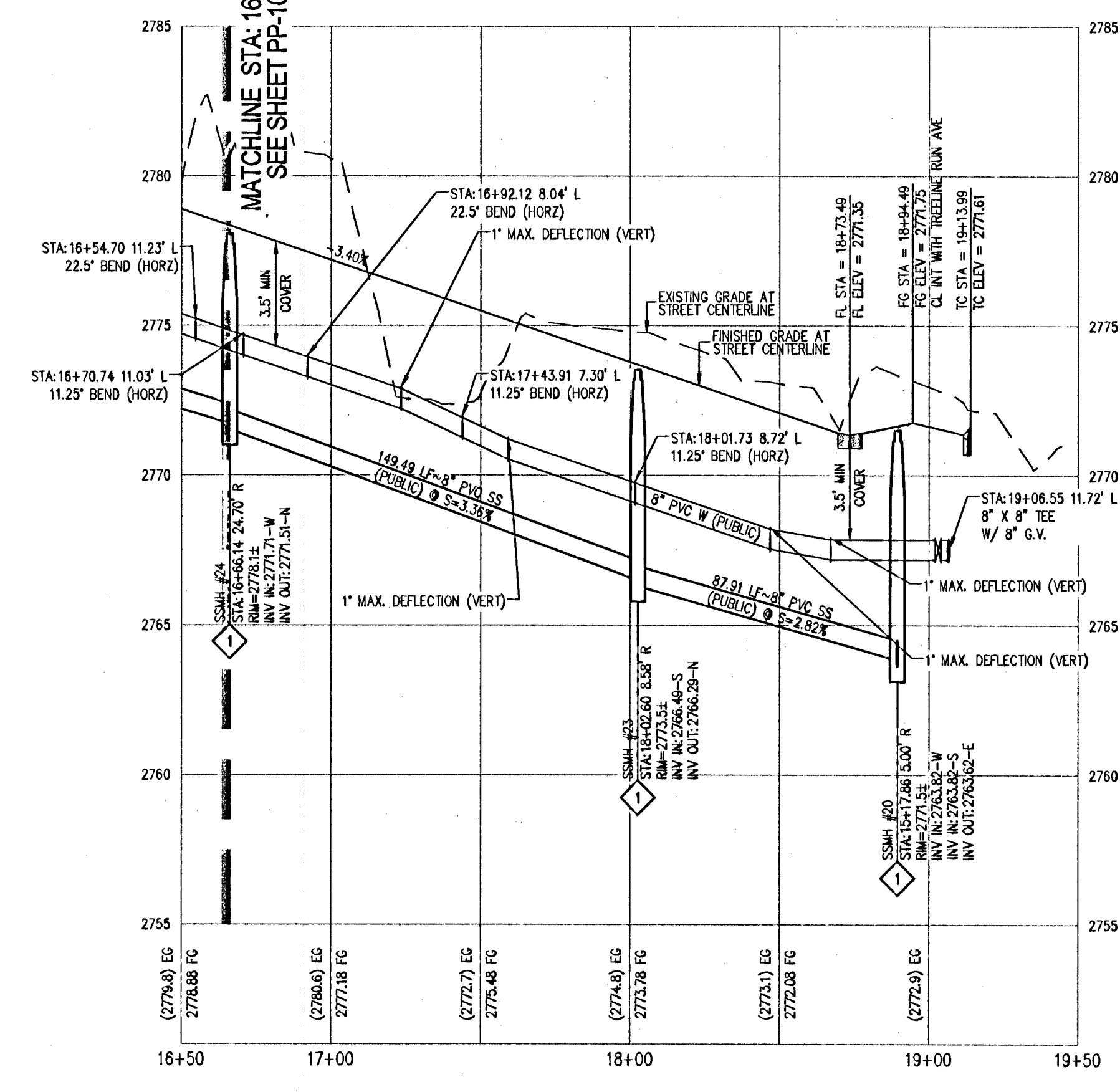
APPROVED FOR CONSTRUCTION

*[Signature]*

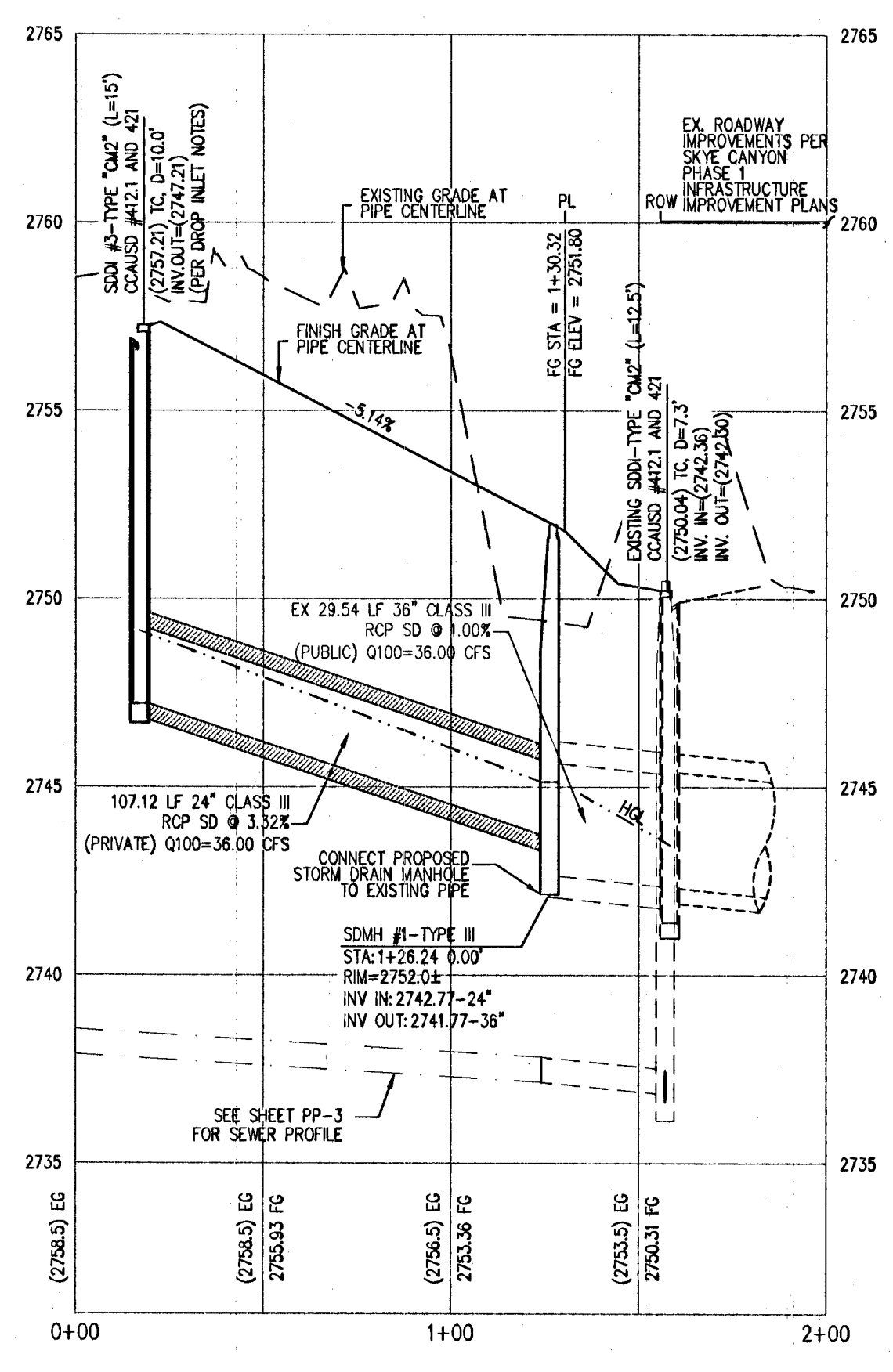
LAS VEGAS VALLEY WATER DISTRICT ENGINEERING  
SERVICES MANAGER  
DATE: 4/29/15 PROJECT No. 123068

### DISCLAIMER NOTE

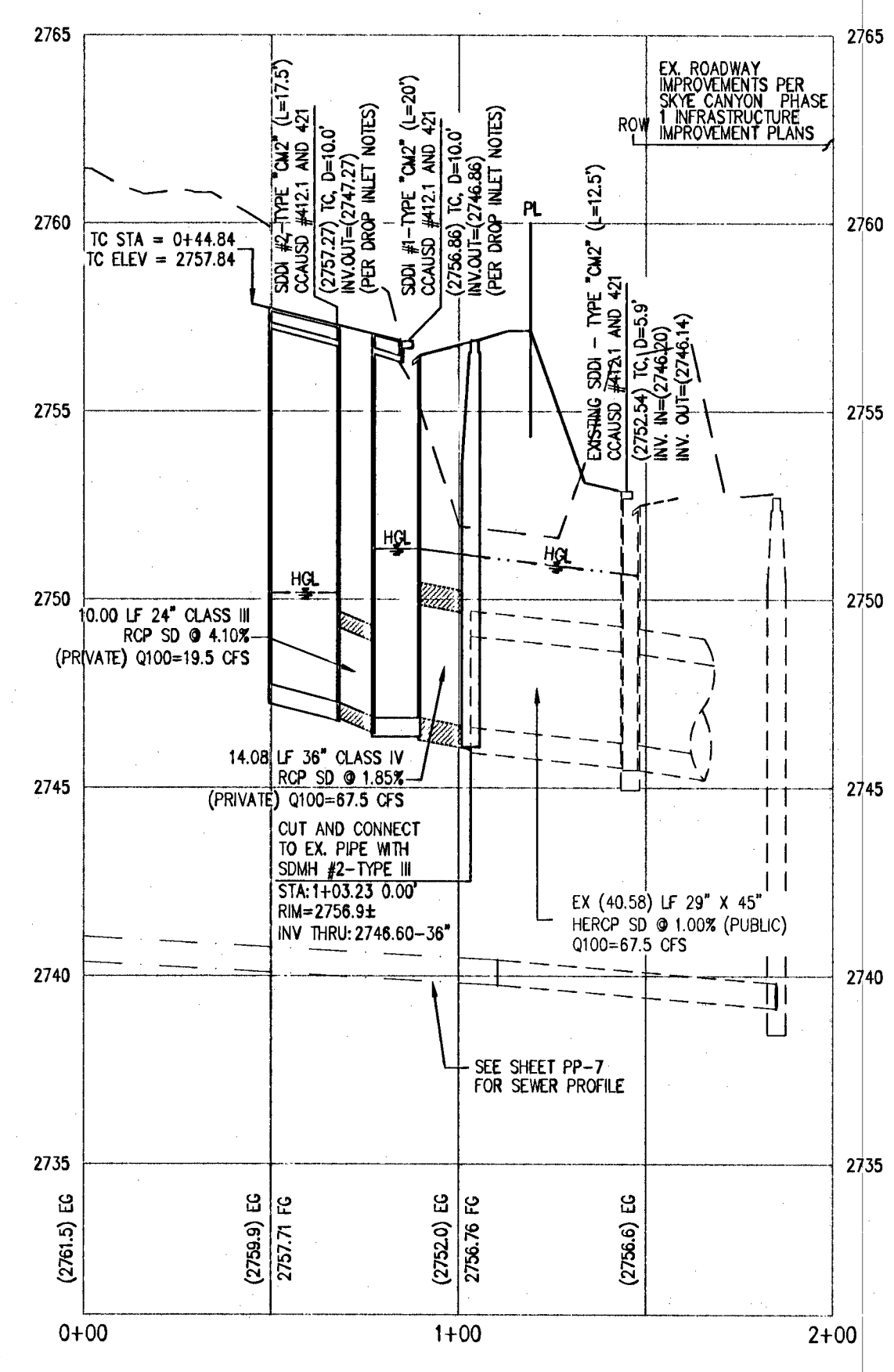
EXISTING UTILITY LOCATIONS SHOWN HEREON ARE APPROXIMATE ONLY. IT SHALL BE THE CONTRACTOR'S RESPONSIBILITY TO DETERMINE THE EXCEPT VERTICAL AND HORIZONTAL LOCATION OF ALL EXISTING UNDERGROUND UTILITIES PRIOR TO COMMENCING CONSTRUCTION. NO REPRESENTATION IS MADE THAT ALL EXISTING UTILITIES ARE SHOWN HEREON. THE ENGINEER ASSUMES NO RESPONSIBILITY FOR UTILITIES NOT SHOWN IN THEIR PROPER LOCATION.



PROFILE  
HOR. : 1"=40'  
VERT. : 1"=4'



PROFILE  
HOR. : 1"=40'  
VERT. : 1"=4'



PROFILE  
HOR. : 1"=40'  
VERT. : 1"=4'



**SLATER HANIFAN GROUP**  
CONSULTING ENGINEERS & PLANNERS  
5740 S. ARVILLE STREET #216, LAS VEGAS, NV 89118  
PHONE (702) 264-5300 FAX (702) 264-5300

**CENTURY COMMUNITIES**  
SKYE CANYON PARCEL 1.4  
PLAN AND PROFILE - SKYE FALLS ST  
SFA-16+65.00-FO-STA-19+50.00-8-SD-LATERALS

CITY OF LAS VEGAS, NV

DATE: 4/13/15  
DRAFTER: JW/JM  
DESIGNER: MAK  
CHECKED: TMM

PROJECT NO.  
**OLY1401-004**

**PP-11**  
SHEET 19 OF 40  
H #57648  
CLV #10715003-1.4