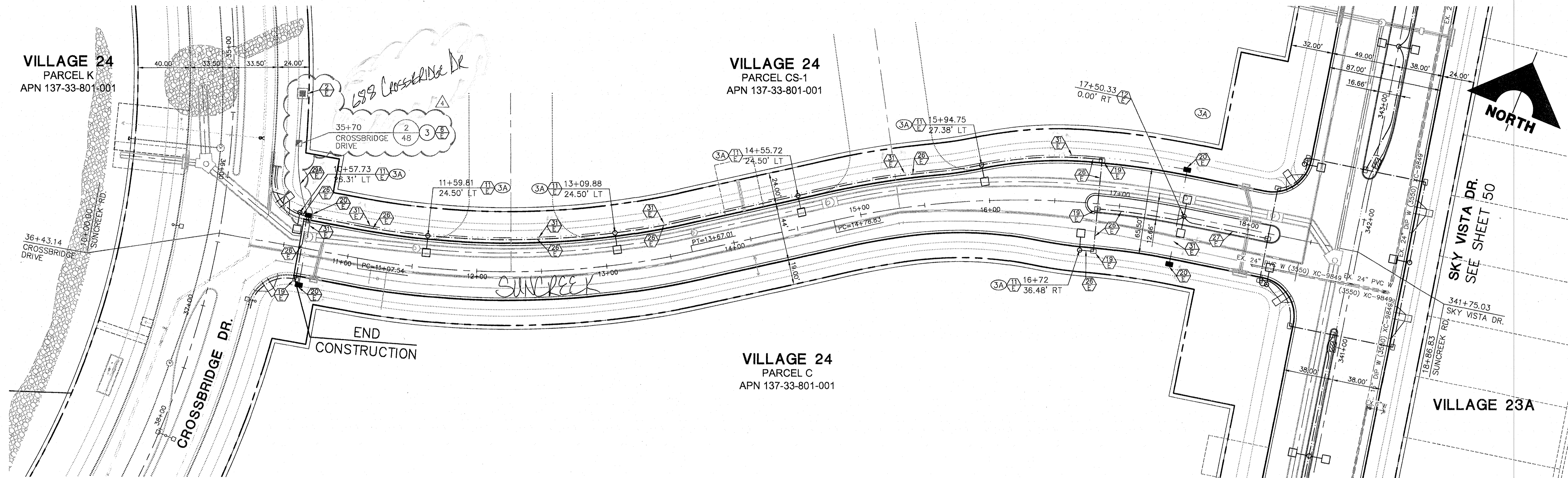


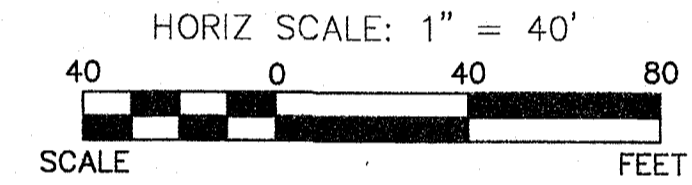
VILLAGE 24
PARCEL K
APN 137-33-801-001

VILLAGE 24
PARCEL CS-1
APN 137-33-801-001

VILLAGE 24
PARCEL C
APN 137-33-801-001

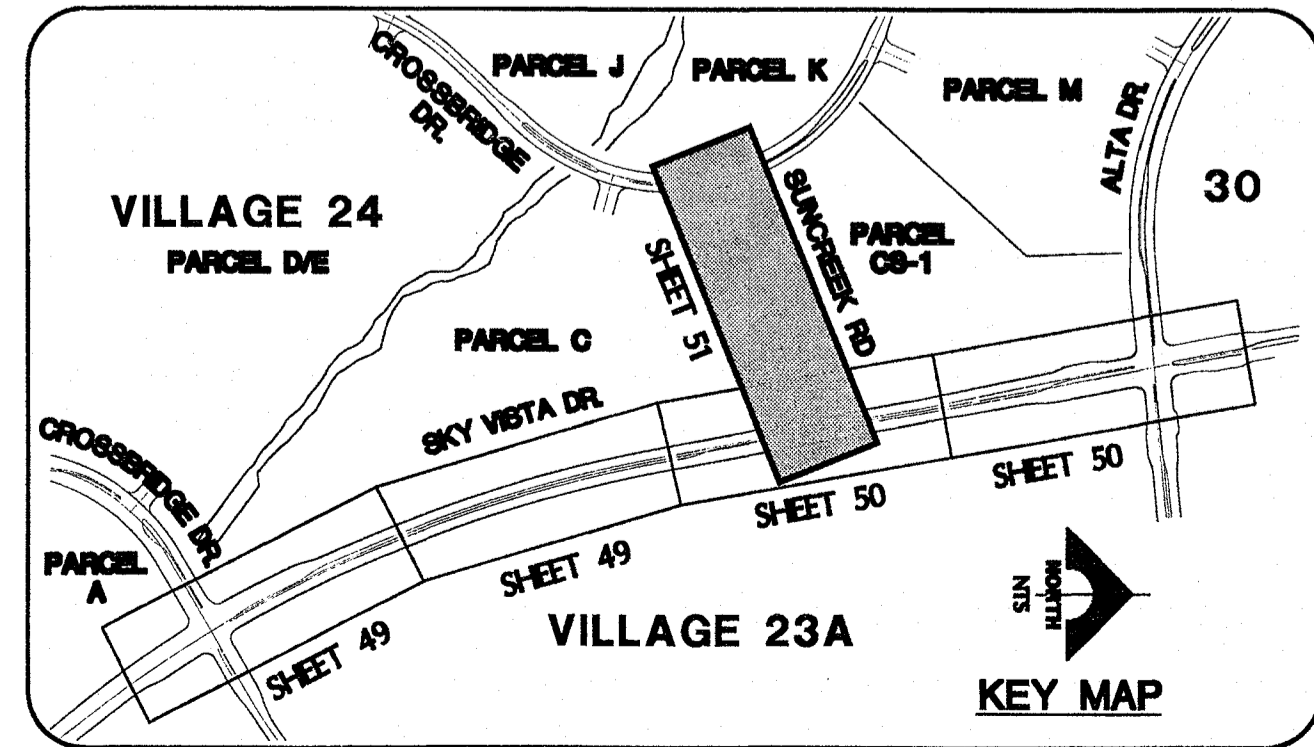


SUNCREEK ROAD (PUBLIC)



ELECTRICAL CONSTRUCTION NOTES

- 1 EXISTING N.P.CO. TRANSFORMER
- 2 PROPOSED N.P.CO. TRANSFORMER
- 3 EXISTING SP4. REFER TO ELECTRICAL SERVICE NOTES
- 4 EXISTING SP5. REFER TO ELECTRICAL SERVICE NOTES
- 5 PROPOSED SP1. REFER TO ELECTRICAL SERVICE NOTES & DETAIL 2 SHEET 48
- 6 PROPOSED SP3. REFER TO ELECTRICAL SERVICE NOTES & DETAIL 2 SHEET 48
- 7 PROPOSED TRAFFIC SIGNAL CONTROLLER CABINET REFER TO DETAIL 1 SHEET 48
- 8 EXISTING TRAFFIC SIGNAL CONTROLLER CABINET
- 9 CONNECT TO EXISTING CONDUIT STUB
- 10 STUB OUT AND CAP
- 11 PROPOSED TYPE 2B SINGLE LUMINAIRE PER SSD E-1
- 12 PROPOSED TYPE 2C SINGLE LUMINAIRE PER SSD E-1
- 13 PROPOSED TYPE 2B TWIN LUMINAIRE PER SSD E-1
- 14 PROPOSED TYPE 2A MOD 1 LUMINAIRE WITH PROVISION FOR FUTURE TRAFFIC SIGNAL MAST ARM PER SSD E-1
- 15 EXISTING STREET LIGHT
- 16 EXISTING NO. 3-1/2 PULLBOX
- 17 EXISTING NO. 5 PULLBOX
- 18 EXISTING NO. 7 PULLBOX
- 19 EXISTING TYPE 200 PULLBOX
- 20 PROPOSED NO. 3-1/2 PULLBOX PER USD 326
- 21 PROPOSED NO. 5 PULLBOX PER USD 326
- 22 PROPOSED NO. 7 PULLBOX PER USD 326
- 23 PROPOSED P30 PULLBOX PER USD 404.132
- 24 PROPOSED TYPE 200 PULLBOX PER USD 404.133
- 25 FUTURE TYPE 2B SINGLE LUMINAIRE PER SSD E-1
- 26 FUTURE CONDUIT
- 27 PROPOSED 1-1/4" CONDUIT CONTAINING 2#4, 1#8 GND [STREET LIGHTING]
- 28 PROPOSED 1-1/4" CONDUIT ONLY [STREET LIGHTING]
- 29 PROPOSED (5) 3" CONDUITS [INTERSECTION LUMINAIRES AND TRAFFIC SIGNAL] AND 4" CONDUIT ONLY [FUTURE TRAFFIC SIGNAL INTERCONNECT] INSTALL 2#10, 1#10 GND IN EACH OF (4) 3" CONDUITS
- 30 PROPOSED (2) 2" CONDUIT CONTAINING 2#4, 1#8 GND [STREET LIGHTING]
- 31 PROPOSED 2" CONDUIT CONTAINING 2#10, 1#8 GND [INTERSECTION LUMINAIRES] AND 2" CONDUIT ONLY [FUTURE TRAFFIC SIGNAL]
- 32 PROPOSED 2" CONDUIT ONLY [FUTURE SCHOOL FLASHER]
- 33 PROPOSED 3" CONDUIT CONTAINING 2#10, 1#8 GND [INTERSECTION LUMINAIRES]
- 34 PROPOSED (2) 3" CONDUIT CONTAINING 2#10, 1#8 GND [INTERSECTION LUMINAIRES]
- 35 PROPOSED 3" CONDUIT ONLY [FUTURE TRAFFIC SIGNAL]
- 36 PROPOSED (2) 3" CONDUIT ONLY [FUTURE TRAFFIC SIGNAL]
- 37 PROPOSED 4" CONDUIT ONLY [FUTURE TRAFFIC SIGNAL INTERCONNECT W/2' RADIUS BENDS]
- 38 EXISTING 1-1/4" CONDUIT CONTAINING 2#4, 1#8 GND [STREET LIGHTING]
- 39 EXISTING (2) 1-1/4" CONDUIT CONTAINING 2#4, 1#8 GND [STREET LIGHTING]
- 40 EXISTING 1-1/4" CONDUIT ONLY [STREET LIGHTING]
- 41 EXISTING 2" CONDUIT ONLY [FUTURE SCHOOL FLASHER]
- 42 EXISTING 2" CONDUIT ONLY [POWER TO TRAFFIC SIGNAL CONTROLLER] INSTALL 2#4, 1#8 GND IN EXISTING CONDUIT [SP5]
- 43 EXISTING (4) 3" CONDUITS CONTAINING 2#10, 1#10 GND EACH [STREET LIGHTING] EXISTING (1) 3" EXISTING CONDUIT ONLY [FUTURE TRAFFIC SIGNAL] EXISTING (1) 4" CONDUIT ONLY [FUTURE TRAFFIC INTERCONNECT]
- 44 EXISTING 4" CONDUIT ONLY [FUTURE TRAFFIC SIGNAL INTERCONNECT]
- 45 EXISTING TYPE 2A MOD 1 LUMINAIRE WITH PROVISION FOR FUTURE TRAFFIC SIGNAL MAST ARM PER SSD E-1
- 46 EXISTING 3" CONDUIT CONTAINING 2#10, 1#8 GND [INTERSECTION LUMINAIRES]
- 47 EXISTING 3" CONDUIT ONLY [FUTURE TRAFFIC SIGNAL]
- 48 EXISTING 2" CONDUIT CONTAINING 2#10, 1#8 GND [INTERSECTION LUMINAIRES] AND 2" CONDUIT ONLY [FUTURE TRAFFIC SIGNAL]
- 49 EXISTING 2" CONDUIT CONTAINING 2#4, 1#8 GND [STREET LIGHTING]
- 50 PROPOSED (2) 1-1/4" CONDUIT CONTAINING 2#4, 1#8 GND [STREET LIGHTING]
- 51 EXISTING 1-1/4" CONDUIT ONLY [STREET LIGHTING] ADD 2#4, 1#8 GND [STREET LIGHTING]
- 52 EXISTING 1-1/4" CONDUIT ONLY [STREET LIGHTING] ADD (2) 2#4, (2) 1#8 GND
- 53 EXISTING 1-1/4" CONDUIT CONTAINING 2#4, 1#8 GND [STREET LIGHTING] ADD 2#4, 1#8 GND
- 54 CONNECT NEW 2#4, 1#8 GND TO EXISTING 2#4, 1#8 GND (CIRCUIT 5B) [STREET LIGHTING]

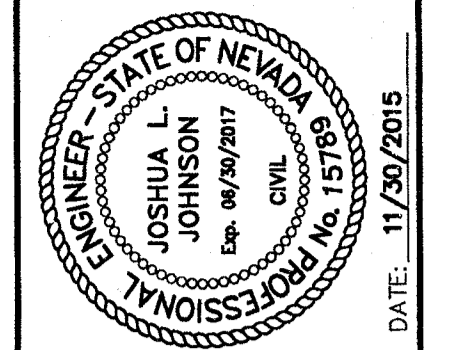


Call before you Dig
1-800-227-2800
CLAY COUNTY PUBLIC UTILITIES
1-702-455-7544

CALL BEFORE YOU DIG
1-702-227-2929

FAST
Call before you UnderGround.
1-702-432-5900

PROFESSIONAL ENGINEER - STATE OF NEVADA
JOHN T. BROWN
Exp. 12/31/2018
ELECTRICAL
No. 16055
DATE: _____
FOR ELECTRICAL COMPONENTS ONLY



PROJECT NO.	DESIGN	DRAWN	CHECK	REV	DATE	AGENCY	DATE	DESCRIPTION
62024-221	GCW	GCW	JLJ					

G.C. WALLACE COMPANIES
ENGINEERS | PLANNERS | SURVEYORS
1555 S. RAINBOW BLVD. - LAS VEGAS, NV 89146
T: 702.804.2000 F: 702.804.2299 GCWALLACE.COM

LAS VEGAS
F:\Projects\600\62024-221\DWG\Production\V24-51-EL3.dwg
Paul Bremard

THE HOWARD HUGHES COMPANY, LLC
VILLAGE 23A/24 - SKY VISTA IMPROVEMENT PLANS
DESERT MOON DR TO ALTA DR INCLUDING SUNCREEK RD
STREET LIGHT, MASTER CONDUIT
AND ELECTRICAL PLAN 3

PAWNEK ELECTRIC
702.857.7475

TRAFFIC SIGNAL AS-BUILTS