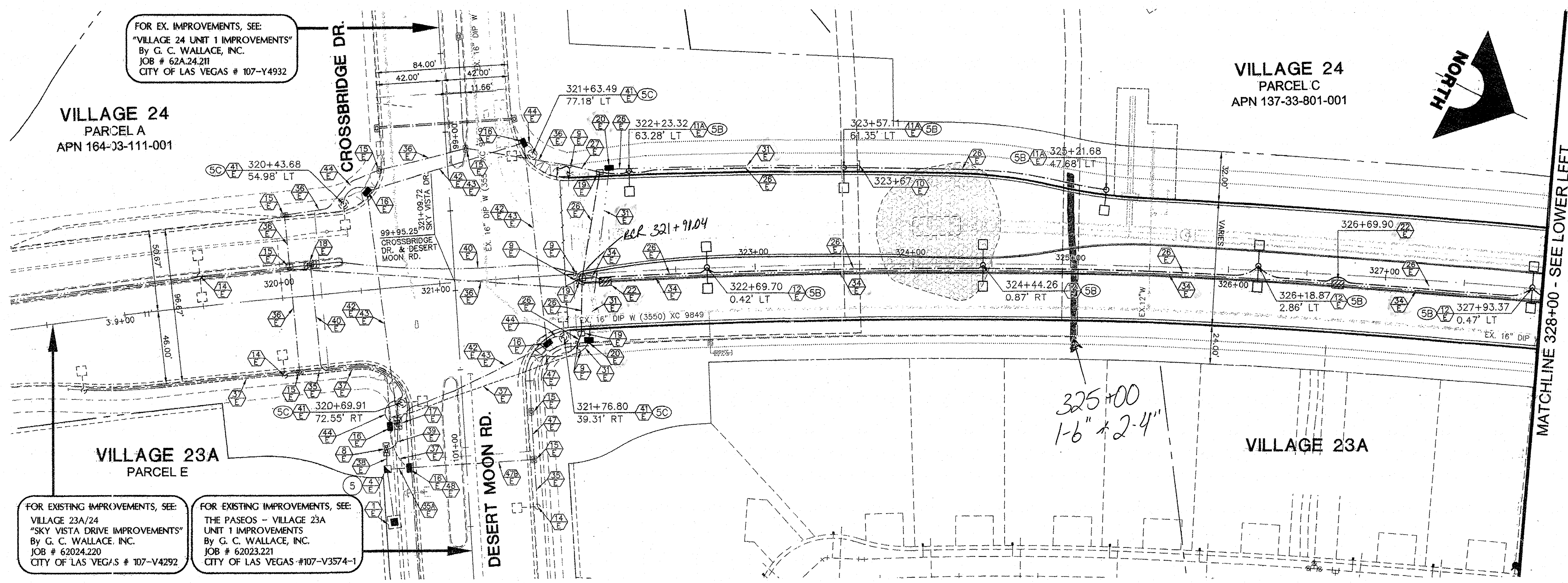
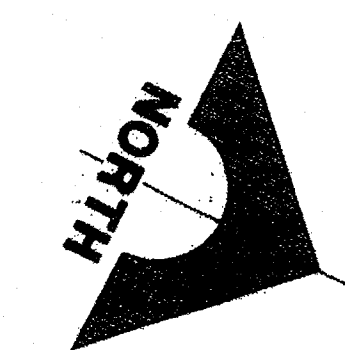


FOR EX. IMPROVEMENTS, SEE:  
"VILLAGE 24 UNIT 1 IMPROVEMENTS"  
By G. C. WALLACE, INC.  
JOB # 62A-24-211  
CITY OF LAS VEGAS # 107-Y4932

VILLAGE 24  
PARCEL A  
APN 164-33-111-001

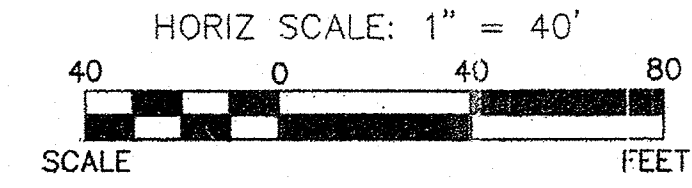
VILLAGE 24  
PARCEL C  
APN 137-33-801-001



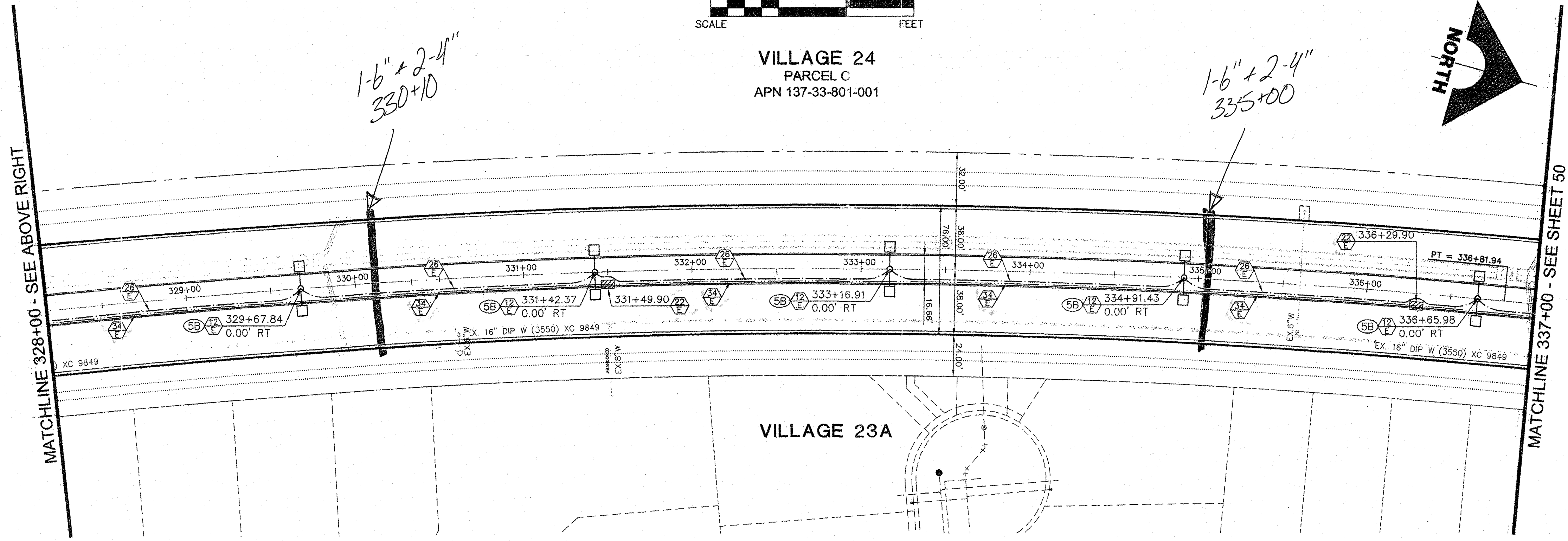
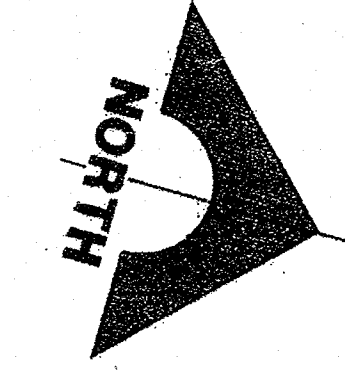
FOR EXISTING IMPROVEMENTS, SEE:  
VILLAGE 23A/24  
"SKY VISTA DRIVE IMPROVEMENTS"  
By G. C. WALLACE, INC.  
JOB # 62024.220  
CITY OF LAS VEGAS # 107-V4292

FOR EXISTING IMPROVEMENTS, SEE:  
THE PASEOS - VILLAGE 23A  
UNIT 1 IMPROVEMENTS  
By G. C. WALLACE, INC.  
JOB # 62023.221  
CITY OF LAS VEGAS #107-V3574-1

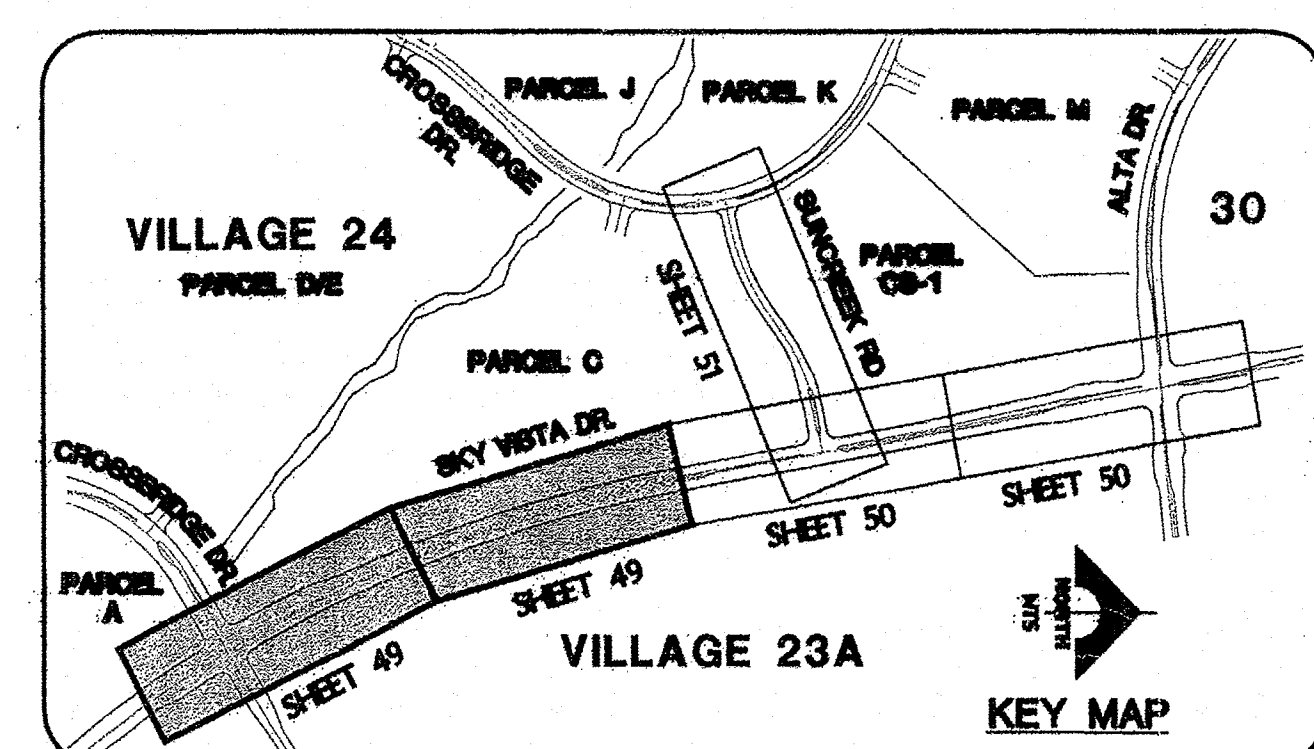
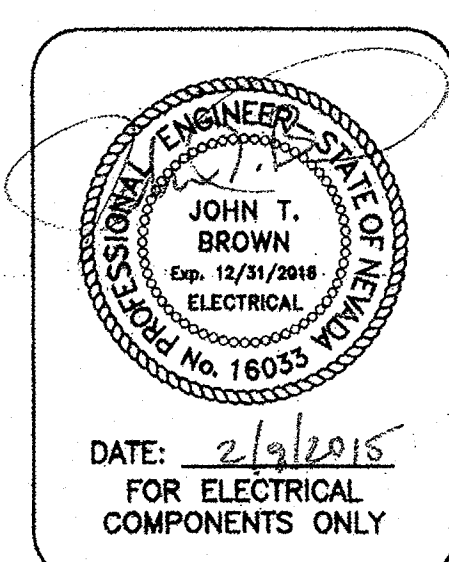
SKY VISTA DRIVE (PUBLIC)



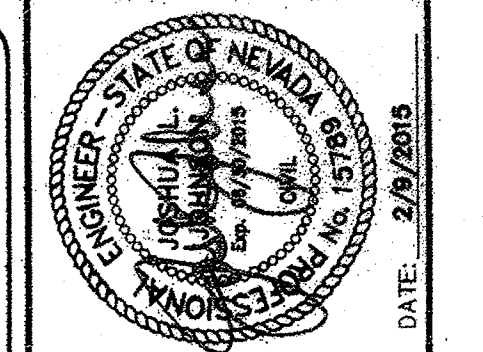
VILLAGE 24  
PARCEL C  
APN 137-33-801-001



VILLAGE 23A



- ELECTRICAL CONSTRUCTION NOTES**
- EXISTING N.P.CO. TRANSFORMER
  - PROPOSED N.P.CO. TRANSFORMER
  - EXISTING SP4. REFER TO ELECTRICAL SERVICE NOTES
  - EXISTING SP5. REFER TO ELECTRICAL SERVICE NOTES
  - PROPOSED SP1. REFER TO ELECTRICAL SERVICE NOTES & DETAIL 2 SHEET 39
  - PROPOSED SP3. REFER TO ELECTRICAL SERVICE NOTES & DETAIL 2 SHEET 39
  - PROPOSED TRAFFIC SIGNAL CONTROLLER CABINET REFER TO DETAIL 1 SHEET 39
  - EXISTING TRAFFIC SIGNAL CONTROLLER CABINET
  - CONNECT TO EXISTING CONDUIT STUB
  - STUB OUT AND CAP
  - PROPOSED TYPE 2B SINGLE LUMINAIRE PER SSD E-1
  - PROPOSED TYPE 2C SINGLE LUMINAIRE PER SSD E-1
  - PROPOSED TYPE 2B TWIN LUMINAIRE PER SSD E-1
  - PROPOSED TYPE 2A MOD 1 LUMINAIRE WITH PROVISION FOR FUTURE TRAFFIC SIGNAL MAST ARM PER SSD E-1
  - EXISTING STREET LIGHT
  - EXISTING NO. 3-1/2 PULLBOX
  - EXISTING NO. 5 PULLBOX
  - EXISTING NO. 7 PULLBOX
  - EXISTING TYPE 200 PULLBOX
  - PROPOSED NO. 3-1/2 PULLBOX PER USD 326
  - PROPOSED NO. 5 PULLBOX PER USD 326
  - PROPOSED NO. 7 PULLBOX PER USD 326
  - PROPOSED P30 PULLBOX PER USD 404.132
  - PROPOSED TYPE 200 PULLBOX PER USD 404.133
  - FUTURE TYPE 2B SINGLE LUMINAIRE PER SSD E-1
  - FUTURE CONDUIT
  - PROPOSED 1-1/4" CONDUIT CONTAINING 2#4, 1#8 GND [STREET LIGHTING]
  - PROPOSED 1-1/4" CONDUIT ONLY [STREET LIGHTING]
  - PROPOSED (5) 3" CONDUITS [INTERSECTION LUMINAIRES AND TRAFFIC SIGNAL] AND 4" CONDUIT ONLY [FUTURE TRAFFIC SIGNAL INTERCONNECT] INSTALL 2#10, 1#10 GND IN EACH OF (4) 3" CONDUITS
  - PROPOSED 2" CONDUIT CONTAINING 2#4, 1#8 GND [STREET LIGHTING]
  - PROPOSED (2) 2" CONDUIT CONTAINING 2#4, 1#8 GND [STREET LIGHTING]
  - PROPOSED 2" CONDUIT CONTAINING 2#10, 1#8 GND [INTERSECTION LUMINAIRES] AND 2" CONDUIT ONLY [FUTURE TRAFFIC SIGNAL]
  - PROPOSED 2" CONDUIT ONLY [FUTURE SCHOOL FLASHER]
  - PROPOSED 3" CONDUIT CONTAINING 2#10, 1#8 GND [INTERSECTION LUMINAIRES]
  - PROPOSED (2) 3" CONDUIT CONTAINING 2#10, 1#8 GND [INTERSECTION LUMINAIRES]
  - PROPOSED 3" CONDUIT ONLY [FUTURE TRAFFIC SIGNAL]
  - PROPOSED (2) 3" CONDUIT ONLY [FUTURE TRAFFIC SIGNAL]
  - PROPOSED 4" CONDUIT ONLY [FUTURE TRAFFIC SIGNAL INTERCONNECT W/2" RADIUS BENDS]
  - EXISTING 1-1/4" CONDUIT CONTAINING 2#4, 1#8 GND [STREET LIGHTING]
  - EXISTING (2) 1-1/4" CONDUIT CONTAINING 2#4, 1#8 GND [STREET LIGHTING]
  - EXISTING 1-1/4" CONDUIT ONLY [STREET LIGHTING]
  - EXISTING 2" CONDUIT ONLY [FUTURE SCHOOL FLASHER]
  - EXISTING 2" CONDUIT ONLY [POWER TO TRAFFIC SIGNAL CONTROLLER] INSTALL 2#4, 1#8 GND IN EXISTING CONDUIT [SP5]
  - EXISTING (4) 3" CONDUITS CONTAINING 2#10, 1#10 GND EACH [STREET LIGHTING] EXISTING (1) 3" EXISTING CONDUIT ONLY [FUTURE TRAFFIC SIGNAL] EXISTING (1) 4" CONDUIT ONLY [FUTURE TRAFFIC INTERCONNECT]
  - EXISTING 4" CONDUIT ONLY [FUTURE TRAFFIC SIGNAL INTERCONNECT]
  - EXISTING TYPE 2A MOD 1 LUMINAIRE WITH PROVISION FOR FUTURE TRAFFIC SIGNAL MAST ARM PER SSD E-1
  - EXISTING 3" CONDUIT CONTAINING 2#10, 1#8 GND [INTERSECTION LUMINAIRES]
  - EXISTING 3" CONDUIT ONLY [FUTURE TRAFFIC SIGNAL]
  - EXISTING 2" CONDUIT CONTAINING 2#10, 1#8 GND [INTERSECTION LUMINAIRES] AND 2" CONDUIT ONLY [FUTURE TRAFFIC SIGNAL]
  - EXISTING 2" CONDUIT CONTAINING 2#4, 1#8 GND [STREET LIGHTING]
  - PROPOSED (2) 1-1/4" CONDUIT CONTAINING 2#4, 1#8 GND [STREET LIGHTING]
  - EXISTING 1-1/4" CONDUIT ONLY ADD 2#4, 1#8 GND [STREET LIGHTING]
  - EXISTING 1-1/4" CONDUIT ONLY [STREET LIGHTING] ADD (2) 2#4, (2) 1#8 GND
  - EXISTING 1-1/4" CONDUIT CONTAINING 2#4, 1#8 GND [STREET LIGHTING] ADD 2#4, 1#8 GND
  - CONNECT NEW 2#4, 1#8 GND TO EXISTING 2#4, 1#8 GND [CIRCUIT 5B] [STREET LIGHTING]



PROJECT NO.	DATE	DESCRIPTION
62024-221		

G.C. WALLACE COMPANIES  
ENGINEERS | PLANNERS | SURVEYORS  
170886-0000 P: 702-432-2225 F: 702-432-2226  
LAS VEGAS, NV  
F:\Projects\600\62024-221\DWG\Production\V24-221-49-EL.dwg  
Enk\_Mar.persson

THE HOWARD HUGHES COMPANY, LLC  
VILLAGE 23A/24 - SKY VISTA IMPROVEMENT PLANS  
DESERT MOON DR TO ALTA DR INCLUDING SUNCREEK RD  
STREET LIGHT, MASTER CONDUIT  
AND ELECTRICAL PLAN 1  
DRAWING  
49  
49 OF 54 SHTS



SID NO. 812 PROJECT 5 AND 12  
SID NO. 809 PROJECT 13 AND 810 PROJECT 8

TRAFFIC SIGNAL AS-BUILTS