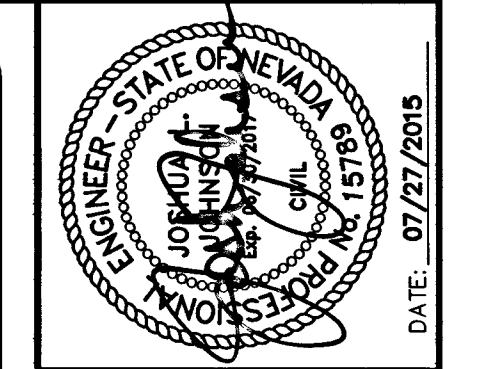
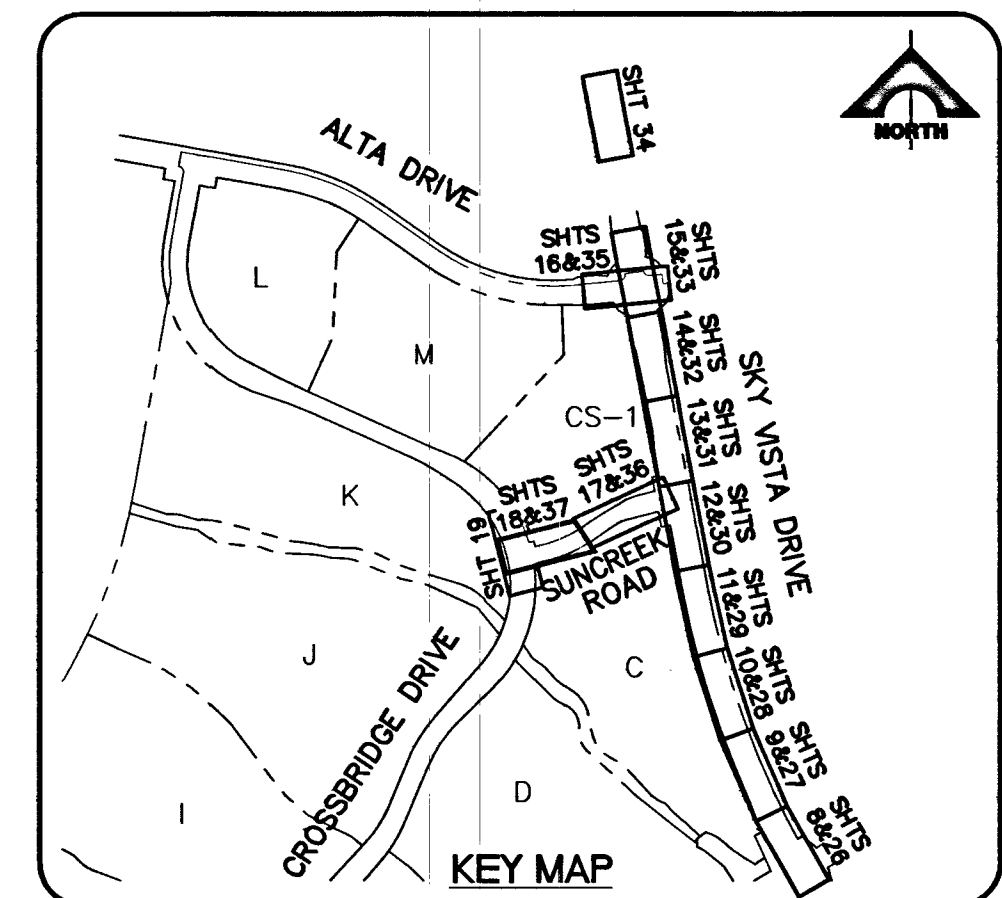


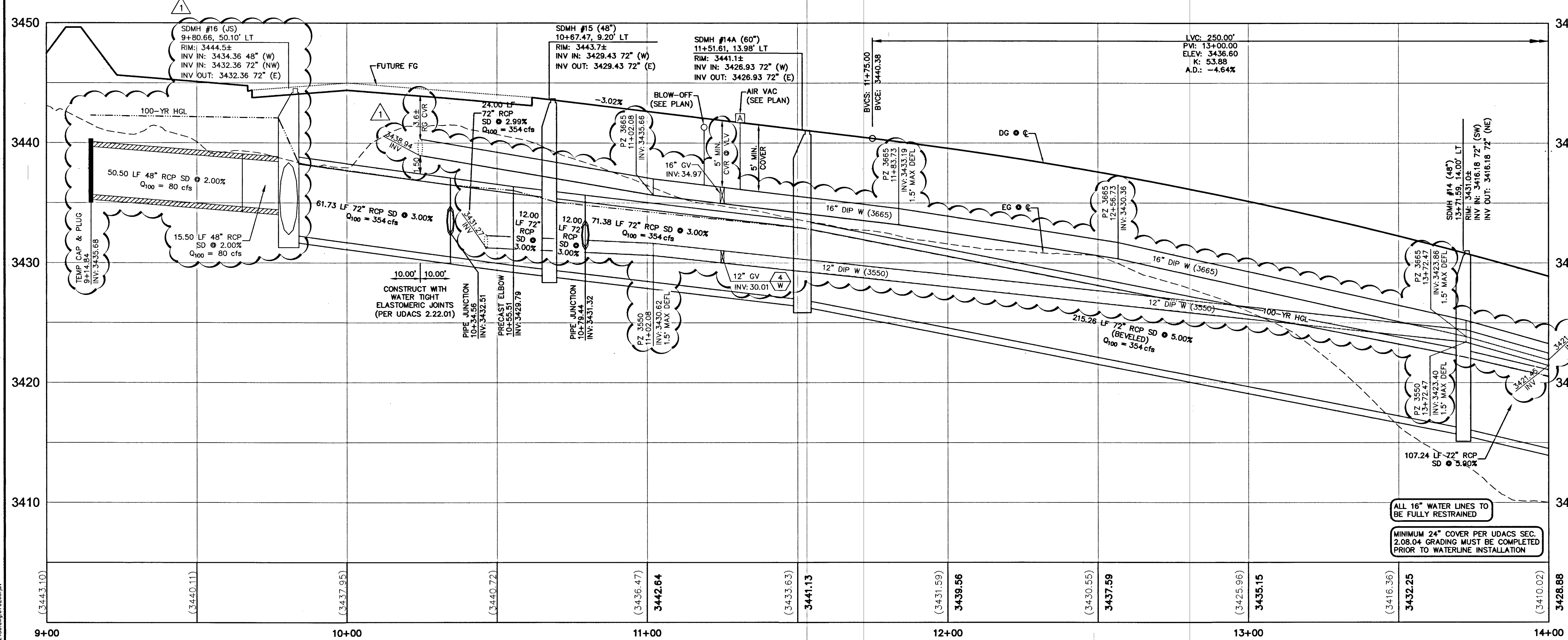
SUNCREEK ROAD (PUBLIC)

HORIZ SCALE: 1" = 20'
VERT SCALE: 1" = 5'



PROJECT NO.	62024-221
DESIGN	GCW
DRAWN	GCW
CHECK	JLJ
DATE	07/27/2015

- IMPROVEMENT NOTES:**
- PROTECT IN PLACE AND ADJUST TO GRADE AS REQUIRED
 - RELOCATE WATER APPURTENANCES (VALVES TO REMAIN ACCESSIBLE AT ALL TIMES)
- WATER CONSTRUCTION NOTES:**
- INSTALL FIRE HYDRANT PER UDAC'S PLT. NO. 39 & 40
 - INSTALL TEE/CROSS PER UDAC'S PLT. NO. 31
 - INSTALL BEND PER UDAC'S PLT. NO. 31. (SEE PLAN FOR)
 - INSTALL GATE VALVE PER UDAC'S PLT. NO. 30 AND 39
 - INSTALL REDUCER PER UDAC'S PLT. NO. 30
 - INSTALL CAP W/ 2" BLOW-OFF ASSEMBLY PER UDAC'S PLT. NO. 36
 - INSTALL 6" MANUAL BLOW OFF PER UDAC'S PLT. NO. 37
 - INSTALL STEEL CASING PER UDAC'S PLATE 22 & 23
 - INSTALL VERT. 45° BEND PER UDAC'S PLT. NO. 31
 - REMOVE CAP & BLOW-OFF PER UDAC'S PLT. NO. 36 AND CONNECT TO EXISTING WATER LINE
- SEWER CONSTRUCTION NOTES:**
- INSTALL 48" SEWER MANHOLE
 - INSTALL 60" SEWER MANHOLE
 - INSTALL TEMPORARY PLUG AND CAP SEWER STUB
 - INSTALL ELASTOMERIC JOINT SEALANT AT ALL MANHOLE JOINTS
 - REMOVE EXISTING PLUG AND CONNECT TO EXISTING SEWER LINE
- STORM DRAIN CONSTRUCTION NOTES:**
- INSTALL TYPE "CMZ" DROP INLET PER USD DWG. NO. 412.1 AND 421
 - NOT USED
 - INSTALL TYPE III MANHOLE PER USD DWG. NO. 406
 - INSTALL JUNCTION STRUCTURE
 - INSTALL PRECAST MANHOLE TEE W/ 48" DIA. RISER
 - INSTALL PRECAST MANHOLE TEE W/ 60" DIA. RISER
 - INSTALL PRECAST ELBOW (SEE PLAN FOR)
 - INSTALL TEMPORARY PLUG AND CAP STORM DRAIN LINE
 - INSTALL CONCRETE COLLAR PER DETAIL 5 ON SHEET 42
 - REMOVE EXISTING PLUG AND CONNECT TO EXISTING STORM DRAIN LINE
- FRIGIGATION CONSTRUCTION NOTES:**
- BANK "A": 1-6" & 2-4" SCH 40 PVC PER DETAIL 1 ON SHEET 42
 - BANK "B": 2-4" SCH. 40 PVC PER DETAIL 2 ON SHEET 42
- * CONTRACTOR TO VERIFY SIZE AND LOCATION OF EXISTING UTILITIES PRIOR TO CONSTRUCTION



NOTE

THIS SET OF DRAWINGS IS BASED UPON NAVD 88 DATUM. PREVIOUS DRAWINGS MAY BE BASED ON OTHER DATUM. CARE SHOULD BE OBSERVED WHEN UTILIZING THIS SET OF DRAWINGS

BASIS OF BEARINGS

SOUTH 89°47'23" EAST, BEING THE BEARING OF THE NORTH LINE OF SECTION 33, TOWNSHIP 20 SOUTH, RANGE 59 EAST, M.D.M., CITY OF LAS VEGAS, CLARK COUNTY, NEVADA AS SHOWN IN FILE 118, PAGE 100 OF PARCEL MAPS ON FILE AT THE CLARK COUNTY, NEVADA RECORDER'S OFFICE.

BENCHMARK

BM #	DESCRIPTION	NAVD 88 DATUM	NAVD 88 DATUM
CLV BM No. D368	U.S.C. & G.S. DISC SET IN ROCK RIDGE 150' SOUTH OF CHARLESTON BLVD & WEST OF DETENTION BASIN.	3246.63 (FEET)	989.574 (METERS)

APPROVED FOR CONSTRUCTION

R. Collins 7-27-15
CITY OF LAS VEGAS FIRE DEPARTMENT DATE

APPROVED FOR CONSTRUCTION 1ST APPD. 03/24/15

Disarper
LAS VEGAS VALLEY WATER DISTRICT ENGINEERING SERVICES MANAGER
PROJECT NO. #123259 DATE: 7/27/15

Call before you Dig
Call 1-800-777-2600 or 702-455-6000

FAST
Call before you UnderGround
1-702-432-5300

G.C. WALLACE COMPANIES
ENGINEERS | PLANNERS | SURVEYORS
205 N. MOON DR. SUITE 200
LAS VEGAS, NV 89106
TEL: 702.894.2800 FAX: 702.894.2259 GCW@GALLICE.COM

LAS VEGAS

PROJECT NO. 62024-221
DESIGN: GCW
DRAWN: GCW
CHECK: JLJ
DATE: 07-27-15
PLOT DATE: 08-24-15
PLOT TIME: 09:45:27

F:\Projects\600\62024-221\DWG\Production\V24-22-137-UT12.dwg
Paul Brammer

THE HOWARD HUGHES COMPANY, LLC

VILLAGE 23A/24 - SKY VISTA IMPROVEMENT PLANS
DESERT MOON DR TO ALTA DR INCLUDING SUNCREEK RD

SUNCREEK ROAD
UTILITY PLAN AND PROFILE 12

DRAWING
37

H#: 57159 CLV#: 107V6423

SID NO. 812 PROJECT 5 AND 12
SID NO. 809 PROJECT 13 AND 810 PROJECT 8