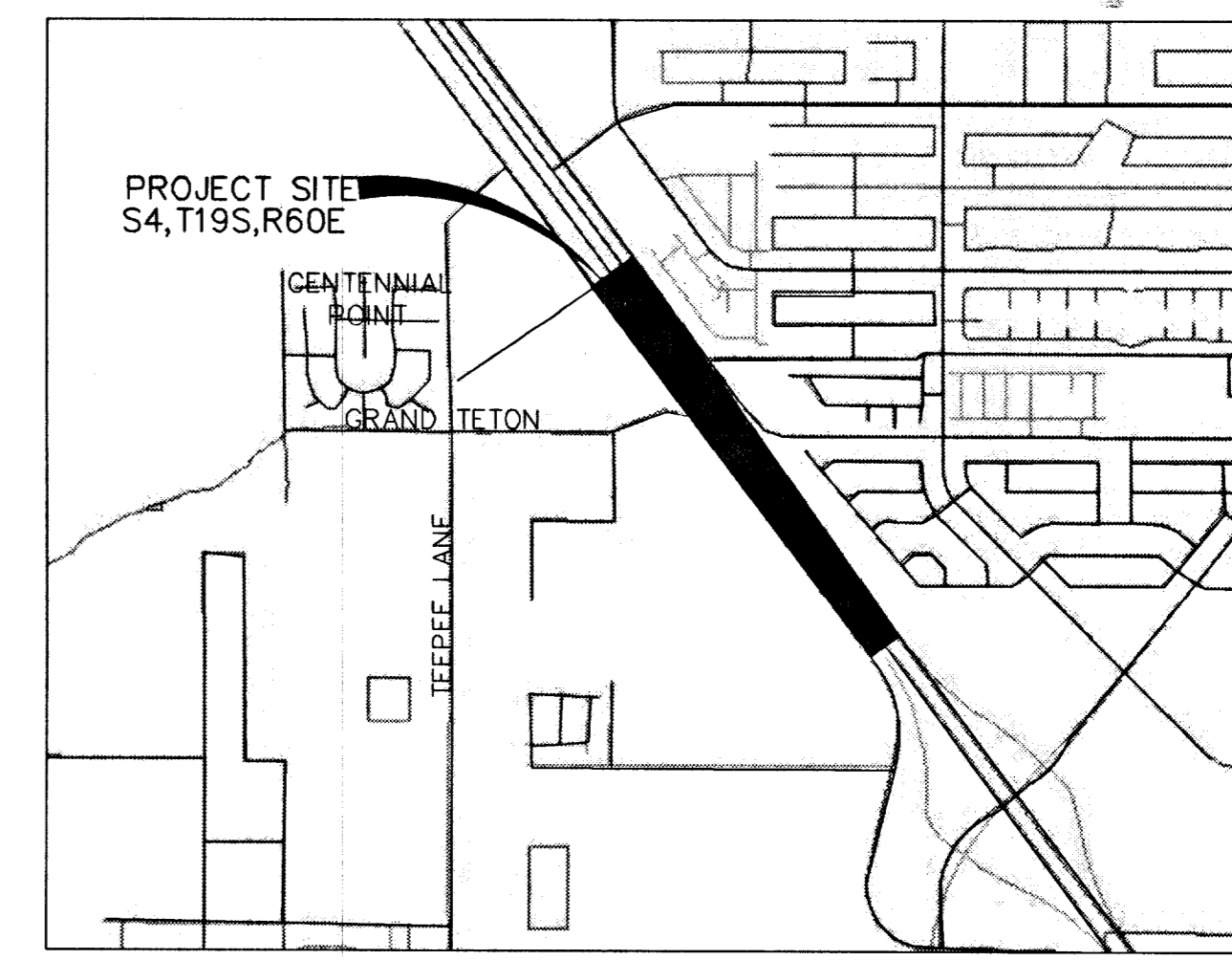


# SKY RIDGE OFF-SITE SEWER IMPROVEMENT PLANS FOR SOUTHWEST HOMES IN THE CITY OF LAS VEGAS, STATE OF NEVADA



VICINITY MAP  
NTS

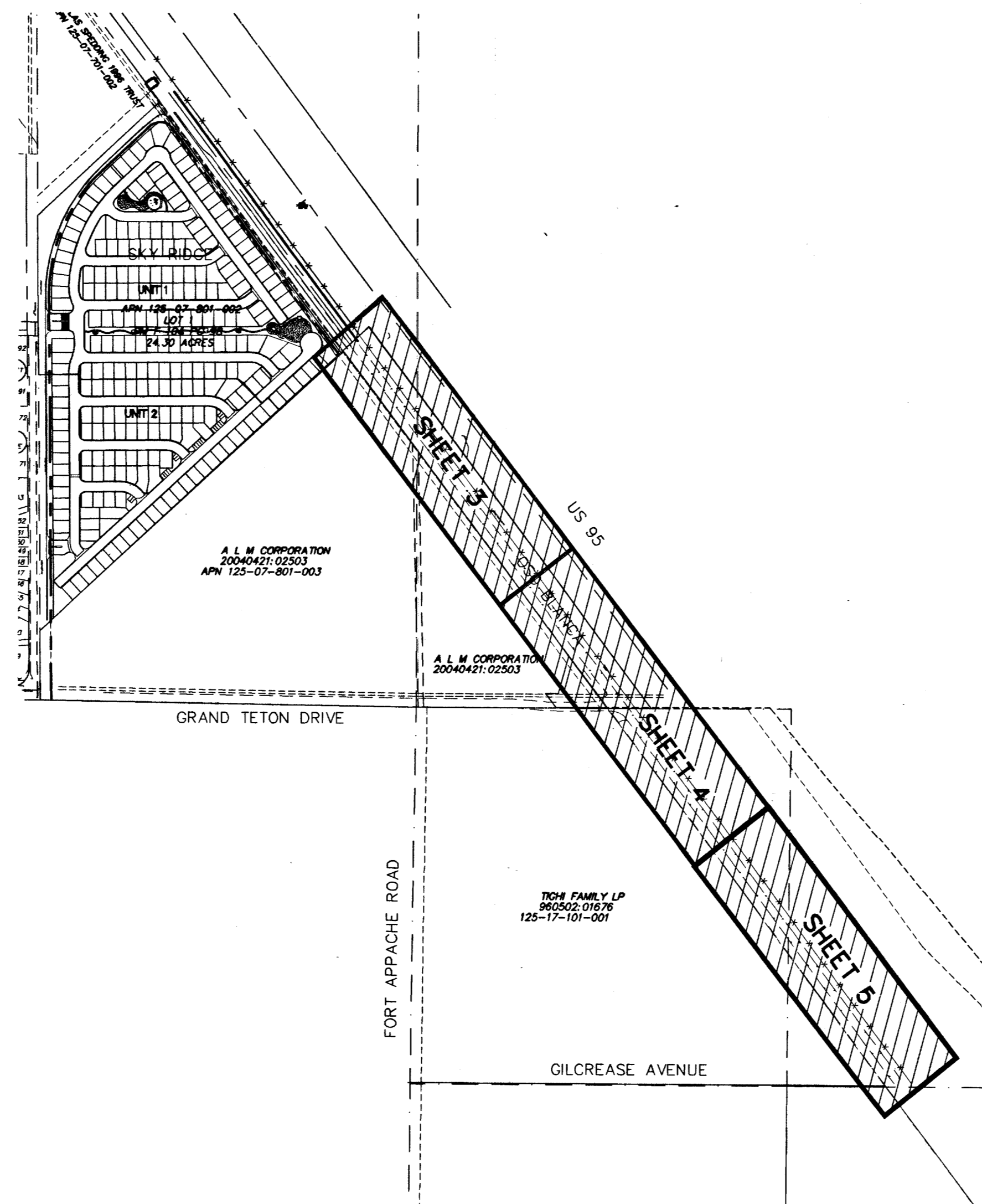


**OWNER/DEVELOPER**

SOUTHWEST HOMES, LLC  
SUITE 108  
245 E WARM SPRINGS ROAD  
LAS VEGAS, NV  
89119  
PHONE: 702-597-3233

**SHEET INDEX**

1. COVER SHEET
2. GENERAL NOTES & LEGEND
3. SEWER PLAN & PROFILE
4. SEWER PLAN & PROFILE
5. SEWER PLAN & PROFILE



**SITE PLAN**

**BASIS OF BEARINGS**

NORTH 89°18'40" WEST BEING THE NORTH LINE OF THE NORTHWEST QUARTER (NW 1/4) OF THE SOUTHWEST QUARTER (SE 1/4) OF SECTION 7, TOWNSHIP 19 SOUTH, RANGE 60 EAST, M.D.M., CLARK COUNTY, NEVADA. AS SHOWN BY MAP IN THE OFFICE OF THE CLARK COUNTY, NEVADA RECORDER IN FILE 87 OF SURVEYS PAGE 09.

**BENCHMARK**

CITY OF LAS VEGAS VERTICAL CONTROL  
RIVET AND PLATE IN CONCRETE CYLINDER  
● NW CORNER GRAND TETON & FORT APACHE  
STATION 8LV90  
7SES  
ELEVATION= 817.1475 METERS (NAVD88)  
2680.92 FEET

NEVADA POWER COMPANY ACKNOWLEDGES THAT WE HAVE RECEIVED YOUR PLANS AND WILL PROVIDE SERVICE TO ALL ELECTRICAL DEVICES ASSOCIATED WITH THIS PROJECT. NEVADA POWER COMPANY RESERVES THE RIGHT TO ADDRESS ANY EXISTING OR FUTURE CONFLICTS ONCE THE FINAL DESIGN IS COMPLETED. THE NEW SERVICE AND THE RESOLUTION OF ANY CONFLICTS WILL BE ACCOMPLISHED PURSUANT TO THE NEVADA PUBLIC UTILITY COMMISSION'S RULES AND REGULATIONS.

"The official Sprint Nevada approval does not assume or guarantee liability for known or unknown conflicts with existing or proposed improvements. Resolution of any conflict will be accomplished pursuant to Local Ordinances, Nevada Revised Statutes and/or Public Utility Commission Rules and Regulations."

**APPROVALS**

*Charles Kajkowski, Jr.* 8/17/2004  
CHARLES KAJKOWSKI, JR.; PE #4784 DATE  
CITY ENGINEER

APPROVAL OF THESE PLANS IS LIMITED TO THOSE IMPROVEMENTS CONSTRUCTED IN THE DEDICATED RIGHT-OF-WAY AND/OR DEDICATED EASEMENTS. THIS APPROVAL DOES NOT AUTHORIZE THE CONSTRUCTION OF ANY IMPROVEMENTS THAT DEVIATE FROM ADOPTED STANDARDS AND/OR SPECIFICATIONS, EXCEPT THOSE SPECIFICALLY LISTED UNDER DEVIATIONS FROM STANDARD. THE ENGINEER SHALL RESOLVE ANY DEVIATION OTHER THAN THOSE LISTED IN DEVIATIONS FROM STANDARDS IN FAVOR OF THE UNIFORM STANDARD DRAWINGS AND SPECIFICATIONS CLARK COUNTY AREA, NEVADA.

*Bryan F. Thatta* 8-12-04  
SOUTHWEST GAS CORPORATION DATE

*Janetta Odell* 8/11/04  
NEVADA POWER COMPANY DATE

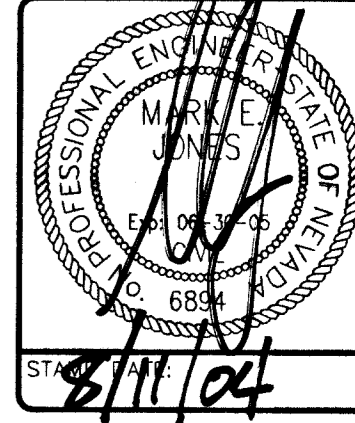
*Dean Whittem* 8/12/04  
SPRINT DATE

*Krista M. King* 8/11/04  
CDX COMMUNICATIONS, LAS VEGAS INC. DATE

SIGNATURE ON THESE PLANS WILL NOT BE CONSTRUED TO BE A PERMIT FOR OR AN APPROVAL OF ANY VIOLATION OF CLARK COUNTY SANITATION DISTRICT RULES, REGULATIONS, OR DESIGN AND CONSTRUCTION STANDARDS. THE APPROVAL OF THESE DRAWINGS DOES NOT GUARANTEE CAPACITY IN THE DISTRICT'S COLLECTION OR TREATMENT SYSTEMS.

*N/A*  
CLARK COUNTY SANITATION DISTRICT DATE

NO.	DATE	BY	APPROV.	REVISION DESCRIPTION



3610 North Rancho Drive  
Las Vegas, NV 89130  
Telephone: (702) 648-4143  
Fax: (702) 648-4143

**SOUTHWEST ENGINEERING**  
LAND PLANNING • MAPPING • DEVELOPMENT

TITLE: COVER SHEET  
PROJECT: OFF-SITE SEWER  
SKY RIDGE  
SOUTHWEST HOMES  
CITY OF LAS VEGAS, NEVADA

WORK ORDER NO.	030918
DESIGN BY:	TEAM 1
DATE:	4-9-04
SCALE:	AS SHOWN
CADFILE:	srl-cov
SHEET 1 OF 5 SHEETS	
CLV DWG NO.	30708A

72412

**NOTICE TO CONTRACTOR !**

EXISTING UTILITY LOCATIONS SHOWN HEREON ARE APPROXIMATE ONLY. IT SHALL BE THE CONTRACTOR'S RESPONSIBILITY TO DETERMINE THE EXACT VERTICAL AND HORIZONTAL LOCATION OF ALL EXISTING UNDERGROUND UTILITIES PRIOR TO COMMENCING CONSTRUCTION. NO REPRESENTATION IS MADE THAT ALL EXISTING UTILITIES ARE SHOWN HEREON. THE ENGINEER ASSUMES NO RESPONSIBILITY FOR UTILITIES NOT SHOWN OR UTILITIES NOT SHOWN IN THEIR PROPER LOCATION.

AVOID CUTTING UNDERGROUND UTILITIES. IT'S COSTLY.  
**CALL before you Dig**  
1-800-227-2600  
UNDERGROUND SERVICE (USA)

AVOID HITTING OVERHEAD POWER LINES. IT'S COSTLY.  
**CALL BEFORE YOU DO OVERHEAD**  
CALL 1-702-227-2929