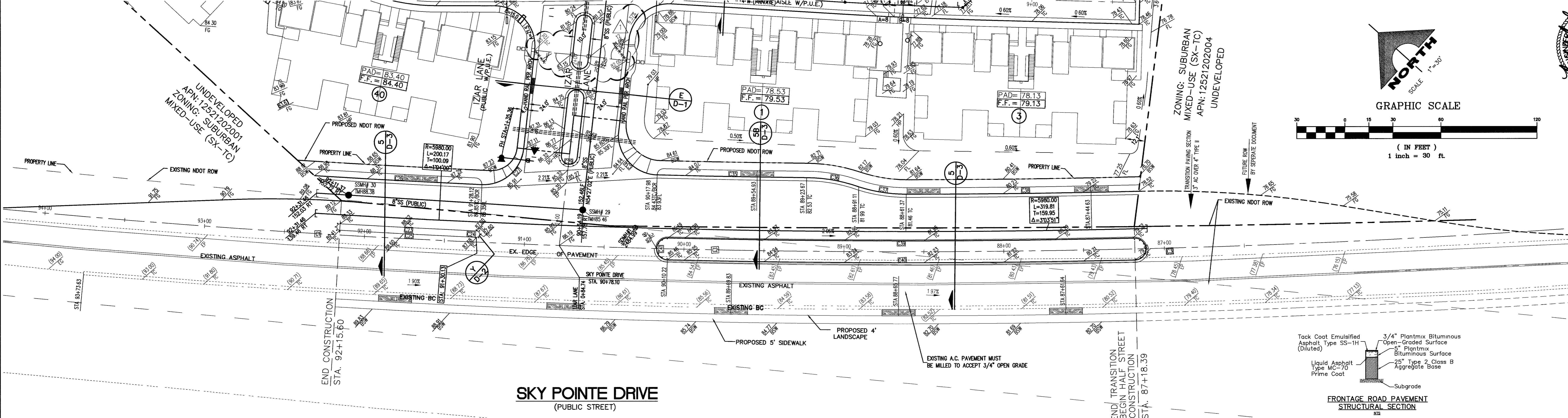
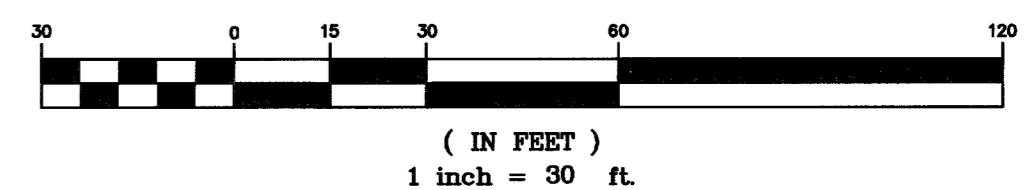
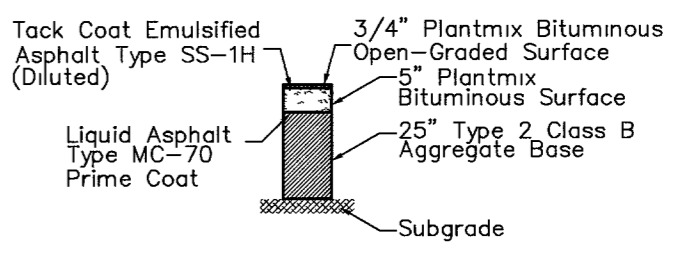


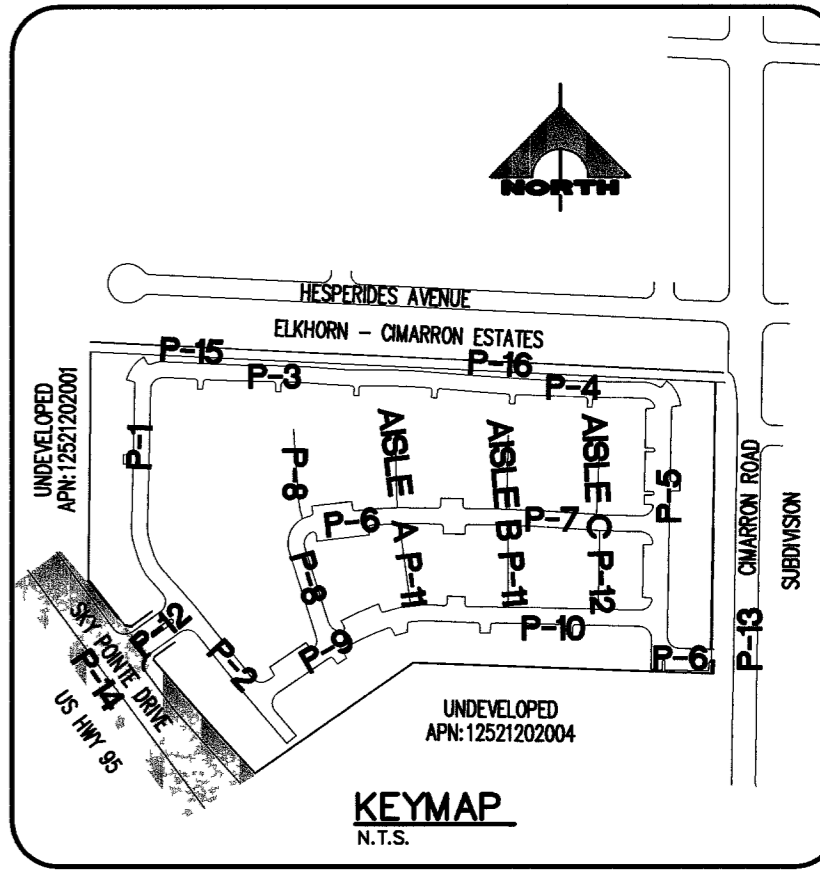
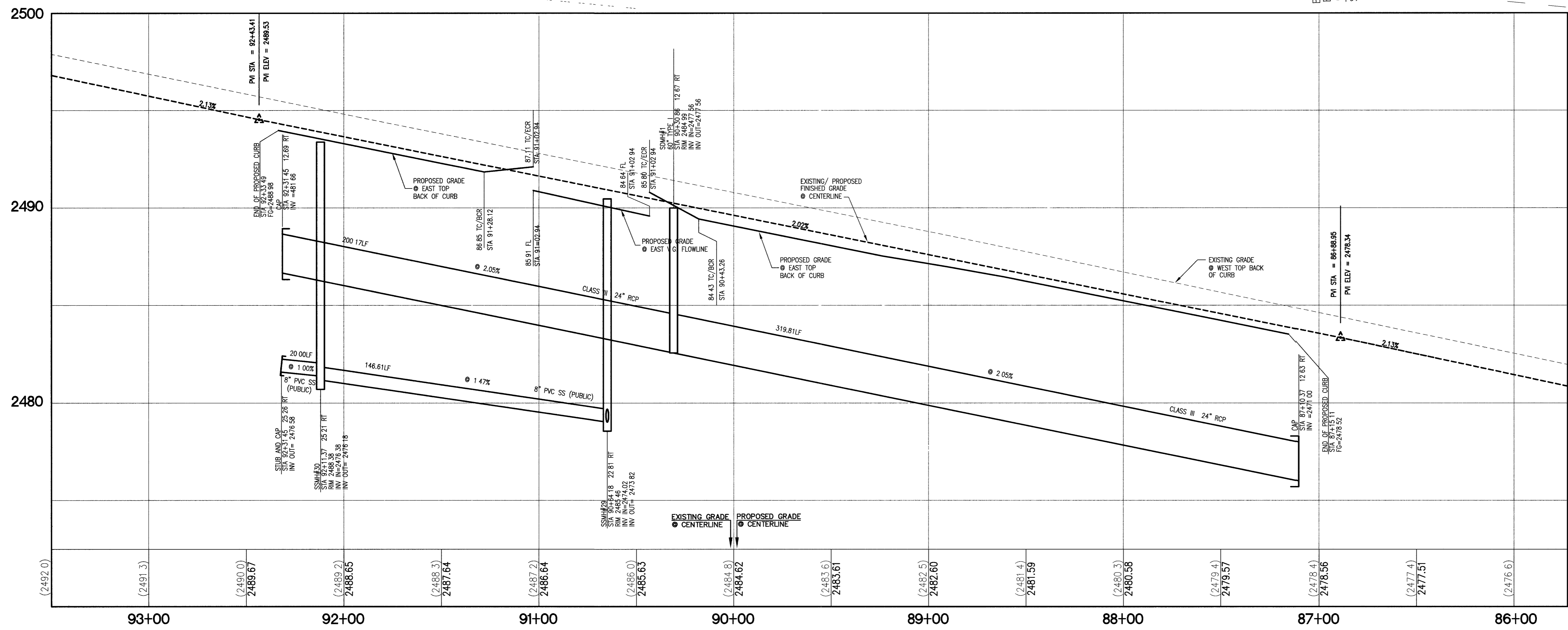
GRAPHIC SCALE



SKY POINTE DRIVE
 (PUBLIC STREET)



FRONTAGE ROAD PAVEMENT STRUCTURAL SECTION



CONSTRUCTION NOTES:

- ROADWAY NOTES:
- (A) CONSTRUCT 30" ROLL TYPE CURB PER TYPICAL SECTION 2/20-3
 - (B) CONSTRUCT 4" SIDEWALK PER STANDARD DRAWING NO. 234
 - (C) CONSTRUCT "L" TYPE ISLAND CURB PER STANDARD DRAWING NO. 219 (REVERSE PLANE)
 - (D) CONSTRUCT 8" WIDE VALLEY GUTTER PER STANDARD DRAWING NO. 228
 - (E) CONSTRUCT 10" CURB PER TYPICAL SECTION 1/D-3
 - (F) CONSTRUCT 10" TRANSITION FROM "L" TYPE TO ROLL CURB
 - (H) CONSTRUCT 10" TRANSITION FROM ROLL CURB TO VALLEY GUTTER
 - (I) CONSTRUCT 24" "L" TYPE CURB PER STANDARD DRAWING NO. 216
 - (J) CONSTRUCT SIDEWALK RAMP (CASE II/TABLE 1) PER STANDARD DRAWING NO. 235 AND TOWN CENTER STANDARDS (SEE GRADING SHEETS FOR "A" AND "B" DIMS)
 - (K) CONSTRUCT "A" TYPE ISLAND CURB PER STANDARD DRAWING NO. 219
 - (L) CONSTRUCT SIDEWALK DRAIN PER STANDARD US DRAWING #236
 - (M) CONSTRUCT 4.5" AC PAVEMENT OVER 4" TYPE II BASE, OVER 9" TYPE I
 - (N) CONSTRUCT 30" VALLEY GUTTER PER DETAIL 3/D-3
 - (O) CONSTRUCT 2" AC PAVEMENT OVER 4" TYPE II BASE
 - (P) CONSTRUCT "V" CHANNEL PER DETAIL 6/D-3
 - (Q) CONSTRUCT 16" X 4" WALL OPENING PER DETAIL 8/D-3
 - (R) CONSTRUCT VIEW FENCE PER DETAIL 4/D-3
 - (S) CONSTRUCT 5" SIDEWALK PER STANDARD DRAWING NO. 234
 - (T) CONSTRUCT "L" TYPE ISLAND CURB PER STANDARD DRAWING NO. 219
 - (U) CONSTRUCT 10" SIDEWALK PER STANDARD DRAWING NO. 234
 - (V) CONSTRUCT SIDEWALK DRAIN PER DETAIL 6/D-4
 - (W) SEE TRENCH DETAIL ON THIS SHEET FOR STORM DRAIN UNDER WALL FOOTING USE THIS TRENCH 5' BOTH SIDES FOOTING USE THIS
 - (X) INSTALL CONCRETE CAR STOPS

PROFILE

SCALE:
 HORIZ. 1" = 30'
 VERT. 1" = 3'

BACK OF CURB CURVE TABLE				
CURVE	DELTA	RADIUS	LENGTH	TANGENT
C23	0°49'08"	5973.00	85.36	42.69
C24	180°00'00"	2.00	6.28	INFINITE
C25	0°48'08"	5973.00	85.43	42.72
C26	170°24'	5844.00	104.74	52.37
C27	86°07'59"	25.00	37.58	23.37
C29	180°00'00"	5.00	15.71	INFINITE
C34	88°23'40"	25.00	38.57	24.31
C35	0°54'14"	5934.00	93.67	46.81
C36	190°00'18"	100.00	33.17	16.74
C37	173°45'54"	100.00	30.69	15.46
C38	123°36'	5844.00	144.55	72.28
C39	247°46'	5973.17	291.50	145.78
C40	247°46'	5986.92	292.18	146.12
C41	180°00'00"	6.88	21.60	INFINITE

CENTERLINE CURVE TABLE

CURVE	DELTA	RADIUS	LENGTH	TANGENT
C1	1°40'28"	5980.00	174.76	87.39
C2	5°02'34"	5980.00	526.31	263.33
C3	0°55'08"	5980.00	95.91	47.96

BASIS OF BEARINGS

NORTH 87°14'48" WEST BEING THE BEARING OF THE NORTH LINE OF THE SOUTHEAST QUARTER (SE 1/4) OF THE NORTHWEST QUARTER (NW 1/4) OF SECTION 21, TOWNSHIP 19 SOUTH, RANGE 60 EAST, M.D.M., CLARK COUNTY, NEVADA, AS SHOWN BY MAP THEREOF ON FILE IN FILE 119, PAGE 02 OF SURVEYS IN THE CLARK COUNTY RECORDER'S OFFICE, CLARK COUNTY, NEVADA.

BENCHMARK

CLV BENCHMARK: BLV90 21C4
 NAVD 88 ELEVATION: 747.010 (M)-2450.82 (F)
 CITY OF LAS VEGAS RIVET AND ROUND PLATE IN TOP OF CURB, NORTHEAST CORNER OF DEER SPRINGS WAY AND CIMARRON RD.

NOTES:
 NDOT ENCROACHMENT PERMIT REQUIRED FOR ALL WORK PERFORMED IN THE NEVADA STATE RIGHT-OF-WAY.

NOTE:
 ALL PUBLIC SEWERS SHOWN ON THIS PLAN WILL BE IN A PUBLIC SEWER EASEMENT AS SHOWN ON THE FINAL MAP

GRADING AND UTIL. NOTES

- ADD 2400 FT TO ALL PROPOSED ELEVATIONS.
- ALL PROPOSED SEWER TO BE PUBLIC.
- ALL PROPOSED WATER IS PUBLIC UP TO FMC& PRIVATE INSIDE SKY POINTE SUBDIVISION.
- DRAINAGE EASEMENTS TO BE PUBLIC BUT PRIVATELY MAINTAINED BY H.O.A.



Call before you Dig.
 1-800-227-2600
 UNDERGROUND SERVICE (USA)

G.C. WALLACE, INC.
 Engineers/Planners/Surveyors
 3001 FRIARWAY BLVD LAS VEGAS, NEVADA 89126
 (702) 867-2604 FAX (702) 867-2250
 G:\164-071\Map\propva\071-P-14.dwg

PULTE HOMES, INC.
 CENTENNIAL HILLS - SKY POINTE CONDOMINIUMS
 SKY POINTE DRIVE
 STA. 85+50 TO STA. 93+50

DRAWING
P-14
 CLV #107Y4848
 21 OF 38 SHTS