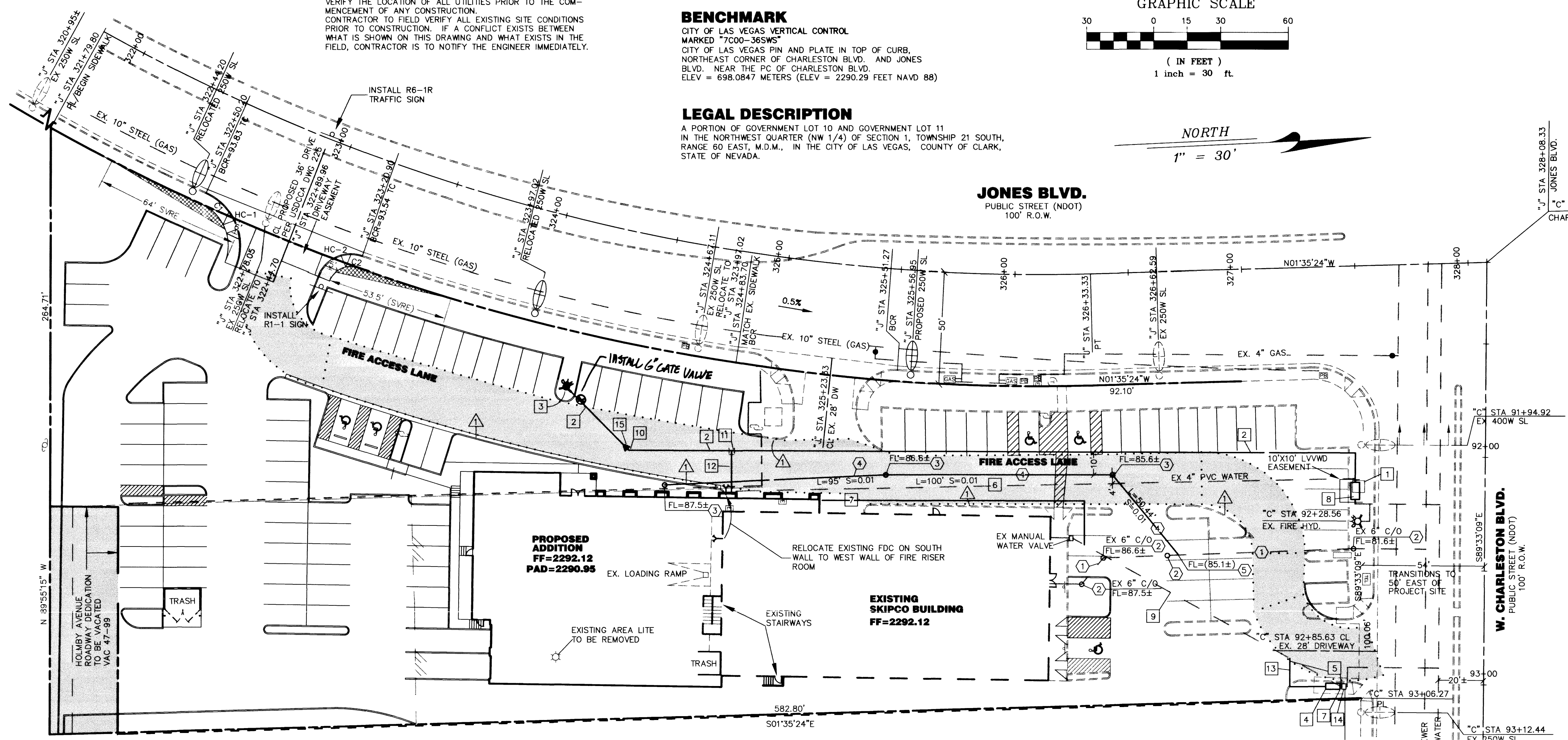
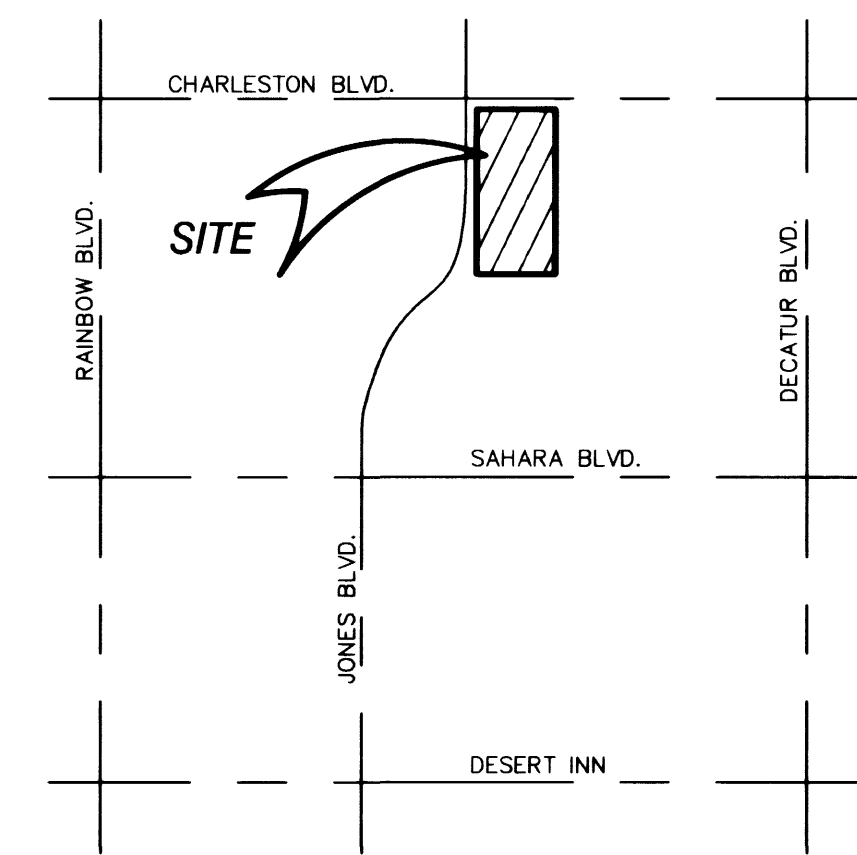
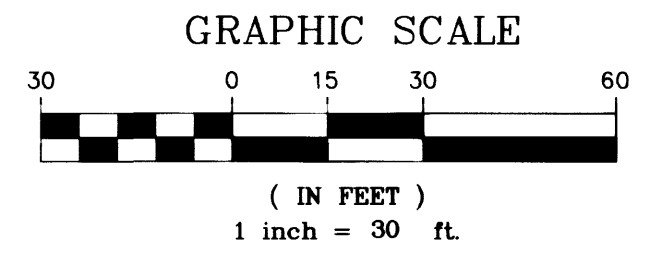


**NOTE:**  
 J.H.R. ASSOCIATES ASSUMES NO RESPONSIBILITY FOR EXISTING UTILITY LOCATIONS. THE UTILITIES SHOWN ON THIS DRAWING HAVE BEEN PLOTTED FROM THE BEST AVAILABLE INFORMATION. IT IS, HOWEVER, THE CONTRACTOR'S RESPONSIBILITY TO FIELD VERIFY THE LOCATION OF ALL UTILITIES PRIOR TO THE COMMENCEMENT OF ANY CONSTRUCTION.  
 CONTRACTOR TO FIELD VERIFY ALL EXISTING SITE CONDITIONS PRIOR TO CONSTRUCTION. IF A CONFLICT EXISTS BETWEEN WHAT IS SHOWN ON THIS DRAWING AND WHAT EXISTS IN THE FIELD, CONTRACTOR IS TO NOTIFY THE ENGINEER IMMEDIATELY.

**BASIS OF BEARING**  
 SOUTH 89°33'09" EAST BEING THE SOUTH LINE OF THE SOUTHWEST QUARTER (SW 1/4) OF SECTION 36, RANGE 60 EAST, M.D.B. AND M., AS SHOWN ON PARCEL MAP FILE 59, PAGE 37, CLARK COUNTY RECORDS, NEVADA.  
**BENCHMARK**  
 CITY OF LAS VEGAS VERTICAL CONTROL MARKED "7C00-365WS"  
 CITY OF LAS VEGAS PIN AND PLATE IN TOP OF CURB, NORTHEAST CORNER OF CHARLESTON BLVD. AND JONES BLVD. NEAR THE PC OF CHARLESTON BLVD.  
 ELEV = 696.0847 METERS (ELEV = 2290.29 FEET NAVD 88)

**LEGAL DESCRIPTION**  
 A PORTION OF GOVERNMENT LOT 10 AND GOVERNMENT LOT 11 IN THE NORTHWEST QUARTER (NW 1/4) OF SECTION 1, TOWNSHIP 21 SOUTH, RANGE 60 EAST, M.D.M., IN THE CITY OF LAS VEGAS, COUNTY OF CLARK, STATE OF NEVADA.



**LEGEND**

---	PROPERTY LINE
---	RIGHT OF WAY
---	CENTERLINE
---	EXISTING CURB
---	PROPOSED CURB
---	EDGE OF PAVEMENT
---	EXISTING BLOCK WALL
---	ASPHALTIC CONCRETE
---	BLOCK WALL
---	CURB & GUTTER
---	CENTERLINE
---	CLEANOUT
---	DRIVEWAY
---	EDGE OF PAVEMENT
---	EXISTING
---	FINISH GRADE
---	FIRE HYDRANT
---	FIRE LINE
---	GRADE BREAK
---	HIGH POINT
---	PROPERTY LINE
---	STREET LIGHT
---	MANHOLE
---	STATION
---	SIDEWALK
---	TOP BACK OF CURB
---	TOP OF CURB
---	TOP OF MANHOLE
---	VALLEY GUTTER

PROJECT NAME: **SKIPCO**  
 C-3  
 This project water plan complies with the Las Vegas Valley Water District's technical requirements. However, this water plan is **NOT APPROVED FOR CONSTRUCTION** at this time and this signature does not provide or imply a water commitment.  
 WVD: *[Signature]* DATE: 2-9-00

**CITY OF LAS VEGAS FIRE DEPARTMENT  
 FIRE FLOW CALCULATIONS (OFFICE BUILDING)**

FIRE FLOW REQUIREMENT IS: 2500 GALLONS PER MINUTE  
 BASED ON:  
 SQUARE FOOTAGE: 33,932 SQUARE FEET  
 LARGEST AREA BETWEEN 4-HOUR AREA SEPARATION WALLS: N/A SQUARE FEET  
 BUILDING HEIGHT: 24' FEET  
 NUMBER OF STORIES: TWO FLOOR  
 TYPE OF CONSTRUCTION: V-NR  
 OCCUPANCY: B-S2 WAREHOUSE/OFFICE  
 FULL AUTOMATIC FIRE SPRINKLER SYSTEM: YES

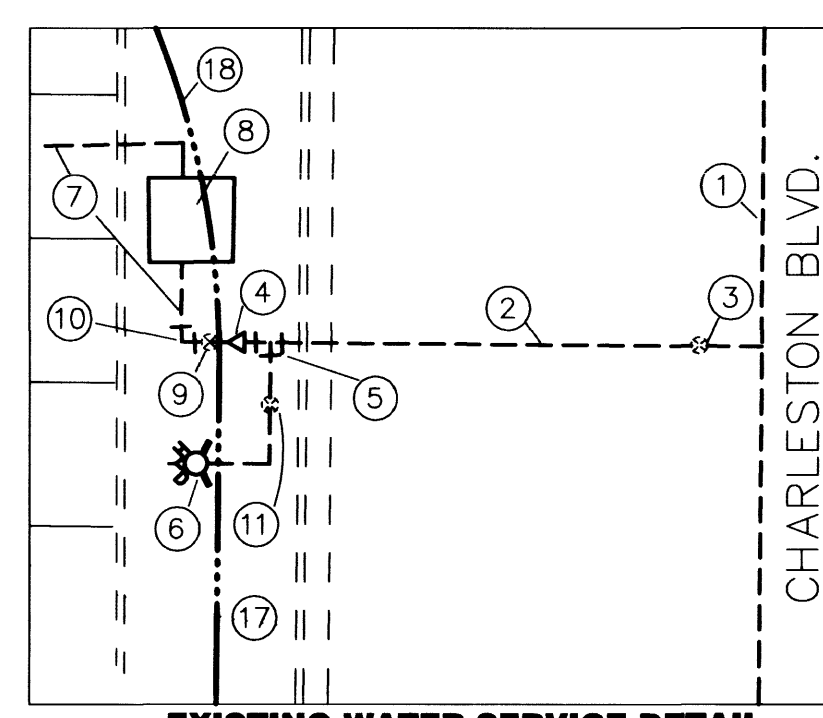
**1 - 8" DOUBLE CHECK DETECTOR ASSEMBLY**  
 THE 8" DOUBLE CHECK DETECTOR ASSEMBLY SHALL BE INSTALLED IN ACCORDANCE WITH THE UDACS PLATE 208. ANY BLOCK WALL OR OTHER FENCE MATERIAL SHALL BE DESIGNED AND CONSTRUCTED AROUND THE OUTSIDE OF THE EASEMENT, SO AS TO ALLOW DIRECT ACCESS FROM THE ADJACENT RIGHT-OF-WAY.

**REDUCED PRESSURE PRINCIPLE ASSEMBLY 1 - 1"**  
 APPROVED REDUCED PRESSURE PRINCIPLE ASSEMBLY(S) SHALL BE INSTALLED PER STANDARD PLATE NO. 11A. NO WATER SHALL BE TAKEN FROM A SERVICE REQUIRING BACKFLOW PREVENTION UNTIL THE REDUCED PRESSURE PRINCIPLE ASSEMBLY HAS BEEN SUCCESSFULLY TESTED BY THE LAS VEGAS VALLEY WATER DISTRICT.  
 ANY BLOCK WALL OR OTHER FENCE MATERIAL SHALL BE DESIGNED AND CONSTRUCTED AROUND THE OUTSIDE OF THE EASEMENT(S), SO AS TO ALLOW DIRECT ACCESS FROM THE ADJACENT RIGHT-OF-WAY.

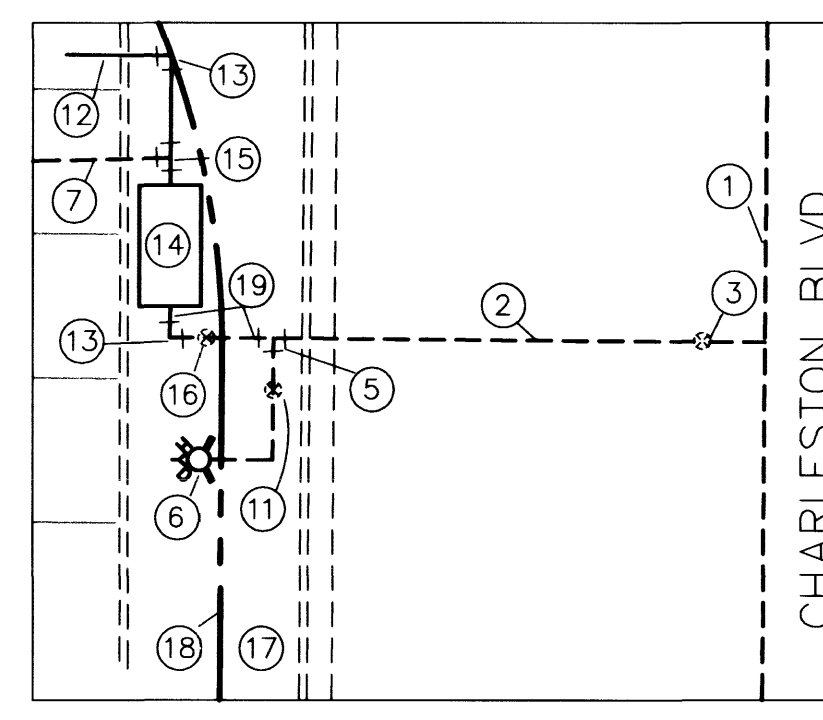
**APPROVAL**  
*[Signature]* DATE: 2-25-00  
 LAS VEGAS VALLEY WATER DISTRICT

**EXISTING/PROPOSED WATER SERVICE DETAILS - NOTES**

- EX 24" SCCP
- EX 8" PVC WATER
- EX 8" GATE VALVE
- EX 8"x4" REDUCER (TO BE REMOVED)
- EX 8"x8"x6" TEE
- EX FIRE HYDRANT
- EX 4" WATER
- EX 4" DCDA W/ VAULT (TO BE REMOVED)
- EX 4" GATE VALVE (TO BE REMOVED)
- EX 4" 90° BEND (TO BE REMOVED)
- EX 6" GATE VALVE
- PROPOSED 8" PVC WATER
- PROPOSED 8" 90° BEND W/ THRUST BLK
- PROPOSED 8" DCDA (FEBCO 876) W/ WATER SAFE CABINET MODEL NO. WS-8FM-OSY
- PROPOSED 8"x8"x4" TEE W/ THRUST BLK
- PROPOSED 8" GATE VALVE
- EX 5" SIDEWALK
- R/W LINE
- REMOVE THE 4" WATER LINE BETWEEN THE 8"x8"x6" TEE AND THE PROPOSED 8" DCDA. REPLACE WITH 8" PVC WATER

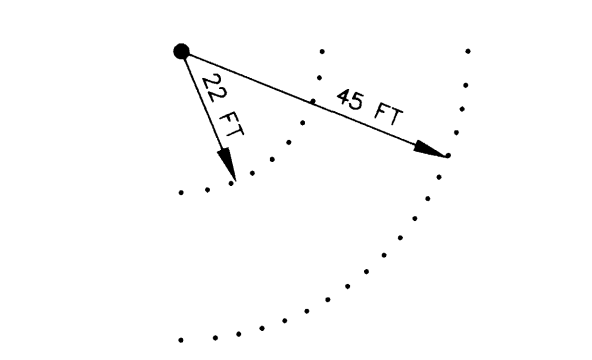


EXISTING WATER SERVICE DETAIL  
 ACCOUNT # 554582 METER # 213481  
 N.T.S.



PROPOSED WATER SERVICE DETAIL  
 N.T.S.

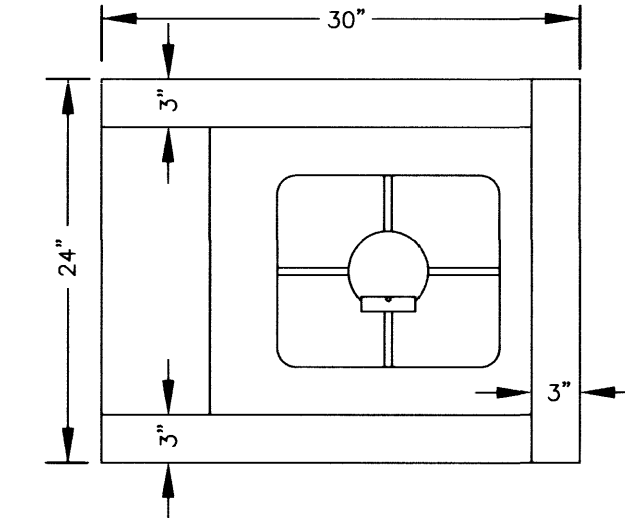
**CITY OF LAS VEGAS  
 FIRE ACCESS TURNING RADIUS**



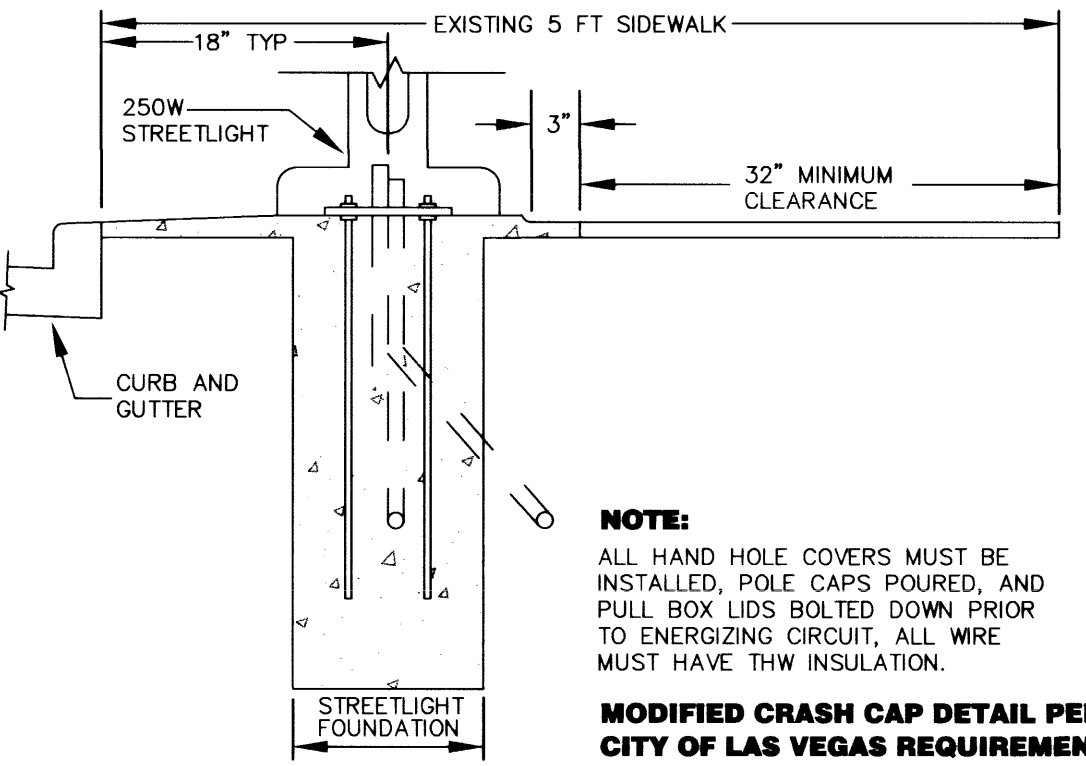
**CONSTRUCTION NOTES:**  
 CURBING TO BE PAINTED RED IN ACCORDANCE WITH CLARK COUNTY FIRE CODE ORDINANCE NO. 2289

**WATER QUANTITIES**

- (1) - 1" RPPA
- (1) - 8" DCDA



PLAN - MODIFIED CRASH CAP  
 NTS



MODIFIED CRASH CAP CROSS SECTION  
 NTS

**NOTE:**  
 ALL HAND HOLE COVERS MUST BE INSTALLED, POLE CAPS POURED, AND PULL BOX LIDS BOLTED DOWN PRIOR TO ENERGIZING CIRCUIT. ALL WIRE MUST HAVE THW INSULATION.

**MODIFIED CRASH CAP DETAIL PER THE CITY OF LAS VEGAS REQUIREMENTS.**

**WATER NOTES**

- EXISTING 4" DCDA TO BE REMOVED ACCOUNT #554582, METER # 213481
- PROPOSED 8" PVC WATER
- PROPOSED HYDRANT ASSEMBLY PER UDACS STD PLT 7
- PROPOSED 1" RPPA PER UDACS STD PLT 11A
- EX 1" WATER TO BE ABANDONED 25' LF ±
- EX 4" PVC WATER (FIRE LINE) TO BE ABANDONED
- INSTALL 1" COPPER WATER LINE
- PROPOSED 8" DCDA PER UDACS STD PLT 20B
- REMOVE AND REPLACE EX. 1" WTR SERVICE LINE AND VALVES WITH 1 1/2" WTR SERVICE LINE AND VALVES
- INSTALL 8" 45° ELBOW W/ THRUST BLK
- INSTALL 8"x8"x6" TEE
- INSTALL 6" FIRE LINE (CLASS C900)
- PROPOSED 1 1/2" COPPER WATER SERVICE LINE
- EXISTING 1" WATER METER
- 8"x6" REDUCER

**SEWER NOTES**

- EX 6" PVC SEWER
- EX 6" SEWER CLEAN OUT (C/O)
- PROPOSED 6" SEWER CLEAN OUT (C/O)
- PROVIDE ALL CLEANOUTS IN PAVED AREAS WITH VALVE BOXES, TRAFFIC BEARING LIDS, AND CONCRETE COLLARS.
- PROPOSED 6" PVC SEWER LINE
- CONNECT TO EXISTING SEWER

**SEWER CONTRIBUTION**

USE CODE	500
FIXTURE COUNT	62 (BOTH EXISTING AND FUTURE)
E.R.U. = 62 X 0.45	27.9
AVERAGE DAILY FLOW =	6,975 GPD OR 0.0070 MGD
	0.0108 CFS
PEAK FLOW (X3.2) =	22,320 GPD OR 0.0223 MGD
	0.0345 CFS

AVOID OVERHEAD POWER LINE CONTACT. IT'S COSTLY.  
**Call before you OVERHEAD**  
 1-702-593-6111  
 NEVADA POWER ENVIRONMENT AND SAFETY SERVICES DEPARTMENT

AVOID CUTTING UNDERGROUND UTILITY LINES. IT'S COSTLY.  
**Call before you Dig**  
 1-800-227-2000  
 (48 hrs. Advance Notice Required)

PROJECT: SKIPCO BUILDING EXPANSION  
 SHEET: 3 OF 4 SHEETS  
 SCALE: HORIZ: 1" = 30' VERT: N/A  
 DRAWN BY: B-3-99  
 DESIGNED BY:  
 CHECKED BY:  
 PROJECT NO: 124-99-368  
 DATE: 2/9/00  
 REESE P. JARRELL  
 LAS VEGAS VALLEY WATER DISTRICT  
 6025 WEST CHARLESTON BLVD., LAS VEGAS, NEVADA  
 PH: (702) 878-9771 FAX: (702) 822-1905  
 JHR Associates Ltd.  
 4880 W. UNIVERSITY, SUITE B-2 PH (702) 876-2341  
 LAS VEGAS, NEVADA 89103 FAX (702) 876-8395

20894 21070