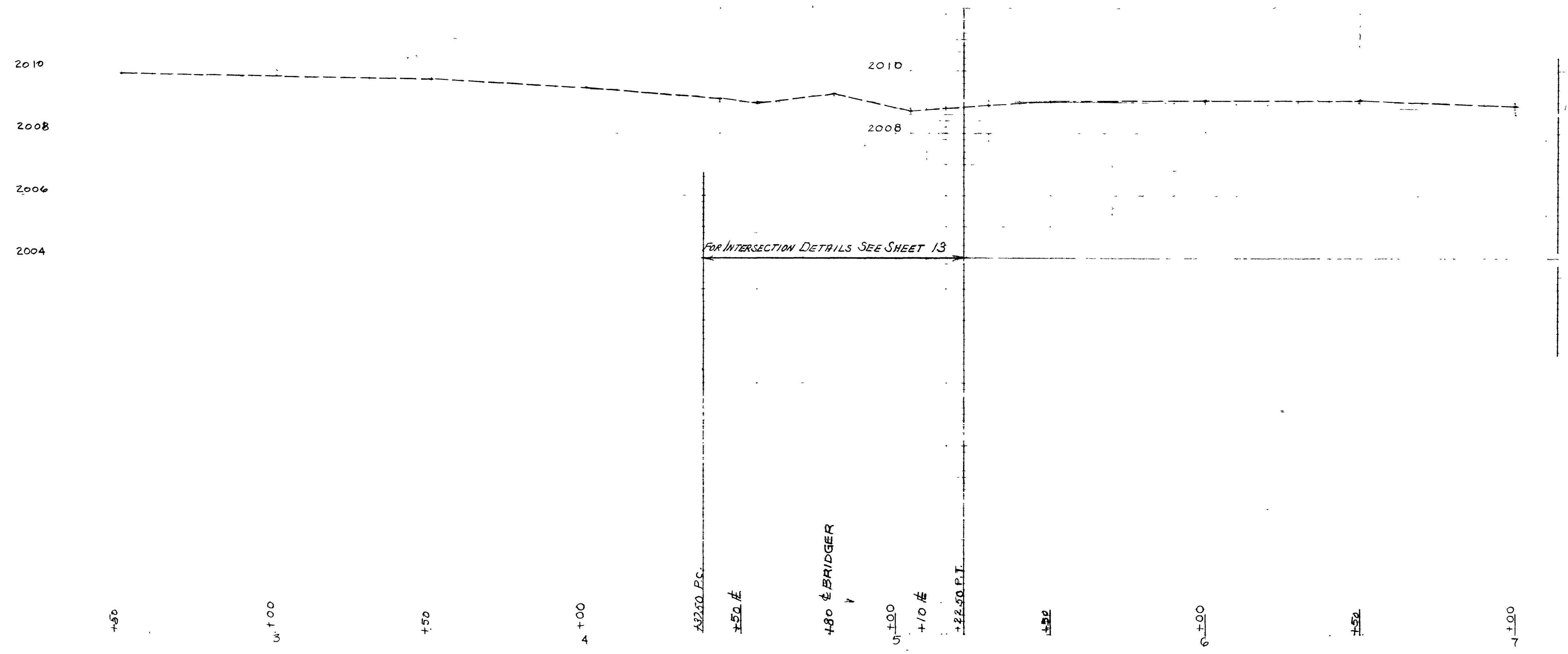


SIXTH STREET - BRIDGER TO STEWART



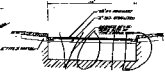
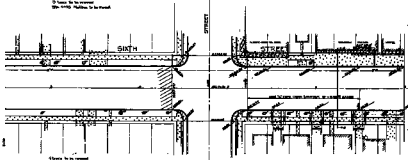
S.A.D. 100-45

CITY OF LAS VEGAS NEVADA
ENGINEERING DEPT.

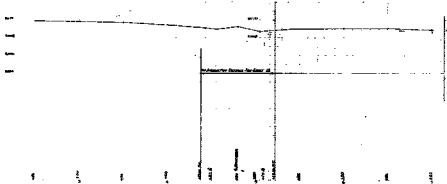
SIXTH STREET-BRIDGER TO STEWART
STA 2+50 TO 7+00

DES. <i>B. Patterson</i>	DATE 1-12-61	SC. OR 1" = 20'
DR. PATTERSON	12-29-60	SC. OR 1" = 2'
CKD.		F. BK. NO. 88-45; BK. 5
APPROVED BY CITY ENGR. <i>B.P. Patterson</i>		P.J. O. NO. W 101
		DRAWING NO. 107-16

2' base to be removed
 2 1/2" 40# rebar to be placed



2' base to be removed
 2 1/2" 40# rebar to be placed



S&B 100-02
 CITY OF LAS VEGAS NEVADA
 ENGINEERING DEPT.

SIXTH STREET-DANGER TO STEWART
 STA 2+50 TO 7+00

DATE: 10/1/54	BY: J.P.L.	CHECKED: J.P.L.	SCALE: AS SHOWN
PROJECT NO.:	DATE:	BY:	SCALE: