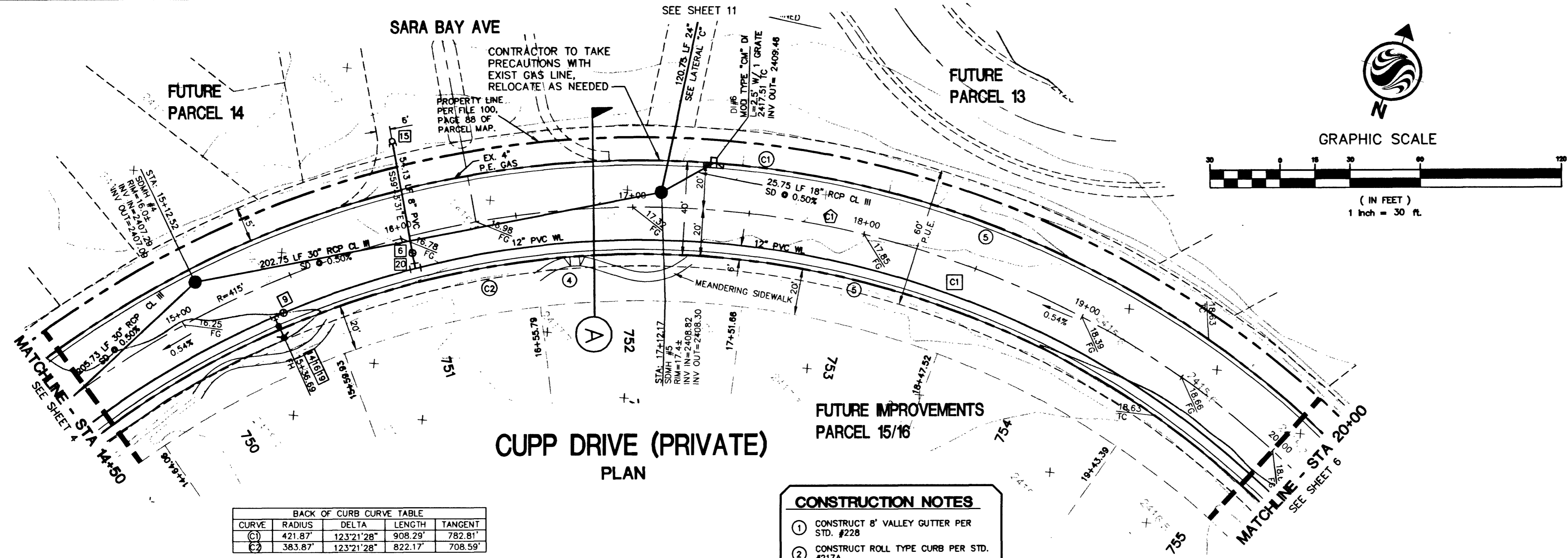


W:\Active\58147051\Drawings\Utilities\Cupp Drive\Improvements\Cupp Drive Plan-Profile.dwg rmartinez Mon, 28 Apr 2003 - 8:38am



**CUPP DRIVE (PRIVATE)  
PLAN**

BACK OF CURB CURVE TABLE				
CURVE	RADIUS	DELTA	LENGTH	TANGENT
(C1)	421.87'	123°21'28"	908.29'	782.81'
(C2)	383.87'	123°21'28"	822.17'	708.59'

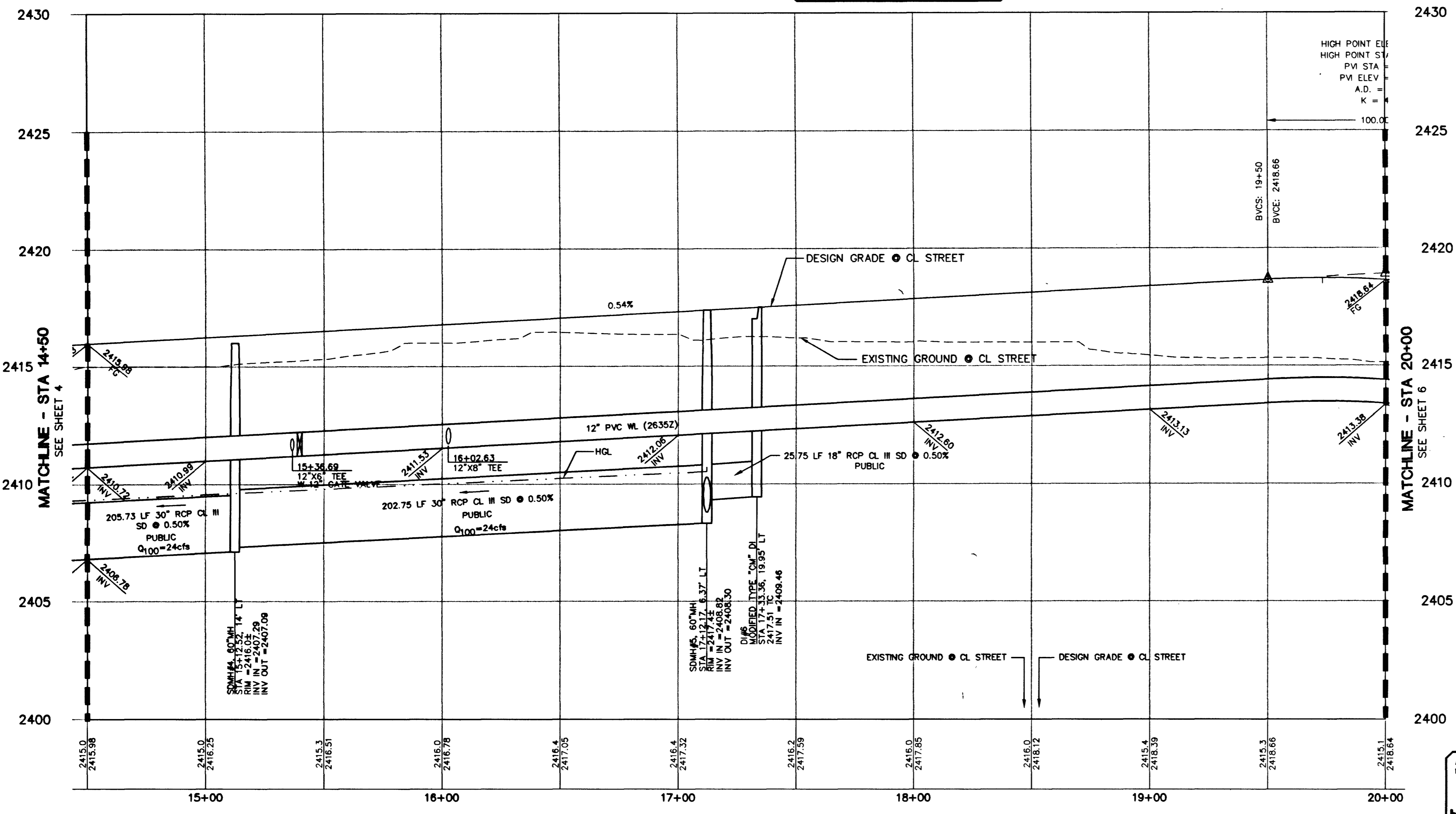
  

CENTERLINE CURVE TABLE				
CURVE	RADIUS	DELTA	LENGTH	TANGENT
(C1)	401.87'	123°21'28"	865.23'	745.70'

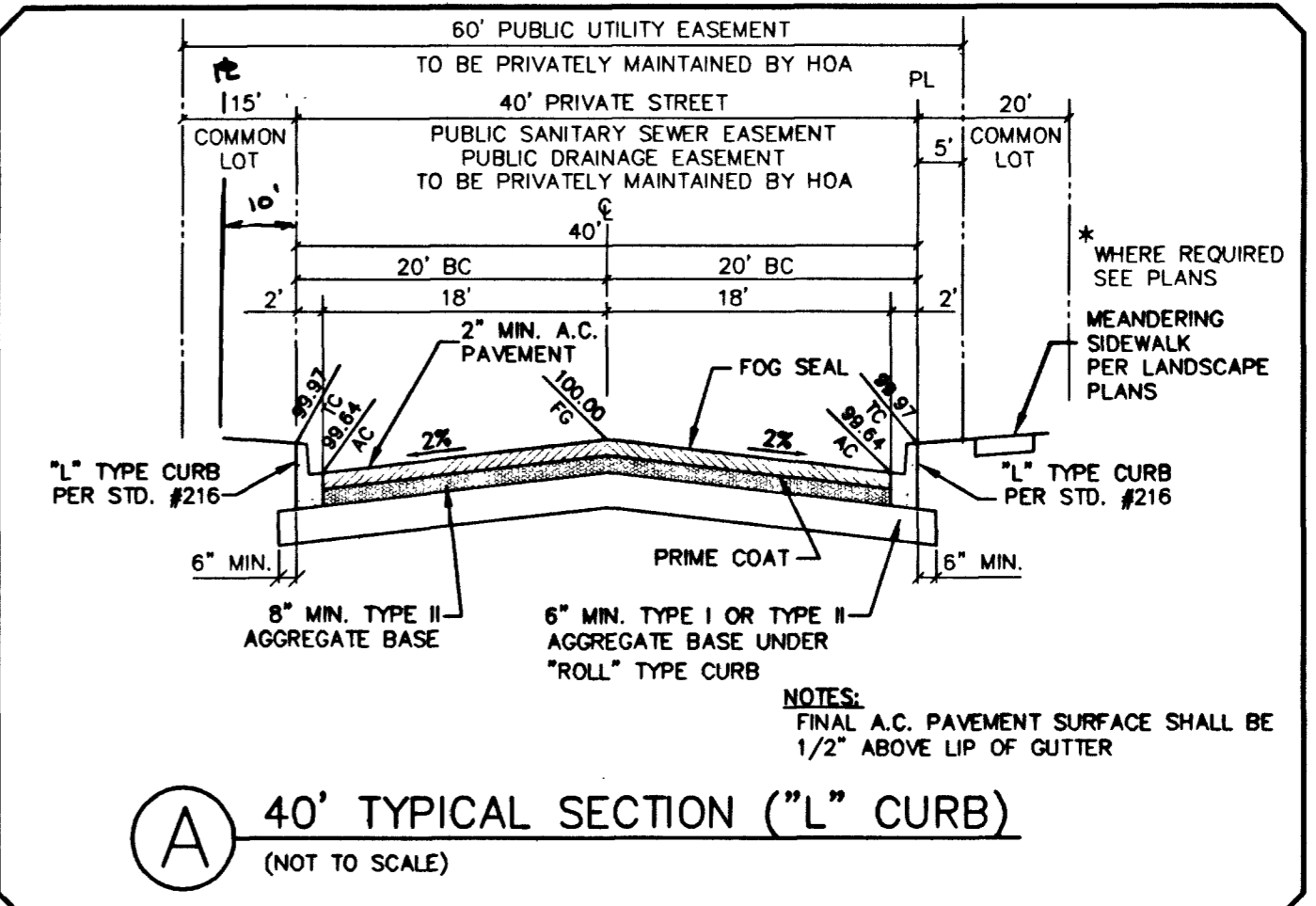
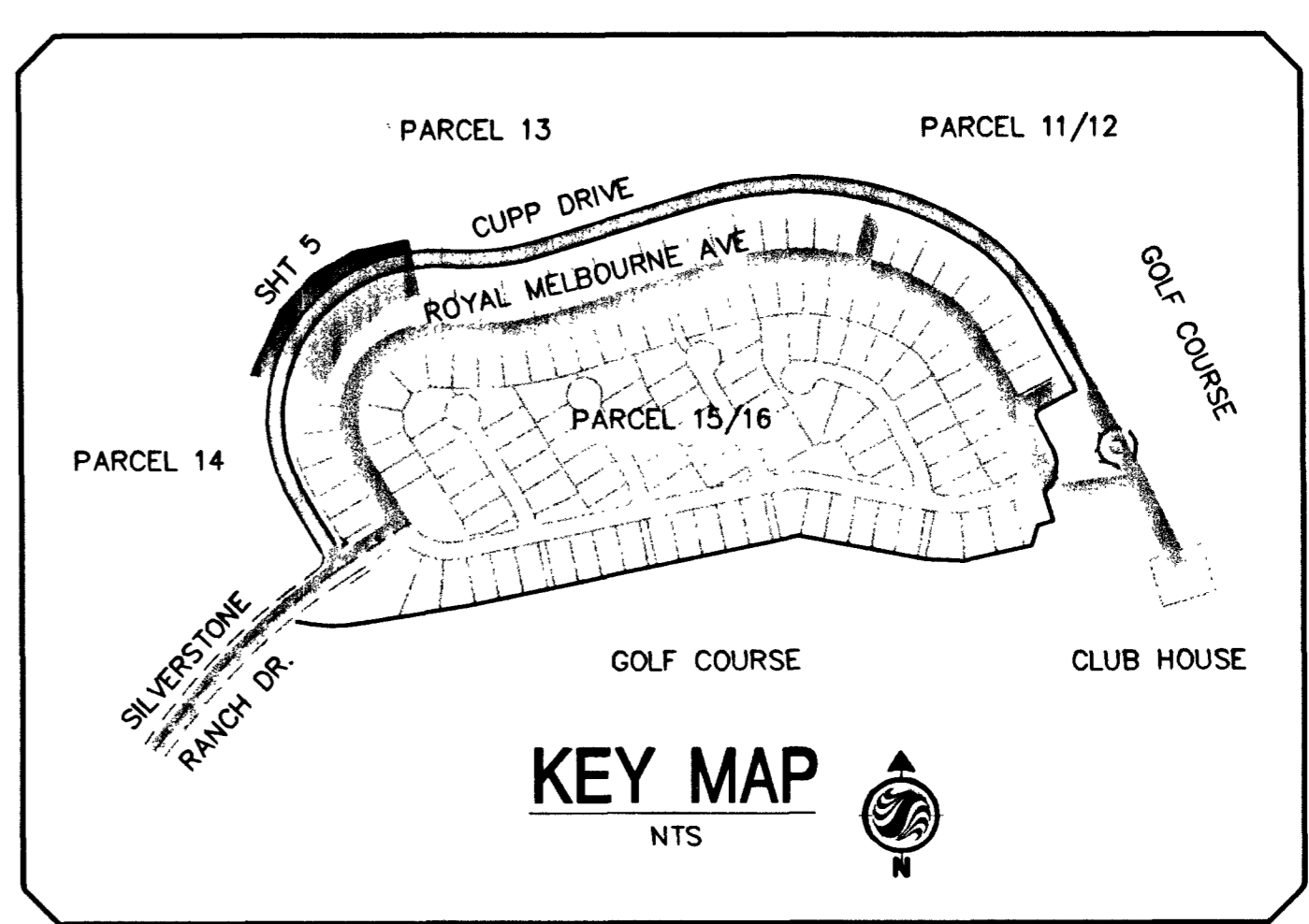
  

12" WATERLINE TABLE				
CURVE	RADIUS	DELTA	LENGTH	TANGENT
(C1)	387.87'	123°21'28"	835.08'	719.72'

- CONSTRUCTION NOTES**
- CONSTRUCT 8" VALLEY GUTTER PER STD. #228
  - CONSTRUCT ROLL TYPE CURB PER STD. #217A
  - CONSTRUCT 4" SIDEWALK PER STD. #234 & #217A
  - CONSTRUCT HANDICAP RAMP PER STD. #235 (SEE TRANSITION TABLE)
  - CONSTRUCT "L" TYPE CURB & GUTTER PER STD. #216
  - CONSTRUCT CURB TRANSITION, ROLL TYPE CURB TO "L" TYPE CURB



**CUPP DRIVE (PRIVATE)  
PROFILE** SCALE: HORIZ. 1" = 30'  
VERT. 1" = 3'



- WATER FITTINGS LEGEND:**
- 8"x8" TEE
  - 8"x6" TEE
  - 8" 11 1/4" BEND
  - 8" 22 1/2" BEND
  - 8" 45° BEND
  - 8" GATE VALVE
  - 8" 90° BEND
  - 12"x8" REDUCER
  - 12" GATE VALVE
  - 12"x12" TEE
  - 12" 45° BEND
  - 16"x12" TEE
  - 16"x12" REDUCER
  - FIRE HYDRANT ASSY. PER UDACS PLATE 7
  - 2" BLOW-OFF ASSEMBLY W/CAP PER UDACS PLATE 4
  - 6" GATE VALVE
  - 1 1/2" WATER METER PER UDACS PLATE 1D W/ 1 1/2" RPPA PER UDACS PLATE 11A
  - 12"x6" TEE
  - 12"x8" TEE
  - 12" 90° BEND

**DISCLAIMER NOTE**  
EXISTING UTILITY LOCATIONS SHOWN HEREIN ARE APPROXIMATE ONLY. IT SHALL BE THE CONTRACTOR'S RESPONSIBILITY TO DETERMINE THE EXACT VERTICAL AND HORIZONTAL LOCATION OF ALL EXISTING UNDERGROUND UTILITIES PRIOR TO COMMENCING CONSTRUCTION. NO REPRESENTATION IS MADE THAT ALL EXISTING UTILITIES ARE SHOWN HEREON. THE ENGINEER ASSUMES NO RESPONSIBILITY FOR UTILITIES NOT SHOWN OR UTILITIES NOT SHOWN IN THEIR PROPER LOCATION.  
CALL BEFORE YOU DIG: 1-800-227-2600.

**BENCHMARK**  
CITY OF LAS VEGAS BENCHMARK # 1LV90 9NES  
BLM BRASS CAP AT BUFFALO AND IRON MOUNTAIN.  
ELEVATION = 744.7290 METERS (NAVD 88)  
ELEVATION = 2443.33 U.S. FEET (NAVD 88)  
THE DATA SHOWN HEREON IS BASED UPON THE ABOVE BENCHMARK PREVIOUSLY PUBLISHED WITH THE NGVD 29 ELEVATION SHOWN BELOW. TO CONVERT NGVD 29 DATUM TO NAVD 88 DATUM ADD 2.31 FEET.  
(ELEVATION USED FOR THIS PROJECT)  
ELEVATION = 2441.02 U.S. FEET (NGVD29)

**BASIS OF BEARING**  
SOUTH 00°37'59" EAST, BEARING OF THE EAST LINE OF THE NORTHEAST (N1/4) OF SECTION 10, TOWNSHIP 19 SOUTH, RANGE 60 EAST, M.D.M. AS SHOWN BY A MAP ON FILE IN CLARK COUNTY, NEVADA RECORDER'S OFFICE AS FILE 70, PAGE 15 OF RECORD OF SURVEYS.

Avoid hitting overhead power lines. It's costly.  
**Call before you Overhead**  
1-702-593-6111

Avoid cutting underground utility lines. It's costly.  
**Call before you Dig.**  
1-800-227-2600

**APPROVALS**  
LAS VEGAS VALLEY WATER DISTRICT  
DATE: 5/28/03

DATE:	4/28/2003
PM:	S.A.
DRAWN BY:	RTM
DESIGNED BY:	B.E.
CHECKED BY:	B.E.
ADA CHECKED:	
JOB NO.:	88147064
SCALE:	1" = 30'

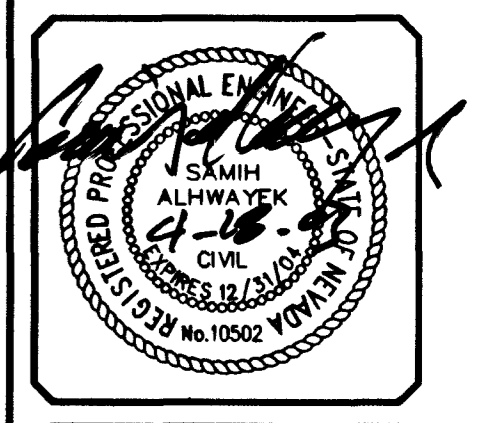
The Contractor shall verify and be responsible for all dimensions. NO NOT scale the drawing. any errors or omissions shall be reported to Stattec without delay. The Contractor shall be responsible for obtaining all necessary permits. Property of Stattec. Reproduction or use for any purpose other than that authorized by Stattec is prohibited.  
Copyright Reserved

Stattec Consulting Inc.  
7251 W. Charleston Blvd.  
Las Vegas NV U.S.A.  
89117  
Tel: 702.256.0115  
Fax: 702.256.4956  
www.stattec.com

**Stattec**

**Pulte Homes**  
1835 VILLAGE CENTER DR. SUITE 250  
LAS VEGAS, NV 89164  
(702) 256-7900

PULTE HOMES  
SILVERSTONE RANCH - PARCEL 15/16  
CUPP DR/OFFSITE WATER, SEWER & STORM DRAIN  
14+50 TO 20+00  
PLAN AND PROFILE



SHEET **5** OF 34  
C.L.V. DWG. 107Y-474-0

52187-1-53029