



SEE PLAN & PROFILE SHT. 10 & 25 FOR OFF-SITE IMPROVEMENTS

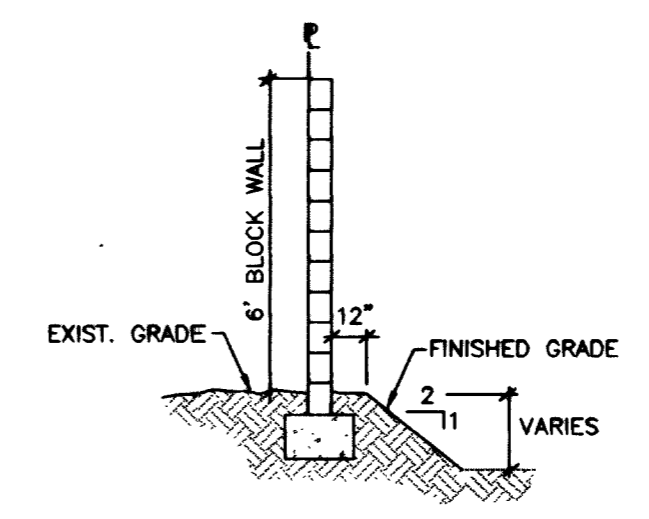
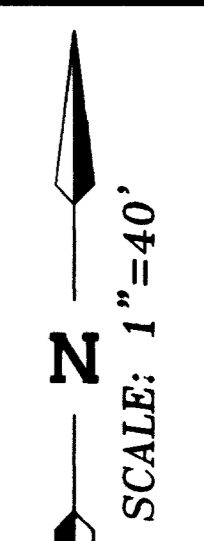
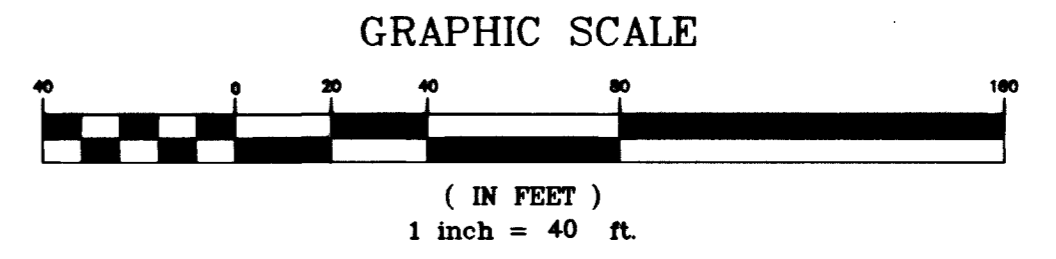
Call before you Dig.
1-800-227-2600
Call before you Overhead
1-702-583-6111
NEADA POWER ENVIRONMENT & SAFETY SERVICES DEPARTMENT

BASIS OF BEARINGS

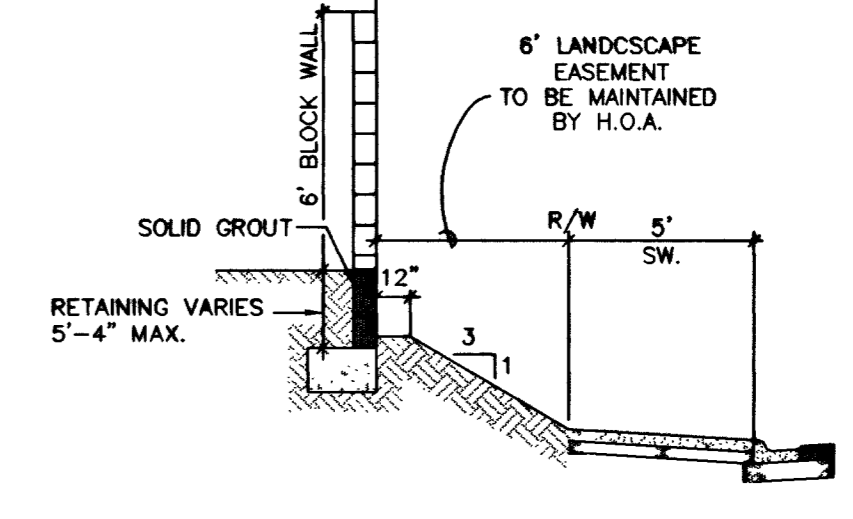
THE BASIS OF BEARING FOR THIS SURVEY IS THE SOUTH LINE OF THE SOUTHEAST QUARTER OF THE NORTHWEST QUARTER OF SECTION 22, TOWNSHIP 19 SOUTH, RANGE 60 EAST, M.D.M., CITY OF LAS VEGAS, CLARK COUNTY NEVADA, AS SOUTH 84°59'10" EAST, AS SHOWN ON FILE 85, PAGE 38 OF SURVEYS IN THE OFFICE OF THE CLARK COUNTY, NEVADA.
REFERENCE SURVEY: RECORD OF SURVEY FILE 85, PAGE 38 O.R. CITY OF LAS VEGAS ANNEXATION ORD. # 4003

BENCHMARK

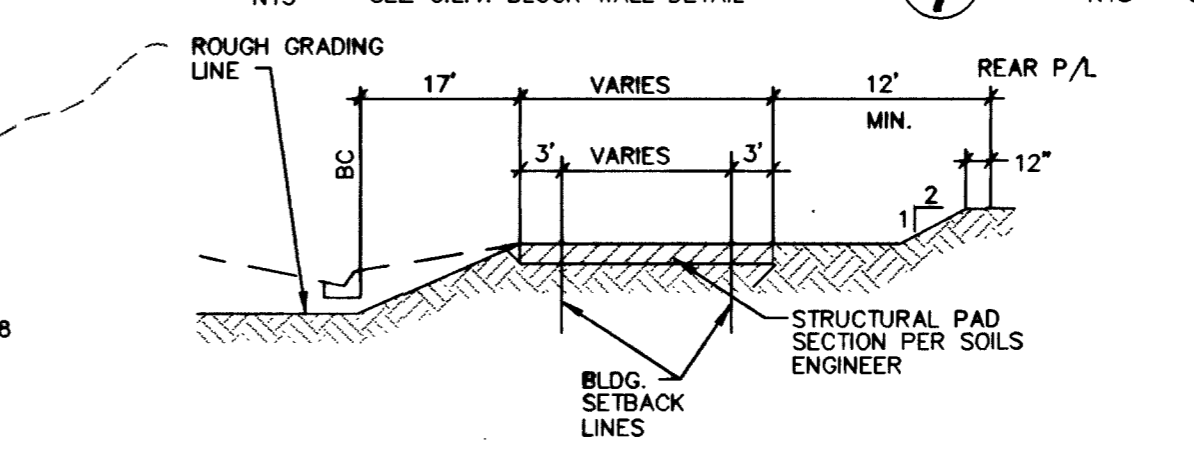
CLV BM # 48 11/9022W6 RIVET & PLATE ON POWER-TRANS. PAD, 7535 W. DEER SPRINGS ROAD, 500' EAST OF BUFFALO DRIVE. ELEV.= 727.8646 (METERS) ELEV.= 2388.0020 (U.S. SURVEY FEET) NAVD 88 DATUM



BLOCK WALL DETAIL ①



RETAINING WALL DETAIL ②



TYPICAL GRADING SECTION ③

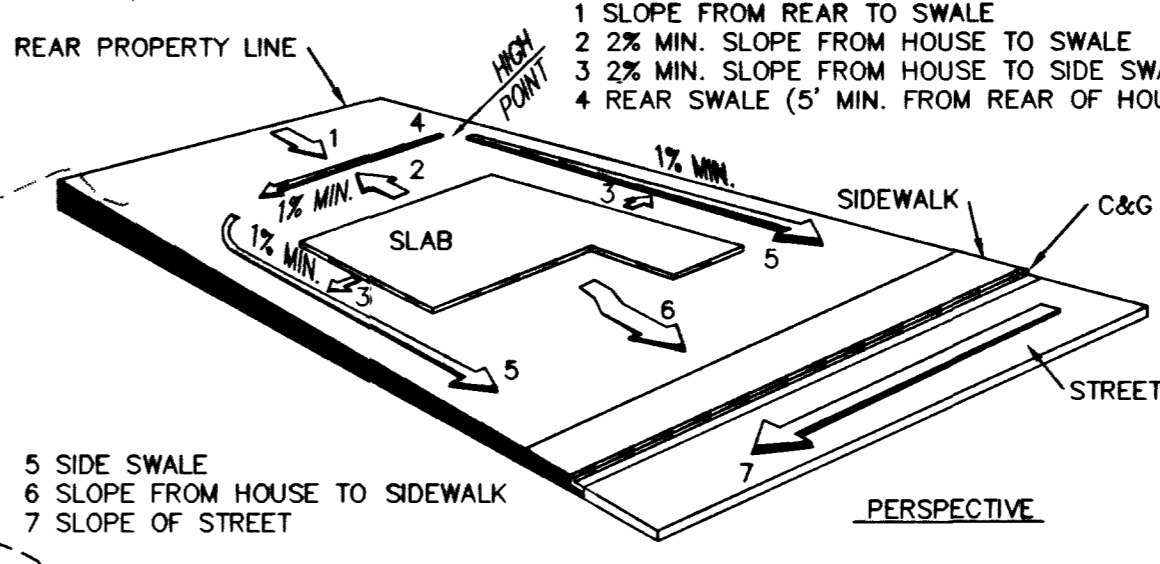
S.V.R.E. DETAIL
S.V.R.E. CURVE TABLE

CURVE	RADIUS	LENGTH	TANGENT	DELTA
C1	20.00'	31.42'	20.00'	90°00'00"
C2	20.00'	32.10'	20.70'	91°57'58"
C3	15.00'	23.14'	14.58'	88°23'05"
C4	15.00'	23.56'	15.00'	90°00'00"

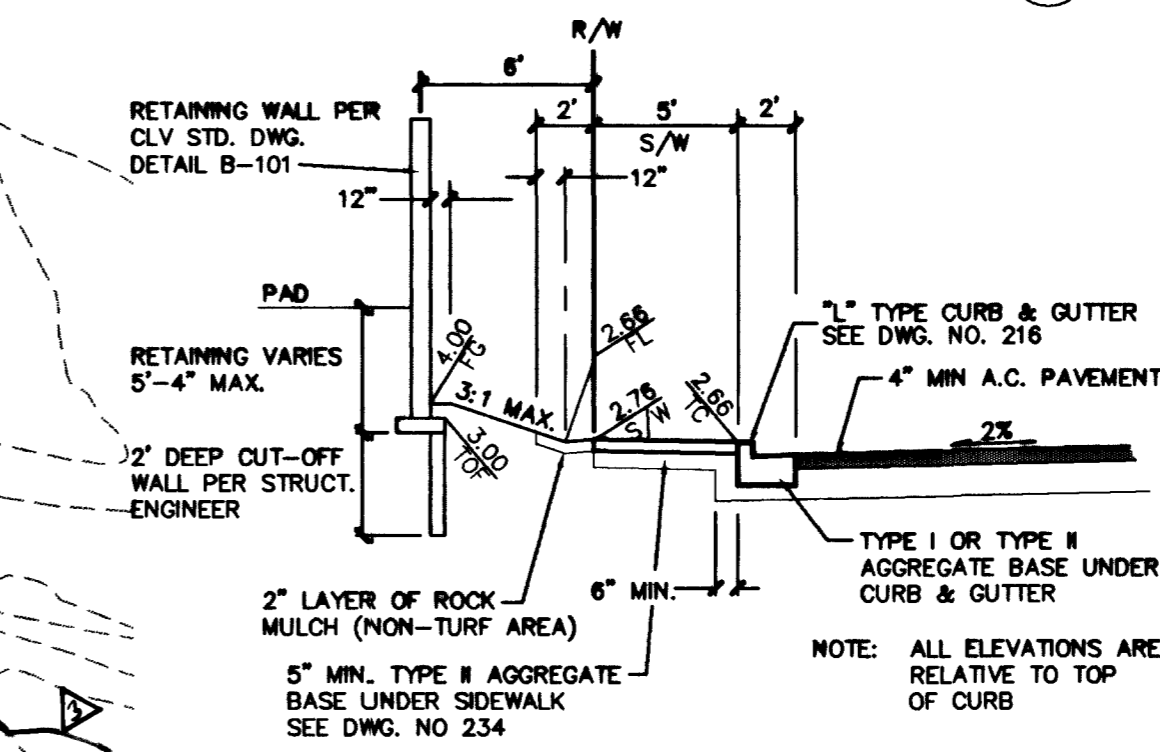
NOTE: NO VIEW OBSTRUCTION OVER 30" ABOVE TOP OF CURB ALLOWED IN SHADED AREA

S.V.R.E. LINE TABLE

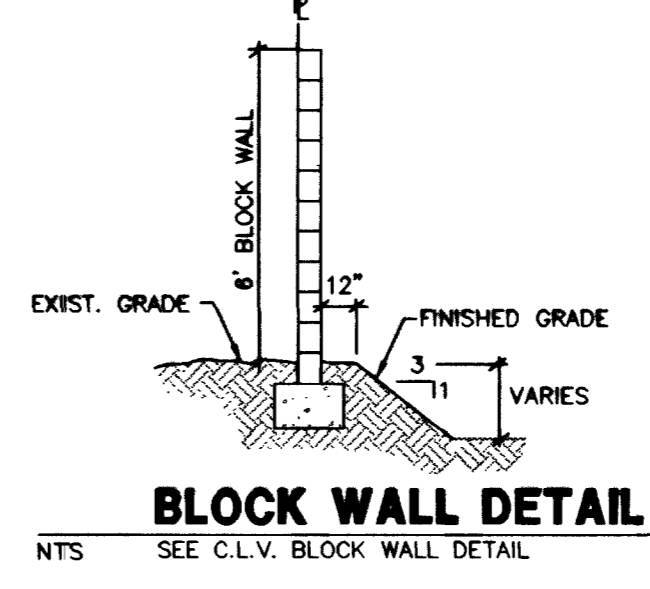
LINE	DIRECTION	DISTANCE
L1	N47°09'57"E	22.46'
L2	N05°20'43"E	74.23'
L3	N42°50'03"W	26.11'
L4	N05°25'40"W	11.64'
L5	N48°08'58"E	23.10'
L6	N05°20'59"E	73.35'
L7	N41°40'33"W	9.52'
L8	N87°40'51"W	45.77'
L9	N03°24'38"W	45.77'
L10	S02°09'57"W	70.00'
L11	S02°09'57"W	10.00'
L12	S02°09'57"W	69.30'
L13	N02°31'00"E	33.42'
L14	N85°52'05"W	41.42'
L15	S42°29'00"E	15.79'
L16	S03°25'49"E	37.04'
L17	N02°31'00"E	33.00'
L18	S47°31'00"W	15.53'
L19	S07°37'07"W	45.20'
L20	N02°31'00"E	41.00'



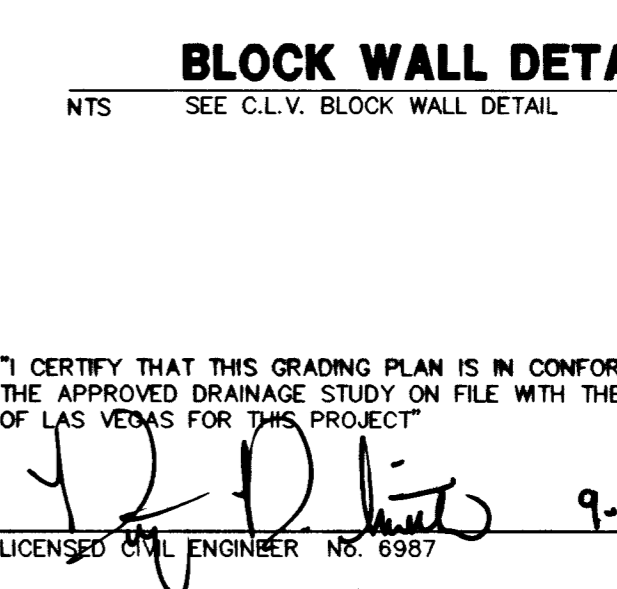
F.H.A. TYPE 'A' DRAINAGE ④



CUT-OFF WALL SECTION ⑤



BLOCK WALL DETAIL ⑥



BLOCK WALL DETAIL ⑦

SEE PLAN & PROFILE SHT. 11 FOR OFF-SITE IMPROVEMENTS

SEE PLAN & PROFILE SHT. 30 FOR OFF-SITE IMPROVEMENTS

THE DEVELOPERS OF NEVADA
7448 WEST SAHARA AVENUE
LAS VEGAS, NEVADA 89117
(702) 222-1410

DESIGNING FOR THE FUTURE
PLANNERS • CONSULTING ENGINEERS • SURVEYORS
7548 WEST SAHARA AVENUE • LAS VEGAS, NEVADA 89117 • (702) 248-6415

PROJECT NO.: 985-0520
SCALE: 1" = 40' HOR.
DATE: 9-22-98

SHEET 01 OF 31 SHEETS
DRAWING NO. 1074-4573-1

DESIGNED BY: TBSK/ZSR/AG
CHECKED BY: GREG RIVERO
PROJECT NO.: 985-0520

DATE: 9-22-98