

CLARK COUNTY ENCROACHMENT PERMIT REQUIRED FOR ALL WORK WITHIN AND ADJACENT TO CLARK COUNTY BELTWAY RIGHT-OF-WAY. CONTACT CHRIS LUND AT 455-4621 FOR DETAILS.

NOTE: CONSTRUCT CONCRETE COLLAR PER USDOCCA STD DWG NO. 329 IF NO SIDEWALK

- CONSTRUCTION NOTES**
- 11-GAUGE STREET ASSEMBLY WITH 250-WATT HPS LUMINAIRE WITH 15-FOOT MAST ARM AND GE M-400 LIGHTING FIXTURE AT BACK OF SIDEWALK PER USDOCCA STD DWG NO. 320 IN ACCORDANCE WITH SECTION 623 OF THE CLARK COUNTY STAND SPECIFICATIONS
 - 200 AMP SERVICE PEDESTAL
 - 2" CONDUIT, 1-#8 (STREET LIGHT)
 - NO. 3 1/2 PULL BOX (STREET LIGHT) (USDOCCA STD DWG NO. 326)
 - CONNECT TO EXISTING
 - STUB AND CAP 5 FEET BEYOND CONSTRUCTION
 - 2"C. 2-#4, 1-#8 GND. THW (STREET LIGHT)
 - (2) 2" C., 2-#4, 1-#8 GND THW (EACH CONDUIT) (STREET LIGHT)
 - 4" CONDUIT, 1-#8 (INTERCONNECT)
 - 2-3", & 2-2" CONDUITS, 1-#8 (SIGNAL)
 - 4-3", & 2-2" CONDUITS, 1-#8 (SIGNAL)
 - NO. 7 PULLBOX (SIGNAL) (USDOCCA STD DWG NO. 404.13D)
 - TYPE 200 SPLICE VAULT (INTERCONNECT) (USDOCCA STD DWG NO. 404.133)
 - P-30 SPLICE VAULT (INTERCONNECT) (USDOCCA STD DWG NO. 404.132)
 - 4" CONDUIT, 2-#4/0, 1-#4/0 GND THW (ELECTRICAL SERVICE)
 - 1-1/4" CONDUIT, 1-#8 (STREET LIGHT)
 - EXISTING TO REMAIN IN PLACE
- NOTE:
UNLESS OTHERWISE NOTED, ALL CONDUIT SHALL HAVE 1-#8 LOCATOR WIRE INSTALLED.

STREET LIGHT CIRCUIT CAPACITY VERIFICATION

SERVICE POINT NO. (SP-1)
SERVICE PEDESTAL (200 AMP) ON THE EAST SIDE OF DECATUR BLVD, SOUTH OF ROME BLVD.

CIRCUIT "SP-1A" STREET LIGHTING

CIRCUIT CAPACITY	= 60 AMPS
MAXIMUM ALLOWABLE DRAW (80) X 60 AMPS	=48 AMPS
EXISTING CIRCUIT LOAD	=0.0 AMPS
PROPOSED LUMINAIRE LOAD TO CIRCUIT	
SIX (6) OF 250 WATTS @ 240V, 1.25 AMPS EA	= 7.5 AMPS
TOTAL PROPOSED LOAD	= 7.5 AMPS
EXISTING PLUS PROPOSED LOAD	= 7.5 AMPS
REMAINING AVAILABLE LOAD	= 40.5 AMPS

CIRCUIT "SP-1B" STREET LIGHTING

CIRCUIT CAPACITY	= 60 AMPS
MAXIMUM ALLOWABLE DRAW (80) X 60 AMPS	=48 AMPS
EXISTING CIRCUIT LOAD	=0.0 AMPS
PROPOSED LUMINAIRE LOAD TO CIRCUIT	
ONE (1) OF 250 WATTS @ 240V, 1.25 AMPS EA	= 1.25 AMPS
TOTAL PROPOSED LOAD	= 1.25 AMPS
EXISTING PLUS PROPOSED LOAD	= 1.25 AMPS
REMAINING AVAILABLE LOAD	= 46.75 AMPS

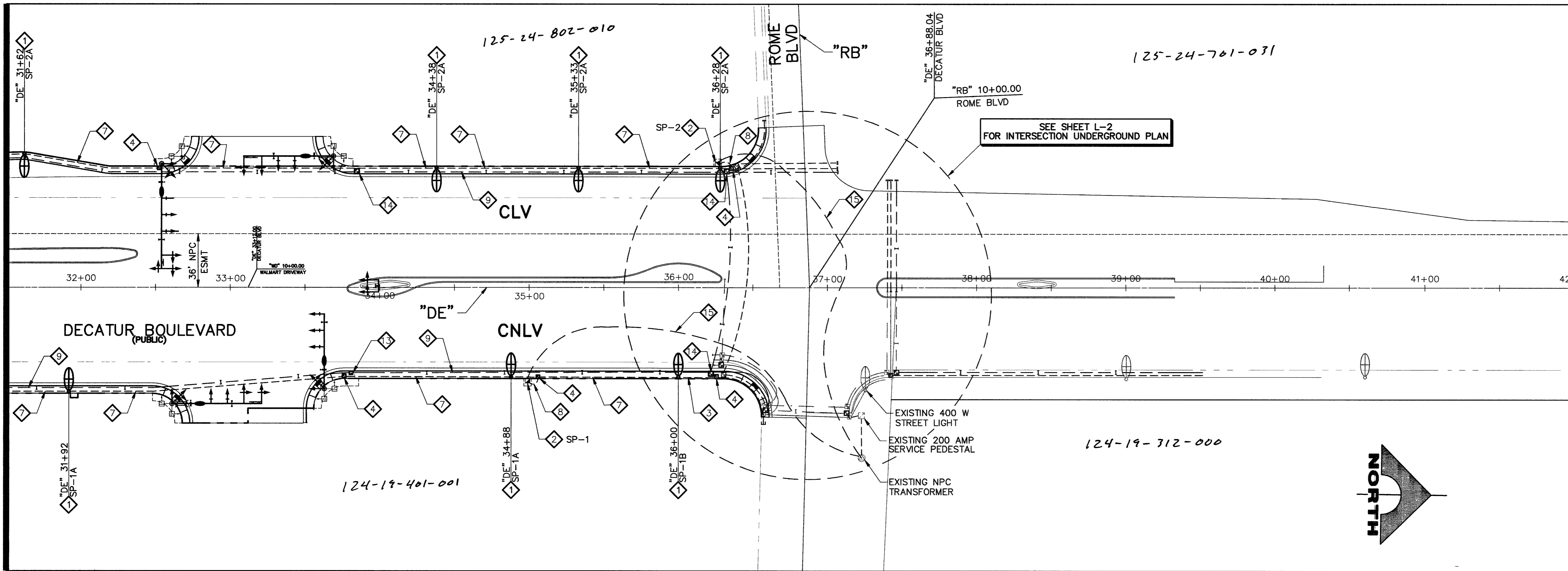
CIRCUIT "SP-1C" INTERSECTION LIGHTING

CIRCUIT CAPACITY	= 40 AMPS
MAXIMUM ALLOWABLE DRAW (80) X 40 AMPS	=32 AMPS
EXISTING CIRCUIT LOAD	=0.0 AMPS
PROPOSED LUMINAIRE LOAD TO CIRCUIT	
FOUR (4) 400 WATTS @ 120V, 4.00 AMPS EA	= 16.00 AMPS
TOTAL PROPOSED LOAD	= 16.00 AMPS
EXISTING PLUS PROPOSED LOAD	= 16.00 AMPS
REMAINING AVAILABLE LOAD	= 16.00 AMPS

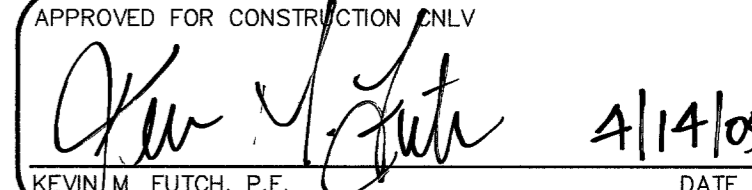
SERVICE POINT NO. (SP-2)
SERVICE PEDESTAL (200 AMP) ON THE SOUTHWEST CORNER OF DECATUR BLVD/ROME BLVD

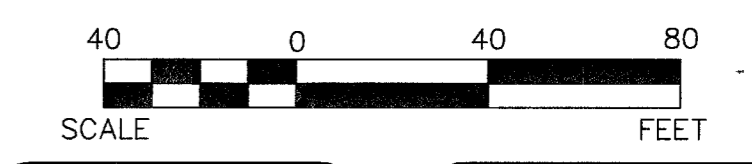
CIRCUIT "SP-2A"

CIRCUIT CAPACITY	= 60 AMPS
MAXIMUM ALLOWABLE DRAW (80) X 60 AMPS	=48 AMPS
EXISTING CIRCUIT LOAD	=0.0 AMPS
PROPOSED LUMINAIRE LOAD TO CIRCUIT	
EIGHT (8) OF 250 WATTS @ 240V, 1.25 AMPS EA	= 10.0 AMPS
TOTAL PROPOSED LOAD	= 10.0 AMPS
EXISTING PLUS PROPOSED LOAD	= 10.0 AMPS
REMAINING AVAILABLE LOAD	= 38.00 AMPS



SEE SHEET L-2 FOR INTERSECTION UNDERGROUND PLAN

APPROVED FOR CONSTRUCTION ONLY

 KEVIN M. FUTCH, P.E. DATE: 4/14/05



Call before you Dig.
 1-800-227-2600
 UNDERGROUND SERVICE (USA)

CALL BEFORE YOU DIG OVERHEAD

STATE OF NEVADA
 PROFESSIONAL ENGINEER
 MATTHEW D. WELLS
 No. 15790
 Exp. 12/31/2008
 DATE: 4/14/05

DESIGN: JMM
 DRAWN: DPH
 CHECK: TAM
 ISSUE DATE: XX
 ISSUE EDITOR:
 PLOT DATE: 03-28-05
 PLOT TIME: 12:41:35

79139 83138

107Y4861-05

16 OF 19 SHEETS

ONLY # 19166

SHADOW MOUNTAIN MARKETPLACE, L.L.C.
 DECATUR BOULEVARD
 STREET LIGHTING PLAN

G.C. WALLACE, INC.
 Engineers/Planners/Surveyors
 1585 SOUTH RAINBOW BLVD./LAS VEGAS, NEVADA 89146
 TELEPHONE: (702) 804-2000 • FAX: (702) 804-2289
 F:\3388-2765\Work\Imp\05\05-01.dwg

DATE: 4/14/05
 % COMPLETE