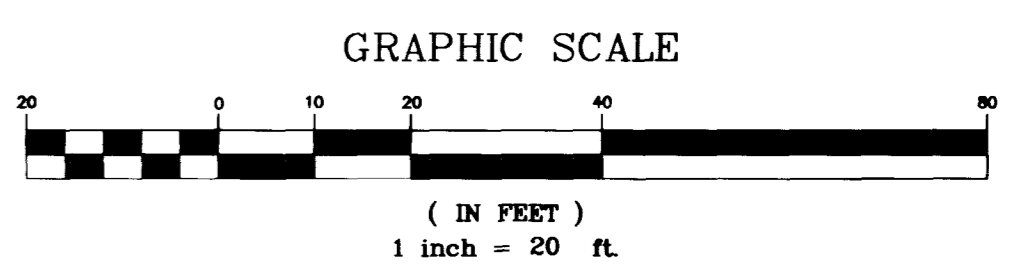


LAS VEGAS VALLEY WATER DISTRICT NOTES LVVWD PROJECT #23793

- NO WORK SHALL BEGIN UNTIL THE WATER PLANS HAVE BEEN RELEASED FOR CONSTRUCTION BY THE LVVWD. FOLLOWING WATER PLAN APPROVAL, FORTY-EIGHT (48) HOUR NOTICE SHALL BE GIVEN TO THE LVVWD COMMUNICATION SUPPORT CENTER (258-7171) PRIOR TO THE START OF CONSTRUCTION. NOTICE MUST BE GIVEN BY 2:00 P.M. THE BUSINESS DAY PRIOR TO A LVVWD INSPECTION. WHEN REQUESTING INSPECTIONS, PLEASE REFER TO THE PROJECT NUMBER IDENTIFIED ABOVE.
- ALL WORK SHALL CONFORM TO LVVWD STANDARD PLATES, DRAWINGS, AND SPECIFICATIONS, AND THE UNIFORM DESIGN & CONSTRUCTION STANDARDS FOR WATER DISTRIBUTION SYSTEMS (UDACS), LATEST EDITION.
- ALL WORK, EXCEPT AS MODIFIED BY THESE PLANS OR BY NOTE 2, SHALL BE DONE IN ACCORDANCE WITH THE MOST CURRENT DRAFT OR EDITION OF THE UNIFORM STANDARD SPECIFICATIONS FOR PUBLIC WORKS CONSTRUCTION OFF-SITE IMPROVEMENT, CLARK COUNTY AREA.
- A SINGLE PIPE MATERIAL SHALL BE USED THROUGHOUT THE PROJECT UNLESS OTHERWISE APPROVED BY THE LVVWD.
- ALL SERVICE LATERALS TWO INCHES (2") IN DIAMETER AND SMALLER SHALL BE COPPER TUBING WITH LVVWD APPROVED SERVICE SADDLES.
- ALL WATER METER BOXES SHALL BE LOCATED OUTSIDE OF DRIVEWAY AREAS.
- ALL VALVES SHALL BE LOCATED OUTSIDE OF DRIVEWAYS, GUTTERS, CURBS AND ALLEY GUTTERS.
- THE FOLLOWING REQUIREMENTS MUST BE MET IN THE EVENT A WATER LINE AND A SANITARY SEWER OR STORM SEWER LINE CROSS:
 - A. A MINIMUM EIGHTEEN INCH (18") VERTICAL SEPARATION (OUTSIDE TO OUTSIDE) MUST BE MAINTAINED WHEN THE WATER LINE IS INSTALLED OVER THE SANITARY OR STORM SEWER LINE. IF THE VERTICAL SEPARATION CANNOT BE MAINTAINED OR THE WATER LINE MUST BE PLACED UNDER THE SANITARY OR STORM SEWER LINE, THE SANITARY OR STORM SEWER LINE MUST BE CONSTRUCTED WITH ONE OF THE FOLLOWING OR, AS SHOWN ON THESE PLANS:
 - A. POTABLE WATER SUPPLY QUALITY MATERIAL.
 - B. ENCASEMENT, WITH FOUR INCH (4") CONCRETE (MINIMUM)
 - C. SLEEVING WITH POTABLE WATER SUPPLY QUALITY PIPE.
- WARNING TAPE SHALL BE REQUIRED OVER ALL MAINS, ALL SIX INCH (6") DIAMETER AND LARGER SERVICE LATERALS, AND ANY SERVICE LATERAL NOT INSTALLED PERPENDICULAR TO THE MAIN IN ACCORDANCE WITH STANDARD PLATE NO. 27.
- ALL WATER FACILITIES SHALL BE FILLED, DISINFECTED, PRESSURE TESTED, FLUSHED, FILLED AND AN ACCEPTABLE WATER SAMPLE OBTAINED PRIOR TO CONNECTION TO THE LVVWD'S DISTRIBUTION SYSTEM.
- THE CONTRACTOR MUST OBTAIN ALL METERS TWO INCHES (2") AND SMALLER FROM LVVWD CENTRAL STORES. TELEPHONE 258-3152 FORTY-EIGHT (48) HOURS PRIOR TO PICKUP.
- CONSTRUCTION MAY INTERRUPT SERVICE, WITH LVVWD APPROVAL AND PROPER NOTIFICATION, BETWEEN THE HOURS OF 10 PM AND 6 AM, SUNDAY THROUGH THURSDAY. CIRCUMSTANCES THAT MAY REQUIRE TEMPORARY SERVICE FEED MUST HAVE PRIOR LVVWD APPROVAL.
- ALL WATER FACILITY CONSTRUCTION MATERIALS USED MUST BE AS LISTED ON THE LVVWD'S PRE-APPROVED MATERIALS AND MANUFACTURERS LISTING FOR NEW FACILITIES, LATEST REVISION, OR SPECIFICALLY APPROVED ON THESE PLANS.



CITY OF LAS VEGAS BENCHMARK
2LV01 22S66 ELEV.= 580.6177 METERS (1904.91 FT.) NAVD 88
RIVET AND PLATE IN TOP OF CURB, NORTHEAST RETURN OF OWENS AVE. AND MAIN ST.

- WATER CONSTRUCTION NOTES**
- INSTALL 2" SERVICE SADDLE PER UDACS PLATE #1D.
 - INSTALL 2" METER PER UDACS PLATE #1D.
 - INSTALL 2" RPPA PER UDACS PLATE #11A.
 - INSTALL 6" "N" PATTERN DCDA PER UDACS PLATE #20B.
 - INSTALL 16"x6" WET TAPPING SLEEVE & 6" TAPPING VALVE PER UDACS SECTION 3.13. THRUST BLOCKS PER UDACS PLATE #5.
 - FOR CONTINUATION, REFER TO MECHANICAL DRAWINGS.
 - INSTALL FIRE HYDRANT & APPURTENANCES PER UDACS PLATE #7
 - INSTALL 6"x6" MECHANICAL JOINT TAPPING SLEEVE & TAPPING GATE VALVE WITH THRUST BLOCKS PER UDACS PLATE #5.
 - SAW CUT AND REPLACE PER CCASD #504
 - INSTALL 2" 90° ELBOW
 - INSTALL 3"x2" REDUCER

WATER TABLE

PIPE NO.	SIZE (IN)	TYPE OF PIPE	LF
1	2	SCH 40	1
2	2	SCH 40	8
3	3	SCH 40	6
4	6	C900	6
5	6	C900	11
6	6	C900	28
7	6	C900	4
8	3	SCH 40	4
9	6	C900	8

SEWER TABLE

PIPE	DIA (IN)	LF	SLOPE (%)
1	8	14	9.5%
2	8	13	9.5%

NOTE: ALL SEWER TO BE SDR 35 PVC
NOTE: CONTRACTOR TO VERIFY SEWER MAIN INVERT IN FIELD & NOTIFY ENGINEER OF ANY DISCREPANCIES.

FIREFLOW DATA

FIRE FLOW REQUIREMENT IS : 2000 gpm
AT 20 PSI RESIDUAL PRESSURE.
BASED ON:
SQUARE FOOTAGE : 35,500 SQUARE FEET
STATIC PRESSURE : 71.9
TYPE OF CONSTRUCTION : III-N
FULL AUTOMATIC FIRE SPRINKLER SYSTEM : YES
REVIEWED BY : *[Signature]*
DATE : 1/1/10

Call before you Overhead
1-702-593-6111
NEVADA POWER ENVIRONMENT AND SAFETY SERVICES DEPARTMENT

Call before you Dig
1-800-227-2600

REDUCED PRESSURE PRINCIPLE ASSEMBLY (1) 2"

APPROVED REDUCED PRESSURE PRINCIPLE ASSEMBLY(S) SHALL BE INSTALLED PER THE UDACS PLATE NO. 11A. NO WATER SHALL BE TAKEN FROM A SERVICE REQUIRING BACKFLOW PREVENTION UNTIL THE REDUCED PRESSURE PRINCIPLE ASSEMBLY HAS BEEN SUCCESSFULLY TESTED BY THE LVVWD.

ANY BLOCK OR OTHER FENCE MATERIAL SHALL BE DESIGNED AND CONSTRUCTED AROUND THE OUTSIDE OF THE EASEMENT(S) TO ALLOW THE DISTRICT DIRECT ACCESS FROM THE ADJACENT RIGHT-OF-WAY.

ABANDONMENT OF EXIST. SERVICES - 2" AND SMALLER
(1) 1" ACCT # 20891, METER # 236028

THE CONTRACTOR SHALL NOTIFY THE INSPECTION DIVISION AT THE LVVWD (702-258-3227) 48 HOURS PRIOR TO THE REQUESTED REMOVAL TIME TO ALLOW THE DISTRICT TO TAKE THE FINAL METER READING OF THE METER. AFTER THE FINAL READING, THE CONTRACTOR MAY THEN BEGIN REMOVAL PROCEDURES FOR THE AFFECTED SERVICE AS FOLLOWS:

EXISTING SERVICE LATERALS THAT ARE TO BE ABANDONED FROM THE EXISTING WATER MAIN, SHALL HAVE THE CORPORATION STOP TURNED OFF AT THE MAIN, A MINIMUM OF 12" OF THE LATERAL CUT OUT NEAR THE CORPORATION STOP AND A BRASS CAP INSTALLED ON THE CORPORATION STOP. IF THE CORPORATION STOP IS DAMAGED BEYOND REPAIR OR PULLED FROM THE EXISTING WATER MAIN, THE MAIN SHALL BE REPAIRED AT THE CONTRACTOR'S EXPENSE, IN A MANNER APPROVED BY THE LVVWD. IF THE CORPORATION STOP IS NOT WATER TIGHT, THE CONTRACTOR SHALL NOTIFY LVVWD COMMUNICATION SUPPORT CENTER (702-258-7171) FOR FURTHER DIRECTION.

THE CONTRACTOR SHALL REMOVE THE EXISTING SERVICE METER BOX AND APPURTENANCES. FILL AND GRADE ANY AND ALL RESULTING VOIDS AND REPLACE OR RESTORE TO ORIGINAL CONDITIONS OR BETTER. ALL LANDSCAPING, IRRIGATION SYSTEMS, CONCRETE, SIDEWALKS, ASPHALT, OR ANY OTHER ITEMS DAMAGED OR REMOVED DURING THE REMOVAL OF THE EXISTING SERVICE METER BOX.

STATIC PRESSURE
THIS PROPERTY MAY HAVE STATIC WATER PRESSURE IN EXCESS OF 80 PSI. THE UNIFORM PLUMBING CODE REQUIRES THAT INDIVIDUAL, ON-SITE (PRIVATE), PRESSURE REDUCING VALVES BE INSTALLED WHENEVER THE PRESSURE EXCEEDS 80 PSI. PRVS ARE THE DEVELOPER'S RESPONSIBILITY AND WILL NOT BE INSPECTED OR INCLUDED IN THE ACCEPTANCE OF LVVWD FACILITIES.

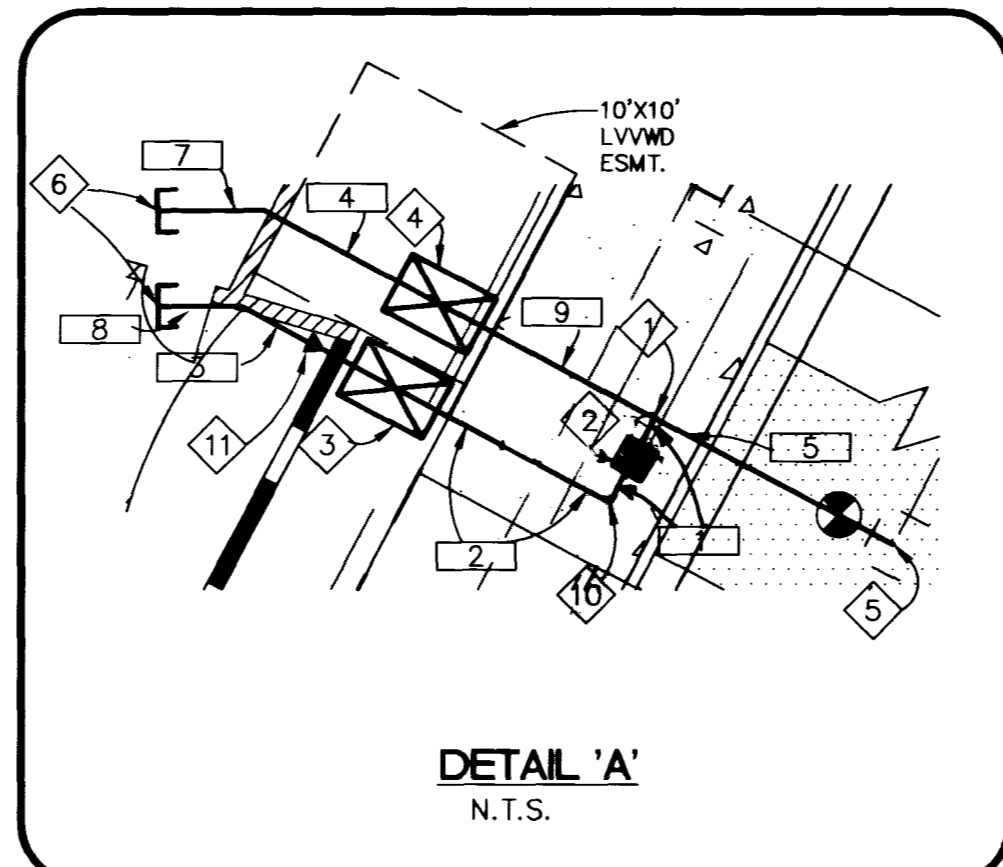
FIRE HYDRANT INSTALLATION
FIRE HYDRANT(S) TO BE INSTALLED IN ACCORDANCE WITH THE UDACS STANDARD PLATE NO. 7

NEVADA DEPARTMENT OF TRANSPORTATION

AN APPROVED NDOT OCCUPANCY PERMIT SHALL BE OBTAINED THROUGH THE DISTRICT PRIOR TO ANY CONSTRUCTION WITHIN THE NDOT RIGHT-OF-WAY.

QUANTITIES

	PUBLIC	PRIVATE
2" COPPER WL	7 LF	
6" PVC WL	47 LF	3 LF
2" METER	1 EA	10 LF
2" RPPA	1 EA	10 LF
6" "N" PATTERN DCDA	1 EA	
6"x6" MJ WET TAPPING SLEEVE & GATE VALVE	1 EA	
2" SERVICE SADDLE	1 EA	
FIRE HYDRANT ASSEMBLY	1 EA	
2" 90° ELBOW	1 EA	
16"x6" MJ WET TAPPING SLEEVE & GATE VALVE	1 EA	
3" PVC WL		1 EA
3"x2" REDUCER		1 EA



- TRAFFIC CONSTRUCTION NOTES**
- MODIFY EXIST STREET LIGHT FOUNDATION PER CCASD #325
 - INSTALL #3 1/2 PULL BOX.
 - INTERCEPT EXISTING STREETLIGHT CIRCUIT, INSTALL #3 1/2 PULLBOX AND REWUP CONDUCTORS.
 - INSTALL 1 1/4" CONDUIT W/ 2- #4 AND 1- #8 THW WIRE
 - INSTALL 1 1/4" CONDUIT W/ PULL STRING
 - EXIST. 1 1/4" CONDUIT
- NOTE: ALL WORK ASSOCIATED WITH THIS/THESE STREETLIGHTS SHALL BE DONE UNDER THE DIRECT SUPERVISION OF THE CITY OF LAS VEGAS ELECTRICAL SHOP. ANY QUESTIONS CALL 229-6331

NEVADA DEPARTMENT OF TRANSPORTATION

ALL NDOT STATIONS ON MAIN STREET ARE IN METERS.

SEWER CONSTRUCTION NOTES

(1) CONSTRUCT SEWER BACK WATER VALVE PER DCSWCS #SD-29

SEWAGE CONTRIBUTION

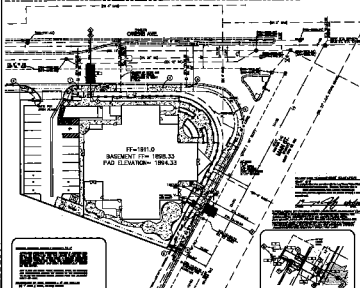
AVERAGE FLOW: = 250 GPD/ERU
= 650 GPD
= 0.45 GPM

PEAK FLOW: = (0.45 GPM)(3.4)
= 1.53 GPM

NOTE: CONTRACTOR TO VERIFY SEWER MAIN INVERT IN FIELD.

THE ON-SITE WATER LINES AND APPURTENANCES ARE PRIVATE FACILITIES NOT TO BE OPERATED OR MAINTAINED BY THE CITY OF NORTH LAS VEGAS

SHEET 12-99
 DRAWN BY: STAFF
 DESIGNED BY: CK
 CHECKED BY: KS
 PROJECT NO: 30-2293B
 SCALE: 1" = 20' HOR. VERT.
 TITLE: UTILITY PLAN FOR SHADE TREE SHELTER
 CIVIL ENGINEER: KRISTINA L. SWALLOW
 12/3/09
 SHEET C4
 04 OF 07 SHEETS
 DRAWING NO. 2938
 REV. DATE BY REVISION



LAW VALLEY WATER DISTRICT WATER LIVING PROJECT 86200

1. ALL CONSTRUCTION SHALL BE IN ACCORDANCE WITH THE CITY OF LAW VALLEY WATER DISTRICT WATER LIVING PROJECT 86200 SPECIFICATIONS AND THE CITY OF LAW VALLEY WATER DISTRICT WATER LIVING PROJECT 86200 SPECIFICATIONS.
2. ALL CONSTRUCTION SHALL BE IN ACCORDANCE WITH THE CITY OF LAW VALLEY WATER DISTRICT WATER LIVING PROJECT 86200 SPECIFICATIONS AND THE CITY OF LAW VALLEY WATER DISTRICT WATER LIVING PROJECT 86200 SPECIFICATIONS.
3. ALL CONSTRUCTION SHALL BE IN ACCORDANCE WITH THE CITY OF LAW VALLEY WATER DISTRICT WATER LIVING PROJECT 86200 SPECIFICATIONS AND THE CITY OF LAW VALLEY WATER DISTRICT WATER LIVING PROJECT 86200 SPECIFICATIONS.
4. ALL CONSTRUCTION SHALL BE IN ACCORDANCE WITH THE CITY OF LAW VALLEY WATER DISTRICT WATER LIVING PROJECT 86200 SPECIFICATIONS AND THE CITY OF LAW VALLEY WATER DISTRICT WATER LIVING PROJECT 86200 SPECIFICATIONS.
5. ALL CONSTRUCTION SHALL BE IN ACCORDANCE WITH THE CITY OF LAW VALLEY WATER DISTRICT WATER LIVING PROJECT 86200 SPECIFICATIONS AND THE CITY OF LAW VALLEY WATER DISTRICT WATER LIVING PROJECT 86200 SPECIFICATIONS.
6. ALL CONSTRUCTION SHALL BE IN ACCORDANCE WITH THE CITY OF LAW VALLEY WATER DISTRICT WATER LIVING PROJECT 86200 SPECIFICATIONS AND THE CITY OF LAW VALLEY WATER DISTRICT WATER LIVING PROJECT 86200 SPECIFICATIONS.
7. ALL CONSTRUCTION SHALL BE IN ACCORDANCE WITH THE CITY OF LAW VALLEY WATER DISTRICT WATER LIVING PROJECT 86200 SPECIFICATIONS AND THE CITY OF LAW VALLEY WATER DISTRICT WATER LIVING PROJECT 86200 SPECIFICATIONS.
8. ALL CONSTRUCTION SHALL BE IN ACCORDANCE WITH THE CITY OF LAW VALLEY WATER DISTRICT WATER LIVING PROJECT 86200 SPECIFICATIONS AND THE CITY OF LAW VALLEY WATER DISTRICT WATER LIVING PROJECT 86200 SPECIFICATIONS.
9. ALL CONSTRUCTION SHALL BE IN ACCORDANCE WITH THE CITY OF LAW VALLEY WATER DISTRICT WATER LIVING PROJECT 86200 SPECIFICATIONS AND THE CITY OF LAW VALLEY WATER DISTRICT WATER LIVING PROJECT 86200 SPECIFICATIONS.
10. ALL CONSTRUCTION SHALL BE IN ACCORDANCE WITH THE CITY OF LAW VALLEY WATER DISTRICT WATER LIVING PROJECT 86200 SPECIFICATIONS AND THE CITY OF LAW VALLEY WATER DISTRICT WATER LIVING PROJECT 86200 SPECIFICATIONS.



CITY OF LAW VALLEY SPECIFICATIONS
 THE WATER DISTRICT WATER LIVING PROJECT 86200 SPECIFICATIONS SHALL BE IN ACCORDANCE WITH THE CITY OF LAW VALLEY SPECIFICATIONS.

- WATER CONNECTION NOTES**
1. INSTALL 2" BRASS VALVE ON MAIN LINE AND INSTALL 1" BRASS VALVE ON BRANCH LINE.
 2. INSTALL 1" BRASS VALVE ON BRANCH LINE.
 3. INSTALL 1" BRASS VALVE ON BRANCH LINE.
 4. INSTALL 1" BRASS VALVE ON BRANCH LINE.
 5. INSTALL 1" BRASS VALVE ON BRANCH LINE.
 6. INSTALL 1" BRASS VALVE ON BRANCH LINE.
 7. INSTALL 1" BRASS VALVE ON BRANCH LINE.
 8. INSTALL 1" BRASS VALVE ON BRANCH LINE.
 9. INSTALL 1" BRASS VALVE ON BRANCH LINE.
 10. INSTALL 1" BRASS VALVE ON BRANCH LINE.

REVISIONS

NO.	DATE	DESCRIPTION
1	10/15/00	ISSUED FOR PERMITS
2	10/15/00	ISSUED FOR PERMITS
3	10/15/00	ISSUED FOR PERMITS
4	10/15/00	ISSUED FOR PERMITS
5	10/15/00	ISSUED FOR PERMITS
6	10/15/00	ISSUED FOR PERMITS
7	10/15/00	ISSUED FOR PERMITS
8	10/15/00	ISSUED FOR PERMITS
9	10/15/00	ISSUED FOR PERMITS
10	10/15/00	ISSUED FOR PERMITS

REVISIONS

NO.	DATE	DESCRIPTION
1	10/15/00	ISSUED FOR PERMITS
2	10/15/00	ISSUED FOR PERMITS
3	10/15/00	ISSUED FOR PERMITS
4	10/15/00	ISSUED FOR PERMITS
5	10/15/00	ISSUED FOR PERMITS
6	10/15/00	ISSUED FOR PERMITS
7	10/15/00	ISSUED FOR PERMITS
8	10/15/00	ISSUED FOR PERMITS
9	10/15/00	ISSUED FOR PERMITS
10	10/15/00	ISSUED FOR PERMITS

PRELIMINARY NOTES

SEE PLAN SHEET 86200-1 FOR GENERAL NOTES AND SPECIFICATIONS.

DATE: 10/15/00

BY: [Signature]

APPROVED FOR CONSTRUCTION

DATE: 10/15/00

BY: [Signature]

DESIGNER'S CERTIFICATE

I, the undersigned, being a duly licensed Professional Engineer in the State of California, do hereby certify that I am the author of the design and content of this plan, and that I am a duly licensed Professional Engineer in the State of California.

DATE: 10/15/00

BY: [Signature]

GENERAL CONTRACTOR'S CERTIFICATE

I, the undersigned, being a duly licensed General Contractor in the State of California, do hereby certify that I am the contractor for the construction of this project, and that I am a duly licensed General Contractor in the State of California.

DATE: 10/15/00

BY: [Signature]



CONCRETE

ITEM	QUANTITY	UNIT
1. CONCRETE	100.00	CY
2. REINFORCING BARS	100.00	LB
3. FORMWORK	100.00	SQ YD
4. BRICK	100.00	SQ YD
5. PLASTER	100.00	SQ YD
6. PAINT	100.00	GA
7. ROOFING	100.00	SQ YD
8. FLOORING	100.00	SQ YD
9. MECHANICAL	100.00	EA
10. ELECTRICAL	100.00	EA

- TRUCK CONNECTION NOTES**
1. INSTALL 2" BRASS VALVE ON MAIN LINE AND INSTALL 1" BRASS VALVE ON BRANCH LINE.
 2. INSTALL 1" BRASS VALVE ON BRANCH LINE.
 3. INSTALL 1" BRASS VALVE ON BRANCH LINE.
 4. INSTALL 1" BRASS VALVE ON BRANCH LINE.
 5. INSTALL 1" BRASS VALVE ON BRANCH LINE.
 6. INSTALL 1" BRASS VALVE ON BRANCH LINE.
 7. INSTALL 1" BRASS VALVE ON BRANCH LINE.
 8. INSTALL 1" BRASS VALVE ON BRANCH LINE.
 9. INSTALL 1" BRASS VALVE ON BRANCH LINE.
 10. INSTALL 1" BRASS VALVE ON BRANCH LINE.

WATER CONNECTION NOTES

SEE PLAN SHEET 86200-1 FOR GENERAL NOTES AND SPECIFICATIONS.

TRUCK CONNECTION NOTES

SEE PLAN SHEET 86200-1 FOR GENERAL NOTES AND SPECIFICATIONS.

BRICK CONNECTION

DATE: 10/15/00

BY: [Signature]

UTILITY PLAN FOR
 BRICKWORKER BUILDING

DATE: 10/15/00

BY: [Signature]

