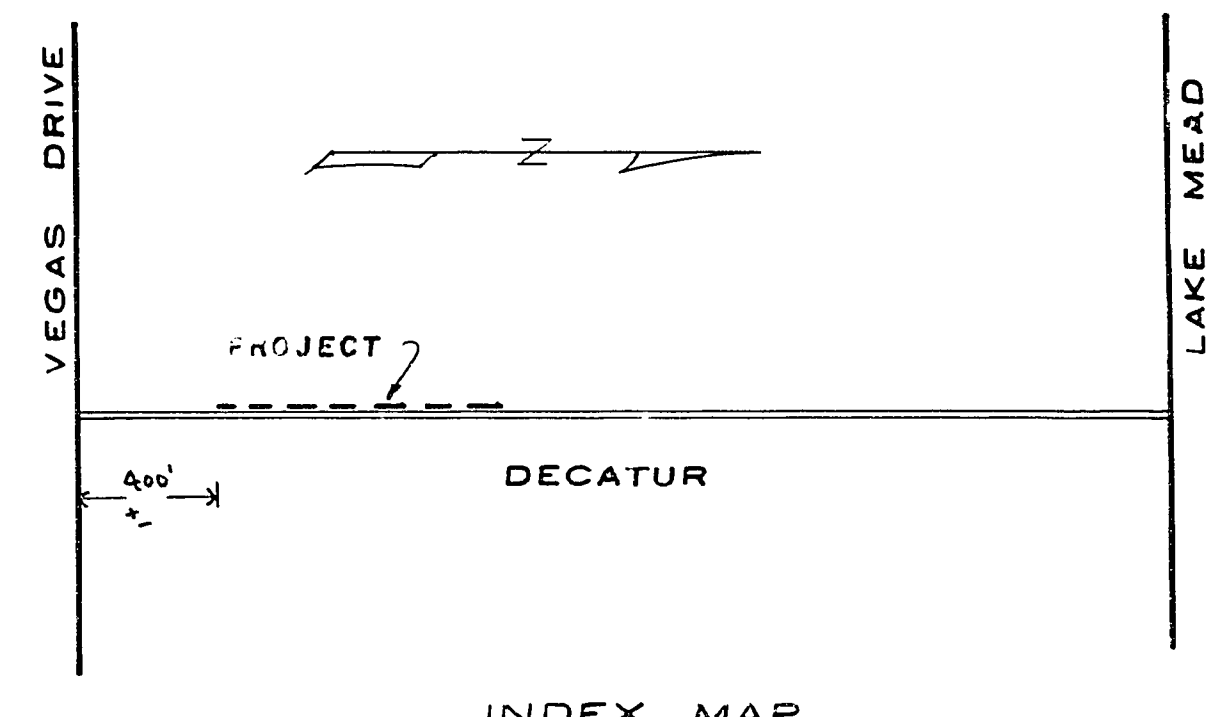
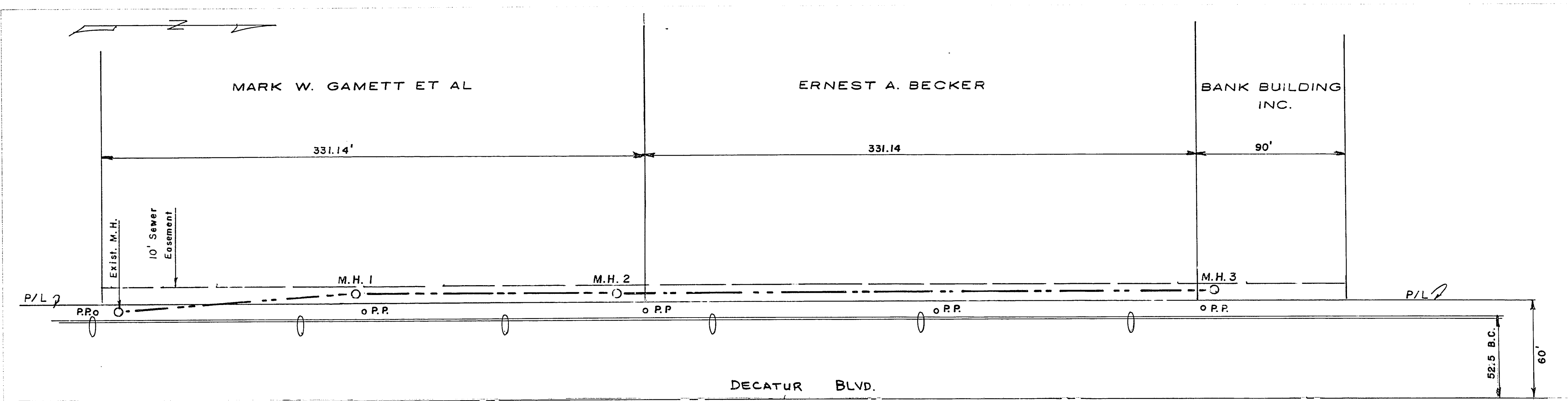
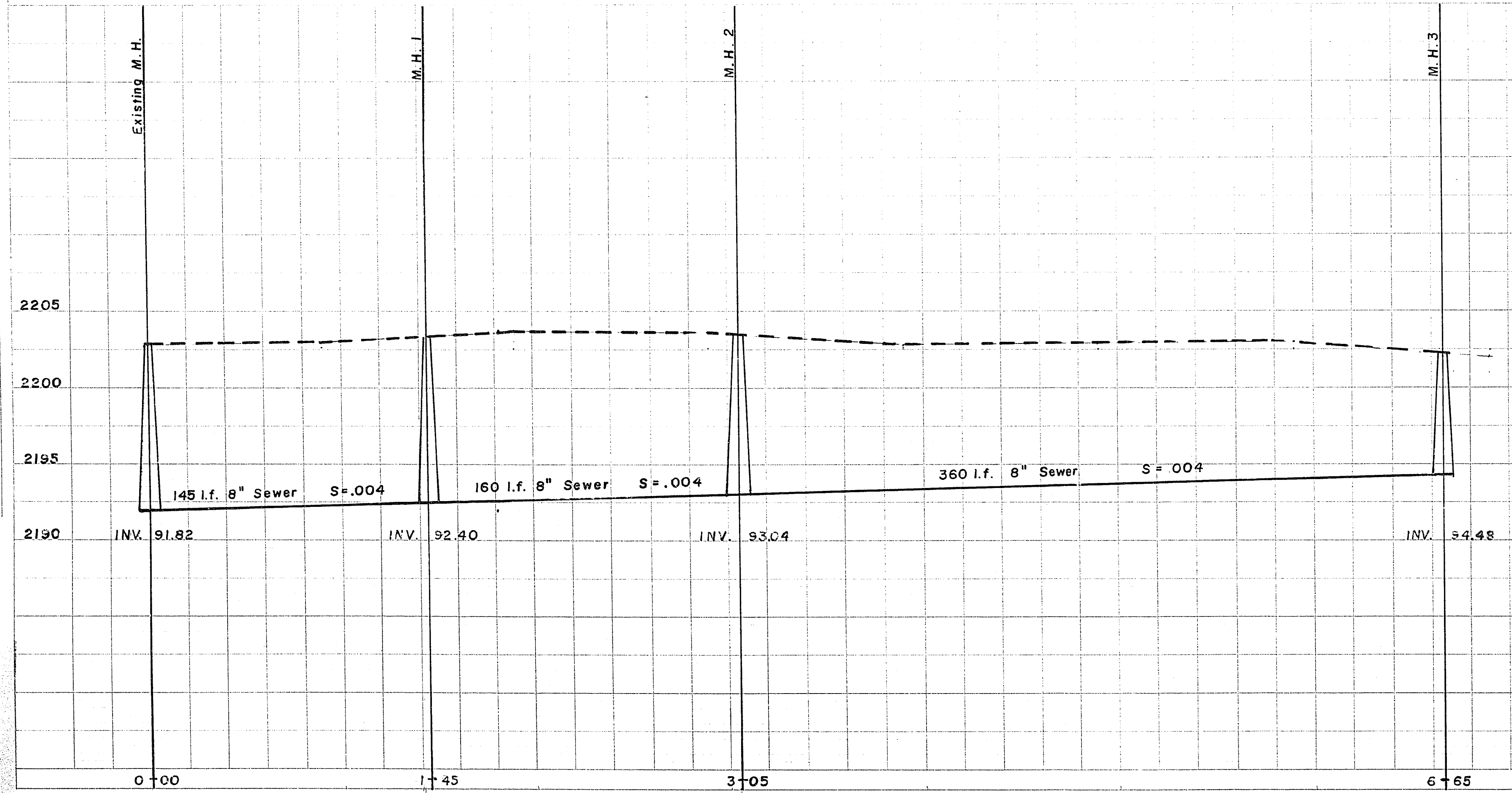


PLAN  
 SHEET NO. 1  
 DATE 3/22/87

PROFILE  
 SHEET NO. 1  
 DATE 3/22/87



HOR. SCALE 1" = 40'  
 VERT. SCALE 1" = 5'



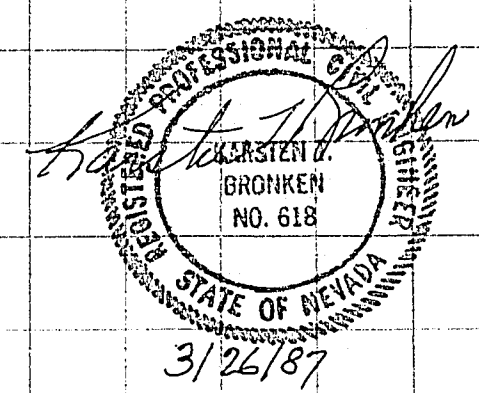
BANK BUILDING INC.  
 SEWER MAIN EXTENSION

APPROVAL  
*R. L. Anton*  
 C.L.V. Sanitation Chief  
 8-20-87  
 Date

QUANTITIES  
 8" P.V.C. SEWER MAIN 665'  
 SEWER MANHOLES 3

C.L.V. SEWER NOTES  
 1 - ALL SANITARY SEWER INSTALLATIONS SHALL CONFORM TO THE STANDARD DETAILS AND SPECIFICATIONS OF THE CITY OF LAS VEGAS, AND SHALL ALSO CONFORM TO THE UNIFORM STANDARD SPECIFICATIONS FOR PUBLIC WORKS, LATEST EDITION

BENCHMARK  
 CLARK COUNTY BM # 06119C3  
 1740 NO. DECATUR (EASTSIDE)  
 ELEV. = 2202.78



BRONKEN ENGINEERING  
 CHARTERED  
 1818 Industrial Road  
 LAS VEGAS, NEVADA 89102  
 Phone 382-6660

307-V608

83-673