

SEWER CONSTRUCTION NOTES

NO.	ITEM
1	SD STD. PER DESIGN AND CONSTRUCTION ITEM STANDARDS FOR WASTEWATER COLLECTION SYSTEMS
2	INSTALL 48" DIA. SEWER MANHOLE PER STD. DWG. NO. SD-1
3	INSTALL 8" DIA. P.V.C. SDR-35 SEWER MAIN
4	INSTALL 8" x 4" WYE WITH 45° BEND
5	INSTALL 4" DIA. C900 PVC SEWER LATERAL (PRIVATE)
6	RECONSTRUCT TO T-LOCKED M.H.

WATER NOTES

NO.	ITEM
1	INSTALL 1" METER PER UDACS PLATE NO. 1D
2	INSTALL 1" BRASS FROM METER TO RPPA
3	INSTALL 1" TYPE "K" COPPER SERVICE LINE (PUBLIC) UP TO METER
4	INSTALL CAP SAME SIZE AS MAIN
5	INSTALL 1" RPPA PER UDACS PLATE NO. 11A

BENCHMARK

CITY OF LAS VEGAS BENCHMARK NO. 5LV90 2456 RIVET AND PLATE IN CONCRETE CYLINDER AT SOUTHWEST CORNER OF BRADLEY ROAD AND ROME BLVD.
ELEVATION = 2309.12 FEET (NAVD 88 DATUM)
703.8215 METERS

BASIS OF BEARING

THE BEARING OF SOUTH 87°41'16" WEST AS SHOWN BY A MAP ON FILE IN THE CLARK COUNTY RECORDER'S OFFICE AS FILE 109, PAGE 14 OF PARCEL MAPS.

APPROVALS

City of Las Vegas - Fire Marshal: *[Signature]* 4/18/07
 Las Vegas Valley Water District: *[Signature]* 4-14-08
 Nevada Power Company: *[Signature]* 04/30/2007

NEVADA POWER COMPANY ACKNOWLEDGES THAT WE HAVE RECEIVED YOUR PLANS AND WILL PROVIDE SERVICE TO ALL ELECTRICAL NEEDS ASSOCIATED WITH THIS PROJECT. NEVADA POWER COMPANY RESERVES THE RIGHT TO ADDRESS ANY EXISTING OR FUTURE CONFLICTS ONCE THE FINAL DESIGN IS COMPLETED. THE NEW SERVICE AND THE RESOLUTION OF ANY CONFLICTS WILL BE ACCOMPLISHED PURSUANT TO THE NEVADA PUBLIC UTILITY COMMISSION'S RULES AND REGULATIONS.

PROPOSED 8" SEWER LINE IN TURKEY LANE

PROFILE

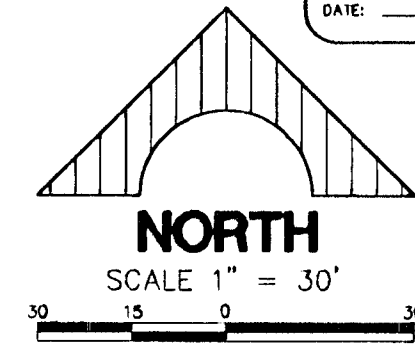
HORIZ.: 1" = 30'
VERT.: 1" = 3'

SANITARY SEWER MANHOLE SCHEDULE

M.H.#	ID	TYPE	STATION	Q. OFFSET	RIM EL.	8" INV. IN	8" INV. OUT
EXIST	1	SD-1	9+85.00, TURKEY LANE	5' LT	2304.92	2291.08	2290.50
1	SD-1	10+85.00, TURKEY LANE	5' LT	2305.10±	2298.50	2298.30	
2	SD-1	13+36.00, TURKEY LANE	5' LT	2306.60±	2299.95	2299.75	

EXISTING "PRIVATE" WELLS TO REMAIN IN SERVICE

If the existing private well is to remain in service, a District approved backflow prevention assembly shall be installed immediately downstream of the District's water meter in accordance with UDACS Plate No. 11A. The new service shall not be activated until the backflow prevention assembly has been successfully tested by the District.



Call before you UnderGround
1-702-455-7511
1-702-229-6611

Call before you Dig.
1-800-227-2600

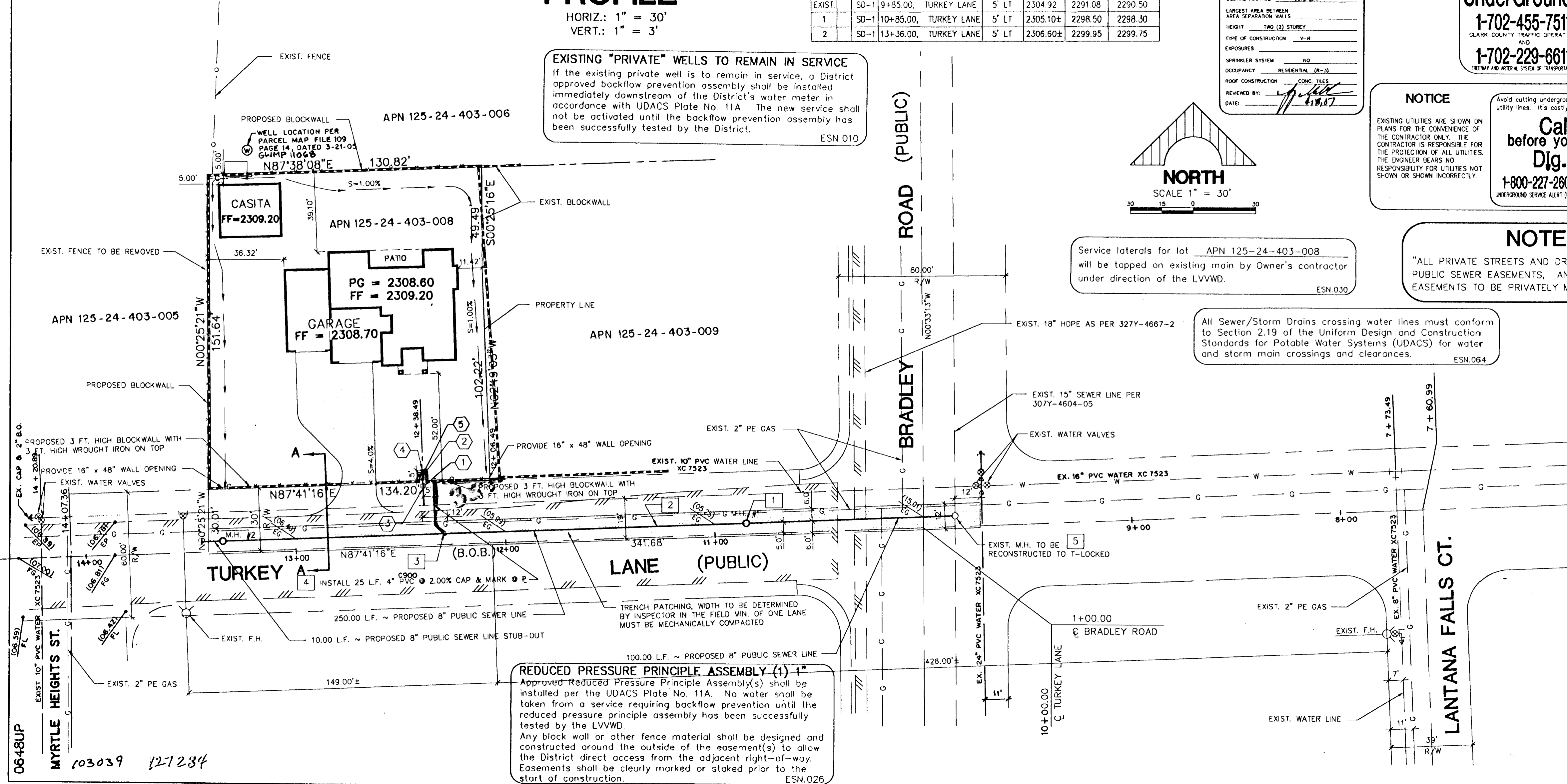
Call before you Overhead
1-702-593-6111

NOTE

"ALL PRIVATE STREETS AND DRIVE AISLES ARE P.U.E., PUBLIC SEWER EASEMENTS, AND PUBLIC DRAINAGE EASEMENTS TO BE PRIVATELY MAINTAINED BY HOA."

Service laterals for lot APN 125-24-403-008 will be tapped on existing main by Owner's contractor under direction of the LVVWD.

All Sewer/Storm Drains crossing water lines must conform to Section 2.19 of the Uniform Design and Construction Standards for Potable Water Systems (UDACS) for water and storm main crossings and clearances.



DELUNA, INC.
ENGINEERING • PLANNING • SURVEYING
2875 SOUTH JONES BLVD., SUITE 104, LAS VEGAS, NEV. 89146, (702) 255-6242

SEWER LINE EXTENSION
A.P.N.: 125 - 24 - 403 - 008
UTILITY PLAN

SHEET CONTENTS:

REV.	DATE	DESCRIPTION	CLY APPROVAL

SEAL: PROFESSIONAL ENGINEER - STATE OF NEVADA
LEONARDO V. DELUNA
No. 3794
EX.P. 12/31/08
SHEET 4 OF 5 SHEETS
CLY DWG. # 107V4872

Ass Built