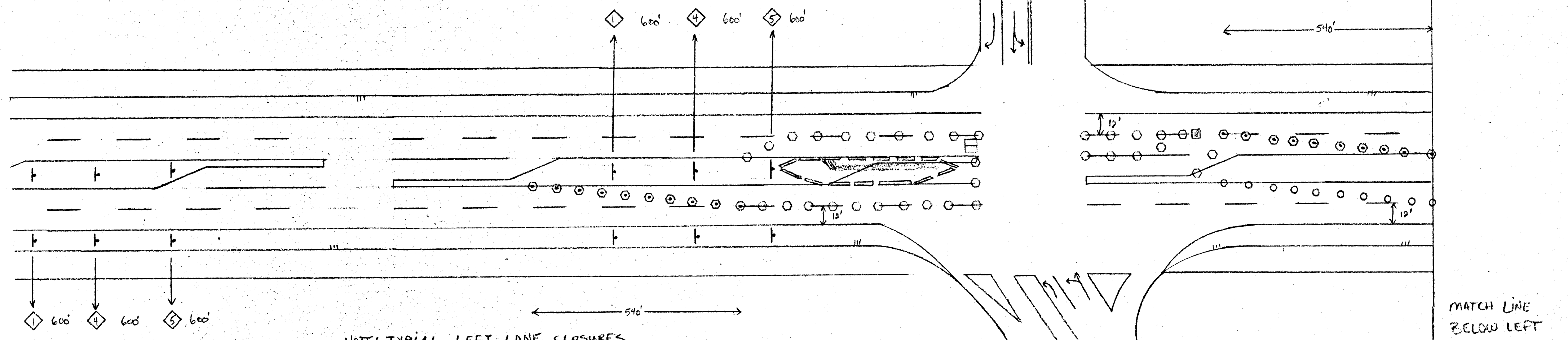
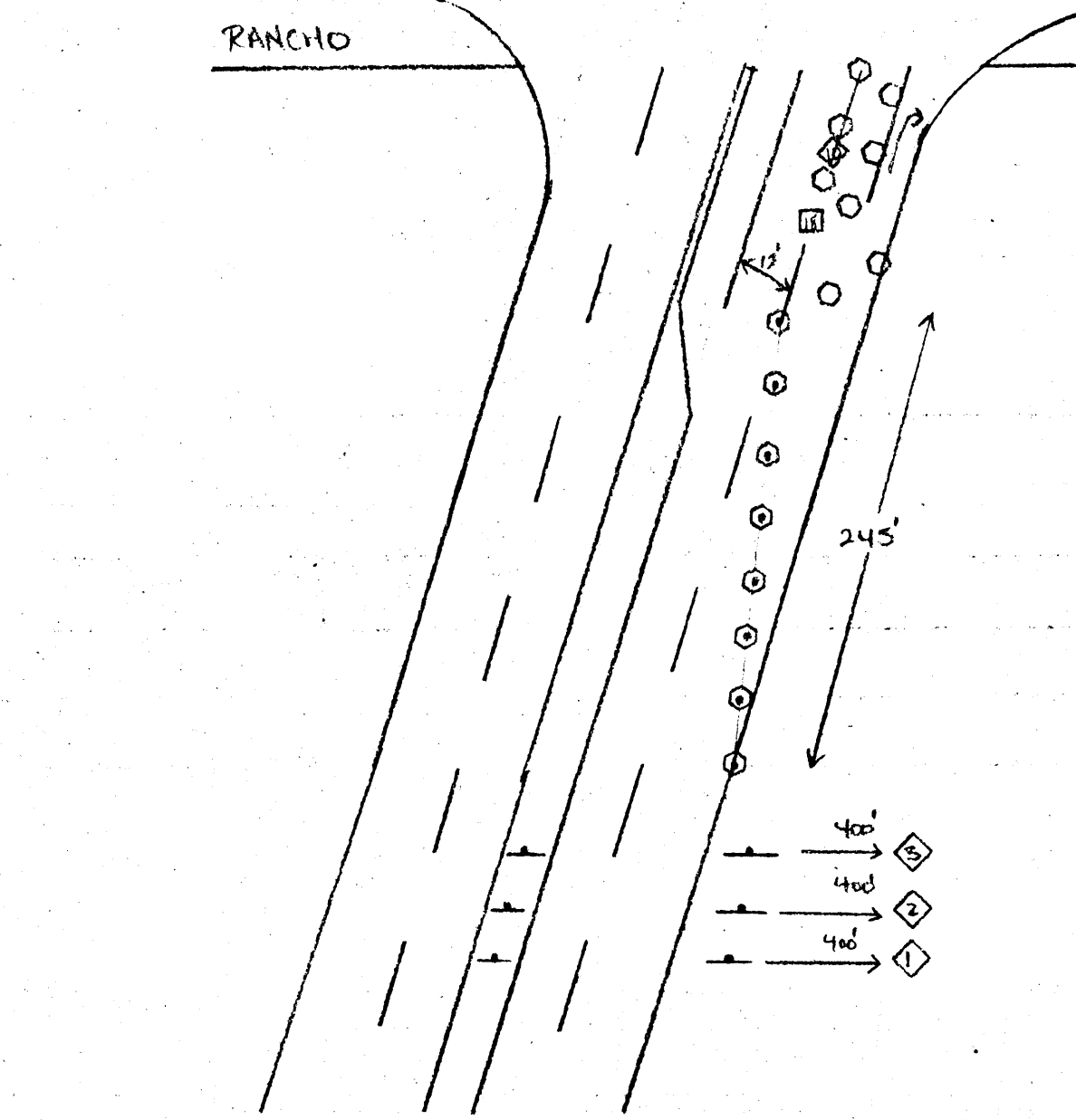
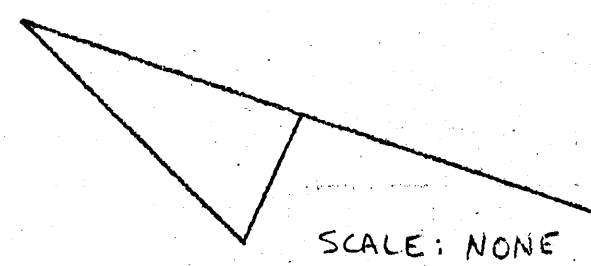


NOTE: FOR NORTH HALF CLOSURE AND SET-UP ON RANCHO SEE PAGE 2.

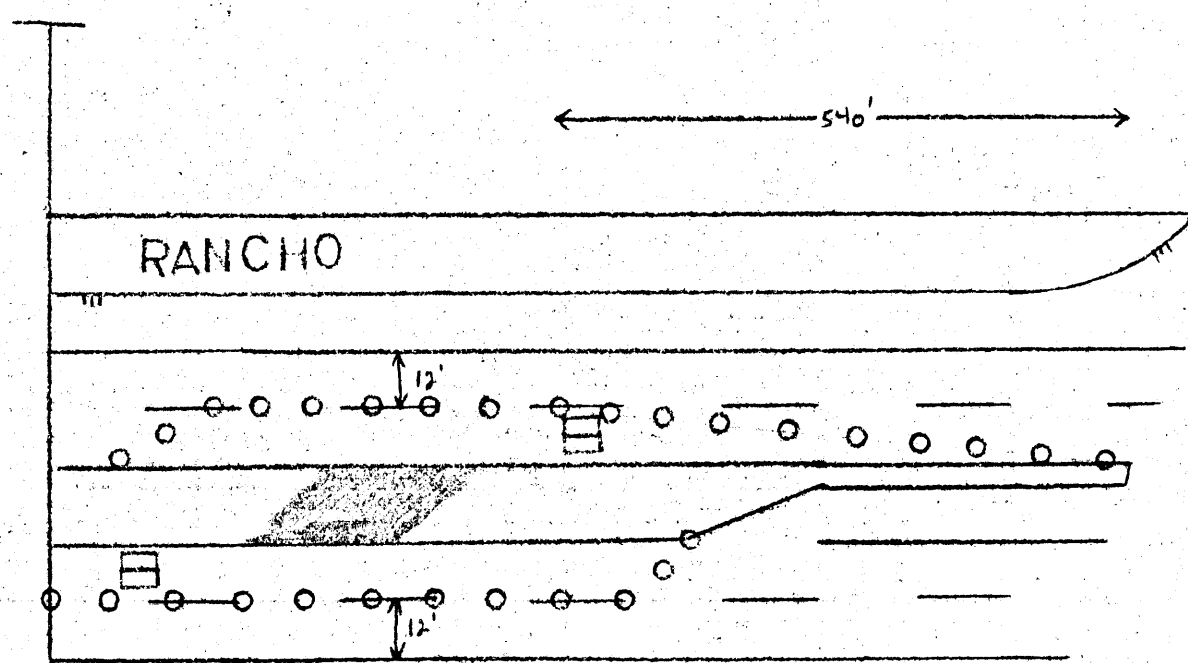


NOTE: TYPICAL LEFT LANE CLOSURES USED FROM STA 110+63 TO STA 140+63. NIGHTWORK.



NOTE: TYPICAL RIGHT LANE CLOSURE USED FROM STA 65+50 TO STA 85+26. ALSO USED FROM STA 87+54 TO STA 109+85. NIGHTWORK.

NOTE: TYPICAL PARK LANE CLOSURE USED FROM STA 65+50 TO STA 85+26. ALSO USED FROM STA 87+54 TO STA 109+85. DAYWORK.



MATCH LINE ABOVE RIGHT  
NOTE: TYPICAL LEFT LANE CLOSURES USED AT APPROX STA 109+00. ALSO USED AT APPROX STA 138+00. TEMP DETOUR TO MEET NDOT SPECS.

