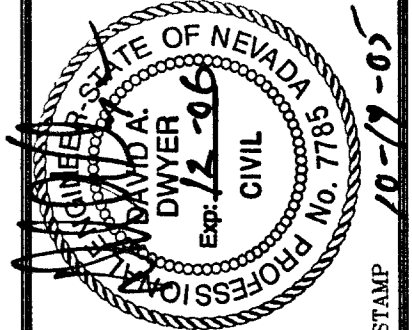


Job No  
 FILE No  
**REUSE OF DOCUMENTS**  
 THIS DOCUMENT, AND THE DEAS AND DEEDS INCORPORATED HEREIN, AS AN INSTRUMENT OF PROFESSIONAL SERVICE, IS THE PROPERTY OF DWYER ENGINEERING, INC. IT IS NOT TO BE USED IN THE WHOLE OR IN PART FOR ANY OTHER PROJECT WITHOUT THE WRITTEN AUTHORIZATION OF DWYER ENGINEERING, INC.

APPROVED	REVISIONS	NO	DATE	DESCRIPTION

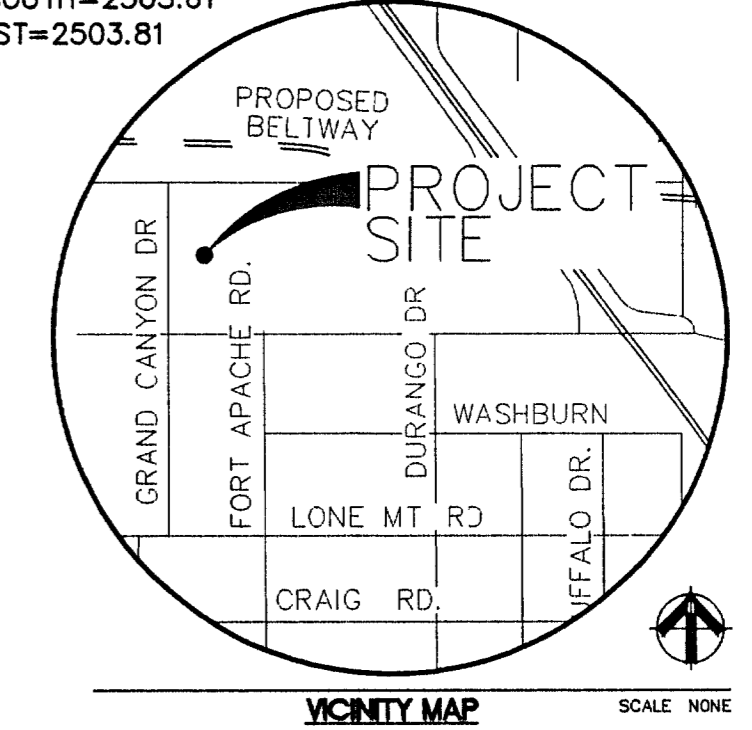
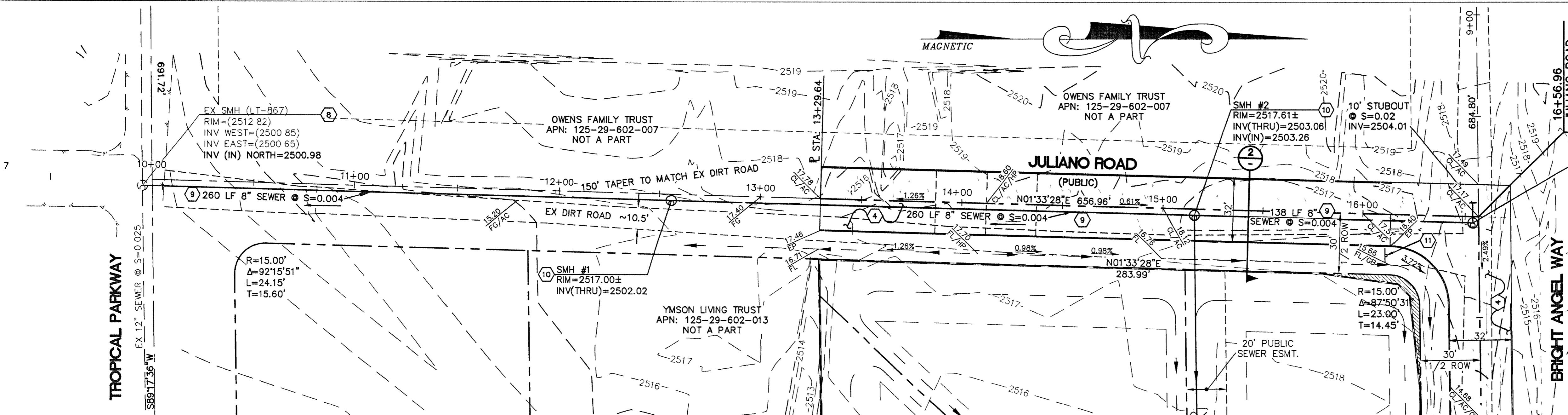


**DWYER ENGINEERING, INC.**  
 CIVIL ENGINEERS  
 LAND SURVEYORS  
 WATER RIGHTS  
 LAND USE PLANNING  
 7250 S. WASHINGTON BLVD., SUITE B  
 LAS VEGAS, NEVADA 89136  
 TEL: (702) 254-2200  
 FAX: (702) 254-2206

**PLAN AND PROFILE-JULIANO ROAD**  
 A&W BRIGHT ANGEL LLC  
 SE CORNER OF JULIANO ROAD AND BRIGHT ANGEL WAY  
 MSM-260-04 & MSM-261-04  
 CLARK COUNTY, NEVADA 125-29-602-001

JOB No 24751  
 DATE 10/18/05  
 VERT SCALE 1"=3'  
 HORIZ SCALE 1"=30'  
 DRAWN BY JGR  
 CHECKED BY DAD  
 SHEET 5 of 7  
 HTE 05-9127

CLW #307951



**CONSTRUCTION NOTES**

- 1 NOT USED.
- 2 NOT USED.
- 3 NOT USED.
- 4 INSTALL NON-URBAN ROAD PER STANDARD DWG. NO. 206.4 WITH AC PAVING PER THIS SECTION. (JULIANO STREET & BRIGHT ANGEL WAY)
- 5 NOT USED.
- 6 NOT USED.
- 7 NOT USED.
- 8 CONNECT 8" SEWER MAIN TO EXISTING SEWER MANHOLE (LT-867).
- 9 INSTALL 8" PVC SEWER MAIN PER US NO. 502 & 504.
- 10 INSTALL 48" TYPE I SEWER MANHOLE PER STD DWG NO. 403.
- 11 INSTALL 30" R1-1 "STOP" SIGN W/ 9" D3 STREET SIGN.



ALL SEWER/STORM DRAINS CROSSING WATER LINES MUST CONFORM TO SECTION 219 OF THE UNIFORM DESIGN AND CONSTRUCTION STANDARDS FOR POTABLE WATER SYSTEMS (UDACS) FOR WATER AND STORM MAIN CROSSINGS AND CLEARANCES.

**SEWER CONTRIBUTION**

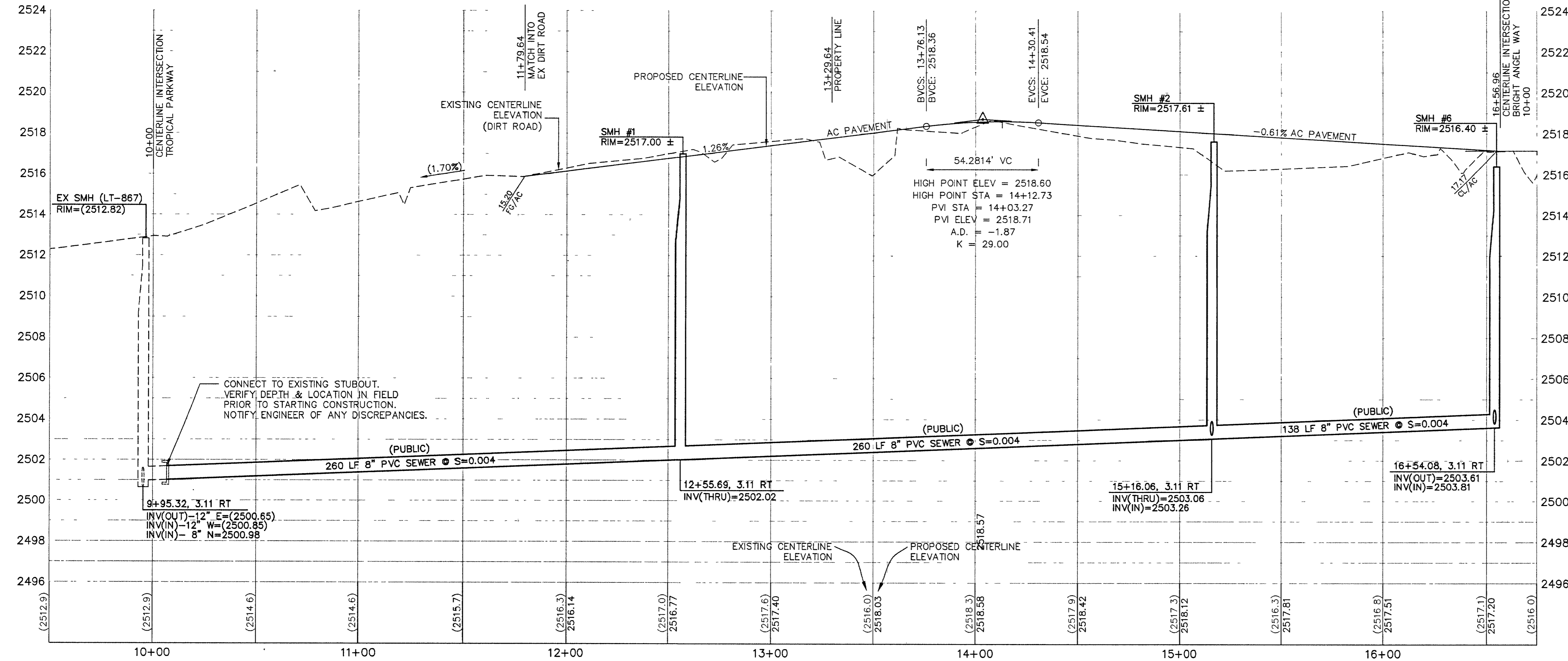
AVERAGE DAILY CONTRIBUTION:	1250 GPD
PEAK FLOW:	4250 GPD

**BASIS OF BEARINGS:**

SOUTH 00°57'28" WEST BEING THE BEARING OF RILEY STREET BETWEEN TROPICAL PARKWAY AND BRIGHT ANGEL WAY AS SHOWN FILE 79 OF PARCEL MAPS, PAGE 22 IN THE OFFICE OF THE CLARK COUNTY, NEVADA RECORDER.

**BENCHMARK:**

CLARK COUNTY VERTICAL CONTROL V.2003 BENCHMARK No. BLVD 296  
 CITY OF LAS VEGAS RIVET AND ROUND ALUM. PLATE IN EAST EDGE OF MAILBOX CONCRETE PAD, NORTHEAST CORNER OF W. AZURE AVE. AND EL CAPITAN WAY  
 NAVD88 ELEVATION 772.450 METERS (2534.28 FEET)



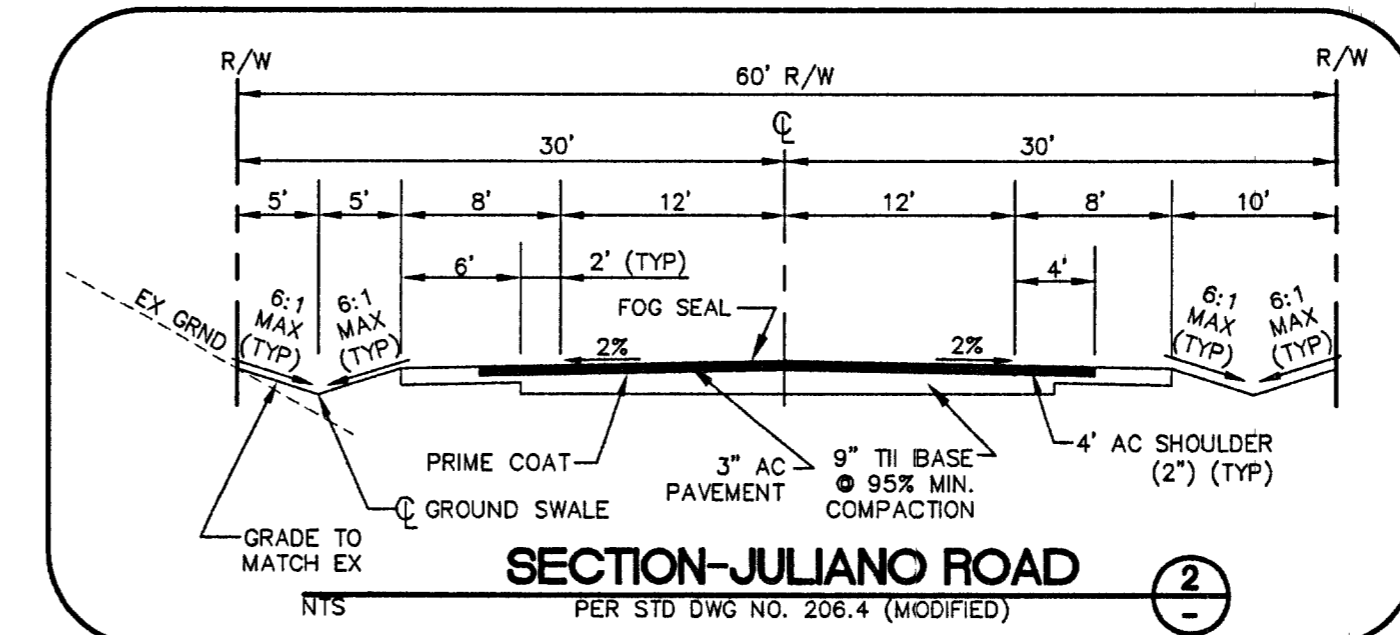
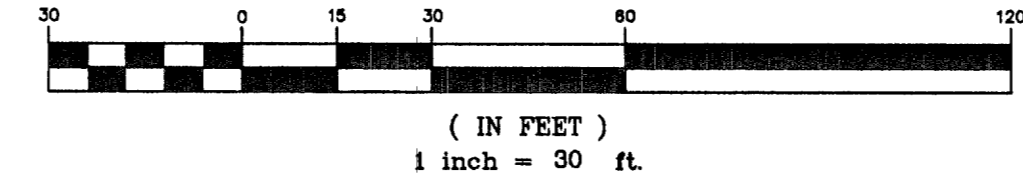
**PROFILE-JULIANO ROAD**

HORIZONTAL SCALE: 1"=30'  
 VERTICAL SCALE: 1"=3'

FOR LEGEND AND ABBREVIATIONS SEE SHEET #1

FOR PUBLIC SEWER QUANTITIES SEE SHEET #3.

**GRAPHIC SCALE**



**UTILITY NOTE**

THE LOCATION OF UNDERGROUND UTILITIES SHOWN HEREON HAS BEEN DETERMINED FROM SURFACE EVIDENCE OF THEIR EXISTENCE OR FROM INFORMATION OBTAINED FROM THE UTILITY COMPANIES. THE ENGINEER ACCEPTS NO LIABILITY FOR THE EXISTENCE OR NONEXISTENCE OF UTILITY LINES. CONTRACTORS AND OTHERS USING THIS MAP MUST CONFIRM THE LOCATION OF UNDERGROUND LINES OR STRUCTURES WITH THE UTILITY COMPANIES PRIOR TO COMMENCING ANY EXCAVATION.

NOTE: REPLACE ALL TRAFFIC CONTROL DEVICES (SIGNS OR PAVEMENT MARKINGS), UNDER CLARK COUNTY'S JURISDICTION, THAT ARE DISTURBED, DESTROYED, MOVED OR MODIFIED BY TRENCHING ACTIVITY TO CLARK COUNTY'S SATISFACTION. ALL MATERIAL USED SHALL MEET CLARK COUNTY'S SPECIFICATIONS OR WILL BE AN APPROVED EQUAL.