

2-91

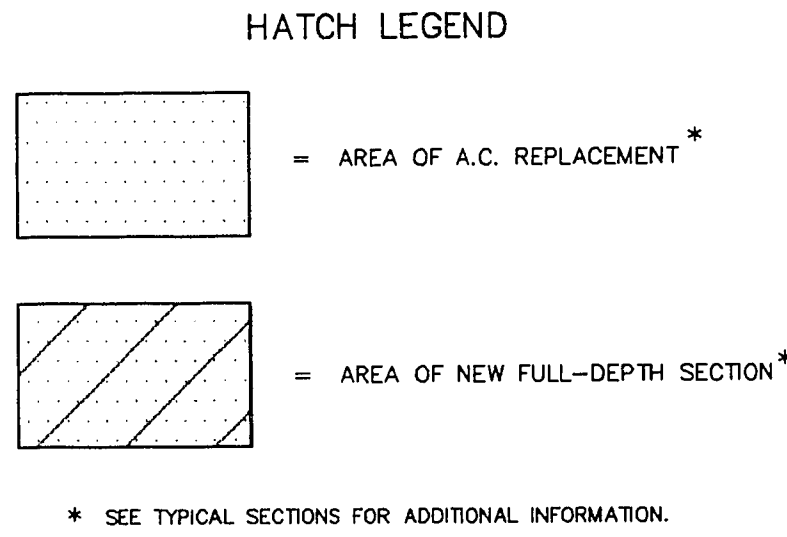
SCALE: 1"=30'

BASIS OF BEARINGS

The north line of the NW 1/4 of Section 31, T 20 S, R 62 E, M.D.M., being the centerline of Bonanza Road, bears S 89°42'31" E per Parcel Map, File 47, Page 3, Official Records of Clark County, Nevada.

BENCHMARK

CLVBM #2LV02395WS
R&P of the NE corner of Bonanza Road & Pecos Road
Elevation= 1793.55



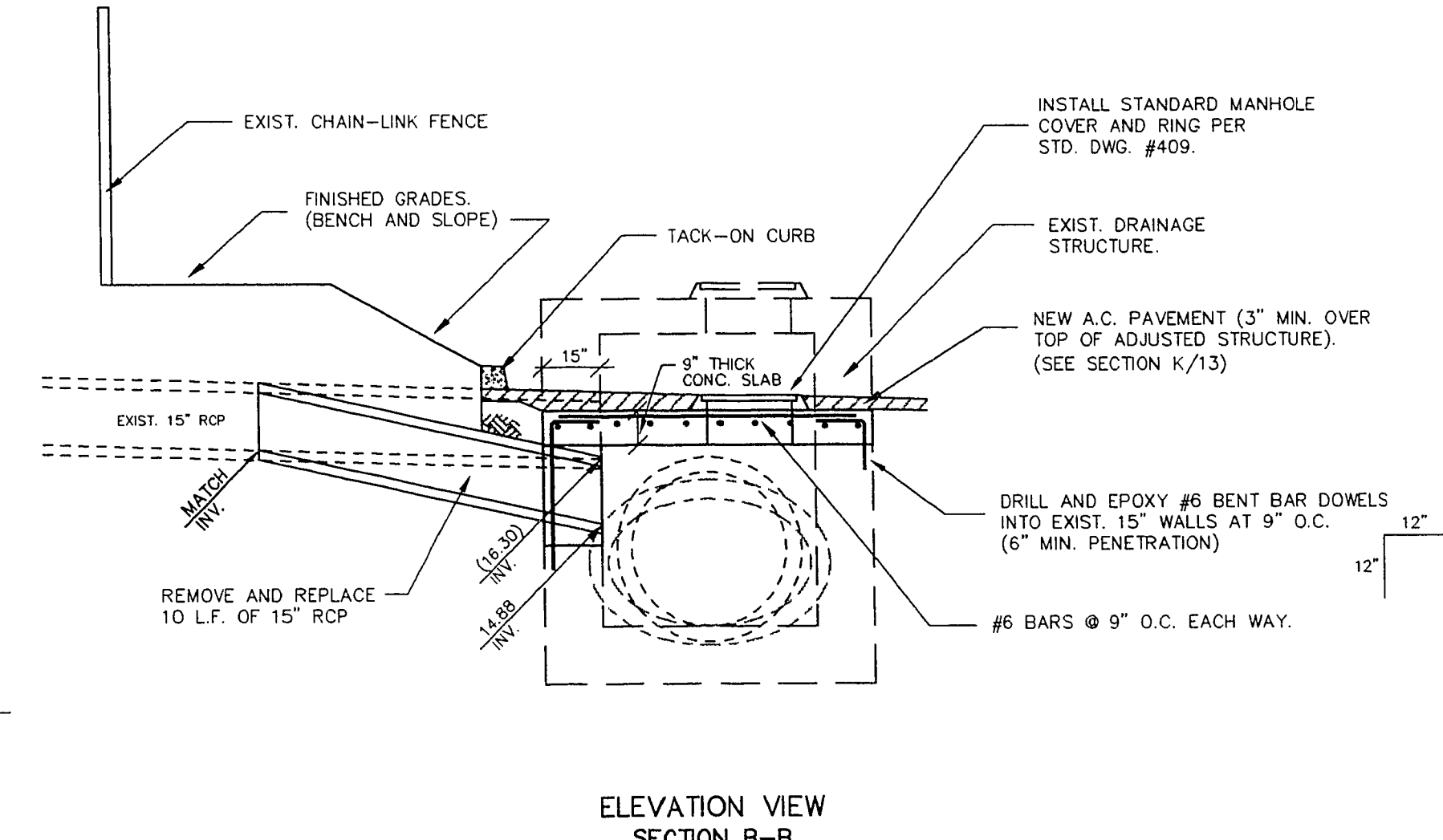
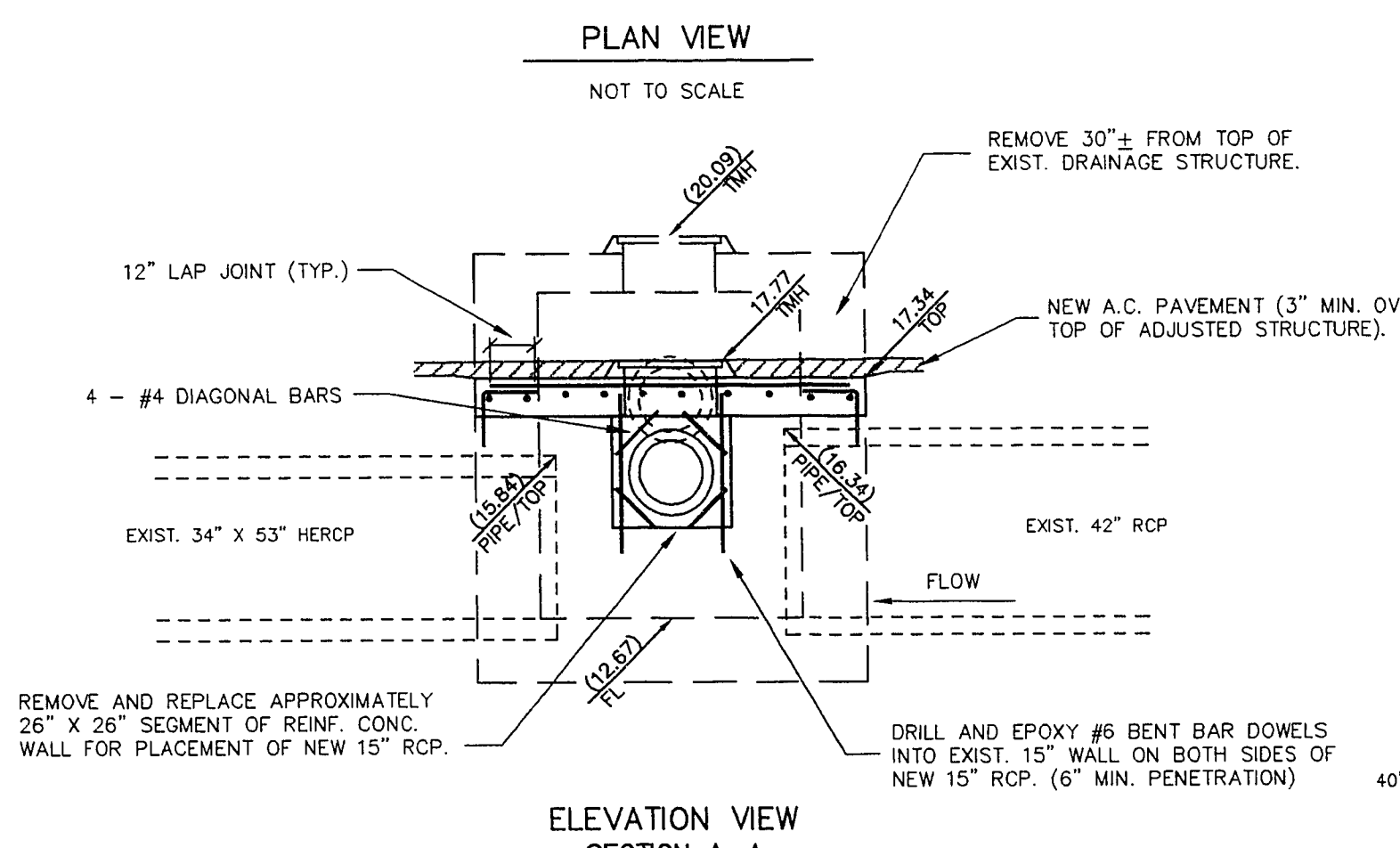
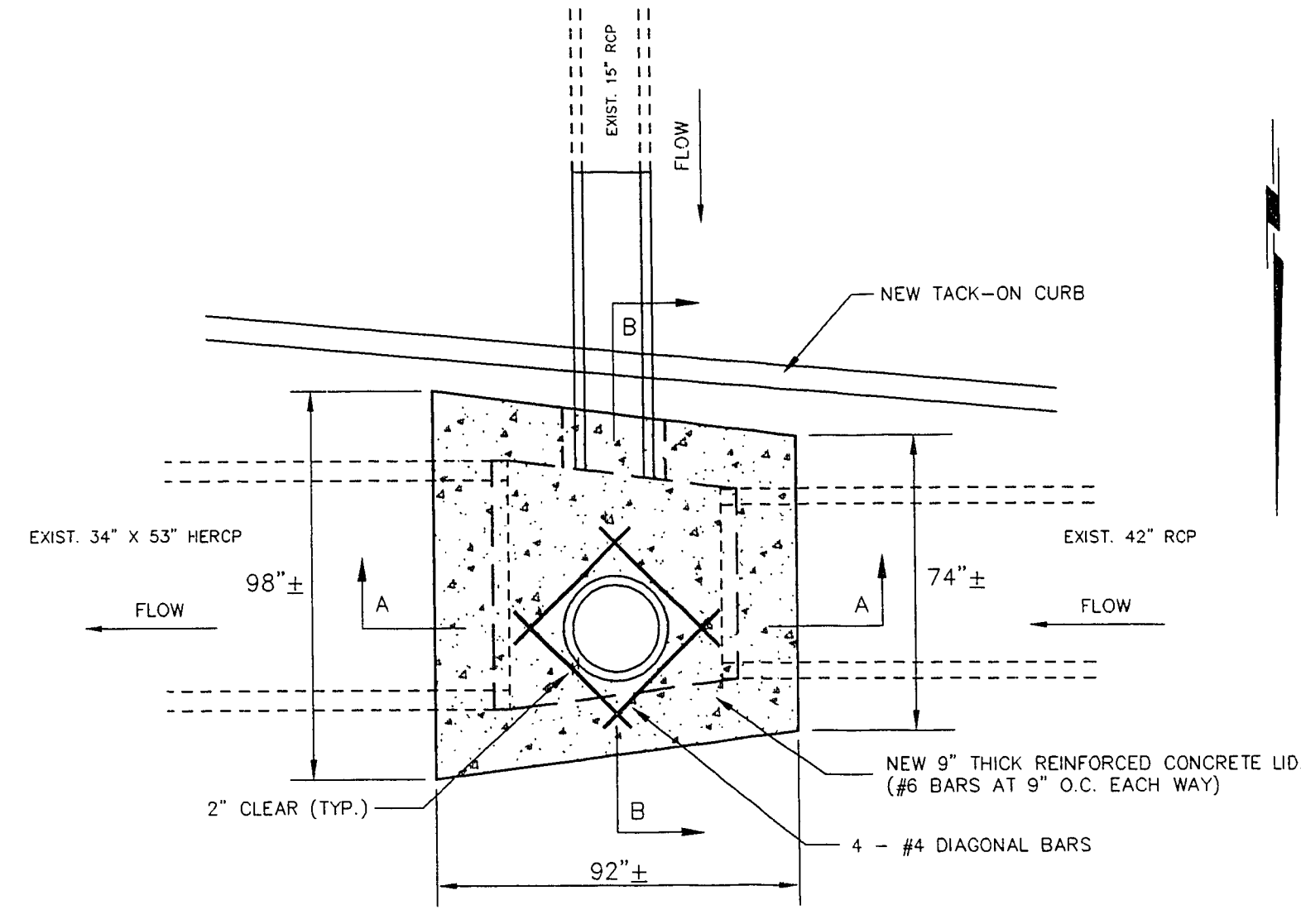
CONSTRUCTION NOTES.

- ① ADJUST VALVE BOX TO F.G. PER STD. DWG. #517.
- ② ADJUST S.S.M.H. TO F.G. PER STD. DWG. #408.
- ③ CONST. TYPE I SIDEWALK RAMP PER STD. DWG. #235. (A=8', B=8')
- ④ REMOVE AND REPLACE CONC. CROSS GUTTER TO DIMENSIONS SHOWN PER STD. DWG. #228.
- ⑤ SAWCUT AND MATCH EXIST. A.C. PAVEMENT.
- ⑥ SET TYPE III MONUMENT PER STD. DWG. #241.
- ⑦ REMOVE AND REPLACE CURB AND GUTTER PER STD. DWG. #216.
- ⑧ REMOVE AND REPLACE SIDEWALK PER STD. DWG. #234.
- ⑨ REMOVE AND REPLACE ALLEY DRIVEWAY PER STD. DWG. #227.
- ⑩ REMOVE AND REPLACE EXIST. A.C. PAVEMENT (2" MIN.).
- ⑪ REMOVE AND REPLACE EXIST. A.C. PAVEMENT (3" MIN.).

ENGINEER'S ESTIMATED QUANTITIES ON SHEET 15
SAWTOOTH STREET IMPROVEMENT PHASE 4

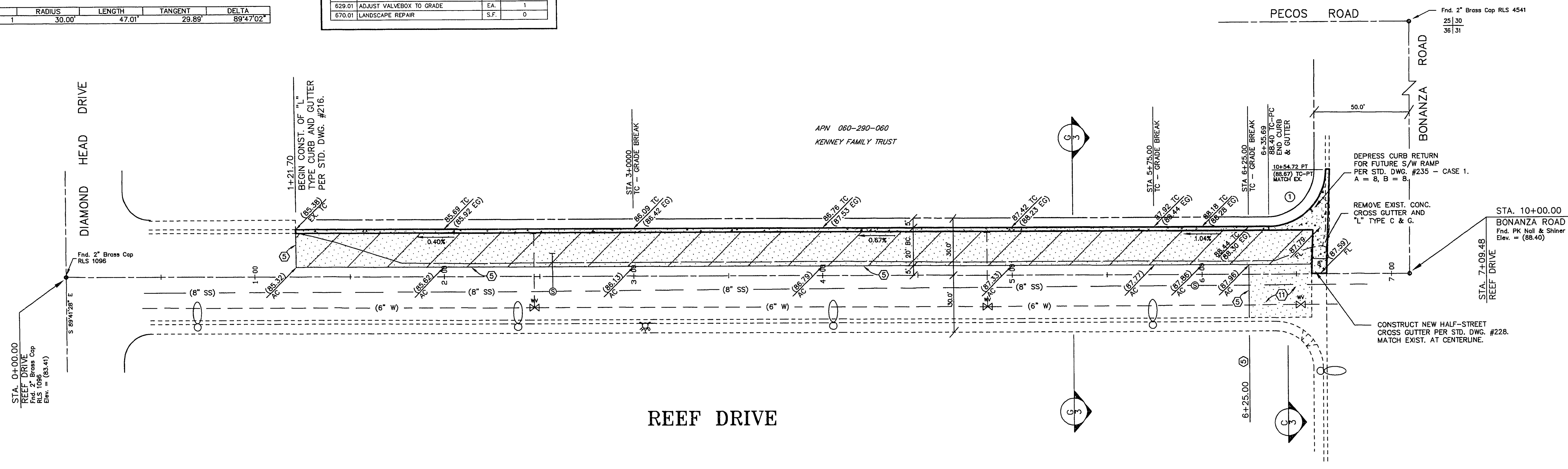
ITEM #	ITEM DESCRIPTION	UNIT	ESTIMATED QUANTITY
201.01	REMOVE TREES & SHRUBS	EA.	0
202.01	REMOVE ASPHALT CONCRETE PAVEMENT	S.Y.	282
202.02	REMOVE CURB & GUTTER	L.F.	40
202.03	REMOVE CONCRETE CROSS GUTTER	S.F.	110
202.04	REMOVE CONCRETE SIDEWALK	S.F.	0
202.05	RELOCATE GUARDRAIL	L.F.	0
202.06	REMOVE AND REINSTALL FENCE	L.F.	0
203.01	ROADWAY EXCAVATION	C.Y.	613
203.02	OVER EXCAVATION & BACKFILL	C.Y.	110
202.01	SUBGRADE PREPARATION	S.Y.	1182
302.02	BASE PREPARATION	S.Y.	64
302.03	TYPE II AGGREGATE BASE	C.Y.	316
402.01	HOT PLANT MIX BITUMINOUS PAVEMENT	TN.	193
603.01	18" RCP DRAIN PIPE	L.F.	0
609.01	ADJUST STORM DRAIN JUNCTION BOX	EA.	0
609.02	48" TYPE I STORM DRAIN MANHOLE	EA.	0
609.03	TYPE "B" DROP INLET	EA.	0
609.04	ADJUST EXISTING MANHOLE TO GRADE	EA.	0
609.05	10' SIDEWALK CROSS DRAIN	EA.	0
609.06	2' SIDEWALK CROSS DRAIN	EA.	0
613.01	P.C.C. CROSS GUTTER	S.F.	478
613.02	P.C.C. SIDEWALK	S.F.	0
613.03	P.C.C. ALLEY DRIVEWAY	S.F.	0
613.04	P.C.C. CURB & GUTTER	L.F.	514
613.05	P.C.C. RESIDENTIAL DRIVEWAY	S.F.	0
613.06	P.C.C. TACK ON CURB	L.F.	0
621.01	TYPE III MONUMENTS	EA.	0
623.01	REPLACE TRAFFIC DETECTOR LOOPS	EA.	0
623.02	STREET LIGHT ASSEMBLY (100W)	EA.	0
623.03	STREET LIGHT ASSEMBLY (200W)	EA.	0
623.04	-1/4" STREET LIGHT CONDUIT W/WIRE	L.F.	0
628.01	THERMOPLASTIC PAVEMENT MARKINGS	S.F.	0
629.01	ADJUST VALVEBOX TO GRADE	EA.	1
670.01	LANDSCAPE REPAIR	S.F.	0

CURVE	RADIUS	LENGTH	TANGENT	DELTA
1	30.00'	47.01'	29.89'	89°47'02"



STORM DRAIN JUNCTION BOX
ADJUSTMENT DETAIL

ELM AVENUE - SHEET 14



DATE	REVISIONS
SCALE (V) N/A	DATE SEP. 2, 1994
SCALE (H) 1"=30'	DESIGN BY DWM
F.L.D. BK. # N/A	W.A. # W09313
<p>ENGINEERING DESIGN SECTION</p> <p>CITY ENGINEER: DENNIS ANDERSON, P.E. DESIGN ENGINEER: EDWARD C. NETTENSTROM, P.E. DANIEL W. MUIRHEAD, P.E.</p>	
<p>DEPARTMENT OF PUBLIC WORKS</p> <p>PROJECT: SAWTOOTH STREET IMPROVEMENTS - PHASE 4 S.I.D. #1446</p>	
<p>SHEET: REEF DRIVE - DIAMOND HEAD DRIVE TO BONANZA ROAD STREET PLAN</p>	
<p>PROFESSIONAL ENGINEER STATE OF NEVADA DANIEL W. MUIRHEAD No. 10619</p>	
<p>9/2/94 DRAWING NO. 107-V2209 15 23</p>	

REF.DWG