

DISCLAIMER NOTE:

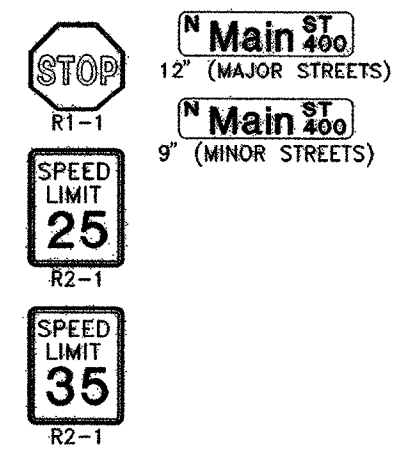
UTILITY LOCATIONS SHOWN HEREON ARE APPROXIMATE ONLY. IT SHALL BE THE CONTRACTOR'S RESPONSIBILITY TO DETERMINE THE EXACT HORIZONTAL AND VERTICAL LOCATION OF ALL EXISTING UNDERGROUND OR OVERHEAD UTILITIES PRIOR TO COMMENCING CONSTRUCTION. NO REPRESENTATION IS MADE THAT ALL EXISTING UTILITIES ARE SHOWN HEREON. THE ENGINEER ASSUMES NO RESPONSIBILITY FOR UTILITIES NOT SHOWN OR UTILITIES NOT SHOWN IN THEIR PROPER LOCATION. CONTRACTOR TO NOTIFY ENGINEER OF ANY CHANGES OR DISCREPANCIES.

Avoid overhead power line contact. If it is costly, Call before you Overhead
 1-702-227-2929
 Nevada Power Environment and Safety Services Department

Call before you Dig
 1-800-227-2800
 CLARK COUNTY TRAFFIC OPERATIONS
 1-702-455-7544

TRAFFIC CONSTRUCTION NOTES

- SIGNS**
- 1 - INSTALL 1-30" R1-1 STOP SIGN AND 2-9" STREET NAME SIGNS PER PRIVATE STREET STDS
 - 2 - INSTALL 1-36" R1-1 STOP SIGN AND 2-12" STREET NAME SIGNS PER USDOCA No. 250
 - 3 - EXISTING STOP SIGN
 - 4 - INSTALL OM-3R SIGN AT 25' O.C.
 - 5 - EXISTING OM-3R SIGNS TO BE RELOCATED OR RETURNED TO CC TRAFFIC OPS
 - 6 - RELOCATE 35 MPH SIGNS
 - 7 - RELOCATE 25 MPH SIGNS
 - 8 - EXISTING SCHOOL SIGN TO REMAIN IN PLACE
 - 9 - REMOVE EXISTING END OF ROAD BARRICADES
 - 10 - RELOCATE STOP SIGN AND STREET NAME SIGNS
 - 11 - INSTALL OM-3R SIGN AT 35' O.C.
 - 12 - INSTALL BIKE LANE SIGN R3-17
 - 13 - INSTALL R9-3A NO PARKING SIGN

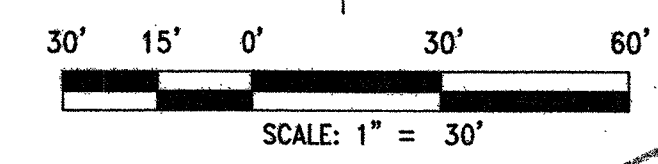


STREETLIGHTS

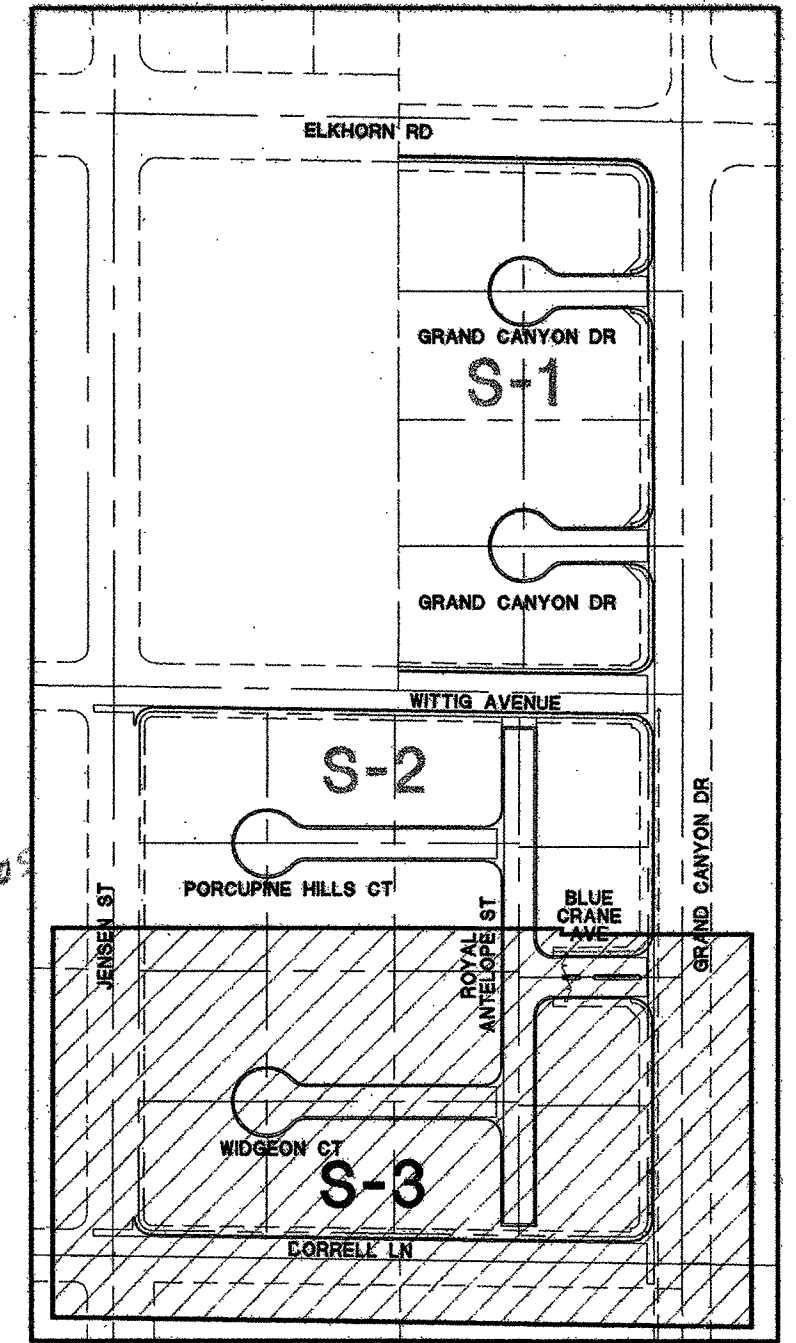
- 30 - INSTALL 1-1/4" PVC STREETLIGHT CONDUIT WITH PULL STRING
- 31 - INSTALL No. 3 1/2 PULL BOX PER USDOCA No. 326
- 32 - INSTALL 4" FIBER OPTIC CONDUIT WITH #8 TRACER WIRE AND PULL CORD IN THE CONDUIT
- 33 - INSTALL P30 PULL BOX WITH "FIBER OPTIC" INSCRIBED ON LID PER USDOCA No. 761
- 34 - INSTALL 82W STREET LIGHT
- 35 - INSTALL 130W STREET LIGHT
- 36 - INSTALL TWO 130W LED STREET LIGHTS AND RELATED APPETENCIES FOR SIGNALIZED INTERSECTION PER USDOCA No. 889 (1 OF 2) WITH 200 AMP SERVICE PEDESTAL AND TYPE R CABINET
- 37 - INSTALL 125 AMP PRIVATE WALL MOUNTED SERVICE

PAVEMENT MARKINGS AND MISCELLANEOUS

- 60 - INSTALL BLUE COLORED REFLECTIVE RAISED PAVEMENT MARKERS ADJACENT TO THE FIRE HYDRANT ON ALL IMPROVED FIRE APPARATUS ACCESS ROADWAYS WITH HARD SURFACE, INCLUDING BOTH PUBLIC AND PRIVATE ROADS, OR FIRE LANES
- 61 - PAINT CURB RED IN FRONT OF FIRE HYDRANT
- 62 - INSTALL 8" WIDE PAINTED EDGELINE
- 63 - INSTALL 6" WIDE PAINTED EDGELINE
- 64 - INSTALL 4" WIDE PAINTED EDGELINE
- 65 - EXISTING CROSS WALK MARKINGS
- 66 - EXISTING TRANSITION PAVEMENT MARKINGS PER USDOCA No. 245
- 67 - INSTALL TYPE 2 CENTERLINE DELINEATION PER USDOCA No. 244
- 68 - EXISTING EDGELINE PAVEMENT MARKINGS
- 69 - EXISTING TYPE 1 CENTERLINE
- 70 - INSTALL 2" WIDE PAINTED STOP BAR PER USDOCA No.254
- 71 - INSTALL CROSSWALK MARKINGS PER USDOCA No.259
- 72 - INSTALL TYPE 4 LANE LINE PER USDOCA No.244.1
- 73 - REMOVE EXISTING LANE LINES THROUGH INTERSECTION (BCR TO BCR)
- 74 - EXISTING LANE LINES TO REMAIN IN PLACE
- 75 - EXISTING BIKE LANE LINE TO REMAIN IN PLACE
- 76 - INSTALL BIKE LANE STRIPE 6" WIDE



*AS-BUILT PER PLAN 9/20/15
 D. Clark
 Dean Chonko*



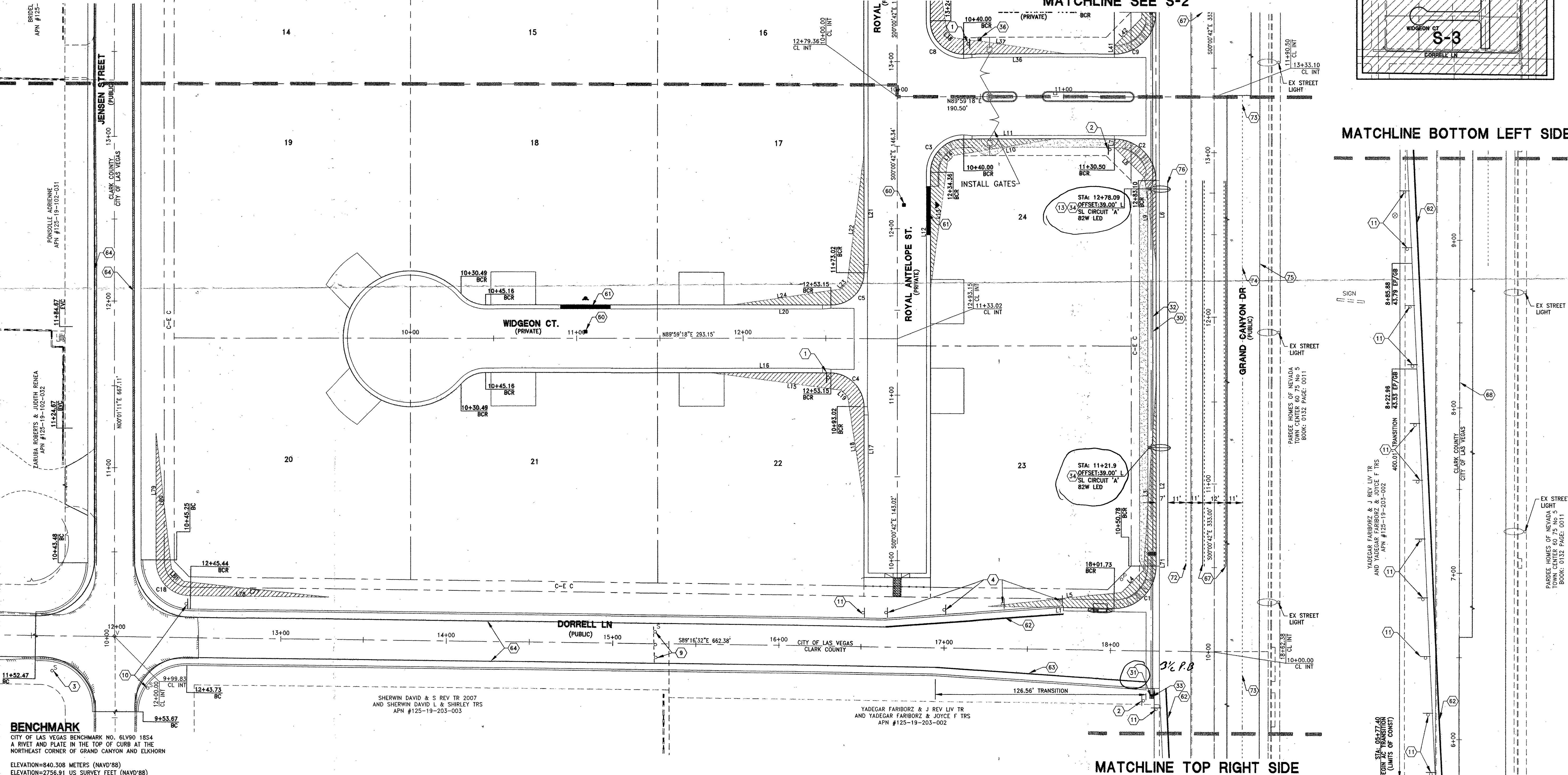
DATE	DESCRIPTION	BY	DATE
September 20, 2014			
HORIZ. SCALE: 1"=30'			
VERT. SCALE: N/A			
DRAWN BY: CR			
DESIGNED BY: SC			
CHECKED BY: JIL			
APPROVED BY: JIL			
PROJECT #:			3110.007

MATCHLINE SEE S-2

MATCHLINE SEE S-2

MATCHLINE BOTTOM LEFT SIDE

MATCHLINE TOP RIGHT SIDE



BENCHMARK
 CITY OF LAS VEGAS BENCHMARK NO. 61V90 1854
 A RIVET AND PLATE IN THE TOP OF CURB AT THE
 NORTHEAST CORNER OF GRAND CANYON AND ELKHORN
 ELEVATION=840.308 METERS (NAVD'88)
 ELEVATION=2756.91 US SURVEY FEET (NAVD'88)

BASIS OF BEARINGS
 N 0°00'21" W, BEING THE EAST LINE OF THE SOUTHWEST QUARTER (SE 1/4) OF THE SOUTHWEST QUARTER (SW 1/4) OF SECTION 18, TOWNSHIP 19 SOUTH, RANGE 60 EAST, M.D.M., AS SHOWN THAT CERTAIN MAP IN FILE 82, PAGE 20, OF PARCEL MAPS ON FILE IN THE COUNTY RECORDERS OFFICE, CLARK COUNTY, NEVADA.

TOLL NORTH LY, LLC
 1140 TOWN CENTER BOULEVARD, SUITE 250
 LAS VEGAS, NV 89144
 PHONE: 702-245-8800 FAX: 702-245-4610

IMPROVEMENT PLANS FOR
SAVONA UNIT 3
 A SINGLE FAMILY RESIDENTIAL SUBDIVISION
STREET LIGHT, SIGNAGE, & STRIPING PLAN
 (SHEET 3 OF 3)

JOHN I. LAND
 CIVIL ENGINEER
 Exp. 12/31/2015
 No. 16441
 9/20/2014

S-3
 SHEET 35 OF 35
 DWG # 10745003
 CLV PROJECT # 052625

C:\3110_Toll\0007_Savona\Civil\PS\unit 3\8008_S-1.dwg gllano 9/20/14 2:36pm