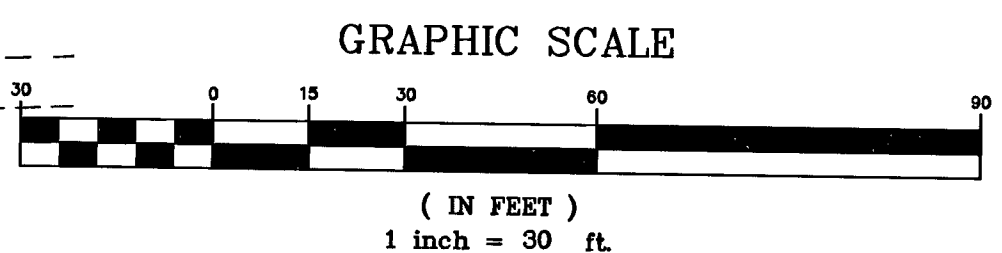
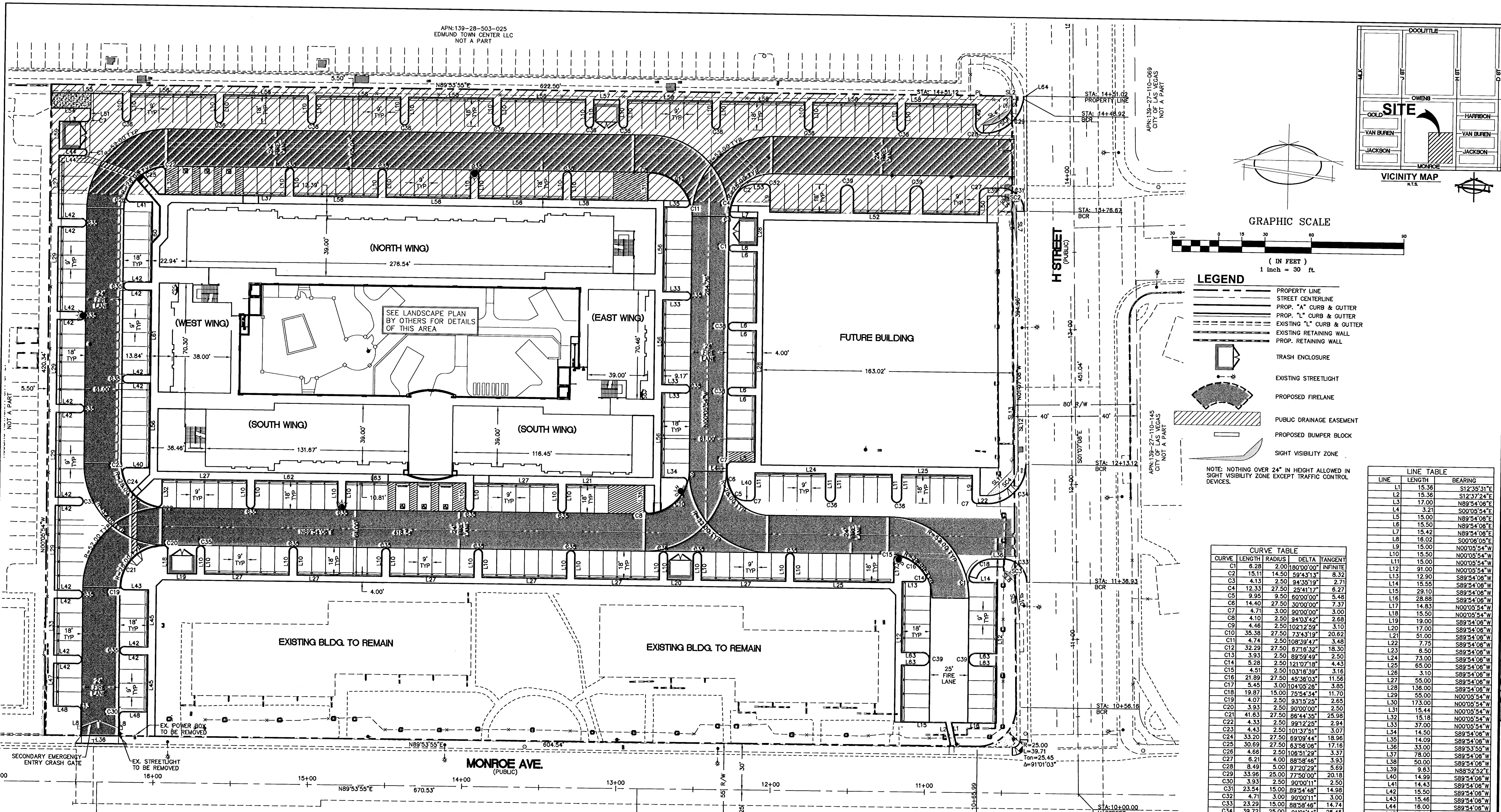


APN: 139-28-503-025
EDMUND TOWN CENTER LLC
NOT A PART



LEGEND

- PROPERTY LINE
- STREET CENTERLINE
- PROP. "A" CURB & GUTTER
- PROP. "L" CURB & GUTTER
- EXISTING "L" CURB & GUTTER
- EXISTING RETAINING WALL
- PROP. RETAINING WALL
- TRASH ENCLOSURE
- EXISTING STREETLIGHT
- PROPOSED FIRELANE
- PUBLIC DRAINAGE EASEMENT
- PROPOSED BUMPER BLOCK
- SIGHT VISIBILITY ZONE

NOTE: NOTHING OVER 24" IN HEIGHT ALLOWED IN SIGHT VISIBILITY ZONE EXCEPT TRAFFIC CONTROL DEVICES.

CURVE TABLE

CURVE	LENGTH	RADIUS	DELTA	TANGENT
C1	6.28	2.00	180°00'00"	INFINITE
C2	15.11	14.50	59°43'13"	8.32
C3	4.13	2.50	94°35'19"	2.71
C4	12.33	27.50	25°41'17"	6.27
C5	9.95	9.50	60°00'00"	5.48
C6	14.40	27.50	50°00'00"	7.37
C7	4.71	3.00	90°00'00"	3.00
C8	4.10	2.50	94°03'42"	2.68
C9	4.46	2.50	102°12'59"	3.10
C10	35.38	27.50	73°43'19"	20.62
C11	4.74	2.50	108°39'47"	3.48
C12	32.29	27.50	67°16'32"	18.30
C13	3.93	2.50	89°59'48"	2.50
C14	5.28	2.50	121°17'18"	4.43
C15	4.51	2.50	103°16'39"	3.16
C16	21.89	27.50	45°36'03"	11.56
C17	5.45	3.00	104°05'26"	3.85
C18	19.87	15.00	75°54'34"	11.70
C19	4.07	2.50	93°15'25"	2.65
C20	3.93	2.50	90°00'00"	2.50
C21	41.63	27.50	85°44'35"	25.98
C22	4.33	2.50	99°12'25"	2.94
C23	4.43	2.50	101°37'51"	3.07
C24	33.20	27.50	69°09'44"	18.96
C25	30.69	27.50	63°56'06"	17.16
C26	4.66	2.50	106°51'29"	3.37
C27	6.21	2.50	89°58'46"	3.63
C28	8.49	5.00	89°58'46"	5.69
C29	33.96	25.00	77°50'00"	20.18
C30	3.93	2.50	90°00'11"	2.50
C31	23.54	15.00	89°54'48"	14.98
C32	4.71	3.00	90°00'11"	3.00
C33	23.28	15.00	88°58'46"	14.74
C34	39.72	25.00	91°01'14"	25.45
C35	7.85	2.50	180°00'00"	INFINITE
C36	7.85	2.50	79°48'54"	INFINITE
C37	9.42	3.00	180°00'00"	INFINITE
C38	7.35	2.50	180°00'00"	INFINITE
C39	12.57	4.00	180°00'00"	INFINITE

LINE TABLE

LINE	LENGTH	BEARING
L1	15.36	S12°35'31"E
L2	15.36	S12°37'24"E
L3	17.00	N89°54'06"E
L4	3.21	S00°05'54"E
L5	15.00	N89°54'06"E
L6	15.50	N89°54'06"E
L7	15.42	N89°54'06"E
L8	18.02	S00°05'54"E
L9	15.00	N00°05'54"W
L10	15.50	N00°05'54"W
L11	15.00	N00°05'54"W
L12	91.00	N00°05'54"W
L13	12.90	S89°54'06"W
L14	15.55	S89°54'06"W
L15	29.10	S89°54'06"W
L16	28.88	S89°54'06"W
L17	14.83	N00°05'54"W
L18	15.50	S89°54'06"W
L19	19.00	S89°54'06"W
L20	17.00	S89°54'06"W
L21	51.00	S89°54'06"W
L22	7.75	S89°54'06"W
L23	6.50	S89°54'06"W
L24	73.00	S89°54'06"W
L25	65.00	S89°54'06"W
L26	3.10	S89°54'06"W
L27	55.00	S89°54'06"W
L28	136.00	S89°54'06"W
L29	55.00	N00°05'54"W
L30	173.00	N00°05'54"W
L31	15.44	N00°05'54"W
L32	15.18	N00°05'54"W
L33	37.00	N00°05'54"W
L34	14.50	N00°05'54"W
L35	14.09	S89°54'06"W
L36	33.00	S89°53'55"W
L37	78.00	S89°54'06"W
L38	50.00	S89°54'06"W
L39	9.63	N88°52'52"E
L40	14.99	S89°54'06"W
L41	14.43	S89°54'06"W
L42	14.50	S89°54'06"W
L43	15.46	S89°54'06"W
L44	16.00	S89°54'06"W
L45	37.00	N00°05'54"W
L46	172.00	N00°05'54"W
L47	28.00	N00°05'54"W
L48	15.50	N00°05'54"W
L49	13.45	N00°05'54"W
L50	13.23	N00°05'54"W
L51	5.32	N00°05'54"W
L52	136.00	S89°53'55"W
L53	6.50	S89°53'55"W
L54	25.50	S89°53'55"W
L55	46.50	S89°53'55"W
L56	55.00	S89°53'55"W
L57	17.00	S89°53'55"W
L58	46.00	S89°53'55"W
L59	18.00	N00°05'54"W
L60	52.00	N00°05'54"W
L61	55.13	N00°05'54"W
L62	54.00	S89°54'06"W
L63	78.00	S89°54'06"W
L64	2.00	N00°00'00"W
L65	14.00	N00°05'54"W
L63	14.00	S89°54'06"W

SVZ LINE TABLE

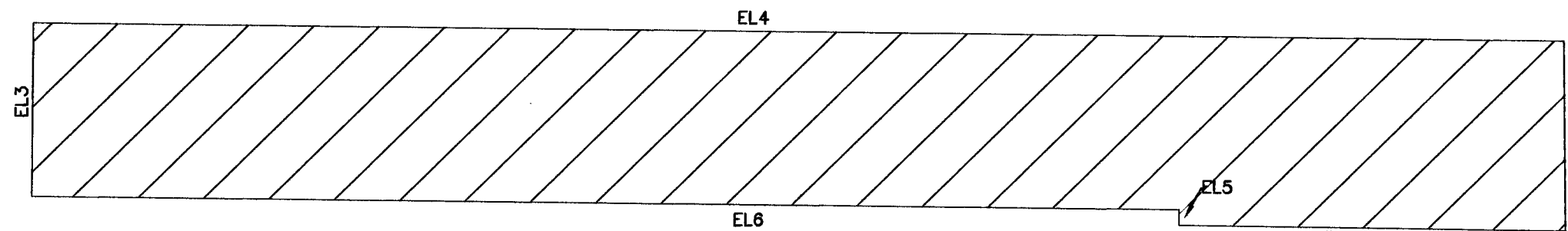
LINE	LENGTH	BEARING
L1	8.26	N01°07'08"W
L2	1.46	S89°53'55"W
L3	9.28	S01°58'11"W
L4	20.54	S82°19'32"W
L5	9.27	S46°09'44"E
L6	23.73	S09°58'03"E
L7	20.02	N01°43'38"W
L8	9.65	S45°36'31"E
L9	23.59	S09°16'41"E
L10	22.87	S44°23'29"W
L11	23.01	N07°59'36"W
L12	69.65	N00°52'00"W
L13	73.65	S02°11'24"W

EASEMENT LINE TABLE

LINE	LENGTH	BEARING
EL1	157.38	S89°54'06"W
EL2	77.29	S01°07'08"E
EL3	70.53	N00°05'54"W
EL4	622.50	N89°53'55"E
EL5	6.44	N00°05'54"W
EL6	466.50	S89°54'06"W

SVZ CURVE TABLE

CURVE	LENGTH	RADIUS	TANGENT	DELTA
C1	24.19	20.00	13.82	69°17'18"
C2	15.69	10.00	9.98	89°54'48"
C3	11.65	7.50	7.37	88°58'46"
C4	31.77	20.00	20.36	91°01'14"



BENCHMARK
CITY OF LAS VEGAS BENCHMARK NO. 1092 T20S, R61E
2 1/2" DIAMETER RIVET AND PLATE IN TOP OF CURB @ NW CORNER OF H ST & MONROE
ELEV: 691.7740 METERS (2033.38 FEET)

BASIS OF BEARING
N00°41'22"W, BEING THE CENTERLINE OF J STREET AS SHOWN ON PARCEL TWO (2) AS SHOWN BY MAP THERE OF IN FILE 87 OF PARCEL MAPS, PAGE 33, IN THE OFFICE OF THE COUNTY RECORDER OF CLARK COUNTY, NEVADA.

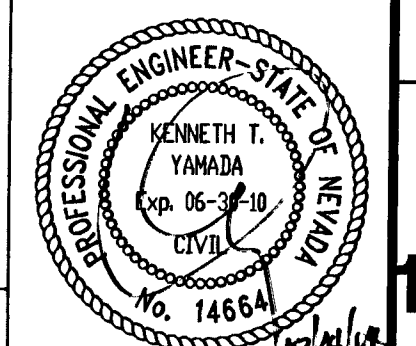
DISCLAIMER NOTE

UTILITY LOCATIONS SHOWN HEREON ARE APPROXIMATE ONLY. IT SHALL BE THE CONTRACTOR'S RESPONSIBILITY TO DETERMINE THE EXACT HORIZONTAL AND VERTICAL LOCATION OF ALL EXISTING UNDERGROUND AND OVERHEAD UTILITIES PRIOR TO COMMENCING CONSTRUCTION. NO REPRESENTATION IS MADE THAT ALL EXISTING UTILITIES ARE SHOWN HEREON. THE ENGINEER ASSUMES NO RESPONSIBILITY FOR UTILITIES NOT SHOWN OR UTILITIES NOT SHOWN IN THEIR PROPER LOCATION.

Call before you dig
Call before you overheat

1-702-227-2929
NEVADA POWER ENVIRONMENT AND SAFETY SERVICES DEPARTMENT

#28975CLV# 107 V 5134



BAUGHMAN & TURNER, INC.
CIVIL ENGINEERS LAND SURVEYORS LAND PLANNERS
1210 HINSON STREET LAS VEGAS, NEVADA 89102
PHONE: (702) 870-8771 FAX: (702) 878-2695 89102

SARANN KNIGHT
HORIZONTAL CONTROL
SECTION 28, TOWNSHIP 20 SOUTH, RANGE 61 EAST, M.D.B. & M. NEVADA
CITY OF LAS VEGAS
H STREET & MONROE AVE.

DATE: OCTOBER 2008
DESIGN: MY
DRAWN: CR
CHECK: KTY
SCALE: 1:30

PREPARED FOR: EDMUND TOWN CENTER LLC
APN: 139-28-503-025

SHEET **HC1** OF 10
PROJ. NO. C0CPN-SARANN KNIGHT