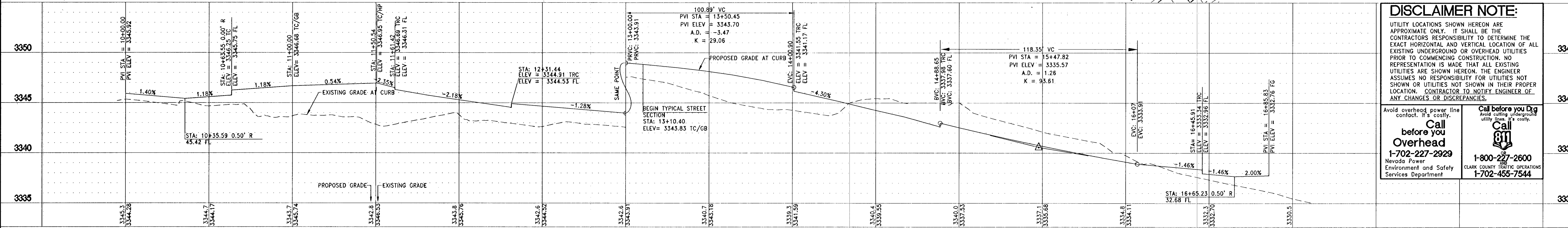


NOTE
 SEE SHEET P-1 FOR CENTERLINE DATA, CURB DATA AND UTILITY PROFILES.

BENCHMARK
 CITY OF LAS VEGAS BENCHMARK No. 7LV09 34C4
 A RIVET AND PLATE IN THE TOP OF CURB AT THE
 NORTHEAST CORNER OF PASEO BREEZE DRIVE AS SHOWN BY MAP
 THEREON ON FILE IN THE CLARK COUNTY RECORDER'S
 OFFICE IN BOOK 121, PAGE 12 OF PLATS
 ELEVATION=997.024 METERS (NAV'D/88)
 ELEVATION=3271.07 US SURVEY FEET (NAV'D/88)

BASIS OF BEARINGS
 SOUTH 85°00'00" WEST BEING THE BEARING OF THE
 CENTERLINE OF PASEO BREEZE DRIVE AS SHOWN BY MAP
 THEREON ON FILE IN THE CLARK COUNTY RECORDER'S
 OFFICE IN BOOK 121, PAGE 12 OF PLATS

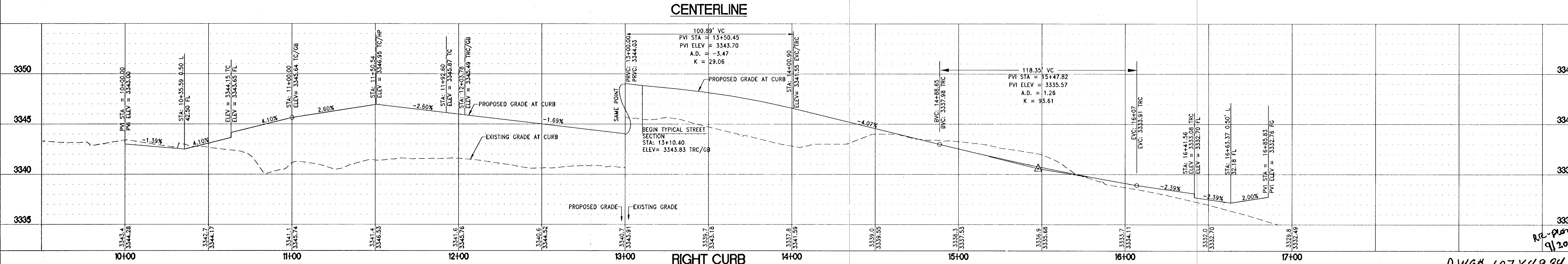
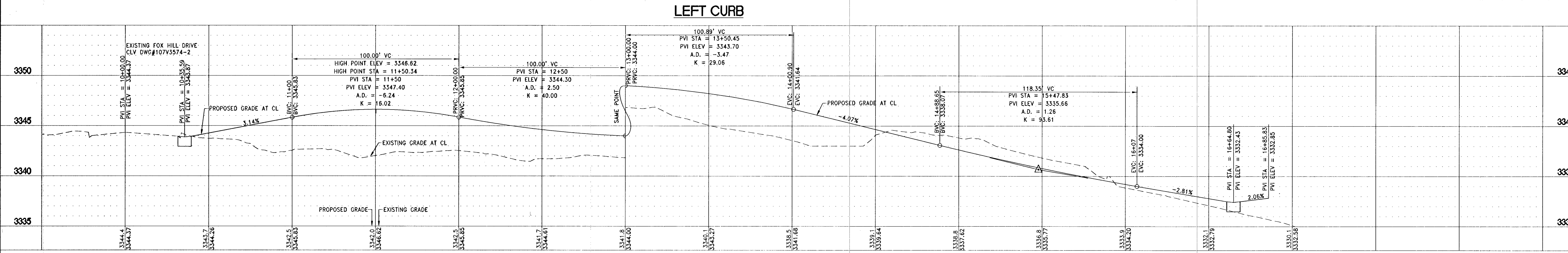
HORIZONTAL SCALE: 1" = 30'
 VERTICAL SCALE: 1" = 5'



DISCLAIMER NOTE:
 UTILITY LOCATIONS SHOWN HEREON ARE APPROXIMATE ONLY. IT SHALL BE THE CONTRACTOR'S RESPONSIBILITY TO DETERMINE THE EXACT HORIZONTAL AND VERTICAL LOCATION OF ALL EXISTING UNDERGROUND OR OVERHEAD UTILITIES PRIOR TO COMMENCING CONSTRUCTION. NO REPRESENTATION IS MADE THAT ALL EXISTING UTILITIES ARE SHOWN HEREON. THE ENGINEER ASSUMES NO RESPONSIBILITY FOR UTILITIES NOT SHOWN OR UTILITIES NOT SHOWN IN THEIR PROPER LOCATION. CONTRACTOR TO NOTIFY ENGINEER OF ANY CHANGES OR DISCREPANCIES.

Avoid overhead power line contact. It's costly.
Call before you Dig
 before you Overhead
 1-702-227-2929
 Nevada Power
 Environment and Safety
 Services Department

Call before you Dig
 Avoid cutting underground utility lines. It's costly.
Call 811
 1-800-227-2600
 CLARK COUNTY Traffic Operations
 1-702-455-7544



REV	DESCRIPTION	BY	APPD	DATE
1	REVISE CE-3 AREA	JL		9/14/2013
2	REVISE SW, RETAINING WALLS, STREET LIGHTS & STORM DRAIN	JL		9/14/2013

TOLL BROTHERS INC.
 1140 TOWN CENTER DRIVE SUITE 250
 PHOENIX, AZ 85016
 PHONE: 702-241-8800 FAX: 702-243-9810

RCI Engineering
 3281 South Highland Drive, Suite 510, Las Vegas, NV 89109
 PHOENIX, AZ 85016 FAX: 702-453-0801

IMPROVEMENT PLANS FOR
SANTALUZ AT SUMMERLIN VILLAGE 23A
PARCELS ES-1 AND WS-1
PLAN AND PROFILE
SANTALUZ LANE

CITY OF LAS VEGAS

9/15/2013

P-8
 SHT 18 OF 39
 CLV PROJECT NUMBER 48167

DWG# 107Y4984

