

DISCLAIMER NOTE:
 UTILITY LOCATIONS SHOWN HEREON ARE APPROXIMATE ONLY. IT SHALL BE THE CONTRACTOR'S RESPONSIBILITY TO DETERMINE THE EXACT HORIZONTAL AND VERTICAL LOCATION OF ALL EXISTING UNDERGROUND OR OVERHEAD UTILITIES PRIOR TO COMMENCING CONSTRUCTION. NO REPRESENTATION IS MADE THAT ALL EXISTING UTILITIES ARE SHOWN HEREON. THE ENGINEER ASSUMES NO RESPONSIBILITY FOR UTILITIES NOT SHOWN OR UTILITIES NOT SHOWN IN THEIR PROPER LOCATION. CONTRACTOR TO NOTIFY ENGINEER OF ANY CHANGES OR DISCREPANCIES.

Avoid overhead power line contact, it's costly.
 Call before you dig
 before you Overhead
 1-702-227-2929
 Nevada Power
 Environment and Safety Services Department

Call before you dig
 Avoid cutting underground utility lines. It's costly.
 Call 811
 1-800-227-2600
 CLARK COUNTY TRAFFIC OPERATIONS
 1-702-455-7344

CONSTRUCTION NOTES

- CONSTRUCT AC PAVEMENT PER DETAILS ON SHEET D-1
- CONSTRUCT 30" ROLL CURB PER CCAUSD # 217.51
- CONSTRUCT 8" CROSS GUTTER PER CCAUSD # 228
- CONSTRUCT 5" SIDEWALK PER CCAUSD # 234
- 5-INCH THICK WHEN CONTIGUOUS TO ROLL CURB
- CONSTRUCT 8" SIDEWALK PER CCAUSD # 234
- CONSTRUCT SIDEWALK RAMPS USING ARMOR TILE TRUNCATED DOMES OR EQUIVALENT PER CCAUSD # 235 (CASE I)
- CONSTRUCT 24" "L" TYPE CURB AND GUTTER PER CCAUSD # 216
- CONSTRUCT 10" CURB TRANSITION FROM "L" CURB TO ROLL CURB
- CONSTRUCT 5' WIDE PEDESTRIAN ACCESS GATE

BENCHMARK

CITY OF LAS VEGAS BENCHMARK No. 7LV09 34C4
 A RIVET AND PLATE IN THE TOP OF CURB AT THE NORTHEAST CORNER OF PASEO MIST DR AND DESERT MOON DR.
 ELEVATION=997.024 METERS (NAVD'88)
 ELEVATION=3271.07 US SURVEY FEET (NAVD'88)

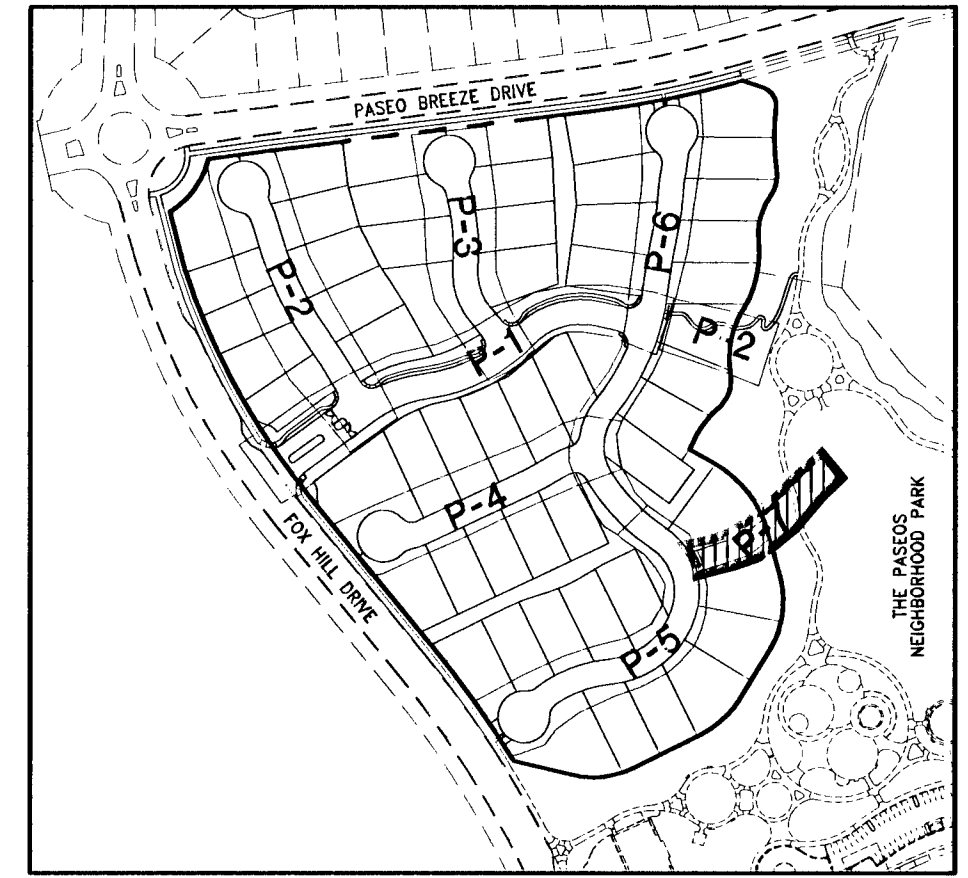
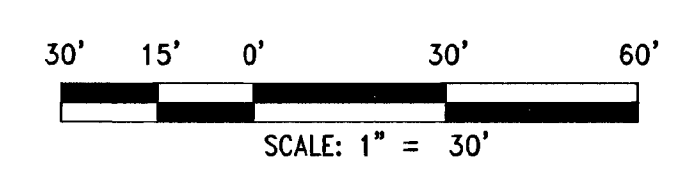
BASIS OF BEARINGS

SOUTH 83°00'00" WEST BEING THE BEARING OF THE CENTERLINE OF PASEO BREEZE DRIVE AS SHOWN BY MAP THEREOF ON FILE IN THE CLARK COUNTY RECORDER'S OFFICE IN BOOK 121, PAGE 12 OF PLATS

STORM DRAIN/SEWER NOTES:

- ALL DROP INLETS TO INCLUDE STORM WATER QUALITY MANAGEMENT STAMP AND SIGN DETAIL PER CCAUSD # 421
- ALL TYPE CM2 DROP INLETS PER CCAUSD # 412.1
- ALL SEWER/STORM DRAINS CROSSING WATER LINES MUST CONFORM TO SECTION 2.22 OF THE UNIFORM DESIGN AND CONSTRUCTION STANDARDS FOR POTABLE WATER SYSTEMS (UDACS) FOR WATER AND STORM MAIN CROSSINGS AND CLEARANCES.

CURVE	DELTA	RADIUS	LENGTH	TANGENT
C15	68°47'32"	100.00'	120.07'	68.46'
C64	68°47'32"	119.50'	143.48'	81.81'
C72	68°47'32"	80.50'	96.65'	55.11'
C73	24°35'51"	319.50'	137.09'	69.62'

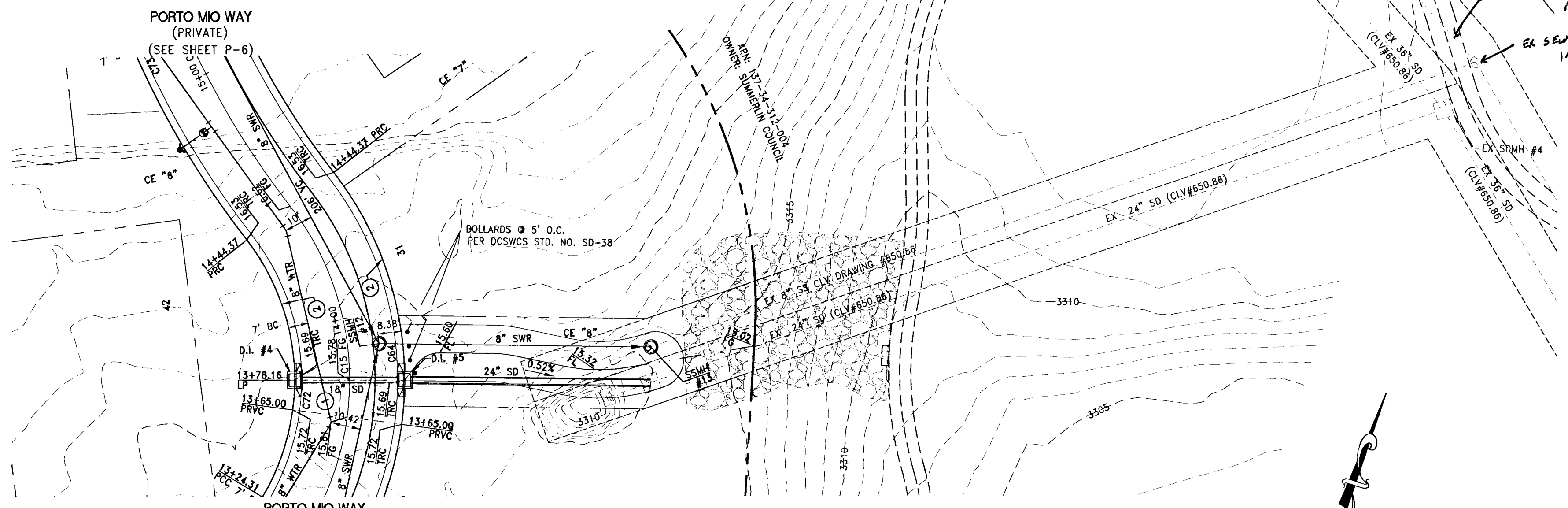


REV	DESCRIPTION	BY	DATE
1	REVISE SW. RETAINING WALLS, STREET LIGHTS & STORM DRAIN	JL	4/20/2013

DATE: April 20, 2013
 HORIZ. SCALE: 1"=30'
 VERT. SCALE: 1/4"=4'
 DRAWN BY: CLT
 DESIGNED BY: JIL
 CHECKED BY: JIL
 APPROVED BY: JIL
 PROJECT #: 3110.0013

TOLL BROTHERS INC.
 1140 TOWN CENTER DRIVE SUITE 250
 LAS VEGAS, NV 89144
 PHONE: 702-245-8800 FAX: 702-245-9510

RCI Engineering
 3281 South Highland Drive, Suite 210, Las Vegas, NV 89109
 Phone: 702.455.0880 Fax: 702.455.0881

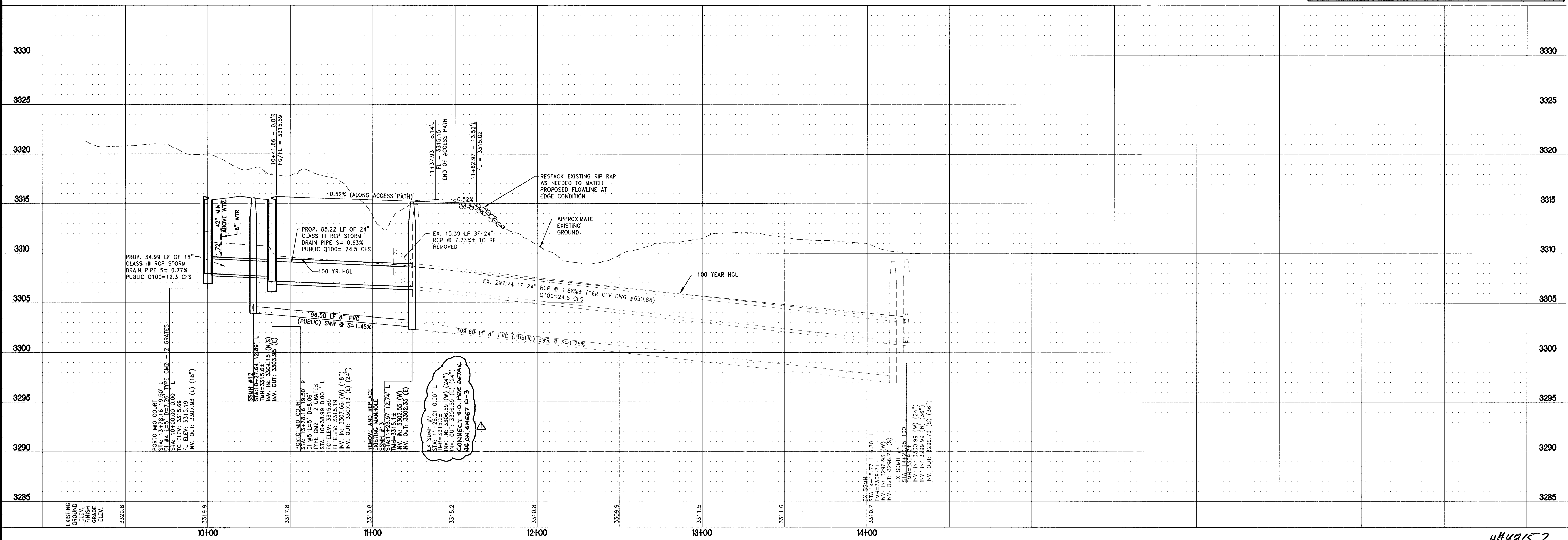


SEE SHEET U-4 FOR SEWER MAIN ABANDONMENT NOTE.
 EX SEWER MANHOLE TO REMAIN IN PLACE. - DO NOT ABANDON.

WATER MAIN JOINT DEFLECTION (PVC 4'-24')
 PVC PIPE SHALL BE DEFLECTED AT THE JOINT ONLY. THE MAXIMUM ALLOWABLE DEFLECTION SHALL BE ONE (1) DEGREE PER JOINT WITH A MINIMUM RADIUS OF CURVATURE OF 1,150 FEET, PER UDACS 2.07.01 AND 2.07.02
 FOR CHANGES IN DIRECTION EXCEEDING THE MAXIMUM ALLOWABLE JOINT DEFLECTION, FITTINGS SHALL BE USED.
 NOTE:
 INSTALL PIPELINE MARKER BALLS IN TRENCH ABOVE EACH HORIZONTAL ELBOW FITTING PER UDACS PLATE NO. 15

APPROVED FOR CONSTRUCTION
Overhead
 LAS VEGAS VALLEY WATER DISTRICT ENGINEERING SERVICES MANAGER
 DATE: 04/22/13 PROJECT # 121254

DROP INLETS #4 AND #5 (PUBLIC)



IMPROVEMENT PLANS FOR
SANTALUZ AT SUMMERLIN VILLAGE 23A
 PARCELS ES-1 AND WS-1
 UTILITY PLAN AND PROFILE
 DROP INLETS #4 AND #5

PROFESSIONAL LAND SURVEYOR
 JOHN I. LAND
 Exp. 12/31/2013
 CIVIL
 No. 16441
 4/20/2013

DRAWING
P-7
 SHT 17 OF 39
 CLV DRAWING NUMBER
10749984
 CLV PROJECT NUMBER #48157

1688
 Rem