

DISCLAIMER NOTE:

UTILITY LOCATIONS SHOWN HEREON ARE APPROXIMATE ONLY. IT SHALL BE THE CONTRACTOR'S RESPONSIBILITY TO DETERMINE THE EXACT HORIZONTAL AND VERTICAL LOCATION OF ALL EXISTING UNDERGROUND OR OVERHEAD UTILITIES PRIOR TO COMMENCING CONSTRUCTION. NO REPRESENTATION IS MADE THAT ALL EXISTING UTILITIES ARE SHOWN HEREON. THE ENGINEER ASSUMES NO RESPONSIBILITY FOR UTILITIES NOT SHOWN OR UTILITIES NOT SHOWN IN THEIR PROPER LOCATION. CONTRACTOR TO NOTIFY ENGINEER OF ANY CHANGES OR DISCREPANCIES.

Avoid overhead power line contact. If a costly.
Call before you Dig
 Call before you Overhead
 1-702-227-2929
 Nevada Power
 Environment and Safety Services Department

CONSTRUCTION NOTES

- CONSTRUCT AC PAVEMENT PER DETAILS ON SHEET D-1
- CONSTRUCT 30" ROLL CURB PER CCAUSD # 217.51
- CONSTRUCT 8' CROSS GUTTER PER CCAUSD # 228
- CONSTRUCT 5' SIDEWALK PER CCAUSD # 234
- 5-INCH THICK WHEN CONTIGUOUS TO ROLL CURB
- CONSTRUCT 8' SIDEWALK PER CCAUSD # 234
- CONSTRUCT SIDEWALK RAMP USING ARMOR TILE TRUNCATED DOMES OR EQUIVALENT PER CCAUSD # 235 (CASE I)
- CONSTRUCT 24" "L" TYPE CURB AND GUTTER PER CCAUSD # 216
- CONSTRUCT 10' CURB TRANSITION FROM "L" CURB TO ROLL CURB
- CONSTRUCT 5' WIDE PEDESTRIAN ACCESS GATE
- CONSTRUCT SIDEWALK RAMP PER SUMMERLIN STD DWG NO.5-75
- CONSTRUCT SIDEWALK RAMP USING ARMOR TILE TRUNCATED DOMES OR EQUIVALENT PER CCAUSD # 235 (CASE II)

BENCHMARK

CITY OF LAS VEGAS BENCHMARK No. 7LV09 34C4
 A RIVET AND PLATE IN THE TOP OF CURB AT THE NORTHEAST CORNER OF PASEO MIST DR AND DESERT MOON DR.

ELEVATION=997.024 METERS (NAVD'88)
 ELEVATION=3271.07 US SURVEY FEET (NAVD'88)

BASIS OF BEARINGS

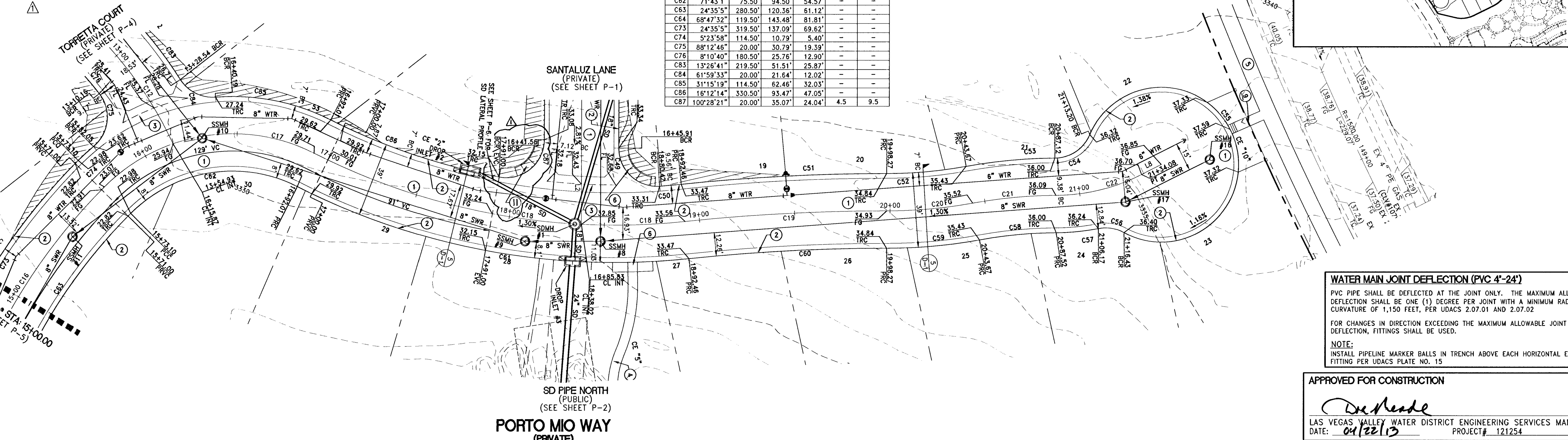
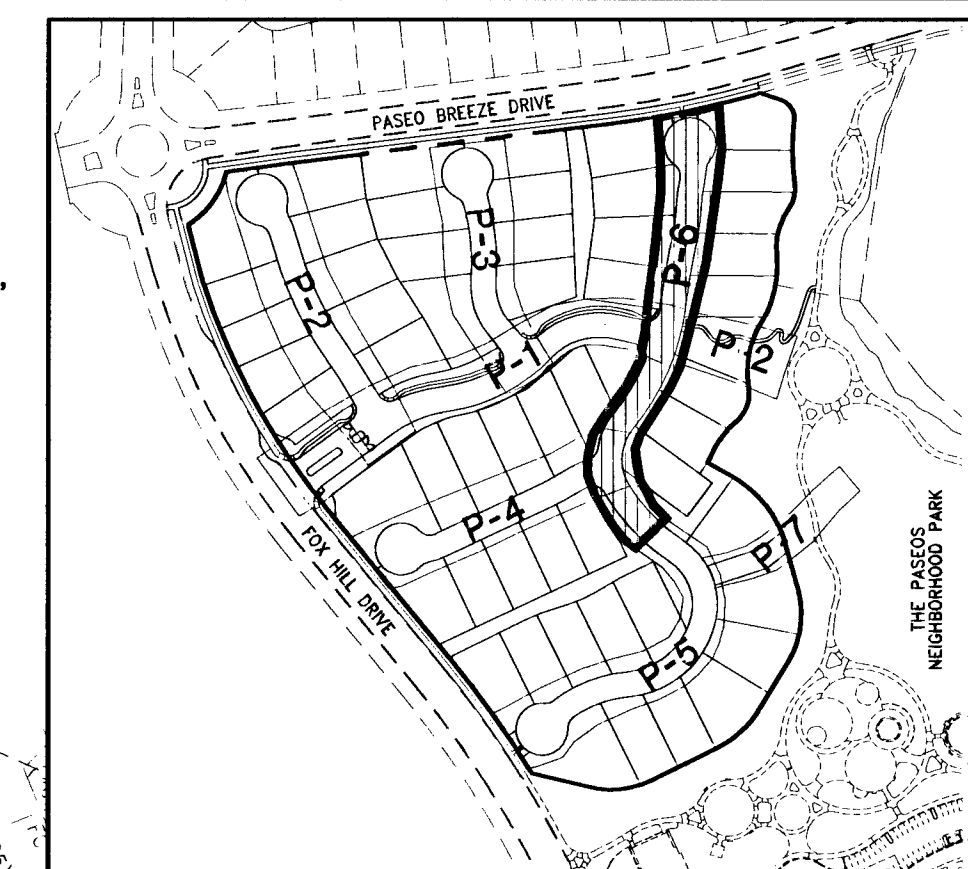
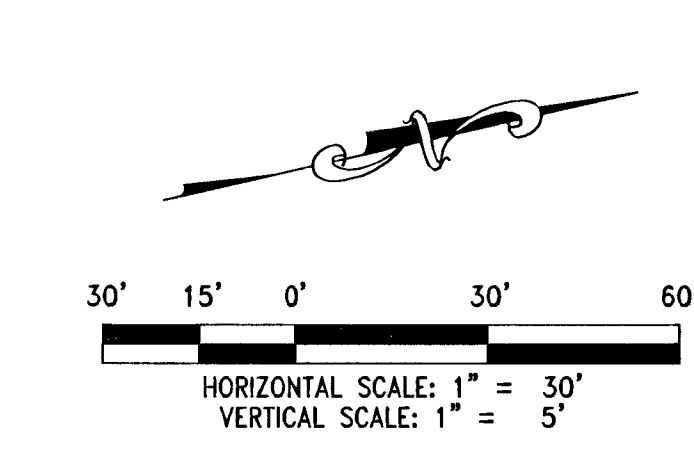
SOUTH 83°00'00" WEST BEING THE BEARING OF THE CENTERLINE OF PASEO BREEZE DRIVE AS SHOWN BY MAP THEREOF ON FILE IN THE CLARK COUNTY RECORDER'S OFFICE IN BOOK 121, PAGE 12 OF PLATS

STORM DRAIN/SEWER NOTES:

- ALL DROP INLETS TO INCLUDE STORM WATER QUALITY MANAGEMENT STAMP AND SIGN DETAIL PER CCAUSD # 421
- ALL TYPE C/W DROP INLETS PER CCAUSD # 412.1
- ALL SEWER/STORM DRAINS CROSSING WATER LINES MUST CONFORM TO SECTION 2.22 OF THE UNIFORM DESIGN AND CONSTRUCTION STANDARDS FOR POTABLE WATER SYSTEMS (UDACS) FOR WATER AND STORM MAIN CROSSINGS AND CLEARANCES.

CURVE TABLE		CURVE TABLE		CURVE TABLE	
CURVE	DELTA	RADIUS	LENGTH	TANGENT	"A" "B"
C16	24°35'5"	300.00	128.73	65.37	- -
C17	71°43'1"	95.00	118.91	68.66	- -
C18	32°48'49"	350.00	200.45	103.06	- -
C19	6°34'45"	1000.00	105.81	52.96	- -
C20	102°41'0"	250.00	45.20	22.75	- -
C21	10°3'2"	250.00	43.85	21.98	- -
C22	26°40'33"	100.00	46.56	23.71	- -
C49	94°10'1"	20.00	32.87	21.51	8.0 8.0
C50	1°58'12"	330.50	11.36	5.68	- -
C51	6°34'45"	1019.50	107.87	53.99	- -
C52	102°41'0"	230.50	41.86	20.99	- -
C53	9°27'30"	269.50	46.84	23.48	- -
C54	66°52'25"	20.00	23.34	13.21	- -
C55	27°58'44"	40.50	195.08	36.48	- -
C56	39°41'58"	20.00	13.86	7.22	- -
C57	10°41'10"	119.50	22.29	11.18	- -
C58	10°3'2"	230.50	40.43	20.27	- -
C59	102°41'0"	269.50	48.94	24.54	- -
C60	6°34'45"	980.50	103.75	51.92	- -
C61	32°48'49"	369.50	211.61	108.80	- -
C62	71°43'1"	75.50	94.50	54.57	- -
C63	24°35'5"	280.50	120.36	61.12	- -
C64	68°47'32"	119.50	143.48	81.81	- -
C73	24°35'5"	319.50	137.09	69.62	- -
C74	5°23'58"	114.50	10.79	5.40	- -
C75	88°12'46"	20.00	30.79	19.39	- -
C76	81°04'0"	180.50	25.76	12.90	- -
C83	13°26'41"	219.50	51.51	25.87	- -
C84	61°59'33"	20.00	21.64	12.02	- -
C85	31°15'19"	114.50	62.46	32.03	- -
C86	18°12'14"	330.50	93.47	47.05	- -
C87	100°28'21"	20.00	35.07	24.04	4.5 9.5

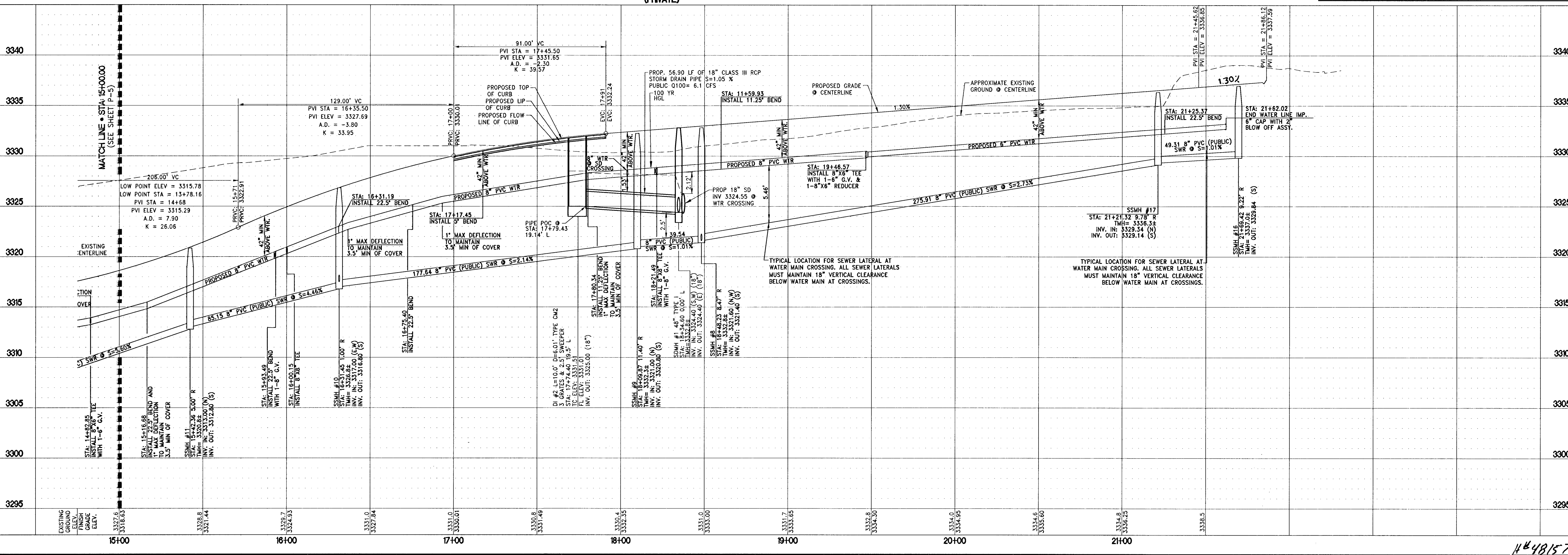
LINE TABLE		
LINE	BEARING	LENGTH
LB	N 14°16'30" W	11.55'



WATER MAIN JOINT DEFLECTION (PVC 4'-24")
 PVC PIPE SHALL BE DEFLECTED AT THE JOINT ONLY. THE MAXIMUM ALLOWABLE DEFLECTION SHALL BE ONE (1) DEGREE PER JOINT WITH A MINIMUM RADIUS OF CURVATURE OF 1,150 FEET, PER UDACS 2.07.01 AND 2.07.02
 FOR CHANGES IN DIRECTION EXCEEDING THE MAXIMUM ALLOWABLE JOINT DEFLECTION, FITTINGS SHALL BE USED.
 NOTE:
 INSTALL PIPELINE MARKER BALLS IN TRENCH ABOVE EACH HORIZONTAL ELBOW FITTING PER UDACS PLATE NO. 15

APPROVED FOR CONSTRUCTION

 LAS VEGAS VALLEY WATER DISTRICT ENGINEERING SERVICES MANAGER
 DATE: 01/22/13 PROJECT # 121254



TOLL BROTHERS INC.
 1140 TOWN CENTER DRIVE SUITE 250
 LAS VEGAS, NV 89144
 PHONE: 702-243-9800 FAX: 702-243-9810

RCI Engineering
 3281 South Highland Drive, Suite 810, Las Vegas, NV 89109
 PH702.453.0800 FAX702.453.0801

IMPROVEMENT PLANS FOR
SANTALUZ AT SUMMERLIN VILLAGE 23A
PARCELS ES-1 AND WS-1
UTILITY PLAN AND PROFILE - PORTO MIO WAY
 FROM STA: 15+00.00 TO STA: 21+45.63

CITY OF LAS VEGAS

DATE: April 26, 2013
 HORIZ. SCALE: 1"=30'
 VERT. SCALE: 1"=5'
 DRAWN BY: JIL
 DESIGNED BY: JIL
 CHECKED BY: JIL
 APPROVED BY: JIL
 PROJECT #: 3110.0013

REV. DESCRIPTION
 BY APD DATE

1687
 26m

420103
P-6
 SHEET 16 OF 39
 CLV DRAWING NUMBER
 10744984
 CLV PROJECT NUMBER #48157