

DISCLAIMER NOTE:

UTILITY LOCATIONS SHOWN HEREON ARE APPROXIMATE ONLY. IT SHALL BE THE CONTRACTOR'S RESPONSIBILITY TO DETERMINE THE EXACT HORIZONTAL AND VERTICAL LOCATION OF ALL EXISTING UNDERGROUND OR OVERHEAD UTILITIES PRIOR TO COMMENCING CONSTRUCTION. NO REPRESENTATION IS MADE THAT ALL EXISTING UTILITIES ARE SHOWN HEREON. THE ENGINEER ASSUMES NO RESPONSIBILITY FOR UTILITIES NOT SHOWN OR UTILITIES NOT SHOWN IN THEIR PROPER LOCATION. CONTRACTOR TO NOTIFY ENGINEER OF ANY CHANGES OR DISCREPANCIES.

Avoid overhead power line contact. It's costly.
Call before you Dig
 Call before you Overhead
 1-702-227-2929
 Nevada Power
 Environment and Safety Services Department

Call before you Dig
 Avoid cutting underground utility lines. It's costly.
Call 811
 1-800-227-2600
 CLARK COUNTY PUBLIC UTILITIES DEPARTMENT
 1-702-455-7544

CONSTRUCTION NOTES

- CONSTRUCT AC PAVEMENT PER DETAILS ON SHEET D-1
- CONSTRUCT 30" ROLL CURB PER SUMMERLIN STD DWG NO. S-48
- CONSTRUCT 8" CROSS GUTTER PER SUMMERLIN STD DWG NO. S-64
- CONSTRUCT 5" SIDEWALK PER CCAUSD # 234
- 5-INCH THICK WHEN CONTIGUOUS TO ROLL CURB
- CONSTRUCT 8" SIDEWALK PER CCAUSD # 234
- CONSTRUCT SIDEWALK RAMPS USING ARMOR TILE TRUNCATED DOMES OR EQUIVALENT PER CCAUSD # 235 (CASE I)
- CONSTRUCT 24" "L" TYPE CURB AND GUTTER PER CCAUSD # 216
- CONSTRUCT 10' CURB TRANSITION FROM "L" CURB TO ROLL CURB
- CONSTRUCT 5' WIDE PEDESTRIAN ACCESS GATE PER DETAIL 41 SHEET D-3
- CONSTRUCT SIDEWALK RAMP PER SUMMERLIN STD DWG NO. S-75
- CONSTRUCT SIDEWALK RAMPS USING ARMOR TILE TRUNCATED DOMES OR EQUIVALENT PER CCAUSD # 235 (CASE II)

BUILDING PERMIT NOTE

ALL STRUCTURES SHOWN OR INDICATED ON THIS SUBMITTAL WITHIN THE PROPERTY REQUIRE A BUILDING PERMIT APPLICATION AND SUBMITTAL THIS INCLUDES BUILDINGS, ABOVE GROUND TANKS, SIGNS, RETAINING WALLS, FENCES, TRASH ENCLOSURES, SHADE STRUCTURES, STAIRWAYS, RAMPS, LIGHT POLES, LIGHT BOLLARDS, ETC. THIS DOES NOT INCLUDE ANY WORK WITHIN A PUBLIC STREET RIGHT-OF-WAY. THIS DOES NOT INCLUDE PRIVATE STREETS. THE REVIEW OF CIVIL IMPROVEMENT AND/OR GRADING PLANS DOES NOT INCLUDE ANY REVIEW OF ANY STRUCTURE THAT REQUIRES A BUILDING PERMIT APPLICATION.

DROP INLET TABLE

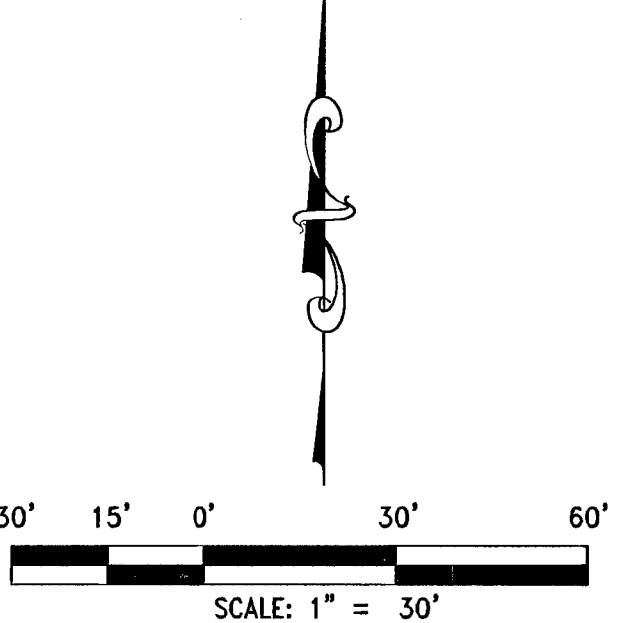
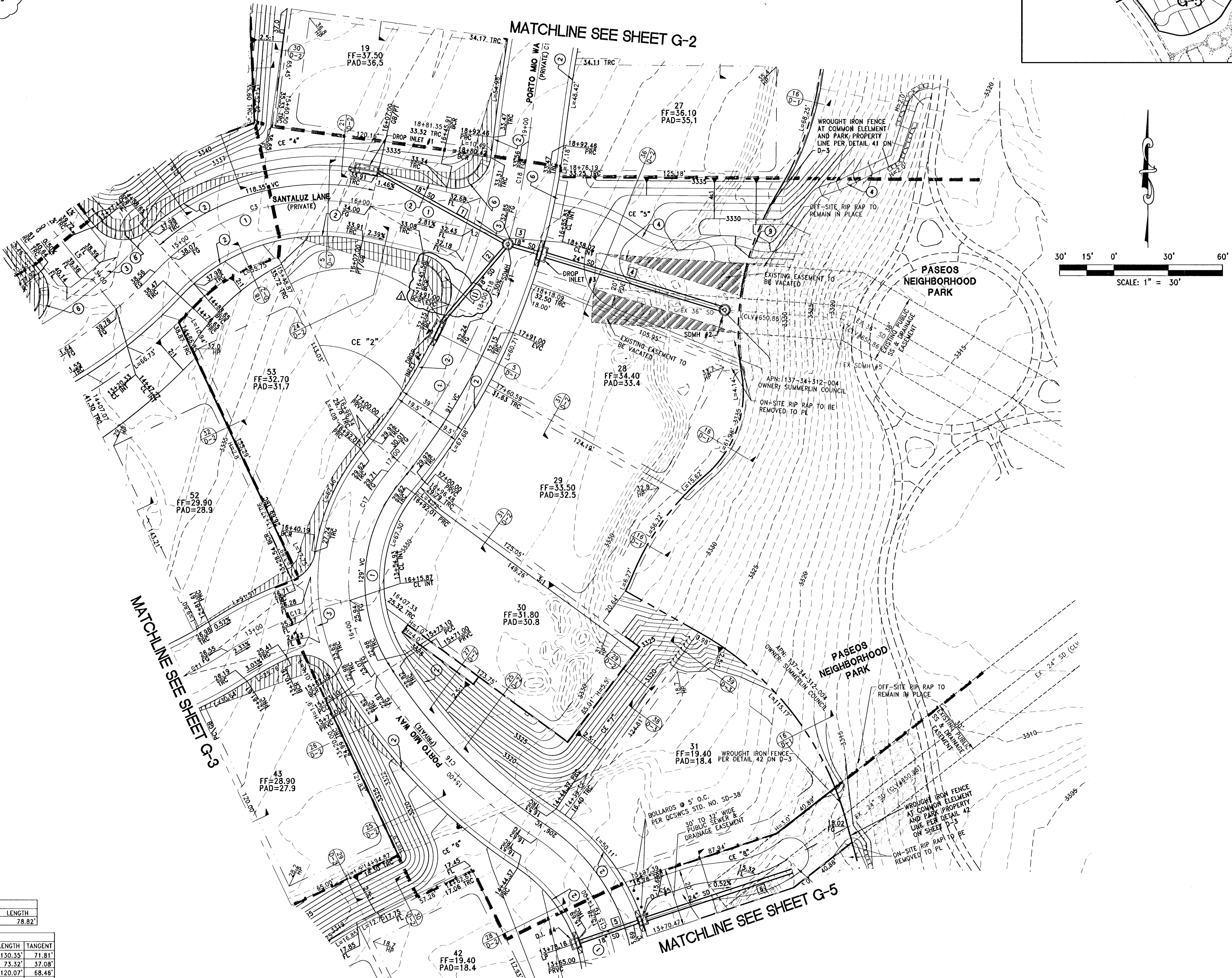
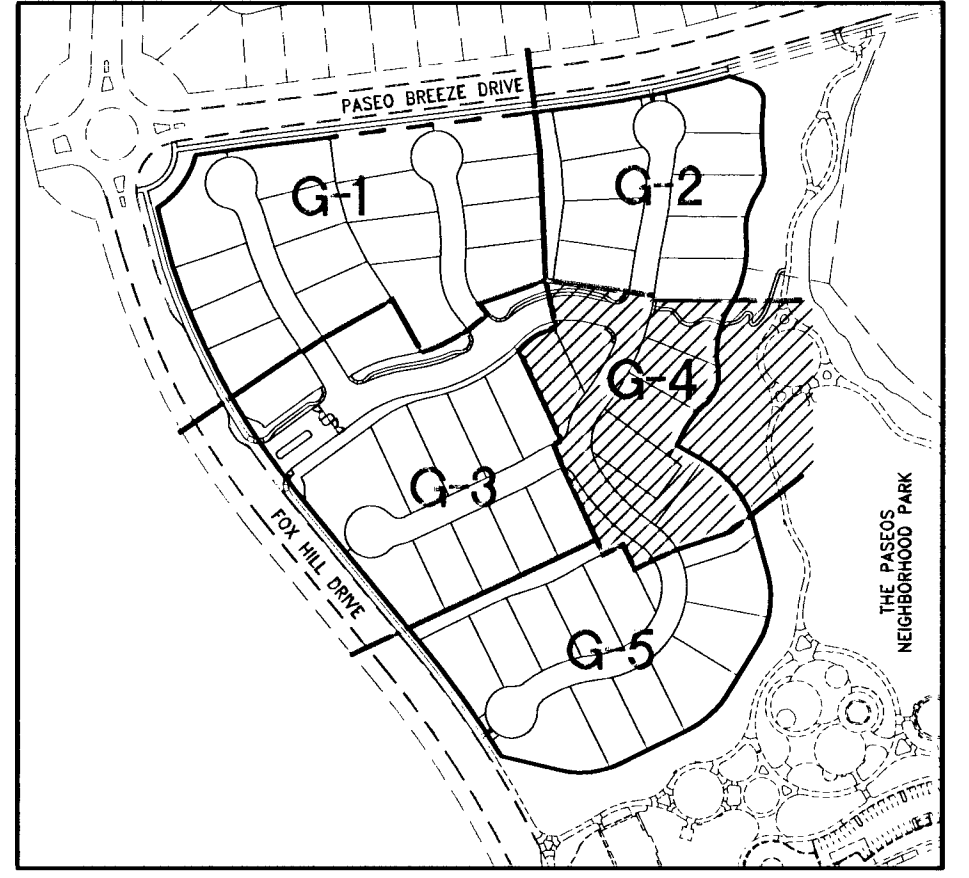
DI #	TYPE	"D"	"W"	STATION	OFFSET
1	CM2	8.12'	8"	16+01.23	19.5' L
2	CM2	6.01'	8"	17+74.40	19.5' L
3	CM2	8.51'	8"	17+05.11	4.56' R
4	CM2	7.26'	8"	15+78.16	19.5' L
5	CM2	8.08'	8"	13+78.16	19.5' R

STORM DRAIN MANHOLE TABLE

MH #	SIZE	TYPE	STATION	OFFSET
1	48"	I	16+85.64	3.42' R
2	60"	II	18+10.54	12.09' R

STORM DRAIN PIPE TABLE

PIPE #	PIPE SIZE	SLOPE	TYPE	PUBLIC/PRIVATE
1	18"	1.27%	CLASS III RCP	PUBLIC
2	18"	1.05%	CLASS III RCP	PUBLIC
3	18"	1.14%	CLASS III RCP	PUBLIC
4	24"	0.77%	CLASS III RCP	PUBLIC
5	18"	0.77%	CLASS III RCP	PUBLIC
6	24"	0.63%	CLASS III RCP	PUBLIC



FLOOD ZONE NOTE

ACCORDING TO THE FEMA FLOOD INSURANCE RATE MAP (FIRM) COMMUNITY PANEL NUMBER 32003C2150F DATED SEPTEMBER 27, 2002, THE SITE IS LOCATED IN A ZONE "X".

BENCHMARK

CITY OF LAS VEGAS BENCHMARK No. 7LV09 34C4
 A RIVET AND PLATE IN THE TOP OF CURB AT THE NORTHEAST CORNER OF PASEO MIST DR AND DESERT MOON DR.

BASIS OF BEARINGS

SOUTH 83°00'00" WEST BEING THE BEARING OF THE CENTERLINE OF PASEO BREEZE DRIVE AS SHOWN BY MAP THEREOF ON FILE IN THE CLARK COUNTY RECORDER'S OFFICE IN BOOK 121, PAGE 12 OF PLATS

SIGHT VISIBILITY ZONE

NO STRUCTURE, VEGETATION, OR OBJECTS OF ANY KIND IS PERMITTED OVER TWENTY-FOUR (24) INCHES IN HEIGHT (MEASURED FROM THE TOP OF THE ADJACENT CURB IF CURB EXISTS) WITHIN THE SIGHT VISIBILITY ZONES.

ENGINEERS NOTES

- CONTRACTOR IS RESPONSIBLE FOR DUST AND EROSION CONTROL DURING CONSTRUCTION.
- SEE DETAIL SHEET FOR ON-SITE PAVEMENT SECTIONS. CONTRACTOR TO VERIFY WITH SOILS REPORT.
- SEE FINAL MAP FOR EXACT PROPERTY LINE DIMENSIONS.
- ENGINEER TO BE NOTIFIED OF ANY DISCREPANCIES IMMEDIATELY.
- THESE PLANS SHALL NOT, IN PART OR IN WHOLE, BE USED FOR CONSTRUCTION UNTIL APPROVED AND SIGNED BY THE GOVERNING AGENCIES.
- ALL GRADING SHALL CONFORM TO SOILS REPORT RECOMMENDATIONS.
- DURING CONSTRUCTION, SURVEYORS AND CONTRACTORS MUST VERIFY THAT ALL STREETS AND LOTS HAVE POSITIVE DRAINAGE. SAME MUST UTILIZE AT LEAST THREE GRADES ON VERTICAL TANGENTS TO VERIFY SLOPES.
- SOIL REPORT NOTE:
 GRADING SHALL BE IN ACCORDANCE WITH SOILS REPORT PREPARED BY:
 ENGINEER: NOVA GEOTECHNICAL & INSPECTION SERVICES
 PROJECT NO. E-12-044
 DATED: MAY 25, 2012
- CUT/FILL ESTIMATES
 EXISTING TO FINISH GRADE ELEVATIONS
 NET CUT: 44,000 CY
 NET FILL: 37,200 CY
- FOR STORMWATER RUNOFF MANAGEMENT NOTES REFER TO SHEET N-1
- ALL PRIVATE STREETS ARE P.U.E., PUBLIC SEWER EASEMENTS, AND PUBLIC DRAINAGE EASEMENTS TO BE PRIVATELY MAINTAINED BY HOA.

LINE TABLE

LINE	BEARING	LENGTH
L2	S. 77°10'15" E	78.82'

CURVE TABLE

CURVE	DELTA	RADIUS	LENGTH	TANGENT
C3	59°45'0"	125.00'	130.35'	71.81'
C12	21°0'16"	200.00'	73.32'	37.08'
C15	68°47'32"	100.00'	120.07'	68.48'
C16	24°33'51"	300.00'	128.73'	65.37'
C17	71°43'11"	35.00'	118.91'	68.66'
C18	32°48'49"	350.00'	200.45'	103.06'

REVISIONS

REV	DESCRIPTION	DATE
1	REVISE SW, RETAINING WALLS, STREET LIGHTS & STORM DRAIN	4/22/2013

DATE: April 22, 2013
 HORIZ. SCALE: 1"=30'
 VERT. SCALE: N/A
 DRAWN BY: CLT
 DESIGNED BY: CLT
 CHECKED BY: JIL
 APPROVED BY: JIL
 PROJECT #: 3110.0013

TOLL BROTHERS INC.
 1140 TOWN CENTER DRIVE SUITE 250
 LAS VEGAS, NV 89144
 PHONE: 702-243-8800 FAX: 702-243-9810

RCI Engineering
 3221 South Highland Drive, Suite 810, Las Vegas, NV 89109
 PHONE: 702-243-8800 FAX: 702-243-8801

IMPROVEMENT PLANS FOR
SANTALUZ AT SUMMERLIN VILLAGE 23A
 PARCELS ES-1 AND WS-1

GRADING PLAN (SHEET 4 OF 5)

CITY OF LAS VEGAS

PROFESSIONAL ENGINEER
 JOHN I. LAND
 Exp. 12/31/2013
 CIVIL
 No. 16441
 4/22/2013
 DRAWING
G-4
 SHEET 6 OF 39
 CLV DRAWING NUMBER
 107Y4984
 CLV PROJECT NUMBER 48157

I HEREBY CERTIFY THAT THIS GRADING PLAN IS IN CONFORMANCE WITH THE APPROVED DRAINAGE STUDY DS#4580 ON FILE WITH CITY OF LAS VEGAS FOR THIS PROJECT.

4/22/2013
 JOHN I. LAND, PE NO. 16441
 48157

1677
 RLM