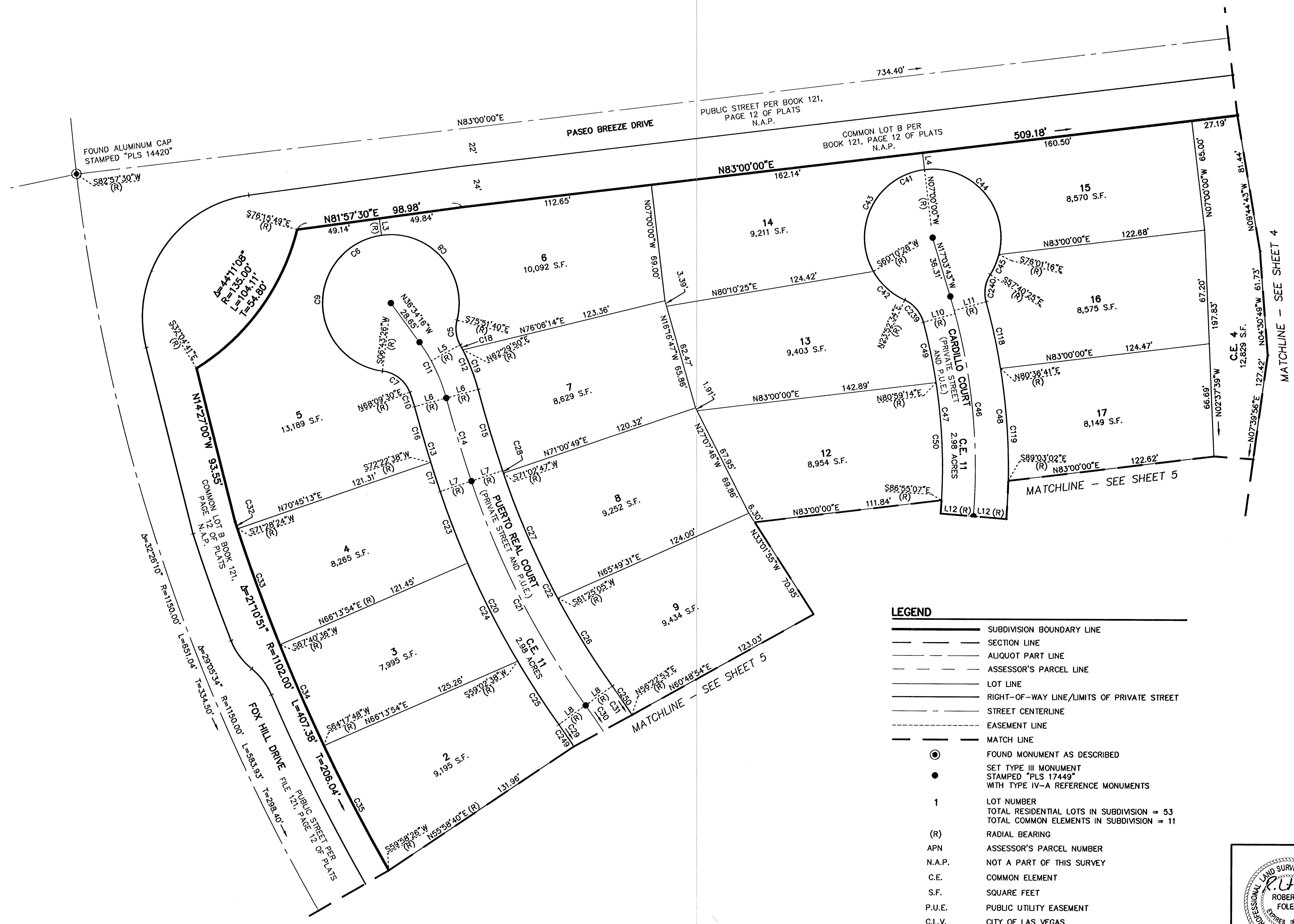


# SANTALUZ AT SUMMERLIN VILLAGE 23A

## A COMMON INTEREST COMMUNITY

A MERGER AND RESUBDIVISION OF LOT 2 AND LOT 3 OF BLOCK "C" OF "SUMMERLIN VILLAGE 23A UNIT NO. 2", BOOK 121, PAGE 12 OF PLATS, SITUATE IN THE WEST HALF (W 1/2) OF SECTION 34, TOWNSHIP 20 SOUTH, RANGE 59 EAST, M.D.M., CITY OF LAS VEGAS, CLARK COUNTY, NEVADA.



LEGEND	
	SUBDIVISION BOUNDARY LINE
	SECTION LINE
	ALIQUOT PART LINE
	ASSESSOR'S PARCEL LINE
	LOT LINE
	RIGHT-OF-WAY LINE/LIMITS OF PRIVATE STREET
	STREET CENTERLINE
	EASEMENT LINE
	MATCH LINE
	FOUND MONUMENT AS DESCRIBED
	SET TYPE III MONUMENT STAMPED "PLS 17449"
	WITH TYPE IV-A REFERENCE MONUMENTS
1	LOT NUMBER
	TOTAL RESIDENTIAL LOTS IN SUBDIVISION = 53
	TOTAL COMMON ELEMENTS IN SUBDIVISION = 11
(R)	RADIAL BEARING
APN	ASSESSOR'S PARCEL NUMBER
N.A.P.	NOT A PART OF THIS SURVEY
C.E.	COMMON ELEMENT
S.F.	SQUARE FEET
P.U.E.	PUBLIC UTILITY EASEMENT
C.L.V.	CITY OF LAS VEGAS

