

# SANTALUZ AT SUMMERLIN VILLAGE 23A

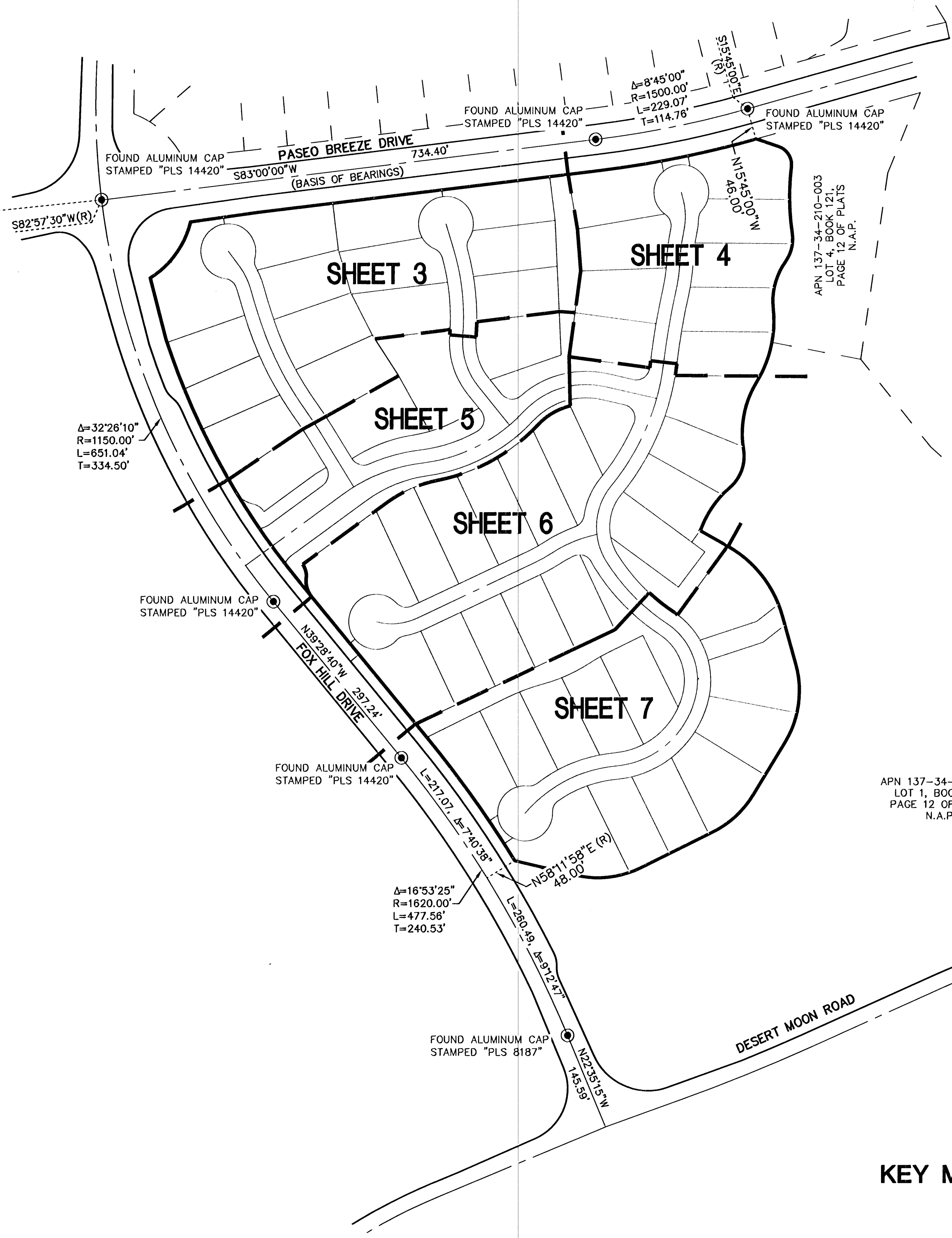
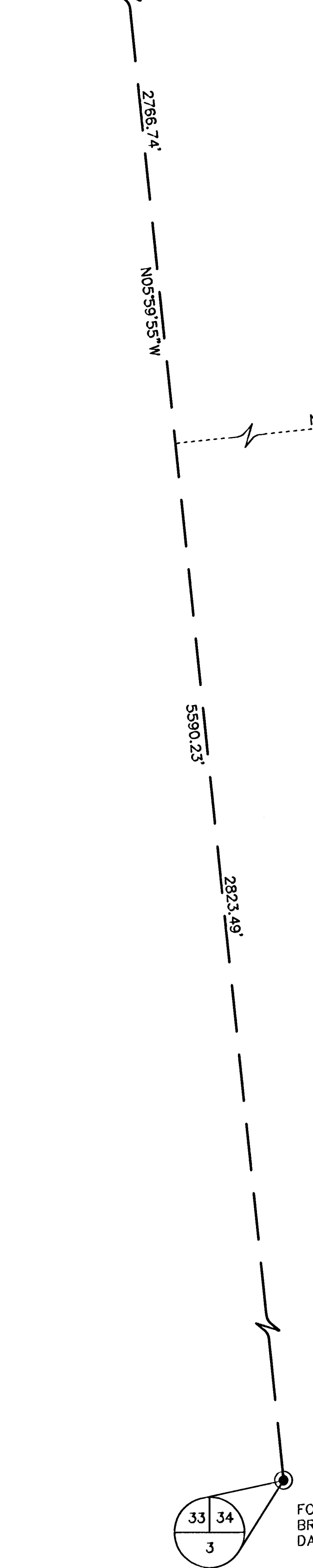
A COMMON INTEREST COMMUNITY

A MERGER AND RESUBDIVISION OF LOT 2 AND LOT 3 OF BLOCK "C" OF "SUMMERLIN VILLAGE 23A UNIT NO. 2", BOOK 121, PAGE 12 OF PLATS, SITUATE IN THE WEST HALF (W 1/2) OF SECTION 34, TOWNSHIP 20 SOUTH, RANGE 59 EAST, M.D.M., CITY OF LAS VEGAS, CLARK COUNTY, NEVADA.



( IN FEET )  
1 inch = 100 ft.

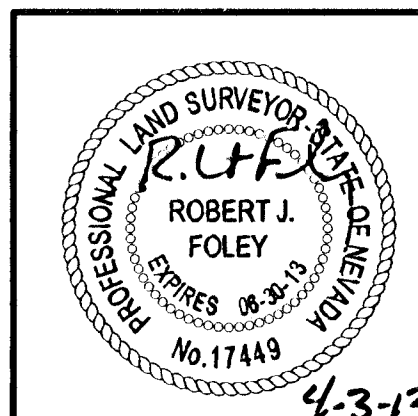
NO MONUMENT FOUND  
LOCATION PER  
BOOK 121, PAGE 12  
OF PLATS



### LEGEND

- SUBDIVISION BOUNDARY LINE
- SECTION LINE
- ALIQUOT PART LINE
- ASSESSOR'S PARCEL LINE
- LOT LINE
- RIGHT-OF-WAY LINE/LIMITS OF PRIVATE STREET
- STREET CENTERLINE
- FOUND MONUMENT AS DESCRIBED
- SET TYPE III MONUMENT STAMPED "PLS 17449" WITH TYPE IV-A REFERENCE MONUMENTS
- LOT NUMBER  
TOTAL RESIDENTIAL LOTS IN SUBDIVISION = 53  
TOTAL COMMON ELEMENTS IN SUBDIVISION = 11
- RADIAL BEARING
- ASSESSOR'S PARCEL NUMBER
- NOT A PART OF THIS SURVEY
- COMMON ELEMENT
- SQUARE FEET
- PUBLIC UTILITY EASEMENT

KEY MAP



CM  
SHEET 2 OF 8