

DISCLAIMER NOTE:

UTILITY LOCATIONS SHOWN HEREON ARE APPROXIMATE ONLY. IT SHALL BE THE CONTRACTOR'S RESPONSIBILITY TO DETERMINE THE EXACT HORIZONTAL AND VERTICAL LOCATION OF ALL EXISTING UNDERGROUND OR OVERHEAD UTILITIES PRIOR TO COMMENCING CONSTRUCTION. NO REPRESENTATION IS MADE THAT ALL EXISTING UTILITIES ARE SHOWN HEREON. THE ENGINEER ASSUMES NO RESPONSIBILITY FOR UTILITIES NOT SHOWN OR UTILITIES NOT SHOWN IN THEIR PROPER LOCATION. CONTRACTOR TO NOTIFY ENGINEER OF ANY CHANGES OR DISCREPANCIES.

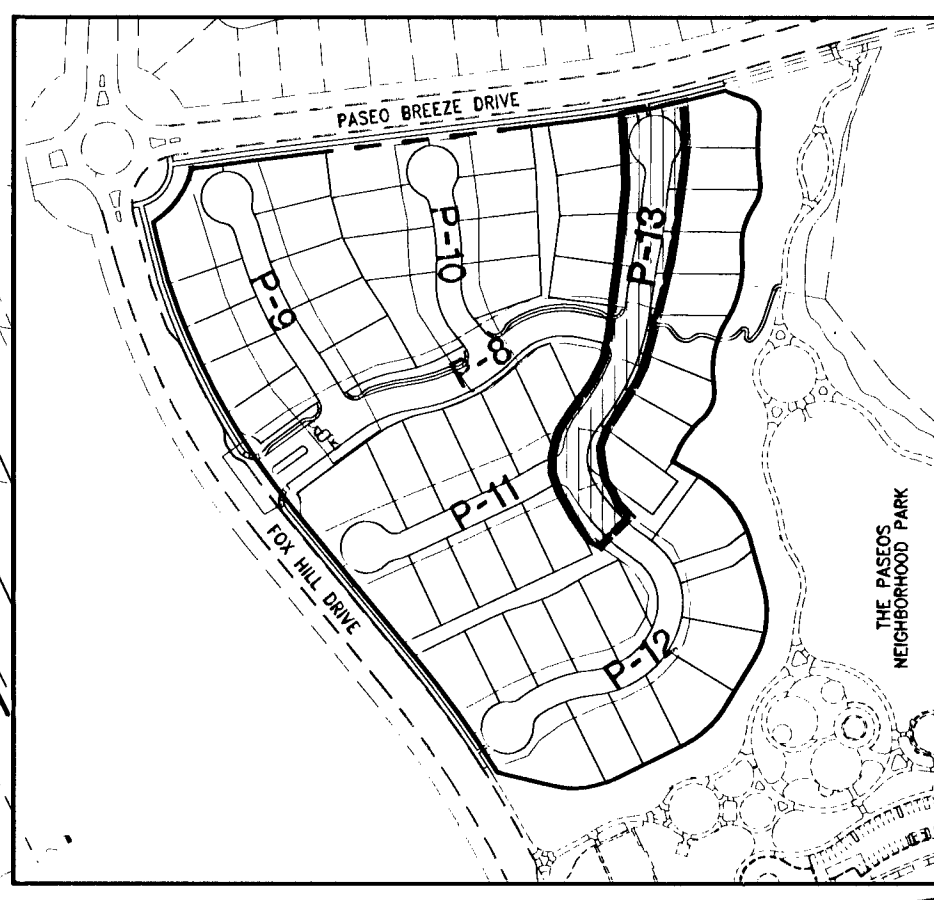
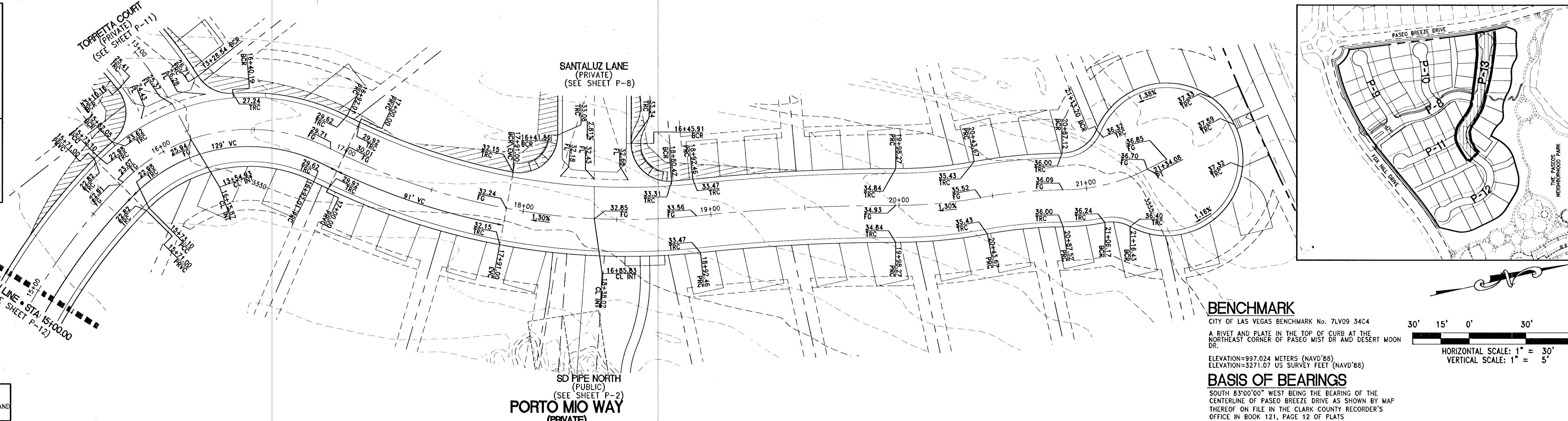
Call before you dig
Avoid overhead power line contact. It is costly.
Call before you dig
Avoid cutting underground utility lines. It is costly.

Call before you Overhead
1-702-227-2929
Nevada Power
Environment and Safety
Services Department

Call before you Dig
1-800-227-2600
CLARK COUNTY TRAFFIC OPERATIONS
1-702-455-7544

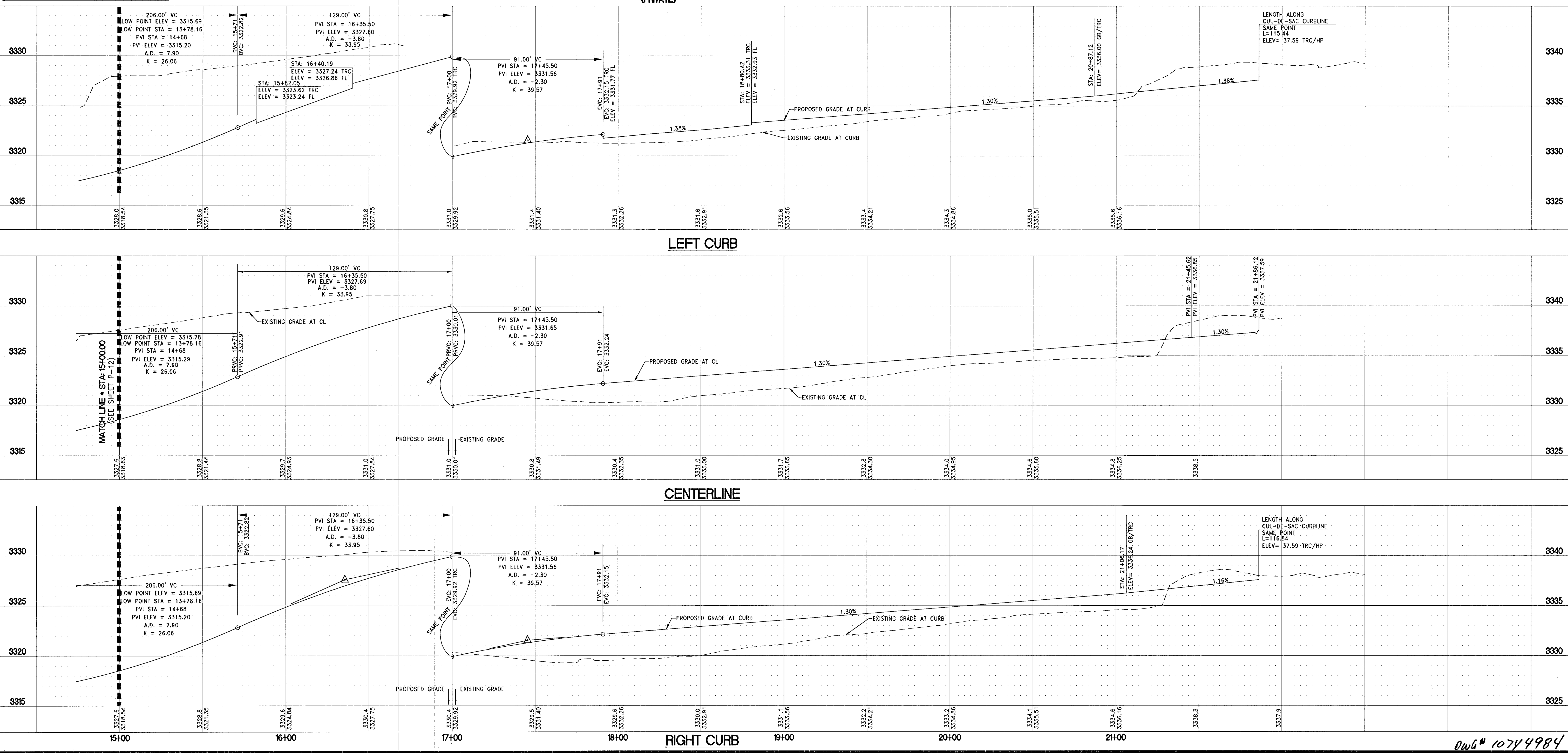
NOTE

SEE SHEET P-6 FOR CENTERLINE DATA, CURB DATA AND UTILITY PROFILES.



REV	DESCRIPTION	BY	APPD	DATE

DATE: April 22, 2013
 HORIZ. SCALE: 1"=30'
 VERT. SCALE: 1"=5'
 DRAWN BY: CLT
 DESIGNED BY: CLT
 CHECKED BY: JLL
 APPROVED BY: JLL
 PROJECT #: 3110.0013



TOLL BROTHERS INC.
 1140 TOWN CENTER DRIVE SUITE 250
 LAS VEGAS, NV 89144
 PHONE: 702-242-9800 FAX: 702-242-9610

RCI Engineering
 5281 South Highroad Drive, Suite 810, Las Vegas, NV 89109
 PH: 702.653.0800 FAX: 702.653.0801

IMPROVEMENT PLANS FOR
SANTALUZ AT SUMMERLIN VILLAGE 23A
 PARCELS ES-1 AND WS-1
 PLAN AND PROFILE
 PORTO MIO WAY FROM STA: 15+00.00 TO STA: 21+45.63

CITY OF LAS VEGAS
 4/22/13 4:59pm

STATE OF NEVADA
 JOHN I. LAND
 Exp. 12/31/2015
 CIVIL ENGINEER
 License No. 16441

4/22/2013
 DRAWING
P-13
 SH 23 of 39
 CLV PROJECT NUMBER
48157

Draw # 10744984

1694