

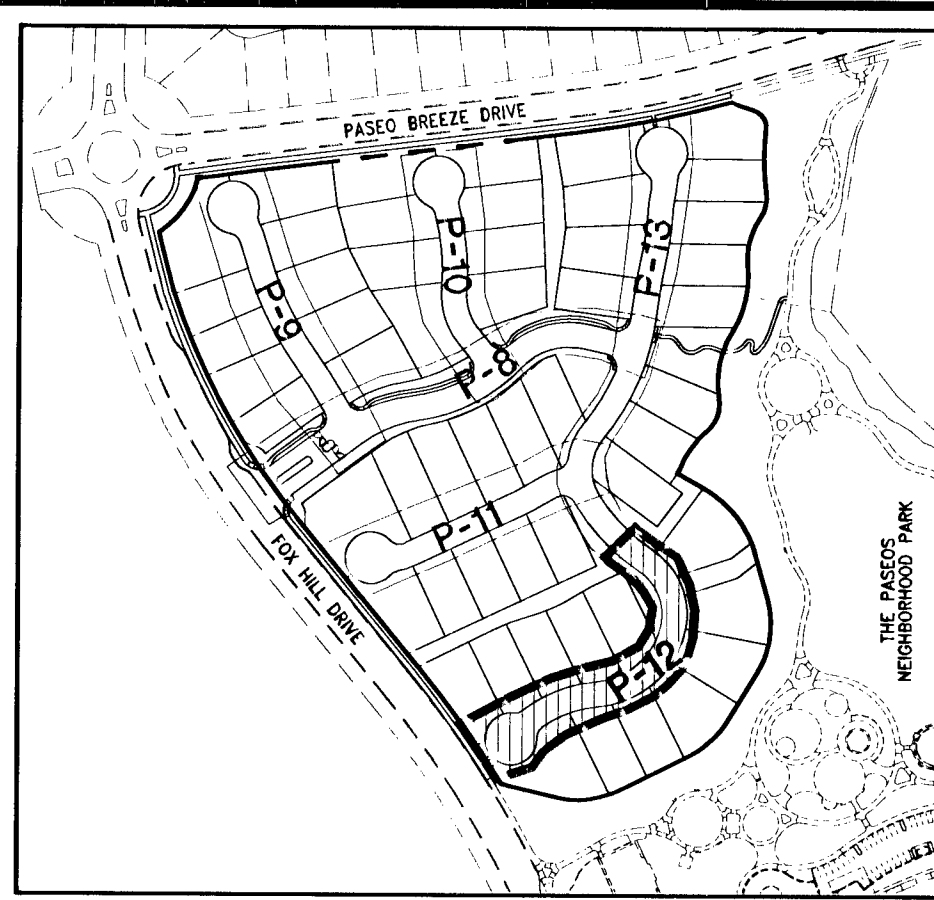
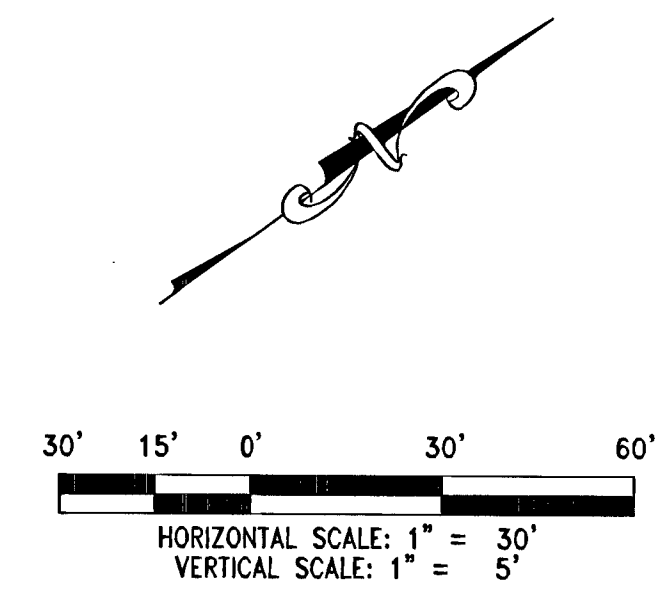
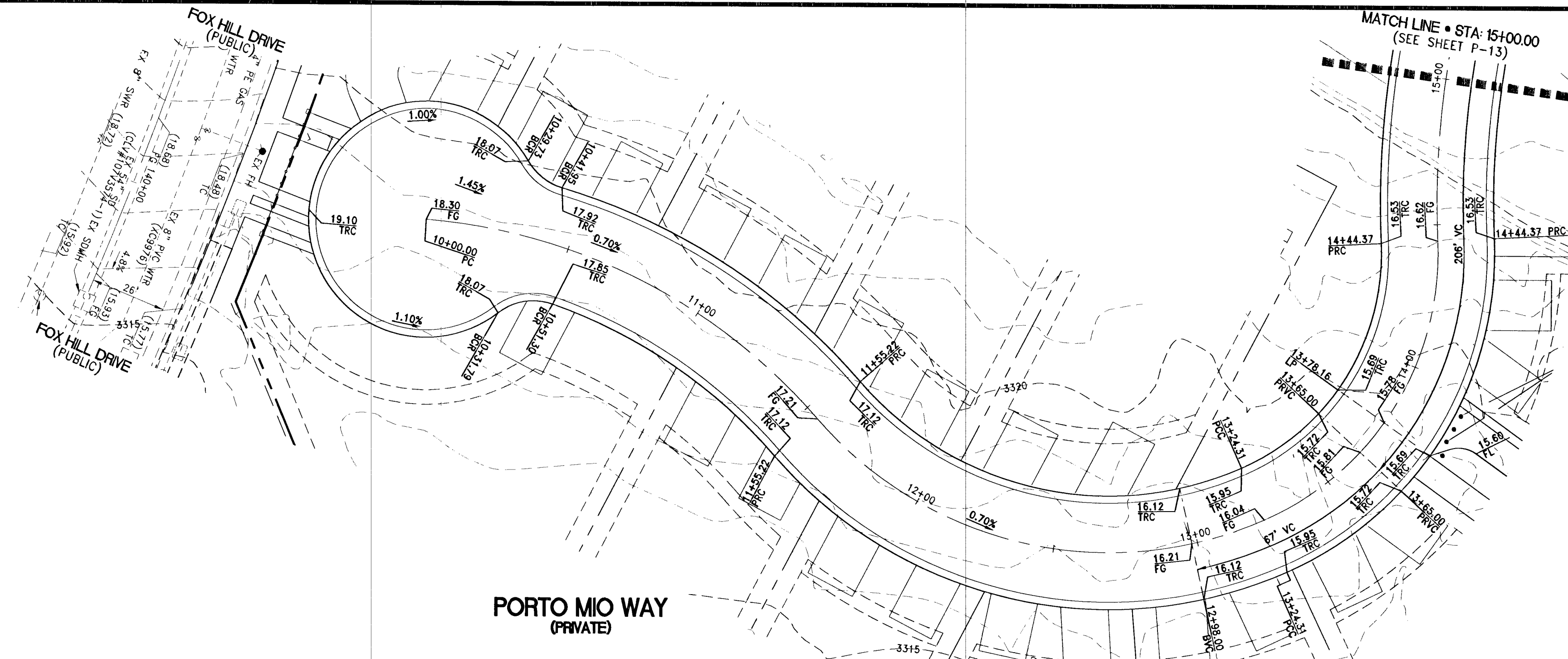
DISCLAIMER NOTE:

UTILITY LOCATIONS SHOWN HEREON ARE APPROXIMATE ONLY. IT SHALL BE THE CONTRACTOR'S RESPONSIBILITY TO DETERMINE THE EXACT HORIZONTAL AND VERTICAL LOCATION OF ALL EXISTING UNDERGROUND OR OVERHEAD UTILITIES PRIOR TO COMMENCING CONSTRUCTION. NO REPRESENTATION IS MADE THAT ALL EXISTING UTILITIES ARE SHOWN HEREON. THE ENGINEER ASSUMES NO RESPONSIBILITY FOR UTILITIES NOT SHOWN OR UTILITIES NOT SHOWN IN THEIR PROPER LOCATION. CONTRACTOR TO NOTIFY ENGINEER OF ANY CHANGES OR DISCREPANCIES.

Avoid overhead power line contact. It's costly.
Call before you Overhead
 1-702-227-2929
 Nevada Power
 Environment and Safety Services Department

Call before you Dig
 Avoid hitting underground utility lines. It's costly.
Call 811
 1-800-277-2600
 CLARK COUNTY UTILITY OPERATIONS
 1-702-455-7544

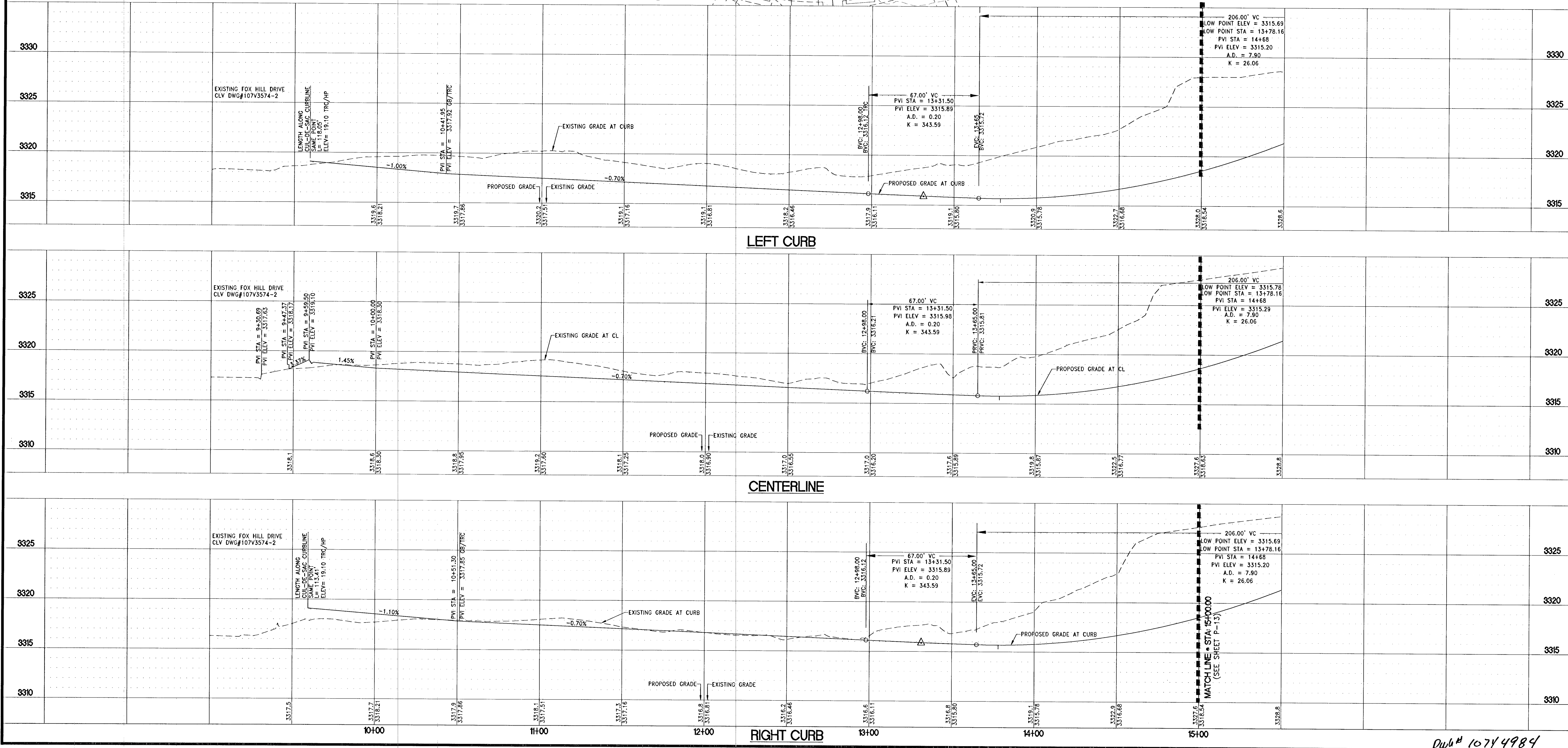
NOTE
 SEE SHEET P-5 FOR CENTERLINE DATA, CURB DATA AND UTILITY PROFILES.



BENCHMARK
 CITY OF LAS VEGAS BENCHMARK No. 7LV09 34C4
 A RIVET AND PLATE IN THE TOP OF CURB AT THE NORTHEAST CORNER OF PASO MIST DR AND DESERT MOON DR.
 ELEVATION=907.024 METERS (NAVD'88)
 ELEVATION=3271.07 US SURVEY FEET (NAVD'88)

BASIS OF BEARINGS
 SOUTH 83°00'00\"/>

REV	DESCRIPTION	DATE



TOLL BROTHERS INC.
 1140 TOWN CENTER DRIVE SUITE 250
 LAS VEGAS, NV 89144
 PHONE: 702-245-8800 FAX: 702-245-8810

RCI Engineering
 3281 South Highland Drive, Suite 810, Las Vegas, NV 89109
 PHONE: 702-452-0800 FAX: 702-452-0801

IMPROVEMENT PLANS FOR
SANTALUZ AT SUMMERLIN VILLAGE 23A
 PARCELS ES-1 AND WS-1
PLAN AND PROFILE
 PORTO MIO WAY FROM STA: 10+00 TO STA: 15+00
 NEVADA
 CITY OF LAS VEGAS

4/22/2013
 DRAWING
P-12
 SHT 22 OF 39
 CLV PROJECT NUMBER
48157

JOHN I. LAND
 CIVIL ENGINEER
 No. 16441
 State of Nevada
 Exp. 12/31/2013

1693

Dub# 1074984