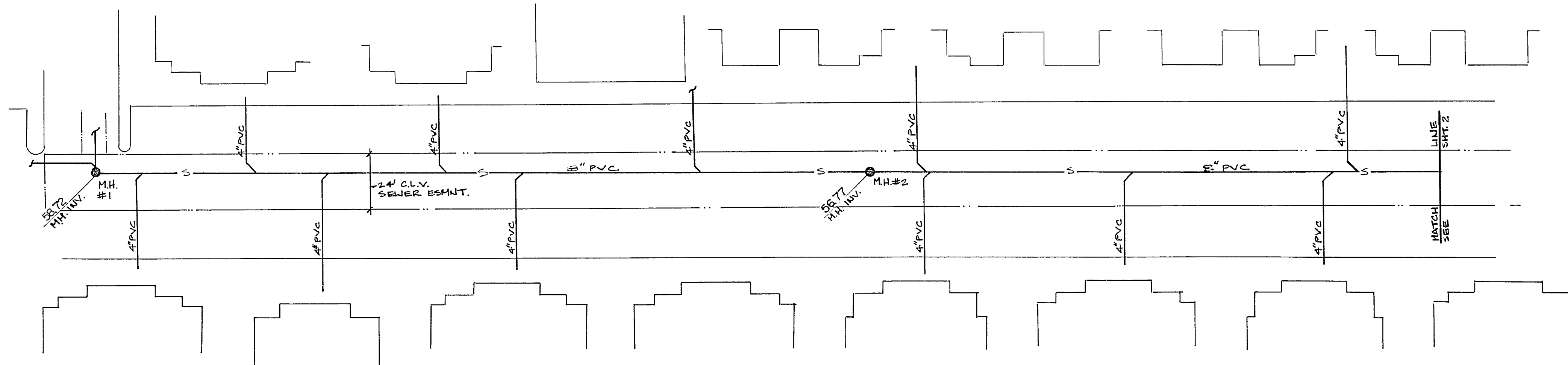
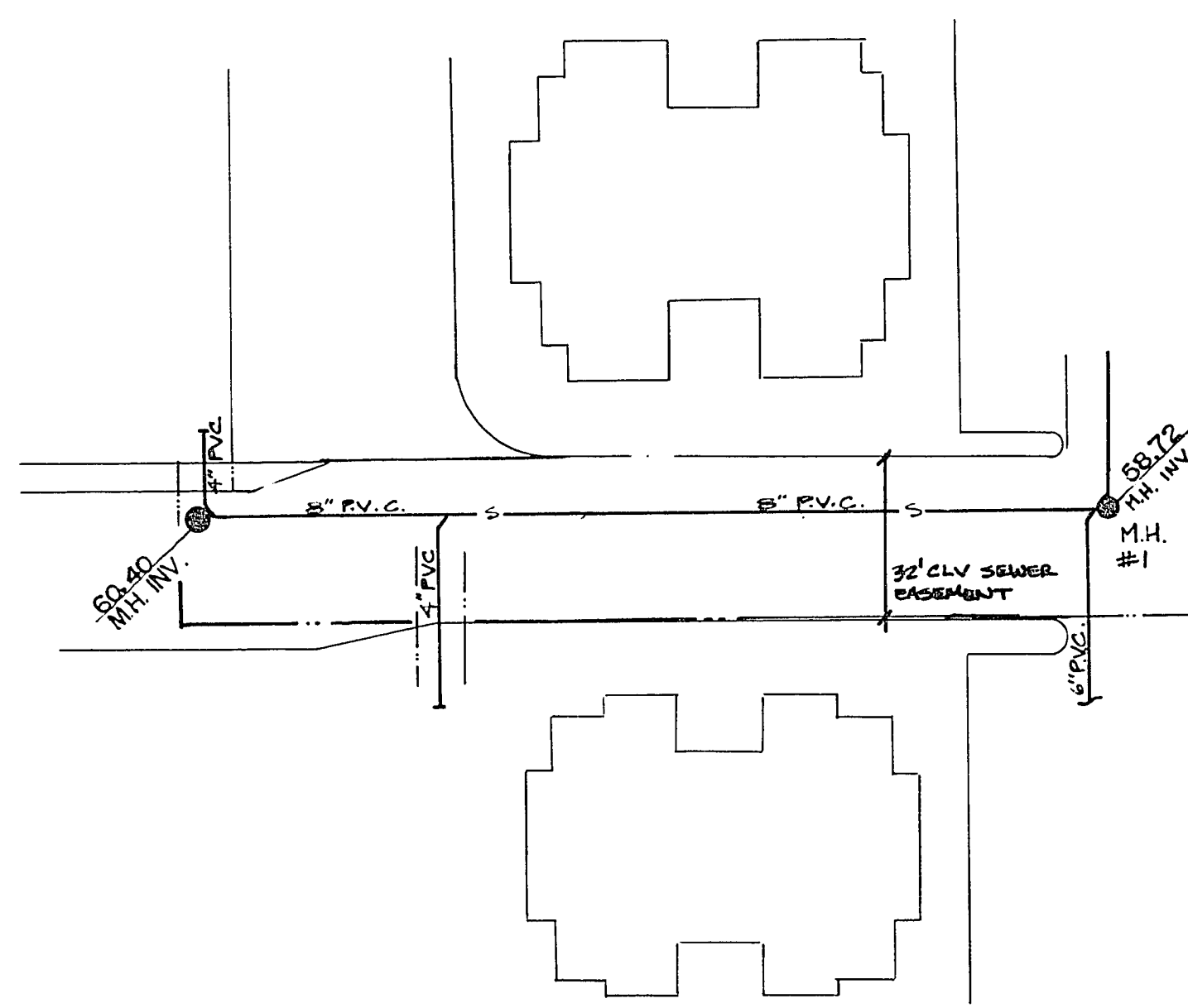


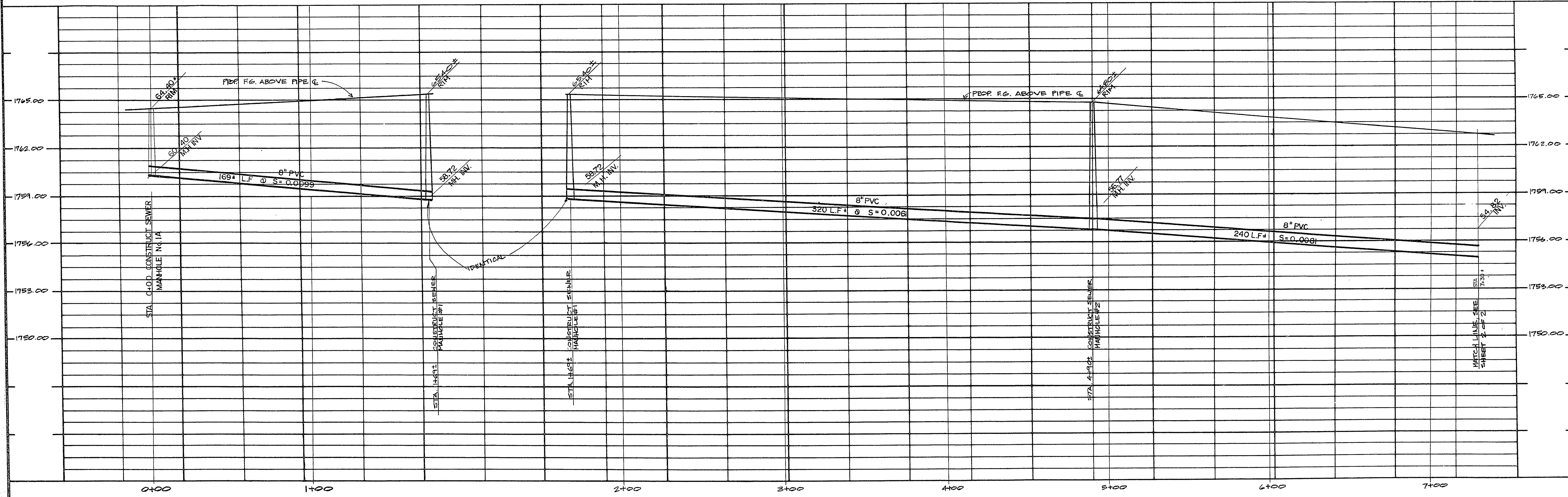
F. J. Anderson
3-9-88



THE LOCATION OF UTILITIES SHOWN ARE BASED ON FIELD RECONNAISSANCE AND RESEARCH OF AVAILABLE RECORDS. ACTUAL FIELD CONDITIONS MAY VARY FROM THOSE SHOWN HERE ON. THE OWNER AND ENGINEER DO NOT GUARANTEE THAT ALL EXISTING UTILITIES ARE SHOWN ON THE CONTRACT DRAWINGS.

NOTE: REFERENCE DRAWING C-3 (UTILITIES PLAN)
SANTA FE APTS., E. CHARLESTON
FOR ADDITIONAL SEWER LATERAL INFO.
M.E.A. ENGINEERS 12-17-87.

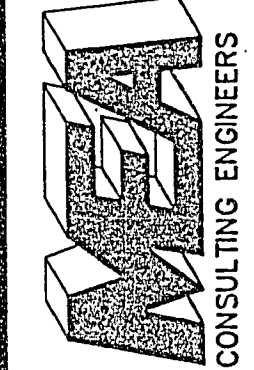
APPROVAL
[Signature]
CL.V. CITY ENGINEER
DATE 3-11-88



PREPARED FOR
MANNING CONSTRUCTION

DATE: 3-8-87
DESIGNED: FCA
DRAWN: LJS
CHECKED:
SCALE: 1"=30'

1500 EAST TROPICANA AVENUE
SUITE 125
LAS VEGAS, NEVADA 89119
(702) 798-1007



SANTA FE APARTMENTS
SEWER PROFILE

SHEET
C3A
OF

307-V624

331-10