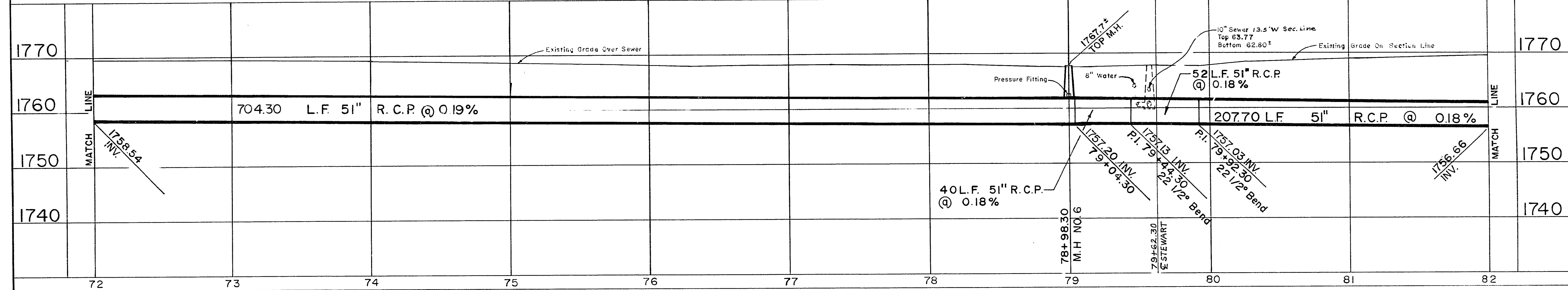
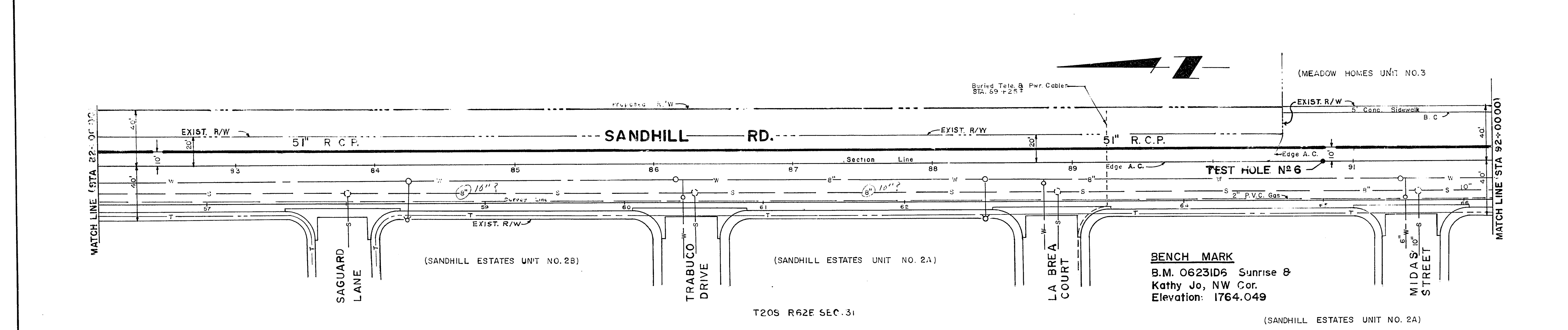


APPROXIMATE QUANTITIES - THIS SHEET			
ITEM	DESCRIPTION	UNIT	QUANTITY
12125IC	51" R.C.P.	L.F.	1976
12125IC	51" R.C.P. 22 1/2" BEND 4 X 4	E.A.	2
	MANHOLE NO. 6	LS	



LINE	STATION	DESCRIPTION	UNIT	QUANTITY
LINE	72+00	Existing Grade Over Sewer		
LINE	72+00	704.30 L.F. 51" R.C.P. @ 0.19%		
LINE	79+00	40 L.F. 51" R.C.P. @ 0.18%		
LINE	79+00	207.70 L.F. 51" R.C.P. @ 0.18%		

EXISTING UTILITIES ARE LOCATED ON THE PLANS FOR THE CONVENIENCE OF THE CONTRACTOR ONLY. THE CONTRACTOR SHALL BE FULLY RESPONSIBLE FOR PRODUCTION OF UTILITIES AND THE CITY BEARS NO RESPONSIBILITY FOR UTILITIES NOT SHOWN ON THE PLANS OR NOT IN THE LOCATION SHOWN ON THE PLANS.



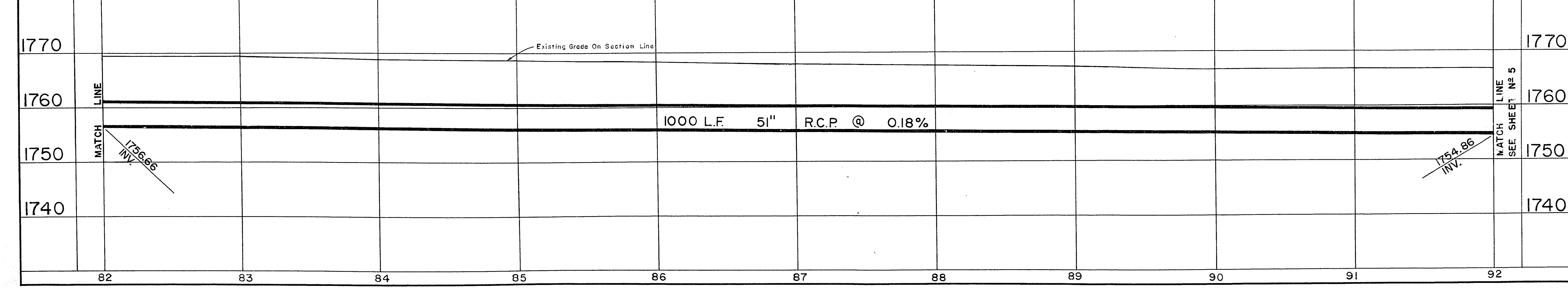
CONTRACT DRAWING

I CERTIFY THAT THIS PLAN WAS PREPARED UNDER MY SUPERVISION.

[Signature]

DATE 23 MAR 72

BID NO. ~~72-13~~ ⁷²⁻⁶³ CONTRACT NO. ~~913~~ ⁹⁶³



LINE	STATION	DESCRIPTION	UNIT	QUANTITY
LINE	82+00	Existing Grade On Section Line		
LINE	82+00	1000 L.F. 51" R.C.P. @ 0.18%		

NO.	DESCRIPTION	BY	DATE	APPROVAL
1	CHANGE M.H. # 8 STATIONING CHANGE QUANTITY 51" R.C.P.	M.G.	8-2-72	<i>[Signature]</i>

REVISIONS

CITY OF LAS VEGAS NEVADA
DEPARTMENT OF PUBLIC WORKS
SERVICES DIVISION

SANDHILL INTERCEPTOR
WASHINGTON (ON SANDHILL) TO
CHARLESTON (1/5 MILE WEST OF LAMB)

W.O. NO. 3170	F.B.K. NO. 70-3X	DATE	DRAWING NO.
SC. (H) 1" = 40'	SC. (V) 1" = 10'		
DES. Dave McSweeney	DR. S. J. Arnaud	3-7-72	FILE NO.
APPROVED BY DIRECTOR OF PUBLIC WORKS		3-24-72	307-V445
			SHEET 4 OF 10

20-1-93