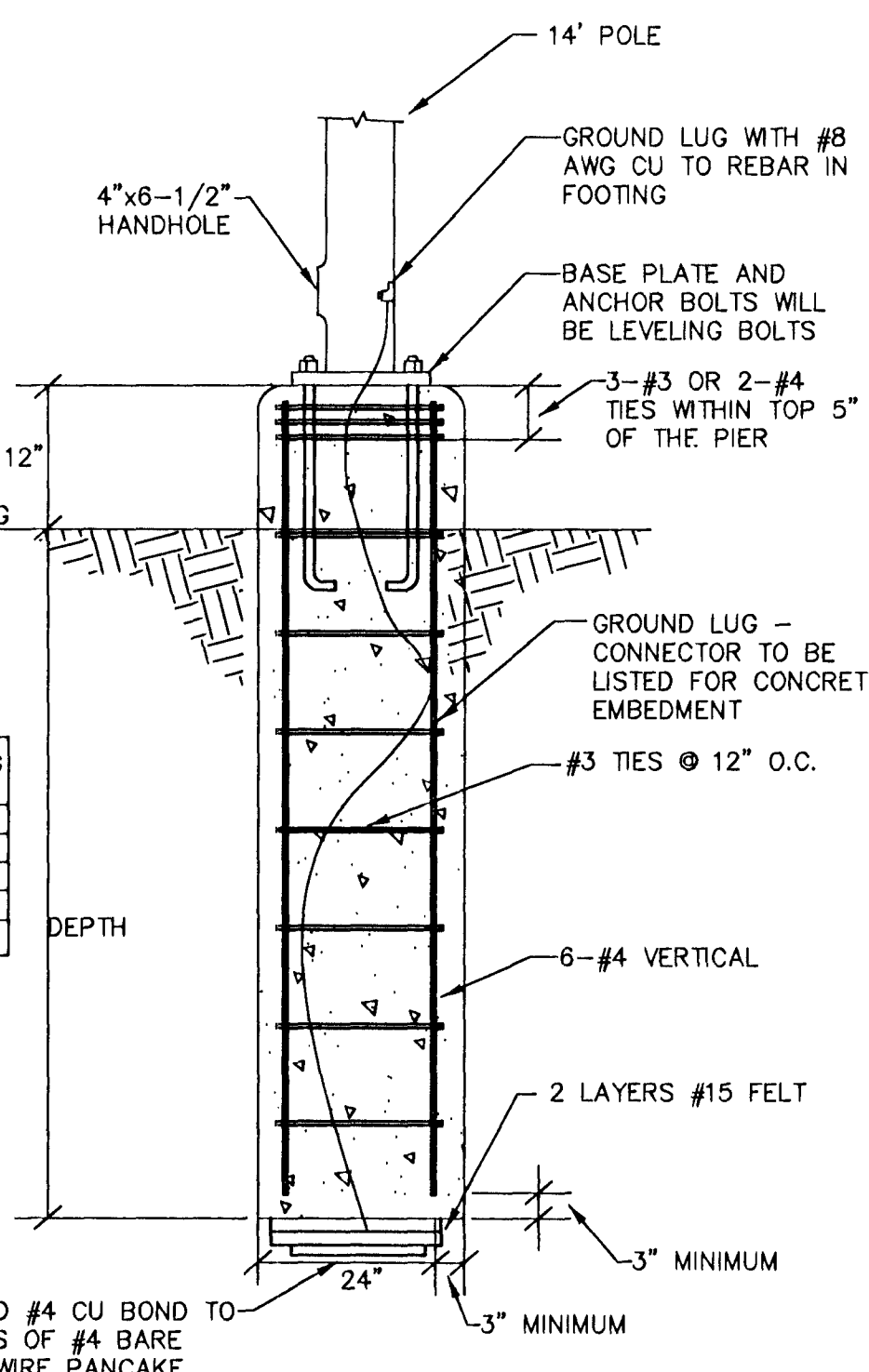
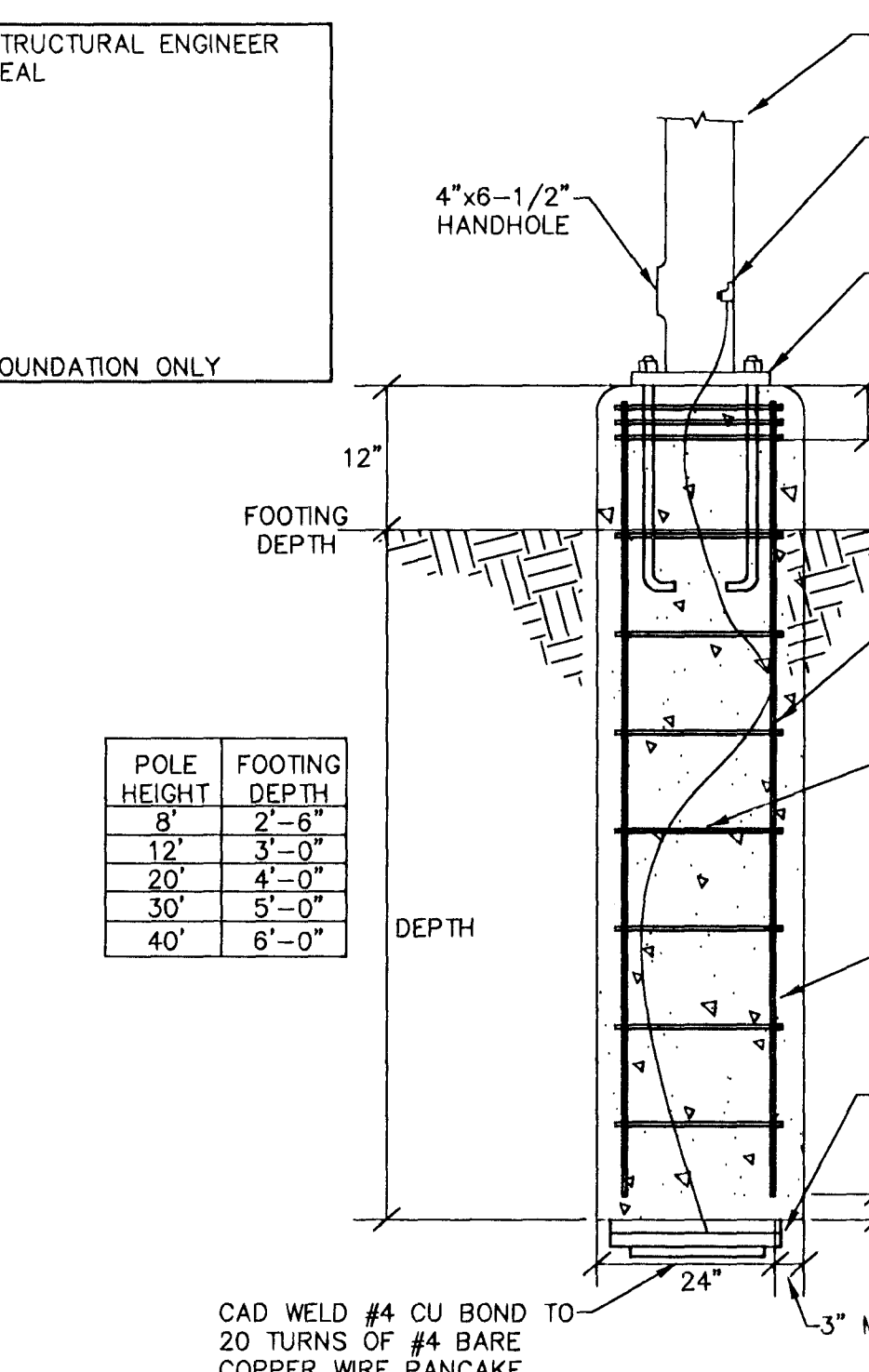


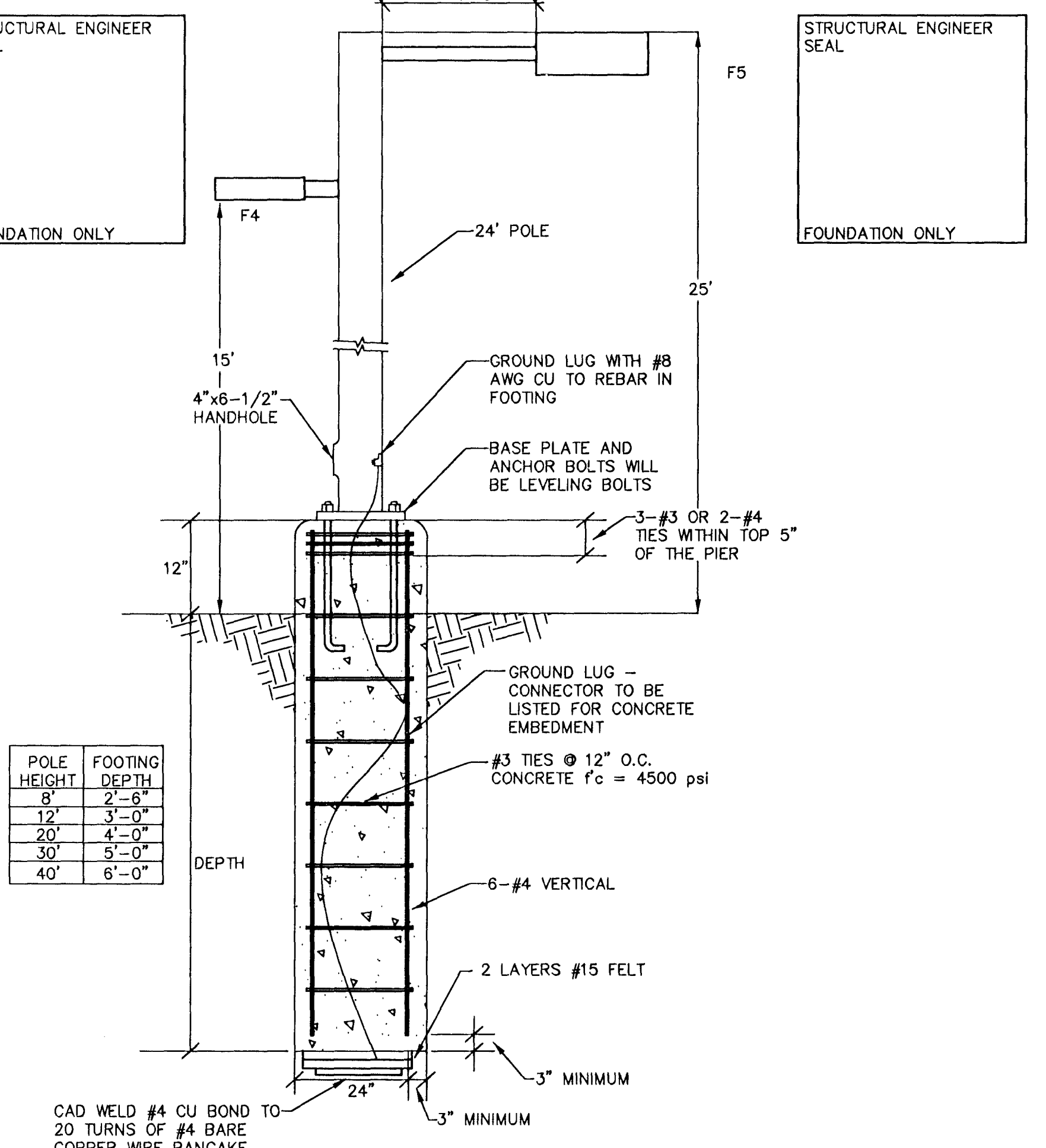
1 CITY OF LAS VEGAS POLE BASE DETAIL - PARKING LOT F1, F2, F2B, F3
ED1 NOT TO SCALE



2 CITY OF LAS VEGAS POLE BASE DETAIL - TRAIL F4
ED1 NOT TO SCALE

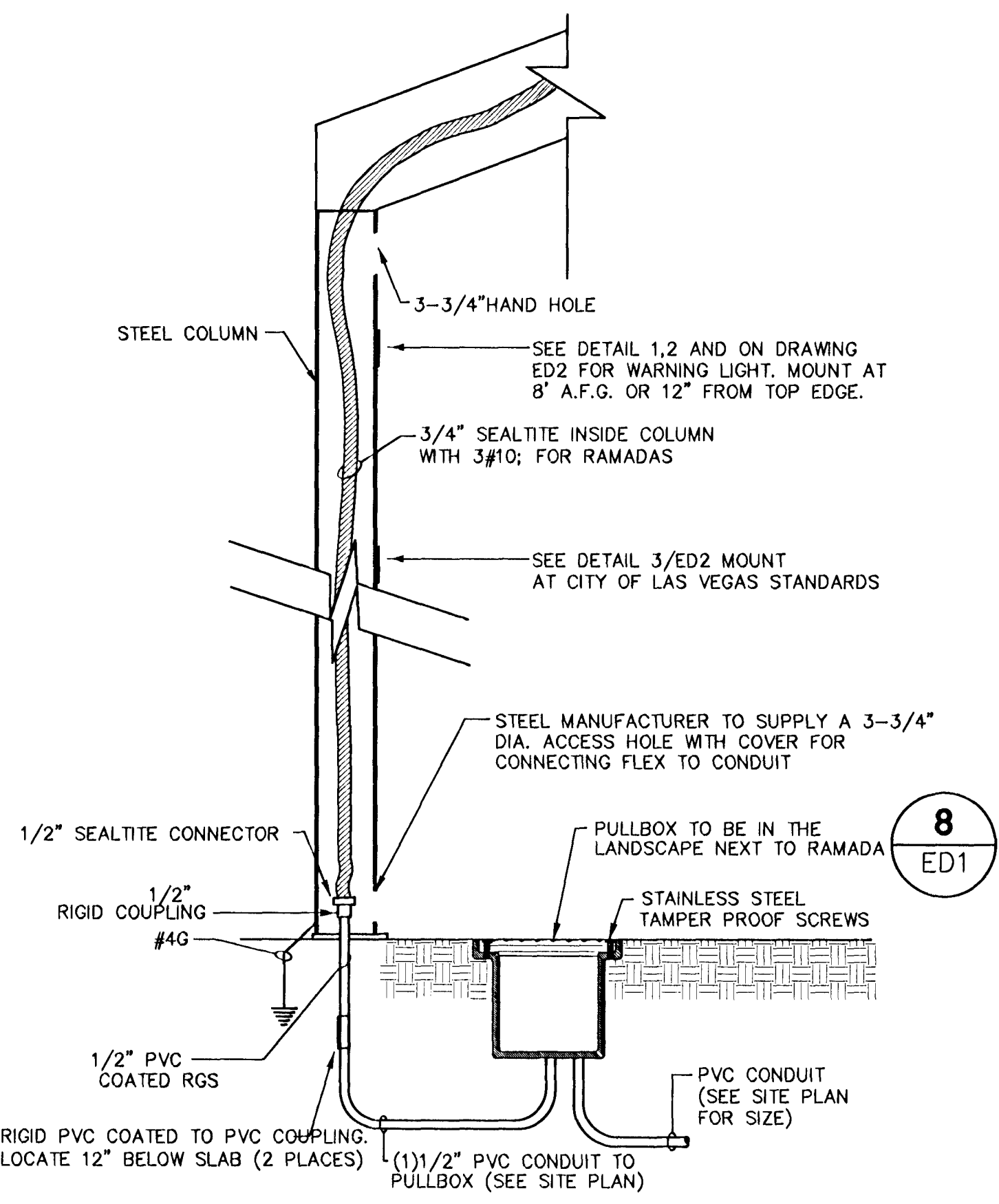


3 CITY OF LAS VEGAS POLE BASE DETAIL - TOT LOT/WATER PLAY AREA - F9
ED1 NOT TO SCALE

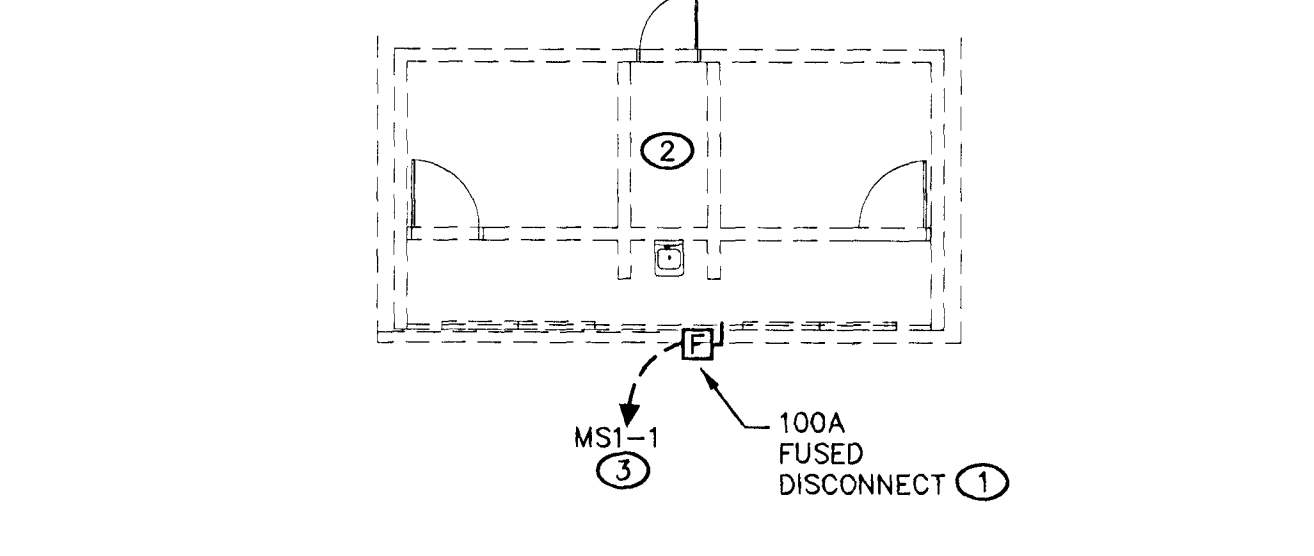


4 CITY OF LAS VEGAS POLE BASE DETAIL - BASKETBALL COURT - F5
ED1 NOT TO SCALE

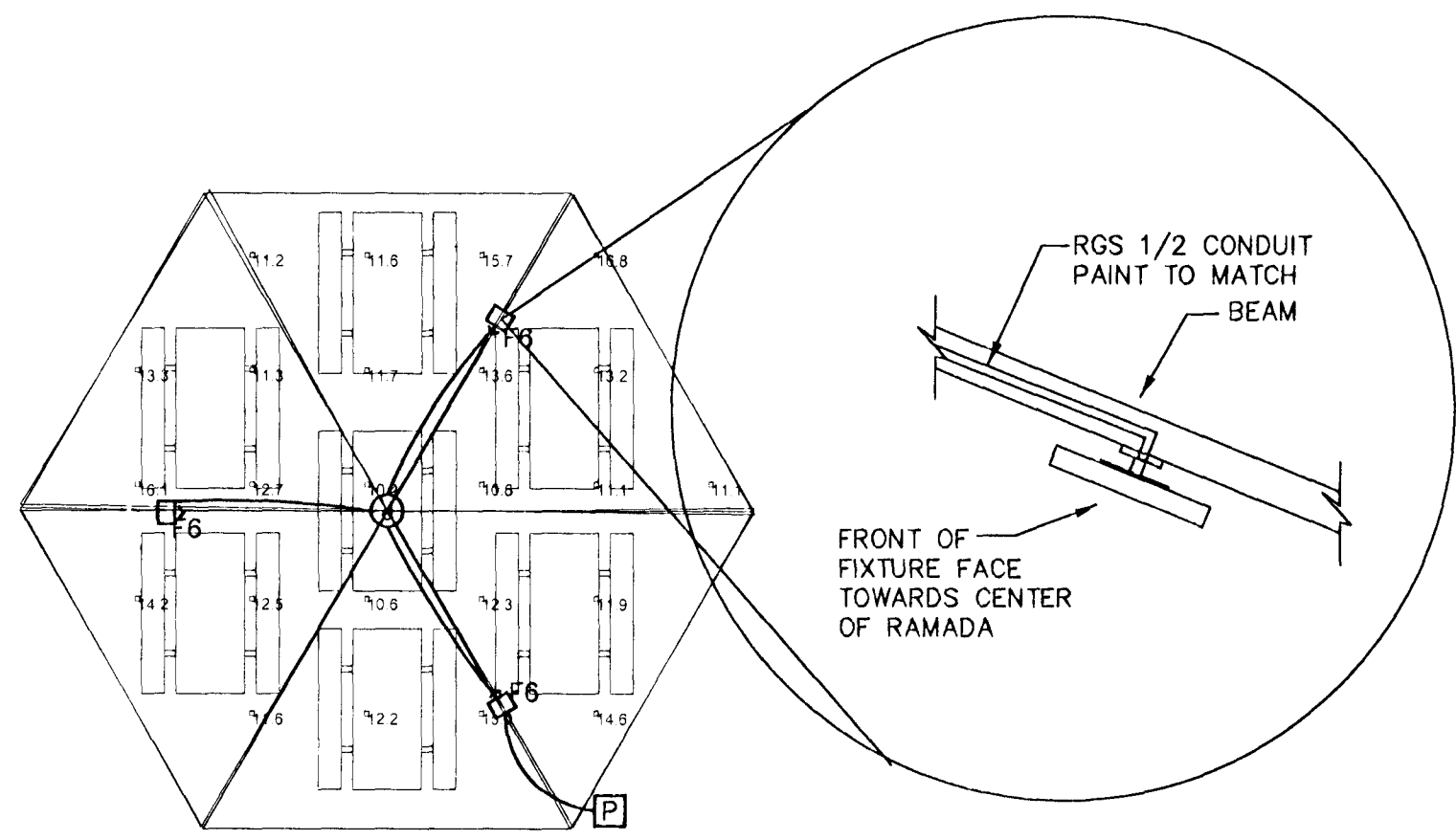
- POLE BASE NOTES ONLY:**
- SEE SPECIFICATION SECTION 16520 FOR ADDITIONAL REQUIREMENTS.
 - EXTEND ANCHOR BOLTS 1" OF THREAD ABOVE NUT.
 - PROVIDE BASE COVER, 4'-6" THICK WITH A 1" SLOPE AWAY FROM POLE.
 - EXTEND CONDUITS CONTINUOUS THROUGH AND ABOVE POLEBASE TO WITHIN 3" BELOW BOTTOM OF HAND HOLE.
 - ENTIRE BASE TO BE POURED MONOLITHICALLY WITH TOP OF BASE TO HAVE AN 1-1/2" DOME.
 - SONOTUBE FORMS TO BE STRIPPED (4) HOURS AFTER POUR AND STILL GREEN. GREEN CONCRETE TO BE RUBBED (STONED) TO BRING UP THE "FAT" AND THEN FINISHED TO A LIGHT BROOM FINISH. BASE TO BE WET CURED FOR 7 DAYS.



5 RAMADA-CONDUIT MOUNTING DETAIL
ED1 NOT TO SCALE
NOTES: THIS DETAIL ONLY
① CONDUIT TO BE ROUTED INSIDE COLUMN. COORDINATE CONDUIT INSTALLATION WITH SHELTER CONSTRUCTION. CONDUIT TO BE ATTACHED TO COLUMN.
② GROUND RAMADA PER 2005 NEC

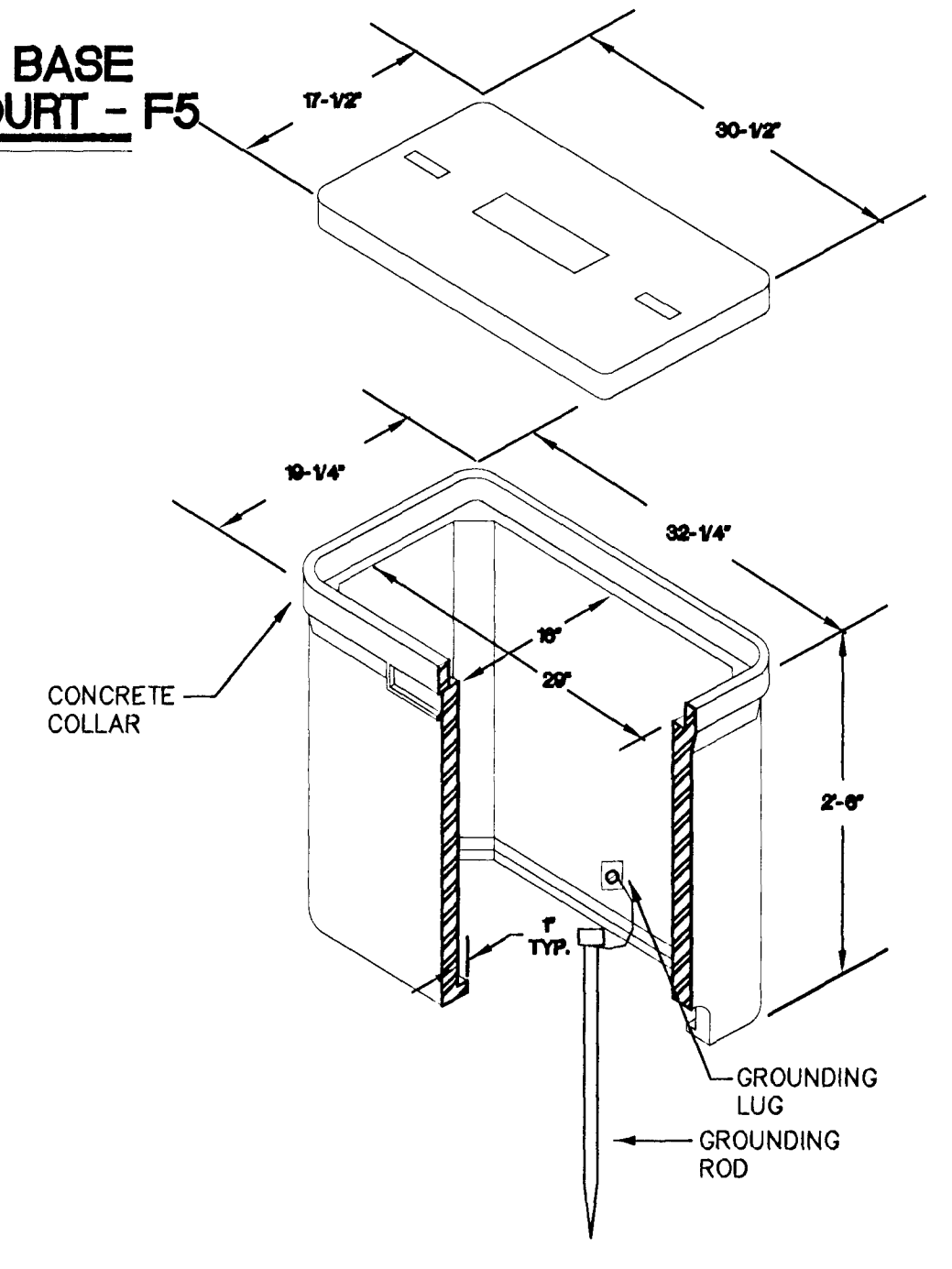


6 NORTH PARK RESTROOM ELECTRICAL DETAIL
ED1 SCALE: 1"=10'
NOTES:
① FUSED DISCONNECT TO BE LOCATED NEAREST TO RESTROOM PANEL. REFER TO NOTE #1 FOR PANEL LOCATION.
② RESTROOM IS TO BE MANUFACTURED BY OTHERS.
③ SEE ONLINE DRAWING EG2 FOR FEEDER AND CONDUIT REQUIREMENTS.



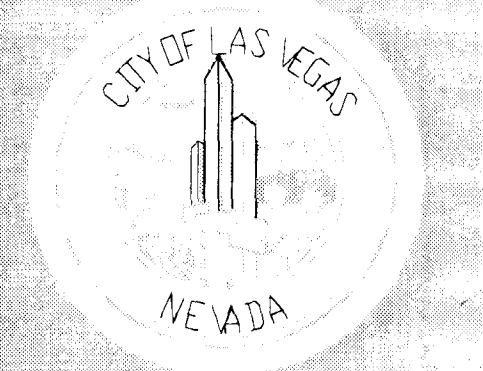
7 TYPICAL RAMADA 30' DETAIL
ED1 NOT TO SCALE

RAMADA PHOTOMETRIC STATISTICS						
Description	Symbol	Avg	Max	Min	Max/Min	Avg/Min
LARGE RAMADA 32'	□	12.7 fc	16.8 fc	10.2 fc	1.6:1	1.2:1



8 TYPICAL PULLBOX GROUNDING DETAIL
ED1 NOT TO SCALE
NOTES: (THIS DETAIL)
1. PROVIDE FACTORY IMPRINTED "LIGHTING" OR "ELECTRIC".
2. EXTEND ALL CONDUITS A MINIMUM OF 3" ABOVE BOTTOM OF BOX. ALL WIRES A MINIMUM OF 24" OUTSIDE OF BOX.
3. LID SHALL BE APPROVED NON-METALIC POLYMER TYPE MATERIAL (NO CONCRETE, NO METAL, NO FIBERLITE, NO OTHER MATERIALS - NO SUBSTITUTIONS) WITH BRASS TIE DOWNS.
4. SEE SPECIFICATION FOR ADDITIONAL INFORMATION ON APPROVED SPLICES AND PULLBOX INSTALLATION AND GROUNDING REQUIREMENTS.

THESE RECORD DOCUMENTS HAVE BEEN PREPARED BASED ON INFORMATION PROVIDED BY OTHERS. THE DESIGN PROFESSIONAL HAS NOT VERIFIED THE ACCURACY AND/OR COMPLETENESS OF THIS INFORMATION AND SHALL NOT BE RESPONSIBLE FOR ANY ERRORS OR OMISSIONS WHICH MAY BE INCORPORATED HEREIN AS A RESULT.



DEPARTMENT OF PUBLIC WORKS

SANDHILL OWENS PARK & TRAILHEAD
LAS VEGAS, NEVADA

ELECTRICAL DETAIL PLAN

OWNER: CITY OF LAS VEGAS
DEPARTMENT OF PUBLIC WORKS
CAPITAL PROJECT MANAGEMENT SECTION

400 EAST STEWART AVENUE
LAS VEGAS, NEVADA 89101
PHONE: (702) 229-8535
FAX: (702) 384-8846
TDD: (702) 386-1100

DATE: 12/7/2009
SCALE: NTS
REV NO: 08.168411
DRAWN: [Name]
FILE: [Name]
SHEET NO: ED1

123243