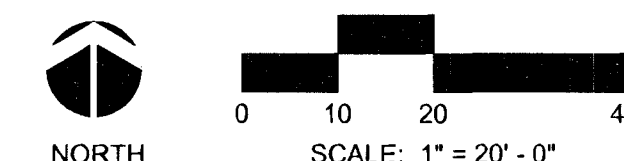
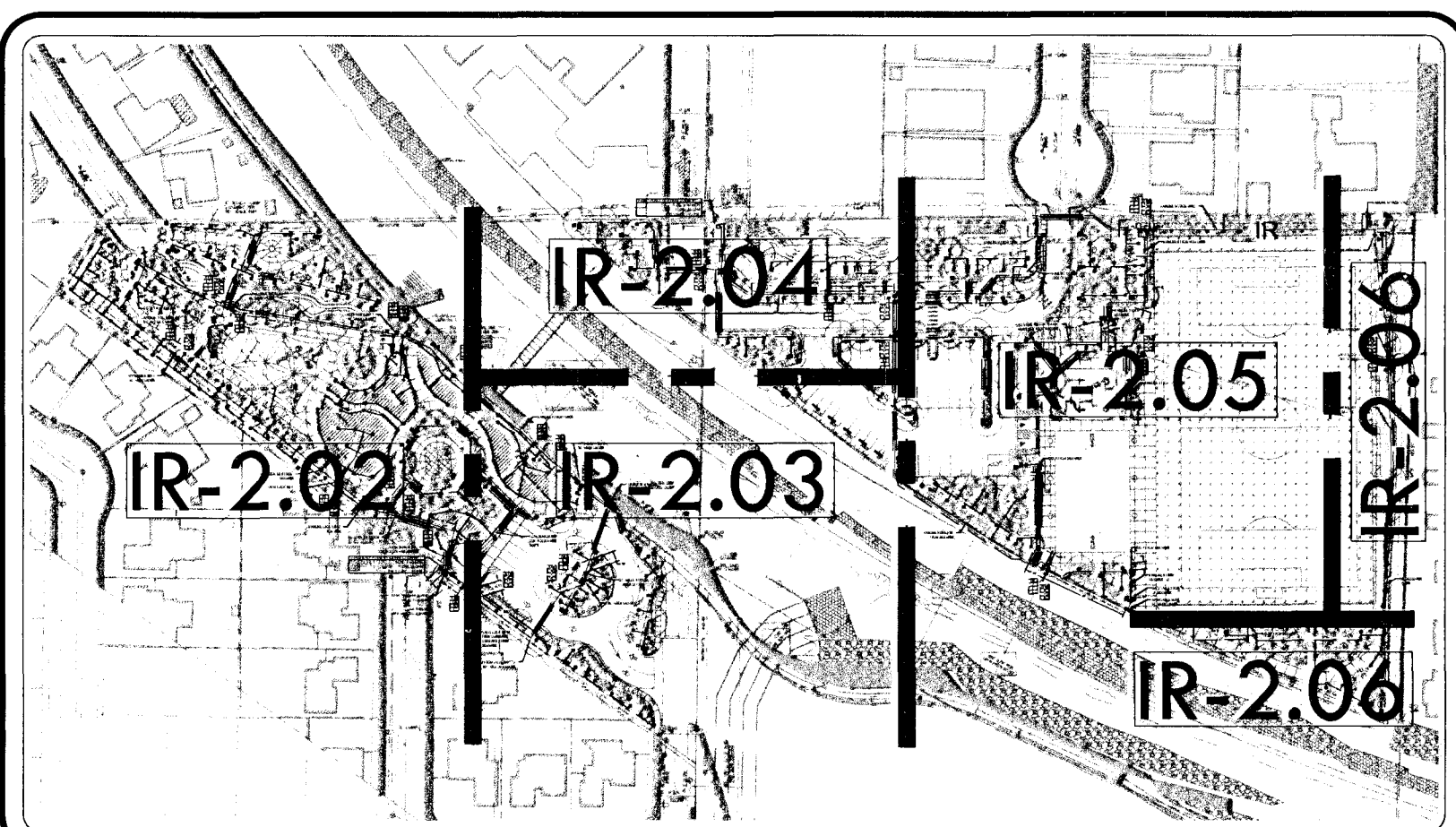


NOTE: THESE RECORD DRAWINGS HAVE BEEN PREPARED BASED ON INFORMATION PROVIDED BY THE CONTRACTOR. THE INFORMATION PROVIDED BY THE CONTRACTOR IS BELIEVED TO BE RELIABLE AND CORRECT, HOWEVER AQUA ENGINEERING IS NOT RESPONSIBLE FOR ITS ACCURACY, NOR FOR ERRORS OR OMISSIONS WHICH MAY HAVE BEEN INCORPORATED INTO THESE DRAWINGS AS A RESULT.

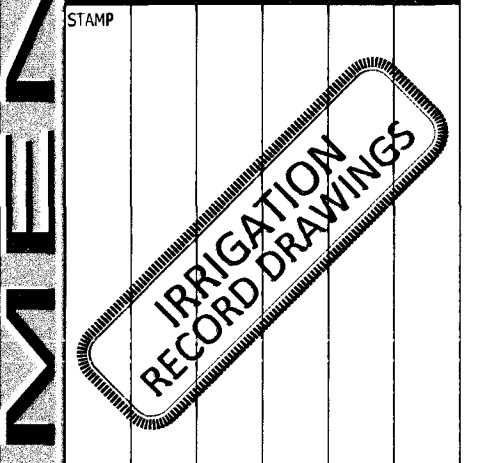
**FLAG NOTES**

- ① "TRAILHEAD" IRRIGATION POINT-OF-CONNECTION "A": EXCAVATE AND EXPOSE 1-1/2-INCH IRRIGATION WATER SERVICE LINE FROM LAS VEGAS VALLEY WATER DISTRICT (POTABLE) SUPPLY IN THE APPROXIMATE LOCATION INDICATED DOWNSTREAM OF WATER METER AND BACKFLOW PREVENTER (REFER TO UTILITY PLANS). USE FITTINGS AS REQUIRED TO MAKE CONNECTION TO WATER SUPPLY. VERIFY EXACT LOCATION OF POINT-OF-CONNECTION WITH THE OWNER'S REPRESENTATIVE PRIOR TO CONSTRUCTION.
- ② "PARK" IRRIGATION POINT-OF-CONNECTION "B": EXCAVATE AND EXPOSE 1-1/2-INCH IRRIGATION WATER SERVICE LINE FROM CITY OF NORTH LAS VEGAS (POTABLE) SUPPLY IN THE APPROXIMATE LOCATION INDICATED DOWNSTREAM OF WATER METER AND BACKFLOW PREVENTER (REFER TO UTILITY PLANS). USE FITTINGS AS REQUIRED TO CONNECT IRRIGATION SYSTEM TO WATER SUPPLY. VERIFY EXACT LOCATION OF POINT-OF-CONNECTION WITH THE OWNER'S REPRESENTATIVE PRIOR TO CONSTRUCTION.
- ③ INSTALL PEDESTAL MOUNTED COMBINATION CCU/SATELLITE CONTROLLER ASSEMBLY IN THE APPROXIMATE LOCATION INDICATED. 120 VAC ELECTRICAL POWER AND DEDICATED TELEPHONE SERVICE WILL BE PROVIDED TO ASSEMBLY BY ELECTRICAL CONTRACTOR (REFER TO ELECTRICAL DRAWINGS). COORDINATE EXACT PLACEMENT OF CCU/SATELLITE CONTROLLER ASSEMBLY WITH THE OWNER'S REPRESENTATIVE PRIOR TO CONSTRUCTION. COORDINATE INSTALLATION OF THE ASSEMBLY AS ASSOCIATED COMPONENTS UNDER THE SUPERVISION OF LOCAL AUTHORIZED MAXICOM FIELD REPRESENTATIVE.
- ④ INDICATED REMOTE CONTROL VALVE IS LOCATED AT THE END OF THE ANTICIPATED LOW VOLTAGE WIRE PATH. STUB-OUT TWO SPARE CONTROL WIRES AND ONE SPARE COMMON WIRE FROM THE RESPECTIVE SATELLITE CONTROLLER TO THIS LOCATION FOR FUTURE USE IN CASE OF CONTROL/Common WIRE FAILURE. PROVIDE A 3-FOOT COILED LENGTH OF EACH SPARE WIRES IN ALL REMOTE CONTROL VALVE BOXES.
- ⑤ IRRIGATION PIPE AND VALVES MAY BE SHOWN OUTSIDE OF THE PLANTING AREA IN THE HARDSCAPE OR OUTSIDE OF PROPERTY FOR GRAPHIC CLARITY ONLY. INSTALL ALL IRRIGATION COMPONENTS IN LANDSCAPED AREA OR THROUGH SLEEVING AND WITHIN THE PROPERTY BOUNDARY.
- ⑥ INSTALL DEDICATED FLOW SENSOR CABLE FROM FLOW SENSOR TERMINAL LOCATED AT THE CCU/SATELLITE CONTROLLER ASSEMBLY TO FLOW SENSOR ASSEMBLY. WIRE TO FLOW SENSOR IN ACCORDANCE WITH LOCAL AUTHORIZED MAXICOM FIELD REPRESENTATIVE RECOMMENDATIONS.
- ⑦ LANDSCAPE IN THIS AREA CONSISTS OF AN ARTIFICIAL TURFGRASS SURFACE. INSTALL ALL QUICK COUPLING VALVE ASSEMBLIES, MAINLINE PIPE, LATERAL PIPE AND OTHER IRRIGATION EQUIPMENT WITHIN LANDSCAPE PLANTERS OUTSIDE OF ARTIFICIAL TURFGRASS AREAS ONLY.



**Cardno WRG**  
 LAS VEGAS  
 10648 JEFFERYS ST. HENDERSON, NV 89002  
 TEL: (702) 980-8300 FAX: (702) 980-9805  
 WWW.CARDNOWR.COM  
 PLANNERS • ENGINEERS • LANDSCAPE ARCHITECTS • SURVEYORS

SANDHILL OWENS PARK & TRAILHEAD  
 LAS VEGAS, NEVADA  
 IRRIGATION PLAN



OWNER: CITY OF LAS VEGAS DEPARTMENT OF PUBLIC WORKS CAPITAL PROJECT MANAGEMENT SECTION
400 EAST STEWART AVENUE LAS VEGAS, NEVADA 89101 PHONE: (702) 229-8535 FAX: (702) 386-4846 TDD: (702) 386-9108
DRAWN: RUP/ERS
FILE: CLV308143101
DATE: 12/2008
SCALE: AS NOTED
BID NO: 01.153411
CLV DWE NO: 650104
IRRIGATION PLAN
SHEET NO: IR-2.06

123231

AQUA ENGINEERING INC. 1100 S. LAS VEGAS BLVD. SUITE 100 LAS VEGAS, NV 89102  
 \*AS-BUILT RECORD DRAWINGS\*  
 AQUA ENGINEERING INC. 1100 S. LAS VEGAS BLVD. SUITE 100 LAS VEGAS, NV 89102  
 AQUA ENGINEERING INC. 1100 S. LAS VEGAS BLVD. SUITE 100 LAS VEGAS, NV 89102

IRRIGATION PLAN  
 SANDHILL OWENS PARK & TRAILHEAD  
 LAS VEGAS, NEVADA  
 IRRIGATION PLAN  
 IR-2.06