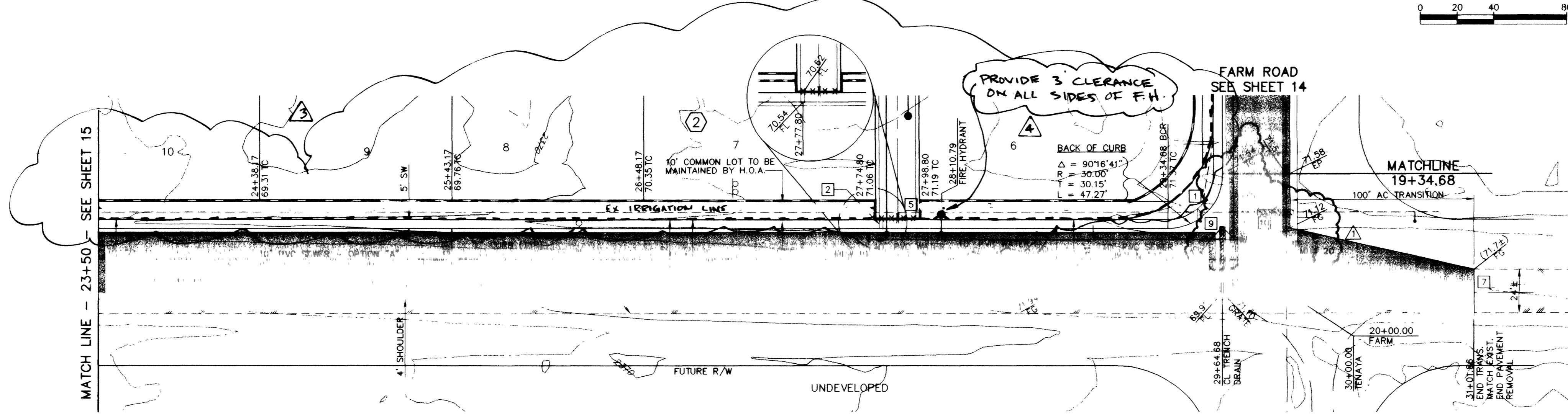
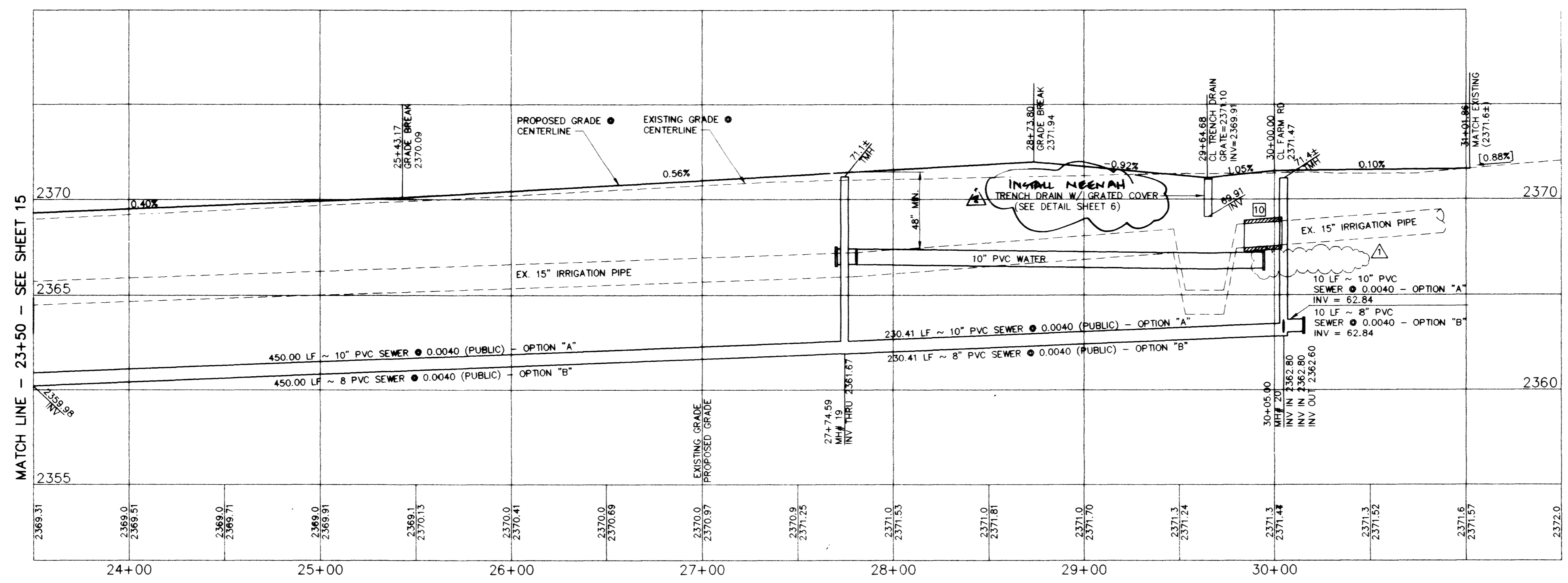
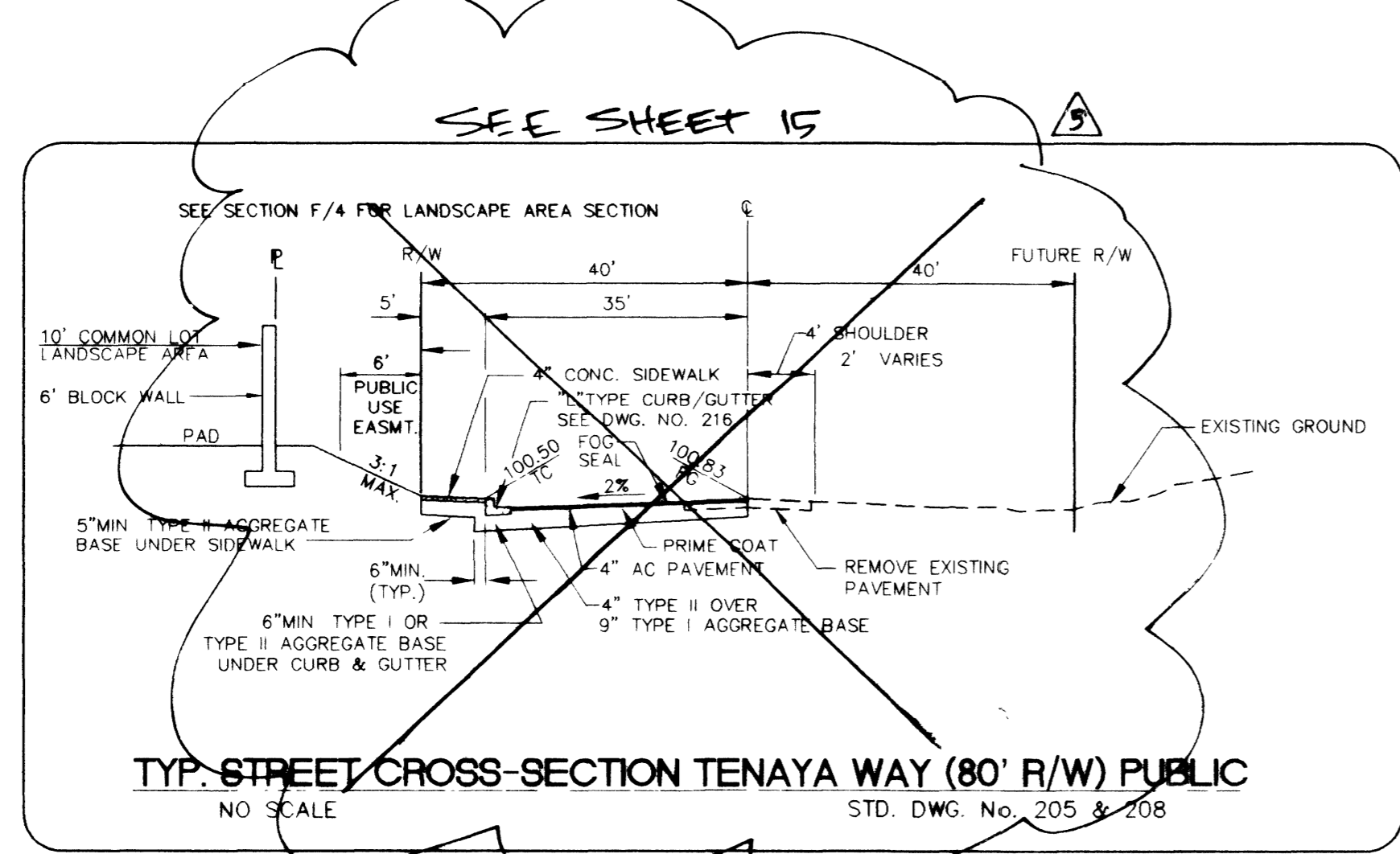




DESIGNED BY:	DATE:
CHECKED BY:	JOB NUMBER: 001-6007
NO.	REVISION
1	REVISED WATER MAINS
2	CLARIFY GATE TYPE
3	REVISE WALL LOCATIONS PER GCM
4	REVISE F.H. CLEARANCE
5	CLARIFY STREET SECTION

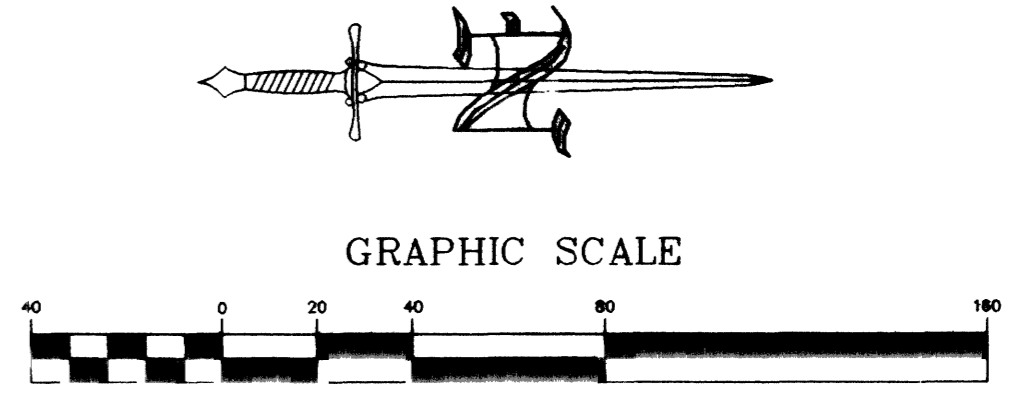
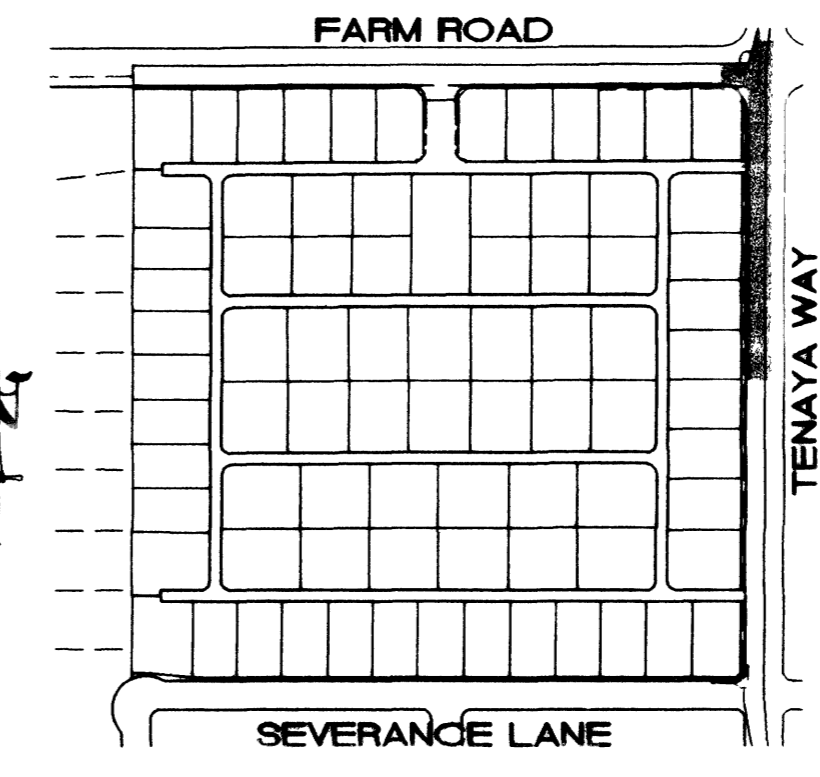


TENAYA WAY (PUBLIC)



CONSTRUCTION NOTES

- INSTALL CASE III SIDEWALK RAMP PER STD. DWG. NO. 235 A = 8', B = 8'
- INSTALL 2' SIDEWALK DRAIN PER STD. DWG. NO. 236
- INSTALL NEENAH TRENCH DRAIN WITH GRATED COVER (SEE DETAIL SHEET 6)
- INSTALL 24" WIDE WROUGHT IRON CRASH GATE
- REMOVE EXISTING AC PAVEMENT
- MATCH EXISTING AC PAVEMENT
- CONTRACTOR TO RELOCATE EXISTING BLOW-OFF
- CONCRETE ENCASE 20 LF ~ 15" IRRIGATION LINE PER LVWD STANDARDS



APPROVED FOR CONSTRUCTION

*[Signature]* DATE: 10/29/19

**BENCHMARK**  
 CITY OF LAS VEGAS BENCHMARK #1LV90155WS  
 CLARK COUNTY GIS BRASS CAP #805-19-60  
 N.E. CORNER ELKHORN ROAD AND BUFFALO DRIVE  
 ELEVATION = 2412.9623 FEET (NAVD 88)  
 ELEVATION = 735.7409 METERS (NAVD 88)

**DISCLAIMER NOTE**

UTILITY LOCATIONS SHOWN HEREON ARE APPROXIMATE ONLY. IT SHALL BE THE CONTRACTOR'S RESPONSIBILITY TO DETERMINE THE EXACT HORIZONTAL AND VERTICAL LOCATION OF ALL EXISTING UNDERGROUND OR OVERHEAD UTILITIES PRIOR TO COMMENCING CONSTRUCTION. NO REPRESENTATION IS MADE THAT ALL EXISTING UTILITIES ARE SHOWN HEREON. THE ENGINEER ASSUMES NO RESPONSIBILITY FOR UTILITIES NOT SHOWN OR UTILITIES NOT SHOWN IN THEIR PROPER LOCATION.

before Call you Dig  
1-800-227-2600

before Call you Overhead  
1-702-593-6111

**STREET PLAN AND PROFILE**  
 TENAYA WAY  
 SALT CREEK - CUSTOM HOME COMMUNITY  
 WATT HOMES - NEVADA DIVISION  
 CITY OF LAS VEGAS

**ORION ENGINEERING AND SURVEYING, INC.**  
 3068 E. SUNSET ROAD, SUITE 9  
 LAS VEGAS, NEVADA, 89120  
 (702) 739-5921 FAX (702) 739-5929

**Orion**

36265