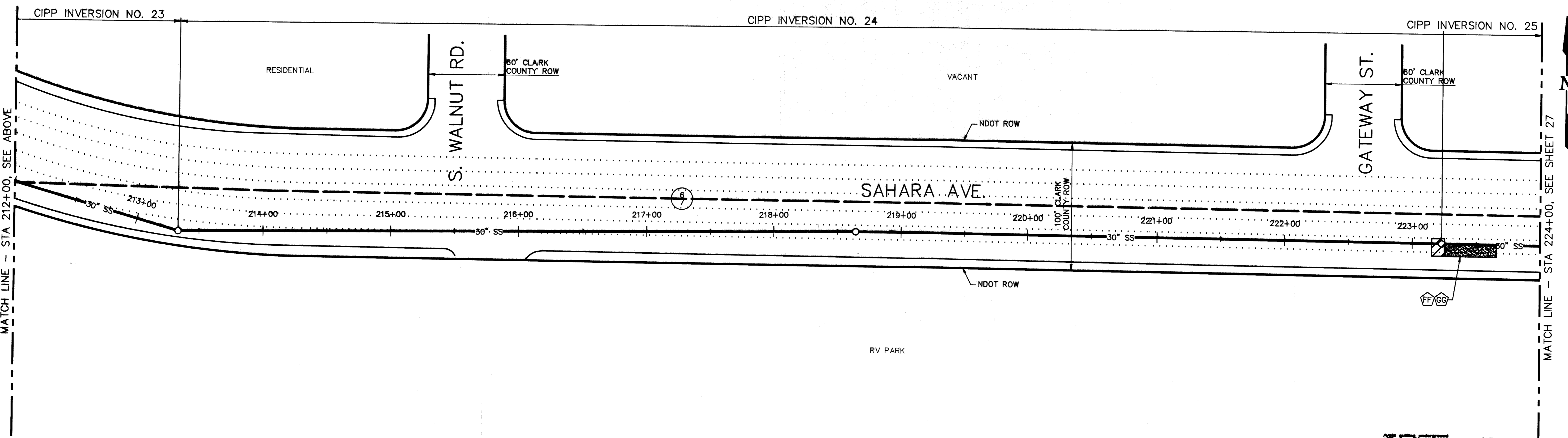


CIPP LINER INSTALLATION NOTES:

NOTE	INVERSION NO.	ESTIMATED DURATION (DAYS)	ACTIVITY
DD	22	4	INSTALL CIPP LINER FROM THIS LOCATION
EE	23	4	INSTALL CIPP LINER FROM THIS LOCATION
FF	24	4	INSTALL CIPP LINER FROM THIS LOCATION
GG	25	4	INSTALL CIPP LINER FROM THIS LOCATION

LEGEND:

- VEHICLE RAMP, PER DETAIL SHEET 17
- LANE CLOSURE
- LANE CLOSURE, FOR INVERSION AREA/EQUIPMENT (APPROX 10'x40')



NO.	DATE	DESCRIPTION	APP'D

**DEPARTMENT OF PUBLIC WORKS**  
**ENGINEERING DESIGN SECTION**

CITY ENGINEER: CHARLES KAKOWSKI JR. P.E.  
 PROJECT MANAGER: THERESA M. HANRAHAN, P.E.  
 DESIGNED BY: CMG  
 DRAWN BY: RJS  
 CHECKED BY: CMG

HORIZONTAL SCALE: 1" = 40'  
 VERTICAL SCALE: NONE  
 DATE: 01/21/04

TITLE: SAHARA AVENUE SANITARY SEWER REHABILITATION - PHASE III  
 SHEET: CIPP LINER LANE CLOSURES PLAN STA 200+00 TO STA 224+00

EXPIRES 6/30/05  
 Sheet

26 of 28  
 DRAWING NO. 307-V826

BID NUMBER: 04.1730.01

Call before you Dig  
 1-800-227-2800

Call before you Overhead  
 593-6111