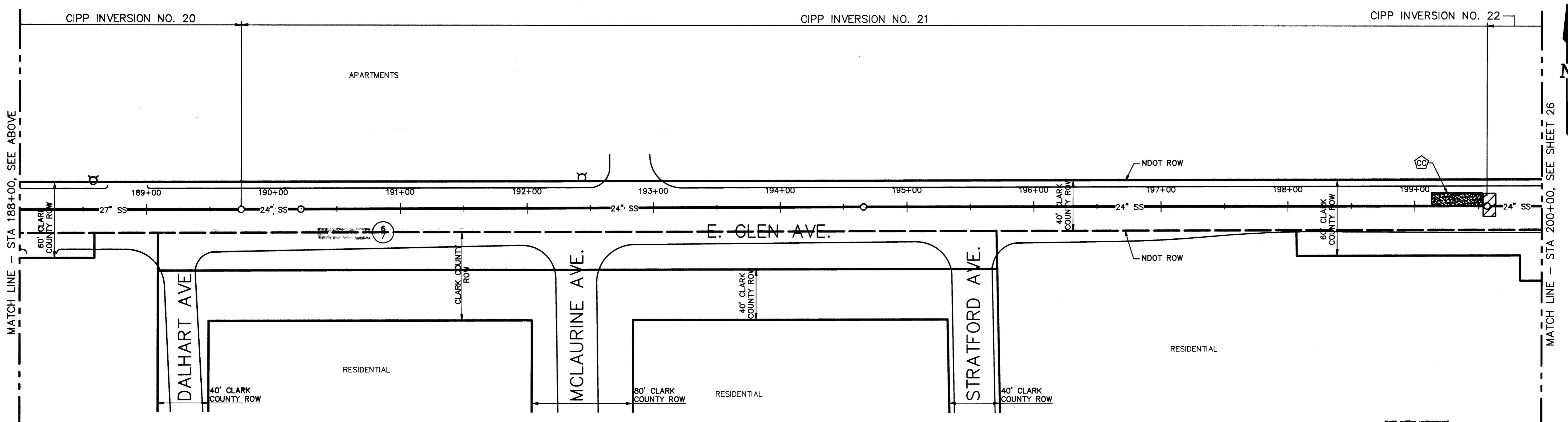


**CIPP LINER INSTALLATION NOTES:**

NOTE	INVERSION NO.	ESTIMATED DURATION (DAYS)	ACTIVITY
①	17	4	INSTALL CIPP LINER FROM THIS LOCATION
②	18	4	INSTALL CIPP LINER FROM THIS LOCATION
AA	19	4	INSTALL CIPP LINER FROM THIS LOCATION
BB	20	4	INSTALL CIPP LINER FROM THIS LOCATION
CC	21	4	INSTALL CIPP LINER FROM THIS LOCATION

**LEGEND:**

- VEHICLE RAMP, PER DETAIL SHEET 17
- LANE CLOSURE
- LANE CLOSURE, FOR INVERSION AREA/EQUIPMENT (APPROX 10'x40')



**Call before you Dig**  
 1-800-227-2800

**Safety Alert**  
 Call before you Overhead  
 593-6111

NO.	DATE	DESCRIPTION

**DEPARTMENT OF PUBLIC WORKS**

**ENGINEERING DESIGN SECTION**

CITY ENGINEER: CHARLES KAIKOWSKI JR., P.E.  
 PROJECT MANAGER: THERESA M. HANRAHAN, P.E.  
 DESIGNED BY: CMG  
 DRAWN BY: RUS  
 CHECKED BY: CMG  
 HORIZONTAL SCALE: 1" = 40'  
 VERTICAL SCALE: NONE  
 DATE: 01/21/04

SAHARA AVENUE SANITARY SEWER REHABILITATION - PHASE III

TITLE: SAHARA AVENUE SANITARY SEWER REHABILITATION - PHASE III

SHEET: CIPP LINER LANE CLOSURES PLAN STA 176+00 TO STA 200+00

EXPIRES 8/30/05

Sheet

25 of 28

DRAWING NO. 307-V826

66744

BID NUMBER: 04.1730.01