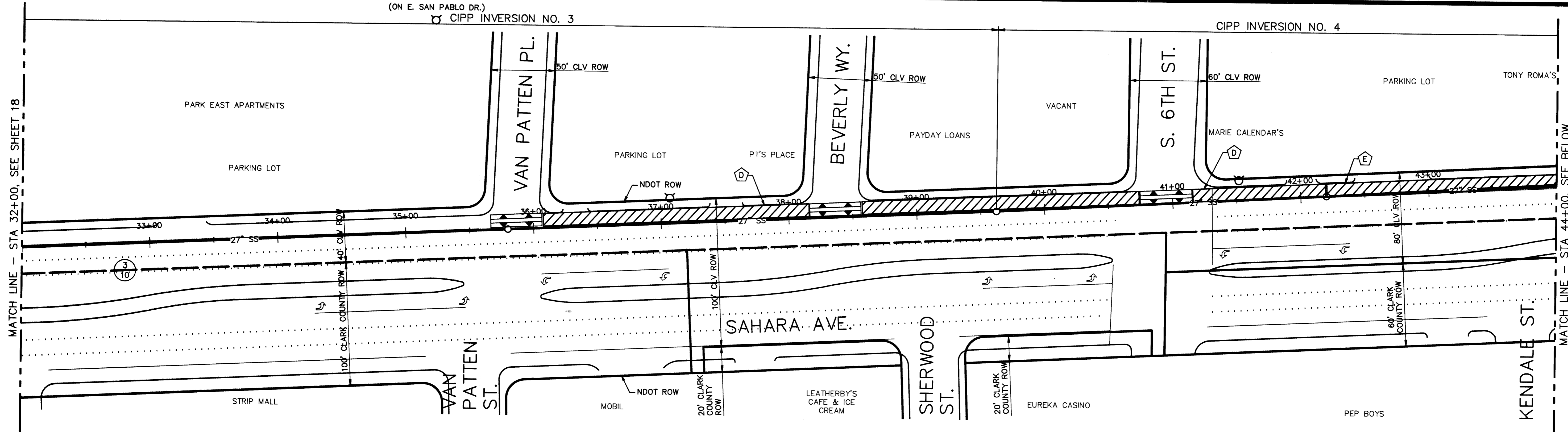


(ON E. SAN PABLO DR.)  
 CIPP INVERSION NO. 3

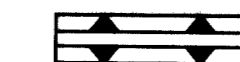


CIPP INVERSION NO. 4



**CIPP LINER INSTALLATION NOTES:**

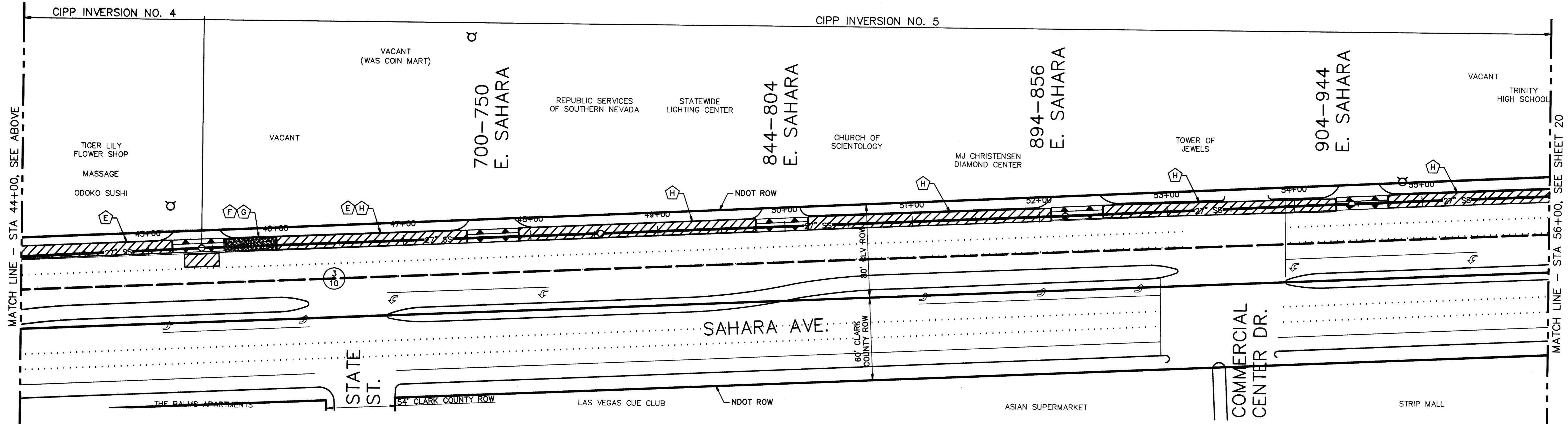
NOTE	INVERSION NO.	ESTIMATED DURATION (DAYS)	ACTIVITY
D	3	4	TEMPORARY FLOW BYPASSING
D/E	4	8	TEMPORARY FLOW BYPASSING
F	4	4	INSTALL CIPP LINER FROM THIS LOCATION
G	5	4	INSTALL CIPP LINER FROM THIS LOCATION
D/E/H	5	12	TEMPORARY FLOW BYPASSING

**LEGEND:**

-  VEHICLE RAMP, PER DETAIL SHEET 17
-  LANE CLOSURE
-  LANE CLOSURE, FOR INVERSION AREA/EQUIPMENT (APPROX 10'x40')

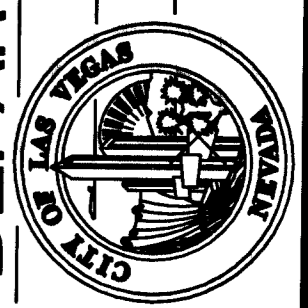
CIPP INVERSION NO. 4

CIPP INVERSION NO. 5

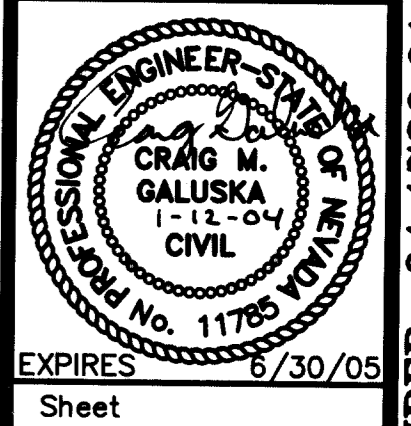


DEPARTMENT OF PUBLIC WORKS  
 ENGINEERING DESIGN SECTION

CITY ENGINEER: CHARLES KAIKOWSKI JR. P.E.  
 PROJECT MANAGER: THERESA M. HANRAHAN, P.E.  
 DESIGNED BY: CMG  
 DRAWN BY: RJS  
 CHECKED BY: CMG  
 HORIZONTAL SCALE: 1" = 40'  
 VERTICAL SCALE: NONE  
 DATE: 01/21/04



TITLE: SAHARA AVENUE SANITARY SEWER REHABILITATION - PHASE III  
 SHEET: CIPP LINER LANE CLOSURES PLAN STA 32+00 TO STA 56+00



EXPIRES 8/30/05  
 19 of 28  
 DRAWING NO. 307-V826

BID NUMBER: 04.1730.01  
 SAHARA AVENUE SANITARY SEWER REHABILITATION - PHASE III

66738

Call before you Dig  
 1-800-227-2800

SAFETY ALERT  
 Call before you Overhead  
 593-6111