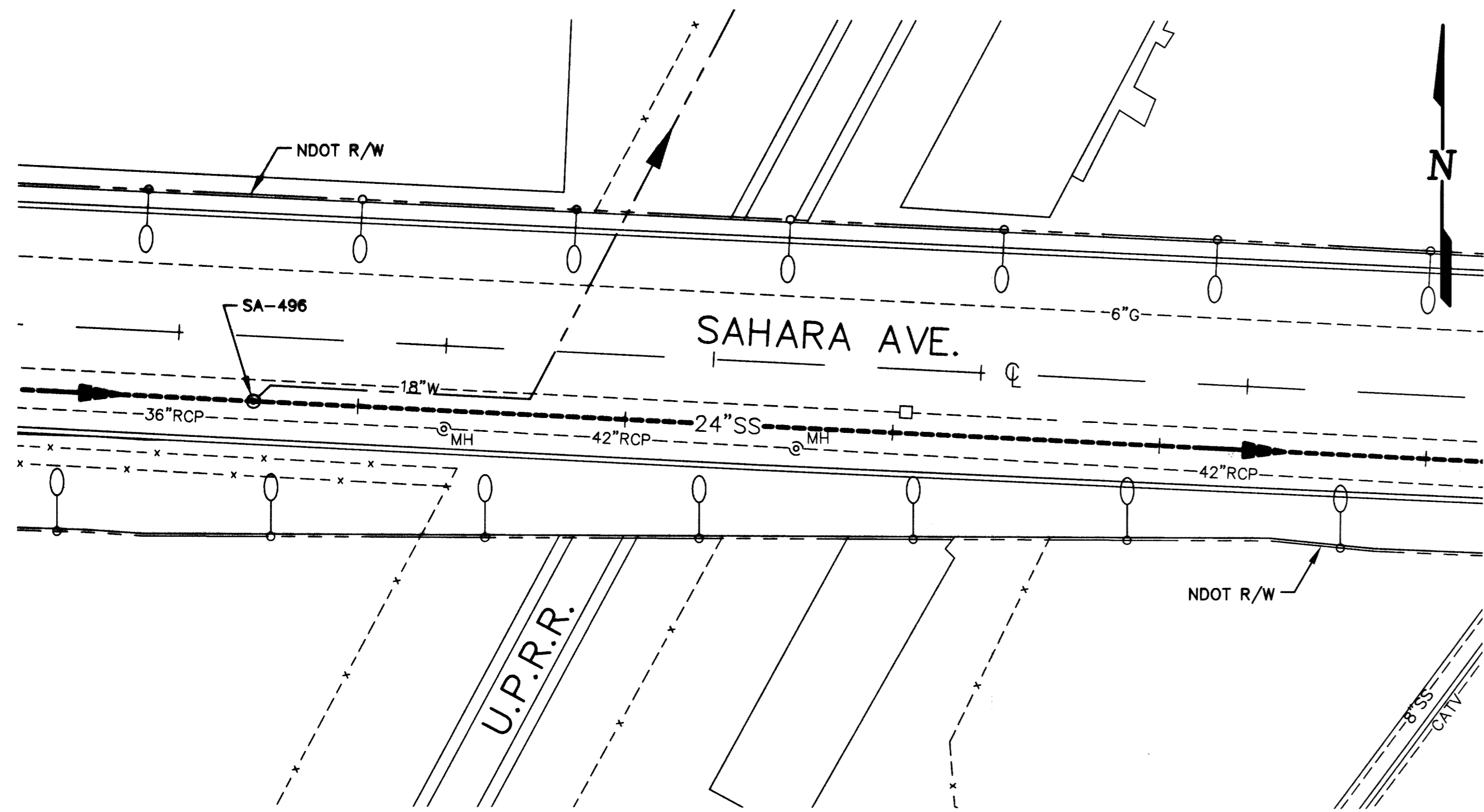
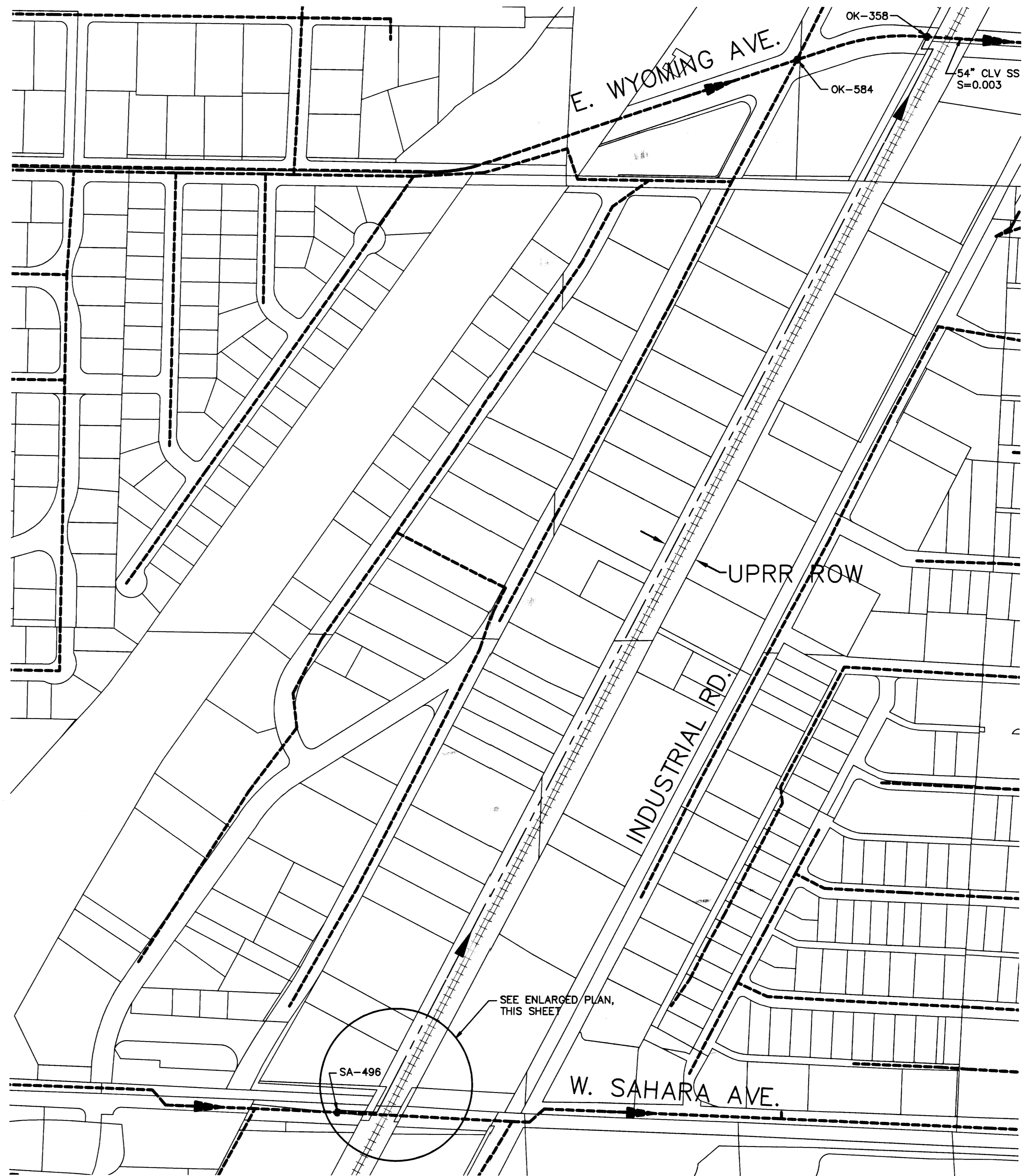


FLOW BYPASSING DETAIL NO. 1
1" = 40'



ENLARGED PLAN
1" = 40'



FLOW BYPASSING DETAIL NO. 2
1" = 200'

NO.	DATE	DESCRIPTION	APP'D

DEPARTMENT OF PUBLIC WORKS
ENGINEERING DESIGN SECTION

CITY ENGINEER: CHARLES KALKOWSKI, JR., P.E.
PROJECT MANAGER: THERESA M. HARRAHAN, P.E.

DESIGNED BY: CMG
DRAWN BY: RJS
CHECKED BY: CMG

HORIZONTAL SCALE: AS NOTED
VERTICAL SCALE: NONE
DATE: 01/21/04

TITLE: SAHARA AVENUE SANITARY SEWER REHABILITATION - PHASE III
SHEET: FLOW BYPASSING DETAILS

PROFESSIONAL ENGINEER - STATE OF MISSOURI
GRAN M. GALUSKA
1-1-04
CIVIL
No. 11788

EXPIRES 8/30/05
Sheet
16 of 28
DRAWING NO. 307-V826

Call before you Dig
1-800-227-2600

Call before you Overhead
593-6111

66735

BID NUMBER: 04.1730.01