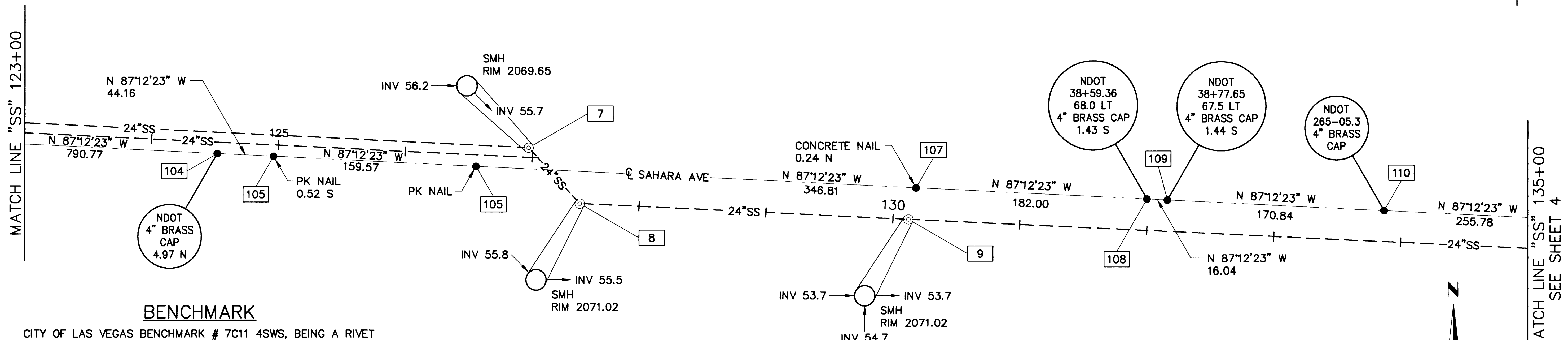
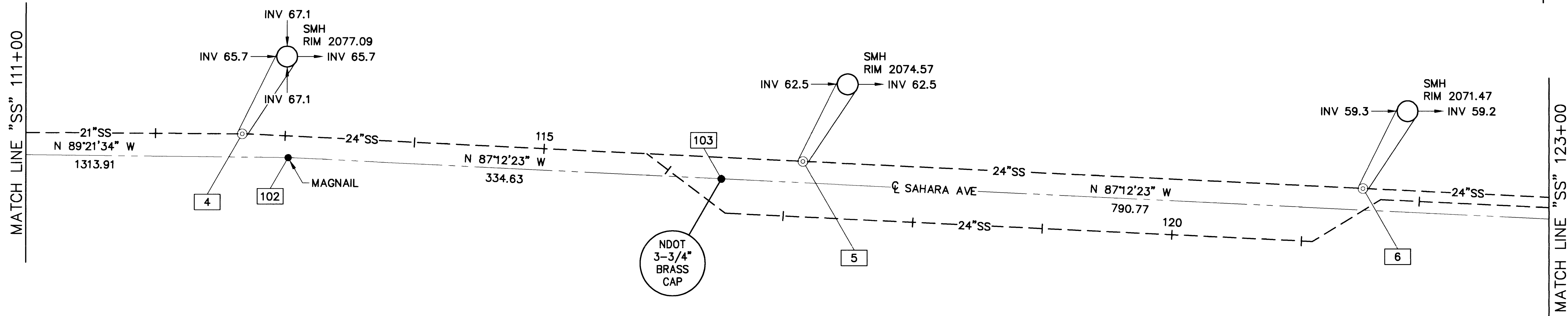
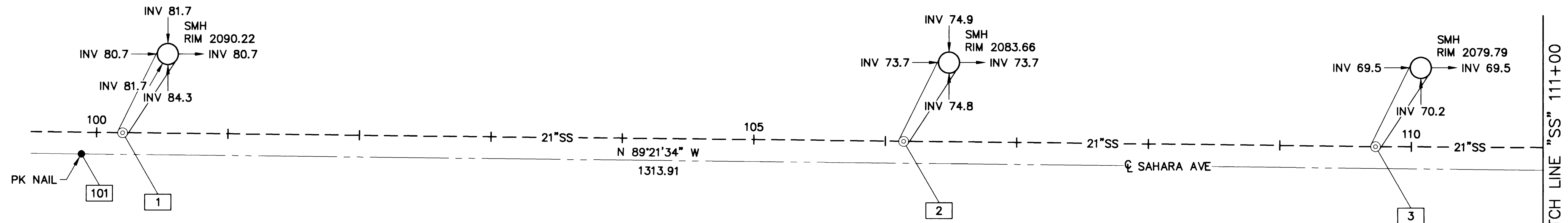


U:\CBB42\SAHARA\CONSTR\842SCPO1.DWG 12-12-00 11:54:49 am EST VSH



**BENCHMARK**

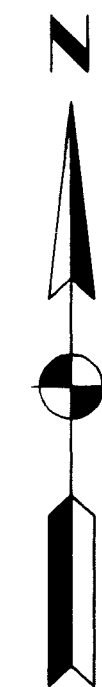
CITY OF LAS VEGAS BENCHMARK # 7C11 4SWS, BEING A RIVET AND PLATE IN TOP OF CURB, NE RETURN RANCHO ROAD AND SAHARA AVE.  
ELEV = 632.6872 METERS (2075.74 FEET) NAVD 88

**BASIS OF BEARINGS**

N 87°12'23" W, BEING THE SOUTH LINE OF THE SE 1/4 OF SECTION 4, T. 21 S., R. 61 E., M.D.M., CLARK COUNTY, NEVADA, PER RECORD OF SURVEY FILE 67, PAGE 23, ON FILE AT THE OFFICE OF THE RECORDER.

**REFERENCE**

RECORD OF SURVEY FILE 67, PAGE 23



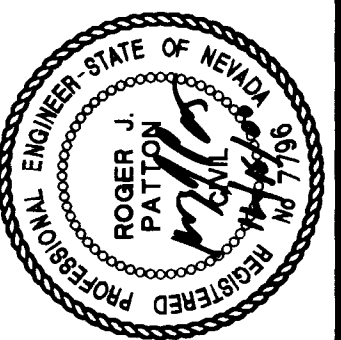
DATE	REVISIONS

W.A. # W04873  
 SCALE (V): NONE  
 DATE: OCT 20, 2000  
 DESIGN BY: TCC  
**ENGINEERING DESIGN SECTION**  
 CITY ENGINEER: CHARLES KAIKOWSKI, JR., P.E.  
 PROJECT MANAGER: THERESA M. HANRAHAN, P.E.



DEPARTMENT OF PUBLIC WORKS  
 PROJECT: SAHARA AVE SANITARY SEWER - PHASE II  
 TEDDY DR TO LAS VEGAS BLVD

SHEET: CONTROL POINTS "SS" 99+50 TO "SS" 135+00  
 SEE SHEET 4



DRAWING NO. 307-V791  
 4/12

SAHARA AVENUE SANITARY SEWER - PHASE II