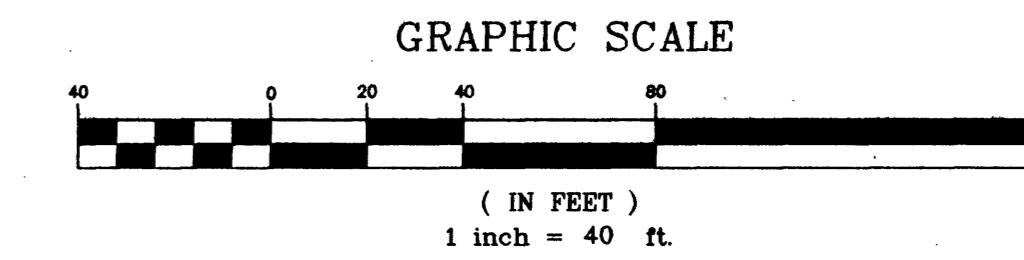


NOTE "A"

NEVADA POWER, SPRINT CENTRAL TELEPHONE, COX COMMUNICATIONS, AND SOUTHWEST GAS SHOWN FOR INFORMATION ONLY. THE ENGINEER MAKES NO GUARANTEE THAT ALL UTILITIES ARE SHOWN OR THAT THEIR LOCATIONS ARE DEPICTED ACCURATELY. CONTACT NEVADA POWER, SPRINT CENTRAL TELEPHONE, AND SOUTHWEST GAS FOR AS-BUILT DRAWINGS. CONTRACTOR TO COORDINATE WITH COX COMMUNICATIONS, SOUTHWEST GAS CORPORATION, SPRINT CENTRAL TELEPHONE OF NEVADA AND NEVADA POWER COMPANY FOR LOCATION AND PROTECTION OF THEIR FACILITIES.

NOTE "B"

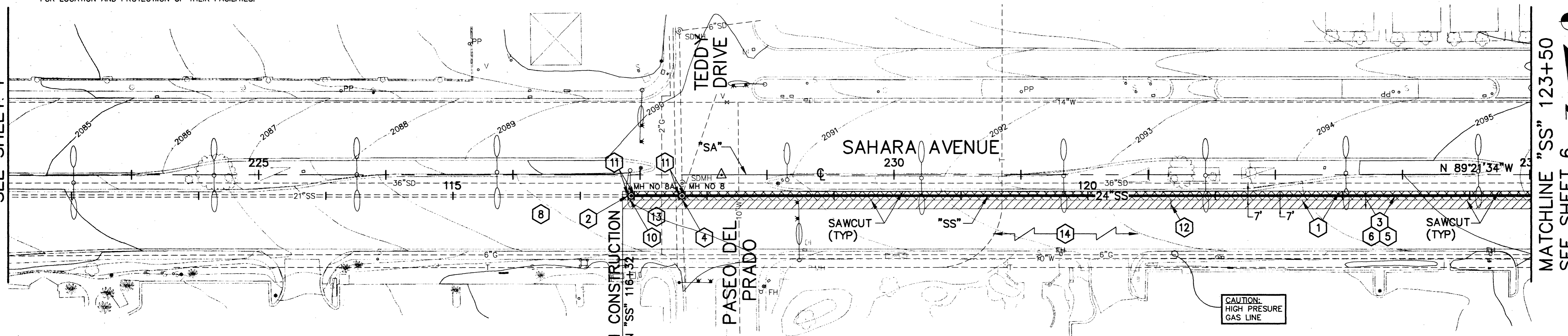
THE DEPTH BELOW GRADE OF THE VARIOUS UTILITIES DEPICTED ON THE PLANS VARIES THROUGHOUT THE PROJECT AREA. THE CONTRACTOR SHALL CONTACT USA PRIOR TO THE START OF CONSTRUCTION. THE CONTRACTOR SHALL EXERCISE EXTREME CARE TO LOCATE ALL UTILITIES PRIOR TO EXCAVATION, AND SUPPORT AND PROTECT ALL AFFECTED UTILITIES DURING CONSTRUCTION.



Revised
LVVWD
5-3-00
DATE

MATCHLINE "SS" 111+50
SEE SHEET 4

MATCHLINE "SS" 123+50
SEE SHEET 6

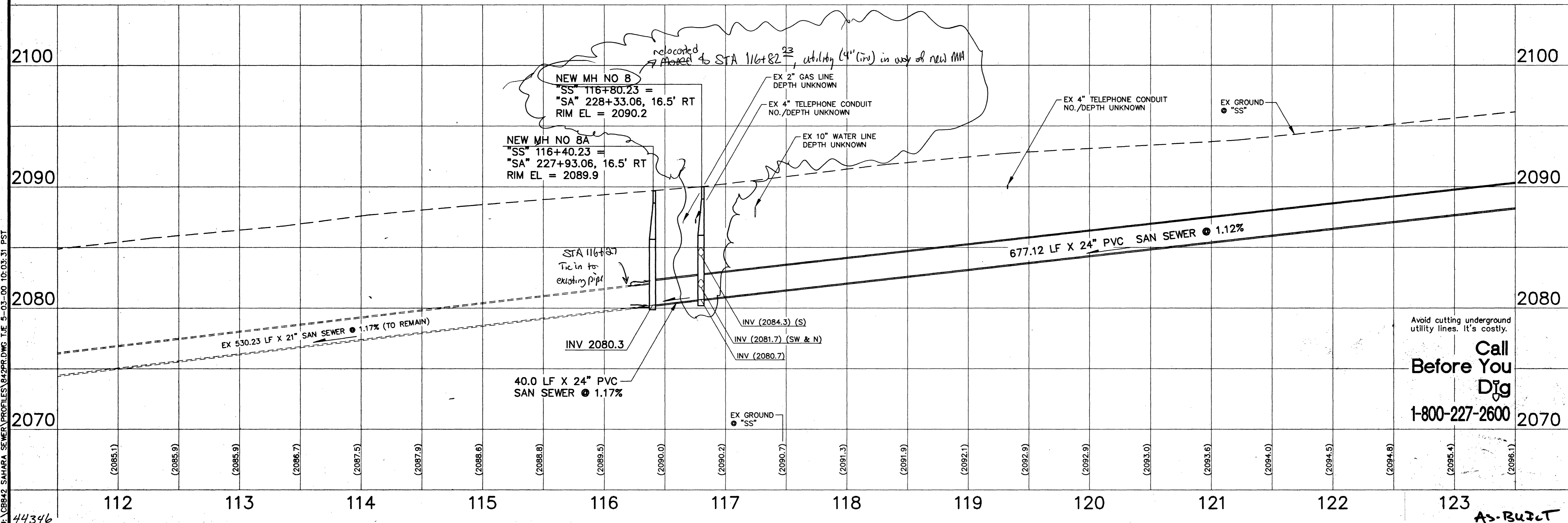


CONSTRUCTION ITEMS

NOTE: SEE DETAIL SHEET 9 FOR "WORK ZONE"

- | | | | |
|---|--|---|---|
| <ul style="list-style-type: none"> 1 "SS" 116+32 TO "SS" 123+50, 3.5' LT TO 3.5' RT 2 "SS" 110+86.10 TO "SS" 123+57.35 3 "SS" 116+80.23 TO "SS" 123+50 4 "SS" 116+80.23 | <ul style="list-style-type: none"> 5 SAWCUT AND REMOVE EXISTING PAVEMENT. (NO PAY ITEM) 6 BYPASS PUMPING. MAINTAIN FLOWS AROUND CONSTRUCTION AREA. 7 EXCAVATE AND REMOVE EXISTING 21-INCH REINFORCED CONCRETE PIPE SANITARY SEWER AND BEDDING. (NO PAY ITEM) 8 REMOVE EXISTING BRICK MANHOLE AND REPLACE WITH NEW 60-INCH DIAMETER PRECAST MANHOLE PER SPECIFICATIONS AND DETAILS. | <ul style="list-style-type: none"> 9 "SS" 116+80.23 TO "SS" 123+50 INSTALL NEW BEDDING, CONSTRUCT 24-INCH POLYVINYL CHLORIDE SANITARY SEWER AND BACKFILL TRENCH PER SPECIFICATIONS AND DETAILS. 10 "SS" 116+72 TO "SS" 123+50 15' LT TO 10' RT RECONSTRUCT PAVEMENT BOX PER SPECIFICATIONS AND DETAILS. 11 "SS" 113+50± TO "SS" 117+00± REPAIR AND REINSTALL DAMAGED LOOP DETECTION SYSTEM PER SPECIFICATIONS AND STANDARD DRAWINGS. 12 "SS" 116+40.23 CONSTRUCT NEW 60-INCH DIAMETER PRECAST MANHOLE PER SPECIFICATIONS AND DETAILS. | <ul style="list-style-type: none"> 13 "SS" 116+37.23; "SS" 116+43.23 "SS" 116+77.23; "SS" 116+83.23 CONSTRUCT CONCRETE CUT-OFF COLLAR AROUND SANITARY SEWER AT MANHOLE PER DETAIL, SHEET 9. (NO PAY ITEM) 14 "SS" 116+32 TO "SS" 123+50, 3.5' RT TO 10.5' RT COLD MILL AND OVERLAY PAVEMENT PER DETAIL, SHEET 9. 15 "SS" 116+50± REPLACE STOP BAR AND CROSSWALK STRIPING PER SPECIFICATIONS AND DETAIL, SHEET 9. 16 "SS" 116+32 TO "SS" 123+50 RESTRIPE LANE MARKINGS PER SPECIFICATIONS AND DETAIL, SHEET 9. |
|---|--|---|---|

U:\C08942 SAHARA SEWER\PROFILES\842PR.DWG T.E. 5-03-00 10:03:31 PST



DATE		REVISIONS		W.A. # W4873	DESIGN BY: TC
SCALE (V): 1" = 40'	SCALE (H): 1" = 40'	DATE: APRIL 4, 2000	PROJECT MANAGER: THERESA M. HANRAHAN, P.E.	ENGINEERING DESIGN SECTION	
DEPARTMENT OF PUBLIC WORKS PROJECT: SAHARA AVENUE SEWER PLAN AND PROFILE "SS" 111+50 TO "SS" 123+50 VALLEY VIEW BLVD TO TEDDY DR					
DRAWING NO. 307-7791					5/9

As-Built