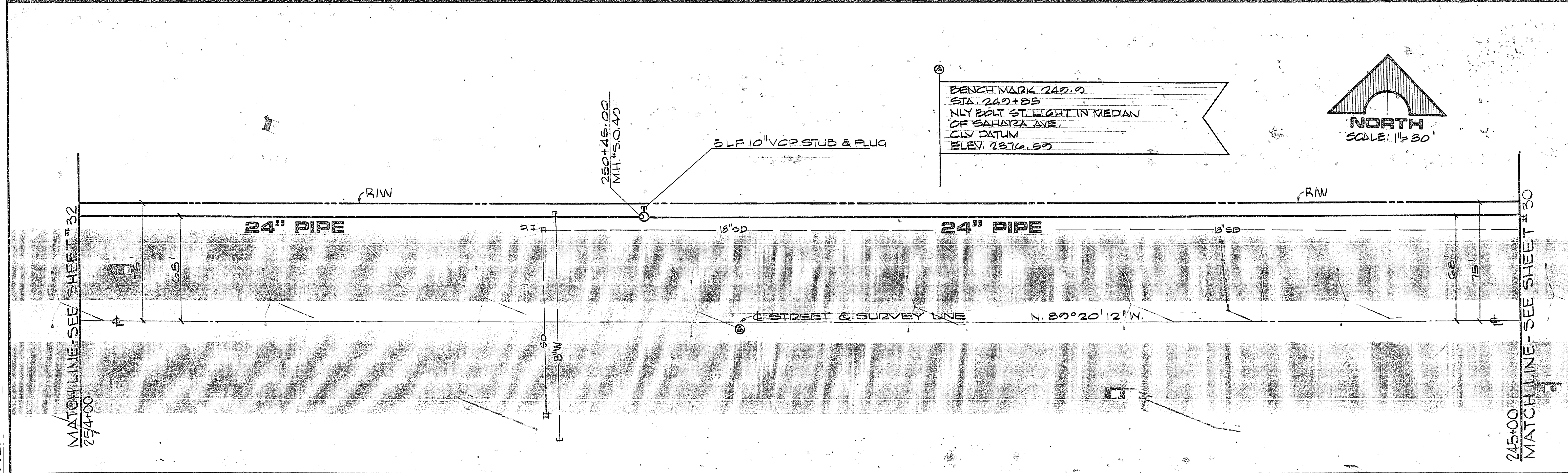
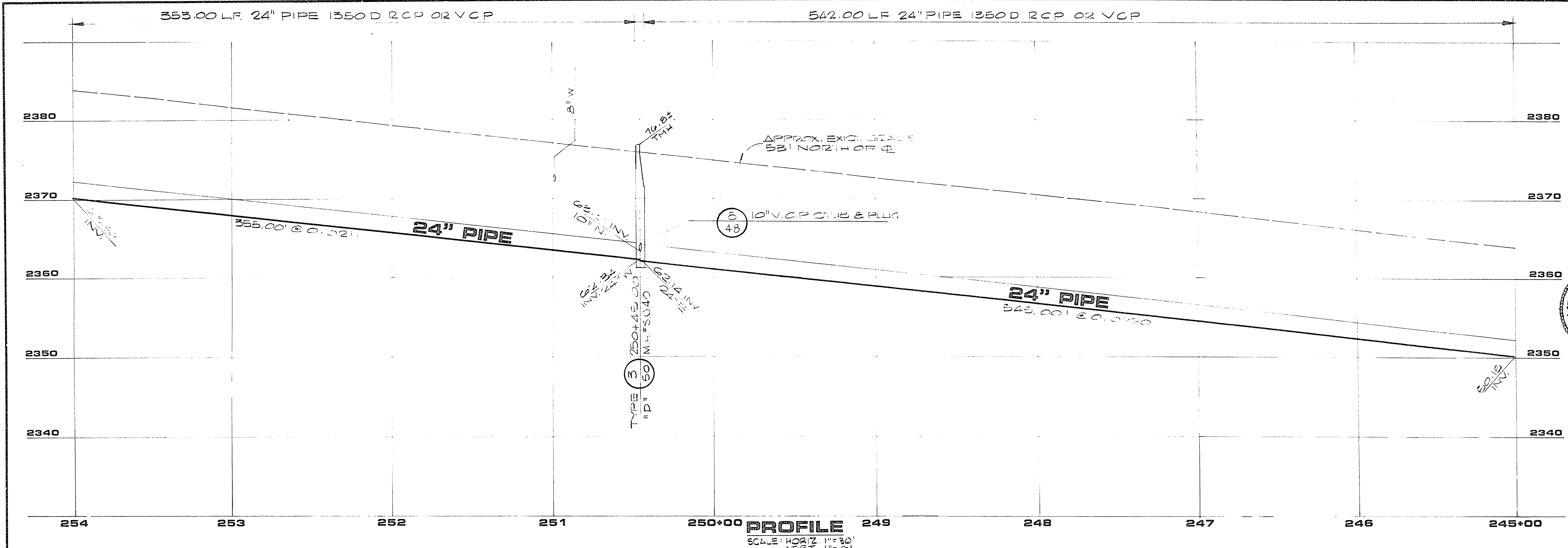


JOB NO. 412.140



SAHARA

AVENUE

AS BUILT DRAWING

307-V563

DESCRIPTION	AS BUILT - NO REVISIONS
DATE	4/9/88
REV	1 2/27/87
DATE	2/27/87
REV	
DATE	
REV	
DATE	
REV	

REGISTERED PROFESSIONAL ENGINEER STATE OF NEVADA
MICHAEL D. ROSS
CIVIL

G. C. WALLACE
Consulting Engineers, Inc.
1100 East Sahara Ave. • Las Vegas, Nevada 89104 • 732-3330

Department of Public Services
SAHARA - OAKLEY SEWER INTERCEPTOR
PLAN & PROFILE 245+00 TO 254+00

SHEET
31
OF 65 SHEETS