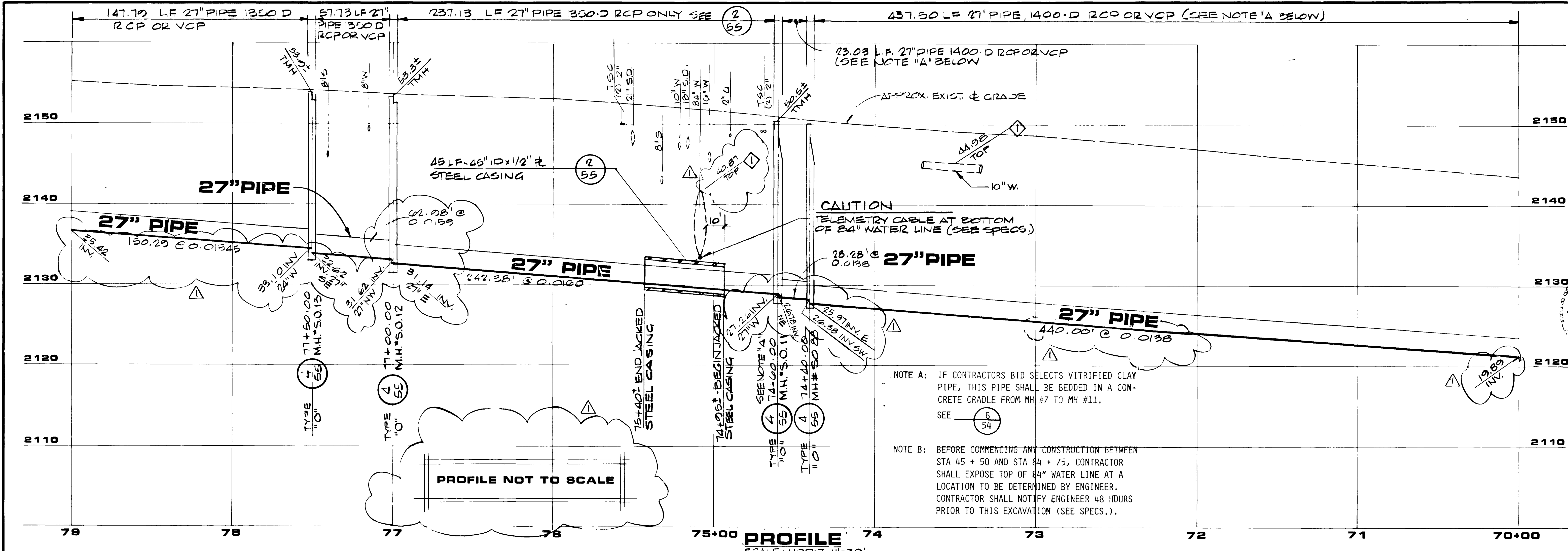
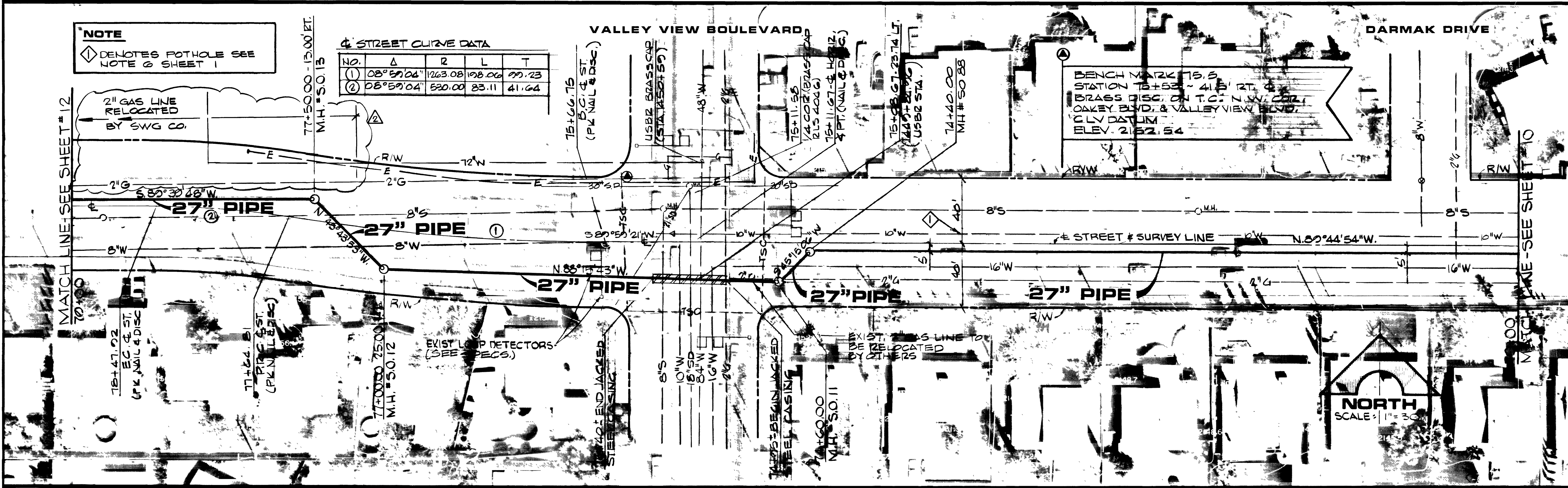


JOB NO. 412.140

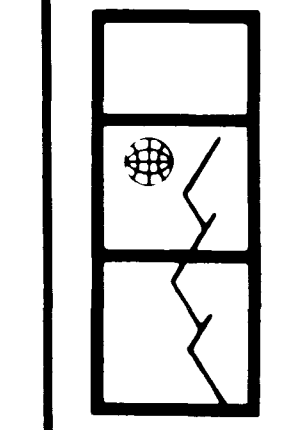


NOTE A: IF CONTRACTORS BID SELECTS VITRIFIED CLAY PIPE, THIS PIPE SHALL BE BEDDED IN A CONCRETE CRADLE FROM MH #7 TO MH #11. SEE 6 54

NOTE B: BEFORE COMMENCING ANY CONSTRUCTION BETWEEN STA 45 + 50 AND STA 84 + 75, CONTRACTOR SHALL EXPOSE TOP OF 84" WATER LINE AT A LOCATION TO BE DETERMINED BY ENGINEER. CONTRACTOR SHALL NOTIFY ENGINEER 48 HOURS PRIOR TO THIS EXCAVATION (SEE SPECS.).

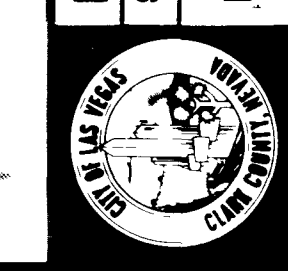


REV	DATE	DESCRIPTION
1	10/26/10	ISSUE FOR PERMITS TO BE OBTAINED
2	11/10/10	ISSUE FOR BIDDING
3	11/10/10	ISSUE FOR CONSTRUCTION

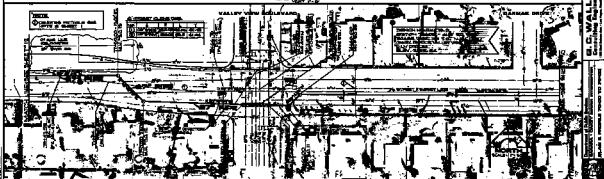
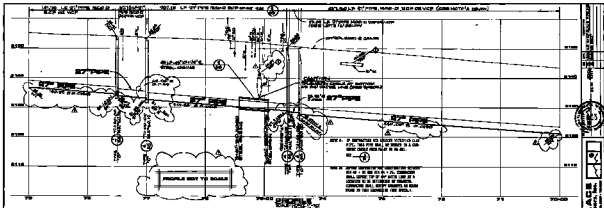


G. G. WALLACE
Consulting Engineers, Inc.
1100 East Sahara Ave. • Las Vegas, Nevada 89104 • 732-3330

Department of Public Services
SAHARA - OAKLEY SEWER INTERCEPTOR
PLAN & PROFILE 70+00 TO 79+00



SHEET
11
OF 65 SHEETS



S. C. WALLACE
 Civil Engineer, Inc.
 1111 11th Street, N.W., Washington, D.C.
 11