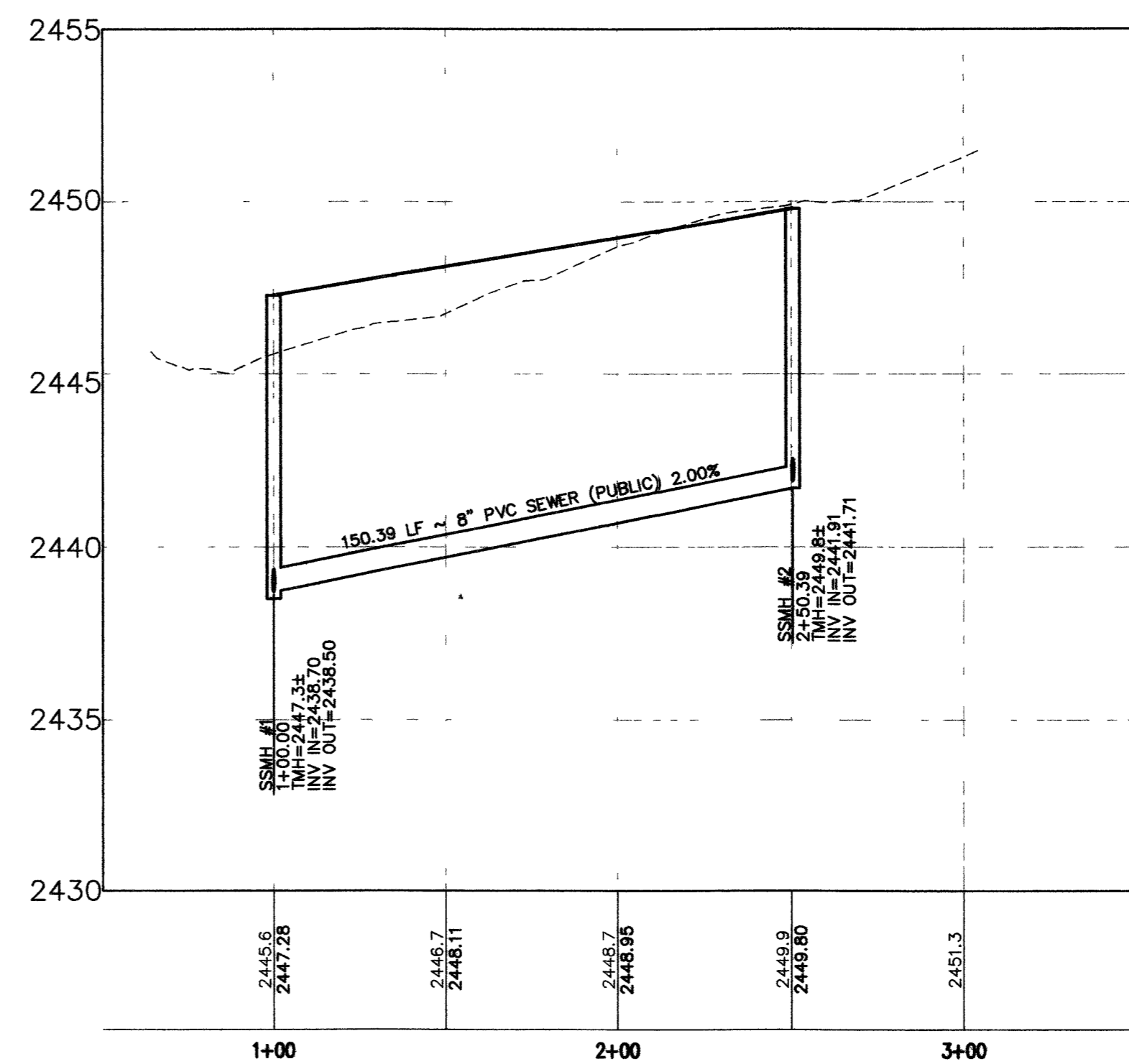
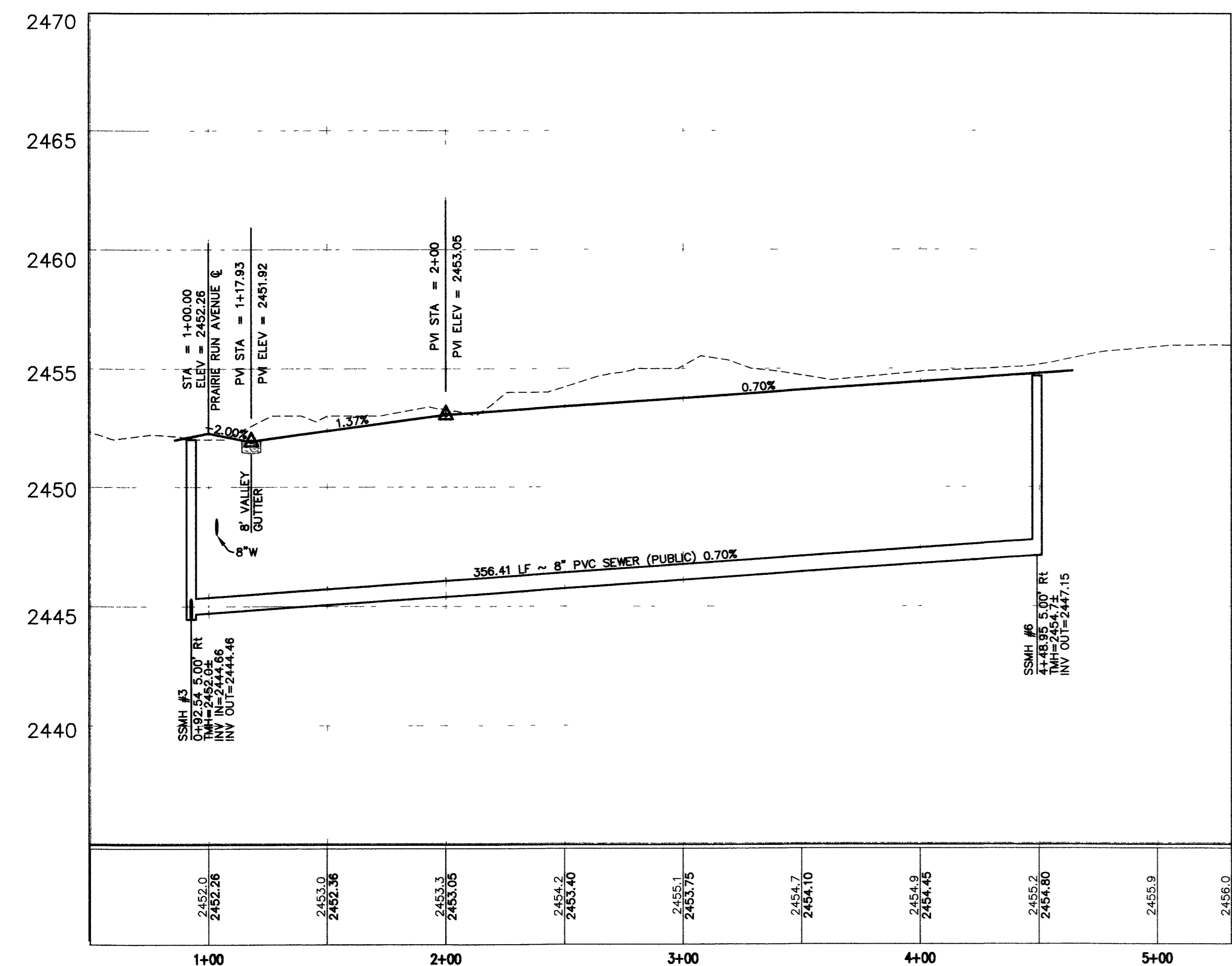
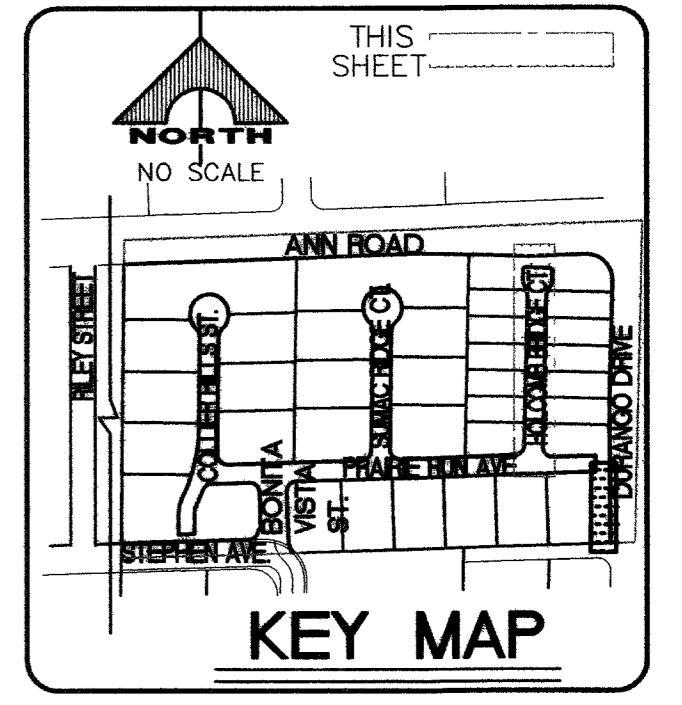


BACK OF CURB CURVE TABLE

CURVE	DELTA	RADIUS	LENGTH	TANGENT
C29	82°21'14"	20.00'	39.24'	20.84'
C30	87°36'46"	20.00'	30.56'	19.19'
C31	23°44'58"	30.00'	12.44'	6.31'
C32	90°00'00"	5.00'	7.85'	5.00'
C33	90°00'00"	5.00'	7.85'	5.00'
C34	23°44'58"	30.00'	12.44'	6.31'
C43	90°00'00"	5.00'	7.85'	5.00'
C44	90°00'00"	5.00'	7.85'	5.00'

CENTERLINE LINE TABLE

LINE	LENGTH	BEARING
L30	348.10	N00°44'49"E



- CONSTRUCTION NOTES**
- (A) CONSTRUCT 8" CROSS GUTTER PER USD DRAWING NO. 228
 - (B) CONSTRUCT 30" ROLL TYPE CURB AND GUTTER PER USD DRAWING NO. 217A
 - (C) CONSTRUCT "L" TYPE CURB AND GUTTER PER USD DRAWING NO. 216
 - (D) CONSTRUCT CONCRETE SIDEWALK PER USD DRAWING NO. 234
 - (E) REMOVE EXISTING "L" TYPE CURB AND GUTTER
 - (F) REMOVE EXISTING CROSS GUTTER
 - (G) REMOVE EXISTING AC PAVEMENT

NOTE: ALL PRIVATE ST. ARE P.U.E.'S, PUBLIC SEWER EASEMENTS AND PUBLIC DRAINAGE EASEMENTS TO BE PRIVATELY MAINTAINED.

PLAN AND PROFILE
HOR. : 1" = 40' VERT. : 1" = 4'

PLAN AND PROFILE
HOR. : 1" = 40' VERT. : 1" = 4'

BASIS OF BEARING
THE BEARING OF NORTH 88°50'50" EAST, BEING THE SOUTH LINE OF THE NORTHWEST QUARTER (NW 1/4) OF THE NORTHEAST QUARTER (NE 1/4) OF SECTION 32, TOWNSHIP 19 SOUTH, RANGE 60 EAST, M.D.M., AS SHOWN BY SURVEY IN FILE 99, PAGE 93 OF PARCELS MAPS ON FILE IN THE CLARK COUNTY RECORDER'S OFFICE, CLARK COUNTY, NEVADA

BENCHMARK

NO.	STATION	DESCRIPTION	NAV088 DATUM	NAV088 DATUM
405	CLV BM BLYSD 33NS	RIVET & PLATE IN TOP OF CURB SE CORNER OF ANN RD AND DURANGO	2448.85 (FEET)	746.4111 (METERS)



NOTE
CONTRACTOR TO VERIFY THE HORIZONTAL AND VERTICAL LOCATION OF EXISTING UTILITIES PRIOR TO CONSTRUCTION. REPORT ANY DISCREPANCIES TO ENGINEER IMMEDIATELY.

WATER MAIN JOINT DEFLECTION (PVC 4"-24")
PVC PIPE SHALL BE DEFLECTED AT THE JOINT ONLY. THE MAXIMUM ALLOWABLE DEFLECTION SHALL BE ONE (1) DEGREE PER JOINT WITH MINIMUM RADIUS OF CURVATURE OF 1,150 FEET, PER UOACS 2.06.01 AND 2.06.02.
FOR CHANGES IN DIRECTION EXCEEDING THE MAXIMUM ALLOWABLE JOINT DEFLECTION, FITTINGS SHALL BE USED.

APPROVED FOR CONSTRUCTION
LAS VEGAS VALLEY WATER DISTRICT
PROJECT H109420

CLARK COUNTY DEPARTMENT OF DEVELOPMENT SERVICES
Acceptance of plans for filing
By _____
Acceptance of these plans for filing shall not be construed to be a permit for or an approval of any violation of any of the provisions of the state or county laws and / or specifications Clark County shall be held free from damages which may result from the construction of the improvements from the engineering design depicted herein.
NOTE: Power poles and / or other existing facilities not in proper location based on proposed improvements shown hereon will be re-located at no expense to Clark County.

G.C. WALLACE, INC.
Engineers/Planners/Surveyors
1555 SOUTH RAINBOW BLVD., LAS VEGAS, NEVADA 89146
TELEPHONE: (702) 804-2000 • FAX: (702) 804-2299

PINNACLE HOMES
SABLE OAKS II
HOLCOMB BRIDGE COURT
AND LINE 'A' PLAN AND PROFILE

DRAWING
C-11
11 OF 16 SHEETS