

CONSTRUCTION NOTES

1. CONSTRUCT 8" WIDE CROSS-GUTTER PER DETAIL CCAUSD #228 (SEE DETAIL ON SHEET D-2)
2. CONSTRUCT 4" WIDE BY 4" THICK SIDEWALK PER CCAUSD #234
3. CONSTRUCT SIDEWALK RAMP USING ARMOR TILE TRUNCATED DOMES OR EQUIVALENT PER CCAUSD #235, CASE 1
4. CONSTRUCT ROLL CURB PER DETAIL CCAUSD #217A
5. CONSTRUCT "L" TYPE CURB PER CCAUSD #216
6. CONSTRUCT 2" AC ON 4" TYPE II A.B ON 6" TYPE I OR NATIVE, SEE SECTION "C", SHEET D-1
7. SAWCUT, REMOVE AND REPLACE EXISTING PAVEMENT PER PROP. STREET SECTION
8. CONSTRUCT 10' TRANSITION FROM ROLL CURB TO "L" CURB SEE DETAIL "X", SHEET D-2
9. CONSTRUCT 5' WIDE BY 4" THICK SIDEWALK PER CCAUSD #234
10. CONTRACTOR TO VERIFY ELEV. OF EXIST. CURB AND GUTTER, P.W.M.T., STORM DRAIN, RETAINING WALL ELEVATIONS, AND SDWK PRIOR TO CONST. NOTIFY ENGINEER OF ANY CONFLICTS
11. CONST. SIDEWALK UNDERDRAIN PER CCAUSD NO. 236
12. CONST. "A" TYPE MEDIAN CURB PER CCAUSD #219
13. CONST. DEPRESSED CURB PER CCAUSD #227
14. CONST. BLOCK WALL OPENING PER SECTION "C", SHEET D-4
15. CONST. 4" AC ON 4" TYPE II A.B ON 9" TYPE I, SEE SECTION "A", SHEET D-1
16. CONST. 4" AC ON 4" TYPE II A.B ON 6" TYPE I, SEE SECTION "C", SHEET D-3
17. CONST. 4" AC ON 4" TYPE II A.B ON 9" TYPE I, SEE SECTION "E", SHEET D-1
18. CONST. 3" AC ON 9" TYPE II A.B, SEE SECTION "B", SHEET D-1
19. CONST. 3" AC ON 9" TYPE II A.B, SEE SECTION "B", SHEET D-3
20. CONSTRUCT CONC. CUTOFF WALL PER SECTION "C", SHEET D-3
21. CONCRETE ENCASUREMENT PER UDACS SEC. 2.19
22. CONST. BLOCK WALL OPENING PER DETAIL "D" ON SHT. D-6

EASEMENT NOTES

1. 37' DRAINAGE EASEMENT, LVWD WATER EASEMENT, PUBLIC UTILITY EASEMENT (TO BE MAINTAINED BY H.O.A.) AND CLV PUBLIC SEWER EASEMENT
2. 20' DRAINAGE EASEMENT (TO BE MAINTAINED BY H.O.A.) AND CLV PUBLIC SEWER EASEMENT
3. DRAINAGE EASEMENT TO BE PRIVATELY MAINTAINED BY H.O.A. (SEE DIMENSION ON PLAN FOR EASEMENT WIDTH)

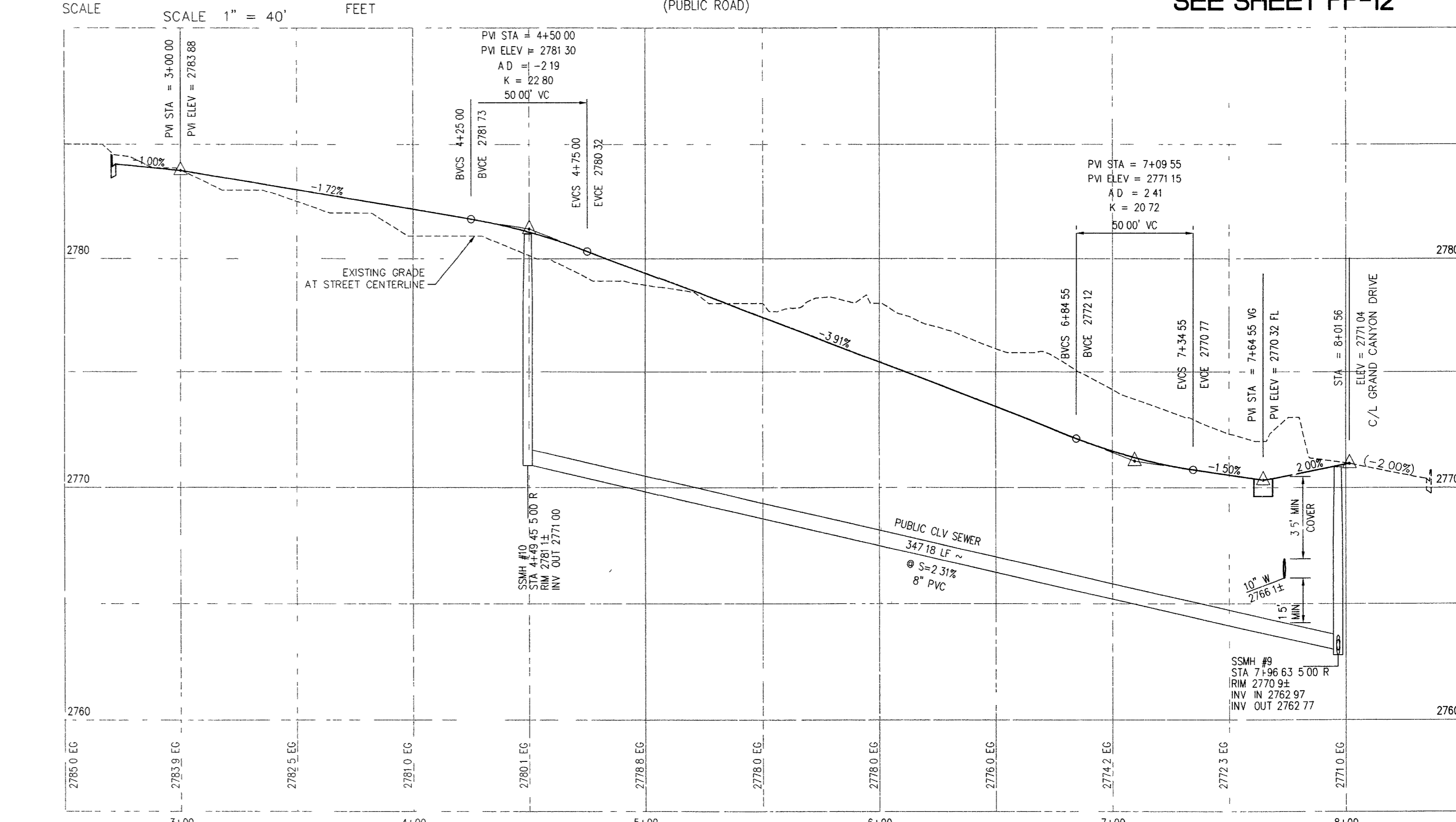
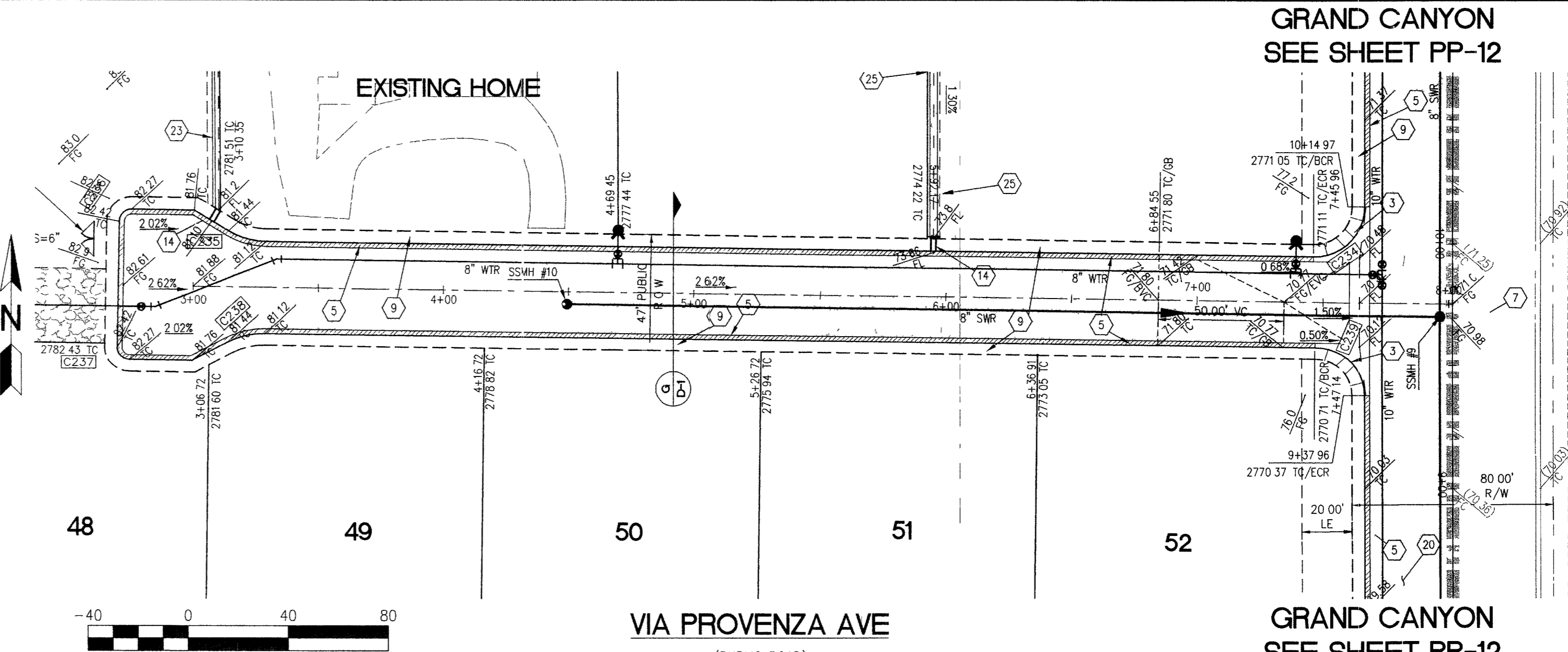
BENCHMARK
BENCHMARK FOUND CITY OF LAS VEGAS RIVET AND ROUND PLATE IN CONCRETE CYLINDER, SOUTHEAST CORNER OF ELKHORN RD AND CONQUISTADOR ST
BM NO. 66 STATION 8LV90 19NNW6 ELEVATION = 2803.77 (NAVD 88)

BASIS OF BEARING
THE BASIS OF BEARINGS FOR THIS SURVEY IS BASED ON THE FOUND AND HELD MONUMENTS MARKING THE SOUTHERLY LINE OF THE SOUTHWEST QUARTER (SW 1/4) OF THE SOUTHWEST QUARTER (SW 1/4) OF SECTION 13, T19S, R8E, HDM, CLARK COUNTY, NEVADA PER RECORD OF SURVEY BOOK 123, PAGE 32, CLARK COUNTY RECORDER'S OFFICE AS SOUTH 88°46'46" EAST

CLARK COUNTY DEPARTMENT OF DEVELOPMENT SERVICES
ACCEPTANCE OF PLANS FOR FILING

BY
ACCEPTANCE OF THESE PLANS FOR FILING SHALL NOT BE CONSTRUED TO BE A PERMIT FOR OR AN APPROVAL OF ANY VIOLATION OF ANY OF THE PROVISIONS OF THE STATE OR COUNTY LAWS AND/OR SPECIFICATIONS CLARK COUNTY SHALL BE HELD FREE FROM DAMAGES WHICH MAY RESULT FROM THE CONSTRUCTION OF THE IMPROVEMENTS FROM THE ENGINEERING DESIGN DEPICTED HEREIN

NOTE POWER POLES AND/OR OTHER EXISTING FACILITIES NOT IN PROPER LOCATION BASED ON PROPOSED IMPROVEMENTS SHOWN HEREIN WILL BE RELOCATED AT NO EXPENSE TO CLARK COUNTY



CONSTRUCTION NOTES

1. CONSTRUCT 8" WIDE CROSS-GUTTER PER DETAIL CCAUSD #228 (SEE DETAIL ON SHEET D-2)
2. CONSTRUCT 4" WIDE BY 4" THICK SIDEWALK PER CCAUSD #234
3. CONSTRUCT SIDEWALK RAMP USING ARMOR TILE TRUNCATED DOMES OR EQUIVALENT PER CCAUSD #235, CASE 1
4. CONSTRUCT ROLL CURB PER DETAIL CCAUSD #217A
5. CONSTRUCT "L" TYPE CURB PER CCAUSD #216
6. CONSTRUCT 2" AC ON 4" TYPE II A.B ON 6" TYPE I OR NATIVE, SEE SECTION "C", SHEET D-1
7. SAWCUT, REMOVE AND REPLACE EXISTING PAVEMENT PER PROP. STREET SECTION
8. CONSTRUCT 10' TRANSITION FROM ROLL CURB TO "L" CURB SEE DETAIL "X", SHEET D-2
9. CONSTRUCT 5' WIDE BY 4" THICK SIDEWALK PER CCAUSD #234
10. CONTRACTOR TO VERIFY ELEV. OF EXIST. CURB AND GUTTER, P.W.M.T., STORM DRAIN, RETAINING WALL ELEVATIONS, AND SDWK PRIOR TO CONST. NOTIFY ENGINEER OF ANY CONFLICTS
11. CONST. SIDEWALK UNDERDRAIN PER CCAUSD NO. 236
12. CONST. "A" TYPE MEDIAN CURB PER CCAUSD #219
13. CONST. DEPRESSED CURB PER CCAUSD #227
14. CONST. BLOCK WALL OPENING PER SECTION "C", SHEET D-4
15. CONST. 4" AC ON 4" TYPE II A.B ON 9" TYPE I, SEE SECTION "A", SHEET D-1
16. CONST. 4" AC ON 4" TYPE II A.B ON 6" TYPE I, SEE SECTION "C", SHEET D-3
17. CONST. 4" AC ON 4" TYPE II A.B ON 9" TYPE I, SEE SECTION "E", SHEET D-1
18. CONST. 3" AC ON 9" TYPE II A.B, SEE SECTION "B", SHEET D-1
19. CONST. 3" AC ON 9" TYPE II A.B, SEE SECTION "B", SHEET D-3
20. CONSTRUCT CONC. CUTOFF WALL PER SECTION "C", SHEET D-3
21. CONCRETE ENCASUREMENT PER UDACS SEC. 2.19
22. CONST. BLOCK WALL OPENING PER DETAIL "D" ON SHT. D-6

EASEMENT NOTES

1. 37' DRAINAGE EASEMENT, LVWD WATER EASEMENT, PUBLIC UTILITY EASEMENT (TO BE MAINTAINED BY H.O.A.) AND CLV PUBLIC SEWER EASEMENT
2. 20' DRAINAGE EASEMENT (TO BE MAINTAINED BY H.O.A.) AND CLV PUBLIC SEWER EASEMENT
3. DRAINAGE EASEMENT TO BE PRIVATELY MAINTAINED BY H.O.A. (SEE DIMENSION ON PLAN FOR EASEMENT WIDTH)

BENCHMARK
BENCHMARK FOUND CITY OF LAS VEGAS RIVET AND ROUND PLATE IN CONCRETE CYLINDER, SOUTHEAST CORNER OF ELKHORN RD AND CONQUISTADOR ST
BM NO. 66 STATION 8LV90 19NNW6 ELEVATION = 2803.77 (NAVD 88)

BASIS OF BEARING
THE BASIS OF BEARINGS FOR THIS SURVEY IS BASED ON THE FOUND AND HELD MONUMENTS MARKING THE SOUTHERLY LINE OF THE SOUTHWEST QUARTER (SW 1/4) OF THE SOUTHWEST QUARTER (SW 1/4) OF SECTION 13, T19S, R8E, HDM, CLARK COUNTY, NEVADA PER RECORD OF SURVEY BOOK 123, PAGE 32, CLARK COUNTY RECORDER'S OFFICE AS SOUTH 88°46'46" EAST

CLARK COUNTY DEPARTMENT OF DEVELOPMENT SERVICES
ACCEPTANCE OF PLANS FOR FILING

BY
ACCEPTANCE OF THESE PLANS FOR FILING SHALL NOT BE CONSTRUED TO BE A PERMIT FOR OR AN APPROVAL OF ANY VIOLATION OF ANY OF THE PROVISIONS OF THE STATE OR COUNTY LAWS AND/OR SPECIFICATIONS CLARK COUNTY SHALL BE HELD FREE FROM DAMAGES WHICH MAY RESULT FROM THE CONSTRUCTION OF THE IMPROVEMENTS FROM THE ENGINEERING DESIGN DEPICTED HEREIN

NOTE POWER POLES AND/OR OTHER EXISTING FACILITIES NOT IN PROPER LOCATION BASED ON PROPOSED IMPROVEMENTS SHOWN HEREIN WILL BE RELOCATED AT NO EXPENSE TO CLARK COUNTY

PROFILE
HOR : 1"=40'
VERT : 1"=4'

APPROVED FOR CONSTRUCTION
John F. Steadham 7-11-05
LAS VEGAS VALLEY WATER DISTRICT
PROJECT# H108887

KEY MAP

CENTERLINE CURVE TABLE

CURVE	LENGTH	RADIUS	DELTA	TANGENT
C134	116.72	1000.00	6°41'14"	58.42
C135	58.31	1000.00	3°20'28"	29.16

BACK OF CURB CURVE TABLE

CURVE	LENGTH	RADIUS	DELTA	TANGENT
C167	31.42	20.00	90°00'00"	20.00
C168	57.23	981.50	3°20'28"	28.63
C169	118.88	1018.50	6°41'14"	59.53
C183	114.56	981.50	6°41'14"	57.34
C184	59.39	1018.50	3°20'28"	29.70
C185	31.41	20.00	90°00'00"	20.00
C213	7.85	5.00	90°00'00"	5.00
C214	7.85	5.00	90°00'00"	5.00
C234	15.71	20.00	90°00'00"	20.31
C235	15.71	30.00	90°00'00"	8.04
C236	7.85	5.00	90°00'00"	5.00
C237	7.85	5.00	90°00'00"	5.00
C238	15.71	30.00	90°00'00"	8.04
C239	31.11	20.00	89°07'10"	19.69

AVOID HITTING OVERHEAD POWER LINES. IT'S COSTLY.
CALL BEFORE YOU DO OVERHEAD
1-702-227-2929

AVOID CUTTING UNDERGROUND UTILITY LINES. IT'S COSTLY.
Call before you Dig.
1-800-227-2600
UNDERGROUND SERVICE (USA)

SLATER HANIFAN GROUP
CONSULTING ENGINEERS & PLANNERS
5740 S. ARVILLE STREET #216, LAS VEGAS, NV 89118
PHONE (702) 284-5300 FAX (702) 284-5399

CLARK COUNTY, NEVADA

PINNACLE HOMES
SABLE CREEK
CATHEDRAL PINES PLAN AND PROFILE
VIA PROVENZA AVE PLAN AND PROFILE

SECTION 18
TOWNSHIP 19 SOUTH
RANGE 60 EAST, M.D.M.

DATE: 07/07/05
DRAFTER: DMB
DESIGNER: DMB
CHECKED: JTS
PROJECT NO.
PIN0402-001

PP-6
SHEET 19 OF 44
CLV DWG #307V930
CC HTE# 05-7995