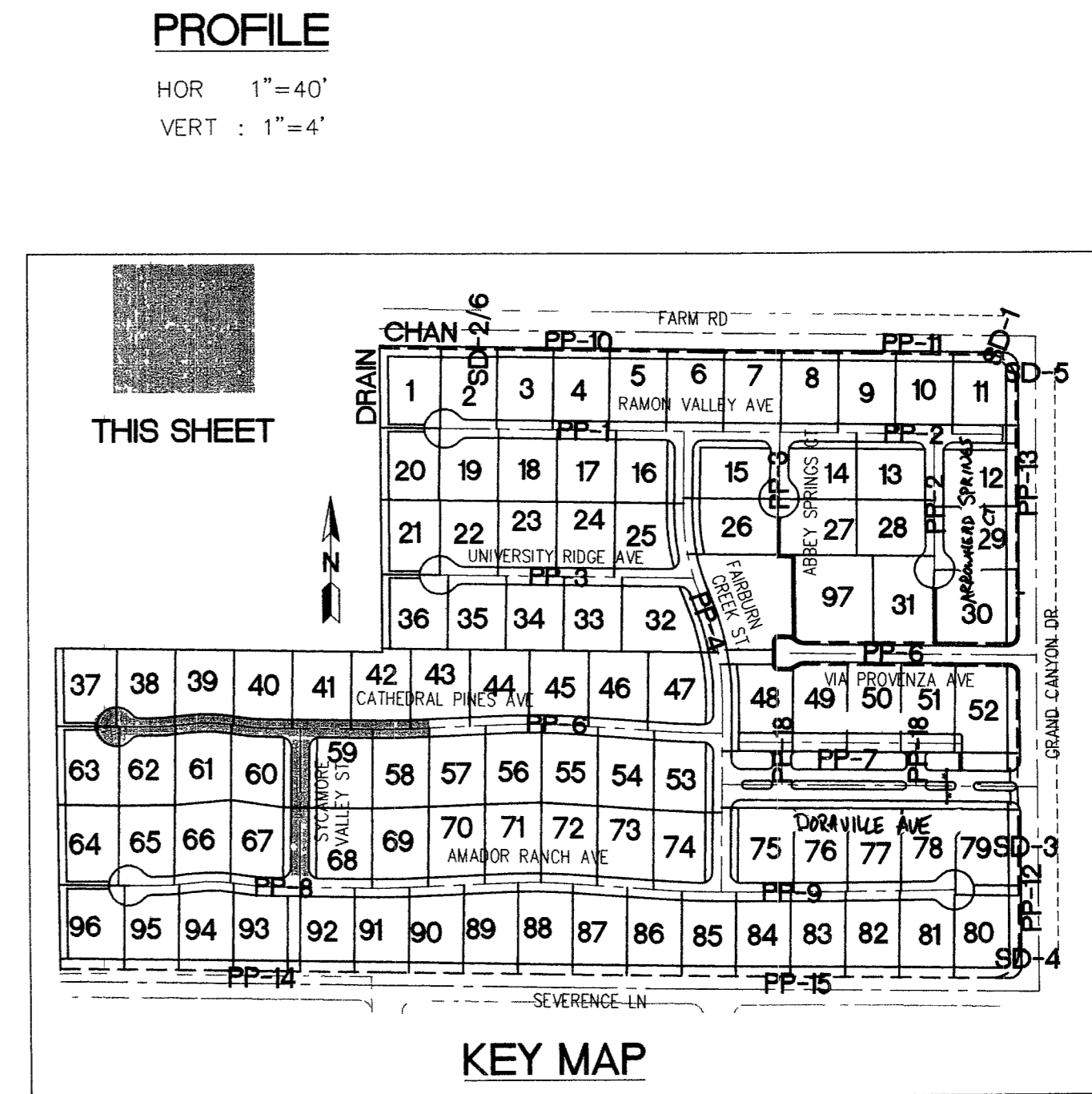


- ### CONSTRUCTION NOTES
- CONSTRUCT 8' WIDE CROSS CUTTER PER DETAIL CCAUSD #228 (SEE DETAIL ON SHEET D-2)
 - CONSTRUCT 4' WIDE BY 4" THICK SIDEWALK PER CCAUSD #234
 - CONSTRUCT SIDEWALK THICK USING ARMOR TILE TRUNCATED DOMES OR EQUIVALENT PER CCAUSD #235, CASE 1
 - CONSTRUCT ROLL CURB PER DETAIL CCAUSD #217A
 - CONSTRUCT "L" TYPE CURB PER CCAUSD #216
 - CONSTRUCT 2" AC ON 4" TYPE II AB ON 6" TYPE I OR NATIVE, SEE SECTION "C", SHEET D-1
 - SAW-CUT, REMOVE AND REPLACE EXISTING PAVEMENT PER PROP STREET SECTION
 - CONSTRUCT 10" TRANSITION FROM ROLL CURB TO "L" CURB SEE DETAIL "X", SHEET D-2
 - CONSTRUCT 5' WIDE BY 4" THICK SIDEWALK PER CCAUSD #234
 - CONTRACTOR TO VERIFY ELEV OF EXIST CURB AND CUTTER, PAVT, STORM DRAIN RETAINING WALL ELEVATIONS, AND SDWK PRIOR TO CONST. NOTIFY ENGINEER OF ANY CONTACTS
 - CONV-T SIDEWALK UNDERDRAIN PER CCAUSD NO. 236
 - CONST "A" TYPE MEDIAN CURB PER CCAUSD #219
 - CONV-T DEPRESSION CURB PER CCAUSD #227
 - CON-T BLOCK WALL OPENING PER SECTION "C", SHEET D-4
 - CONST 4" AC ON 4" TYPE II AB ON 9" TYPE I, SEE SECTION "A", SHEET D-1
 - CONST 4" AC ON 4" TYPE II AB ON 9" TYPE I, SEE SECTION "C", SHEET D-3
 - CONST 4" AC ON 4" TYPE II AB ON 9" TYPE I, SEE SECTION "E", SHEET D-1
 - CONST 3" AC ON 9" TYPE II AB, SEE SECTION "B", SHEET D-1
 - CONST 3" AC ON 9" TYPE II AB, SEE SECTION "B", SHEET D-3
 - CONSTRUCT CONC OUTFALL WALL PER SECTION "C", SHEET D-3
 - CONCRETE EASEMENT PER UDACS SEC 219
 - CONST BLOCK WALL OPENING PER DETAIL "D" ON SHT D-6



BENCHMARK

BENCHMARK FOUND CITY OF LAS VEGAS RIVET AND ROUND PLATE IN CONCRETE CYLINDER, SOUTHEAST CORNER OF ELKHORN RD AND CONQUISTADOR ST
BM NO 66 STATION BLV90 19NNW6 ELEVATION = 2803.77 (NAVD 88)

BASIS OF BEARING

THE BASIS OF BEARINGS FOR THIS SURVEY IS BASED ON THE FOUND AND HELD MONUMENTS MARKING THE SOUTHERLY LINE OF THE SOUTHWEST QUARTER (SW1/4) OF THE SOUTHEAST QUARTER (SE1/4) OF SECTION 13, T19S, R66E, W04M, CLARK COUNTY, NEVADA PER RECORD OF SURVEY BOOK 123, PAGE 32, CLARK COUNTY RECORDER'S OFFICE AS SOUTH 88°46'46" EAST

Call before you Dig.
1-800-227-2600
UNDERGROUND SERVICE (USA)

Call before you Dig.
1-702-455-7511
1-702-229-6611
UNDERGROUND SERVICE (USA)

Call before you Dig.
1-800-227-2600
UNDERGROUND SERVICE (USA)

Call before you Dig.
1-702-455-7511
1-702-229-6611
UNDERGROUND SERVICE (USA)

PROFILE

HOR : 1" = 40'
VERT : 1" = 4'

CLARK COUNTY DEPARTMENT OF DEVELOPMENT SERVICES
ACCEPTANCE OF PLANS FOR FILING

BY _____

ACCEPTANCE OF THESE PLANS FOR FILING SHALL NOT BE CONSTRUED TO BE A PERMIT FOR OR AN APPROVAL OF ANY VIOLATION OF ANY OF THE PROVISIONS OF THE STATE OR COUNTY LAWS AND/OR SPECIFICATIONS CLARK COUNTY SHALL BE HELD FREE FROM DAMAGES WHICH MAY RESULT FROM THE CONSTRUCTION OF THE IMPROVEMENTS FROM THE ENGINEERING DESIGN DEPICTED HEREIN

NOTE: POWER POLES AND/OR OTHER EXISTING FACILITIES NOT IN PROPER LOCATION BASED ON PROPOSED IMPROVEMENTS SHOWN HEREON WILL BE RELOCATED AT NO EXPENSE TO CLARK COUNTY

EASEMENT NOTES

- 37' DRAINAGE EASEMENT, LVWD WATER EASEMENT, PUBLIC UTILITY EASEMENT (TO BE MAINTAINED BY H.O.A.) AND CLV PUBLIC SEWER EASEMENT
- 20' DRAINAGE EASEMENT (TO BE MAINTAINED BY H.O.A.) AND CLV PUBLIC SEWER EASEMENT
- DRAINAGE EASEMENT TO BE PRIVATELY MAINTAINED BY H.O.A. (SEE DIMENSION ON PLAN FOR EASEMENT WIDTH)

CENTERLINE CURVE TABLE

CURVE	LENGTH	RADIUS	DELTA	TANGENT
C130	79.14	500.00	90°04'07"	39.65
C131	94.97	300.00	18°08'14"	47.88
C132	79.14	500.00	90°04'07"	39.65
C133	58.40	1000.00	32°04'46"	29.21
C138	79.14	500.00	90°04'07"	39.65

BACK OF CURB CURVE TABLE

CURVE	LENGTH	RADIUS	DELTA	TANGENT
C170	57.32	985.50	32°04'46"	28.67
C171	76.21	481.50	90°04'07"	38.18
C172	100.82	318.50	18°08'14"	50.84
C173	76.21	481.50	90°04'07"	38.18
C174	16.52	18.50	51°09'44"	8.86
C175	199.56	40.50	282°19'27"	32.61
C176	16.52	18.50	51°09'44"	8.86
C177	82.07	518.50	90°04'07"	41.12
C178	89.11	288.50	18°08'14"	44.93
C179	82.07	518.50	90°04'07"	41.12
C180	31.42	20.00	90°00'00"	20.00
C181	31.42	20.00	89°59'59"	20.00
C182	59.48	1018.50	32°04'46"	29.75
C186	31.42	20.00	90°00'00"	20.00
C207	31.42	20.00	90°00'00"	20.00

SLATER HANIFAN GROUP
CONSULTING ENGINEERS & PLANNERS
5740 S. ARVILLE STREET #216, LAS VEGAS, NV 89118
PHONE (702) 284-5300 FAX (702) 284-5399

SECTION 18
TOWNSHIP 9 SOUTH
RANGE 60 EAST, M.D.M.

CLARK COUNTY, NEVADA

PINNACLE HOMES

SABLE CREEK
CATHEDRAL PINES PLAN AND PROFILE
SYCAMORE VALLEY PLAN AND PROFILE

DATE: 07/07/05
DRAFTER: DMB
DESIGNER: DMB
CHECKED: JTS
PROJECT NO.
PIN0402-001

PROFESSIONAL ENGINEER - STATE OF NEVADA
TODD J. STEADHAM
Exp. 06/30/2006
No. 15297
CIVIL
7/6/05

PP-5
SHEET 18 OF 44
CLV DWG # 20719320
CC HTE# 05-7995