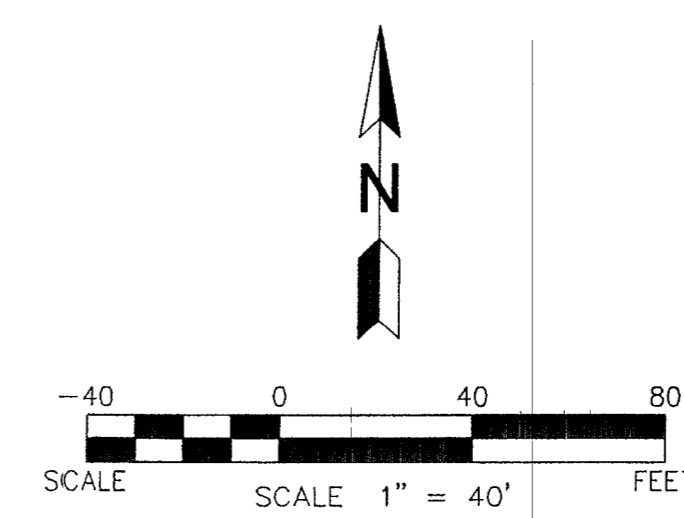
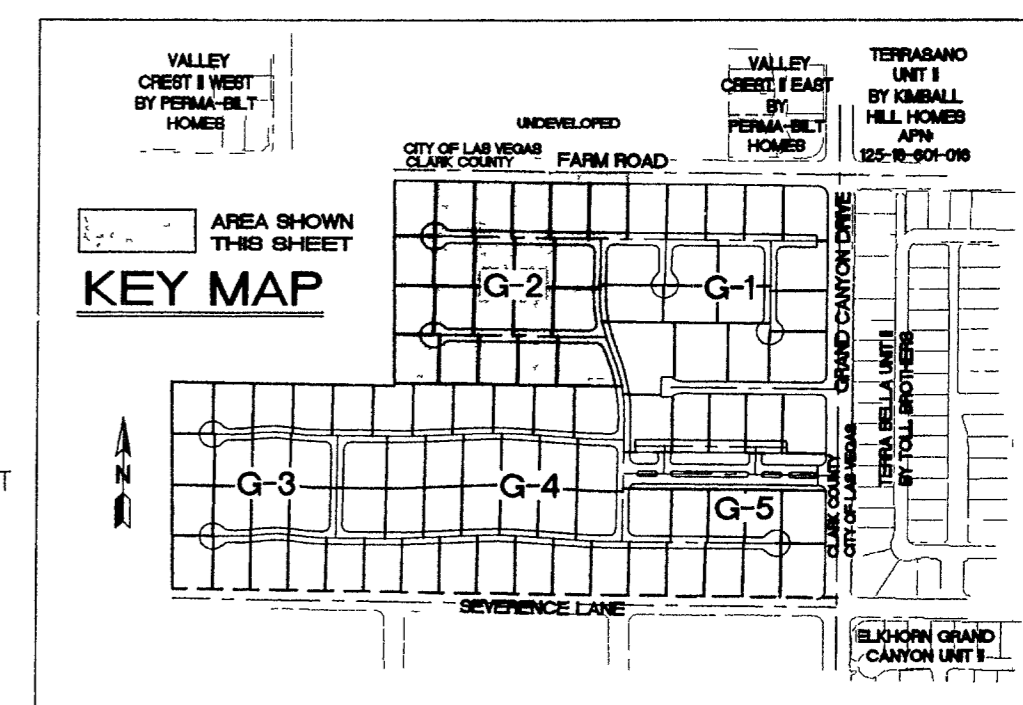
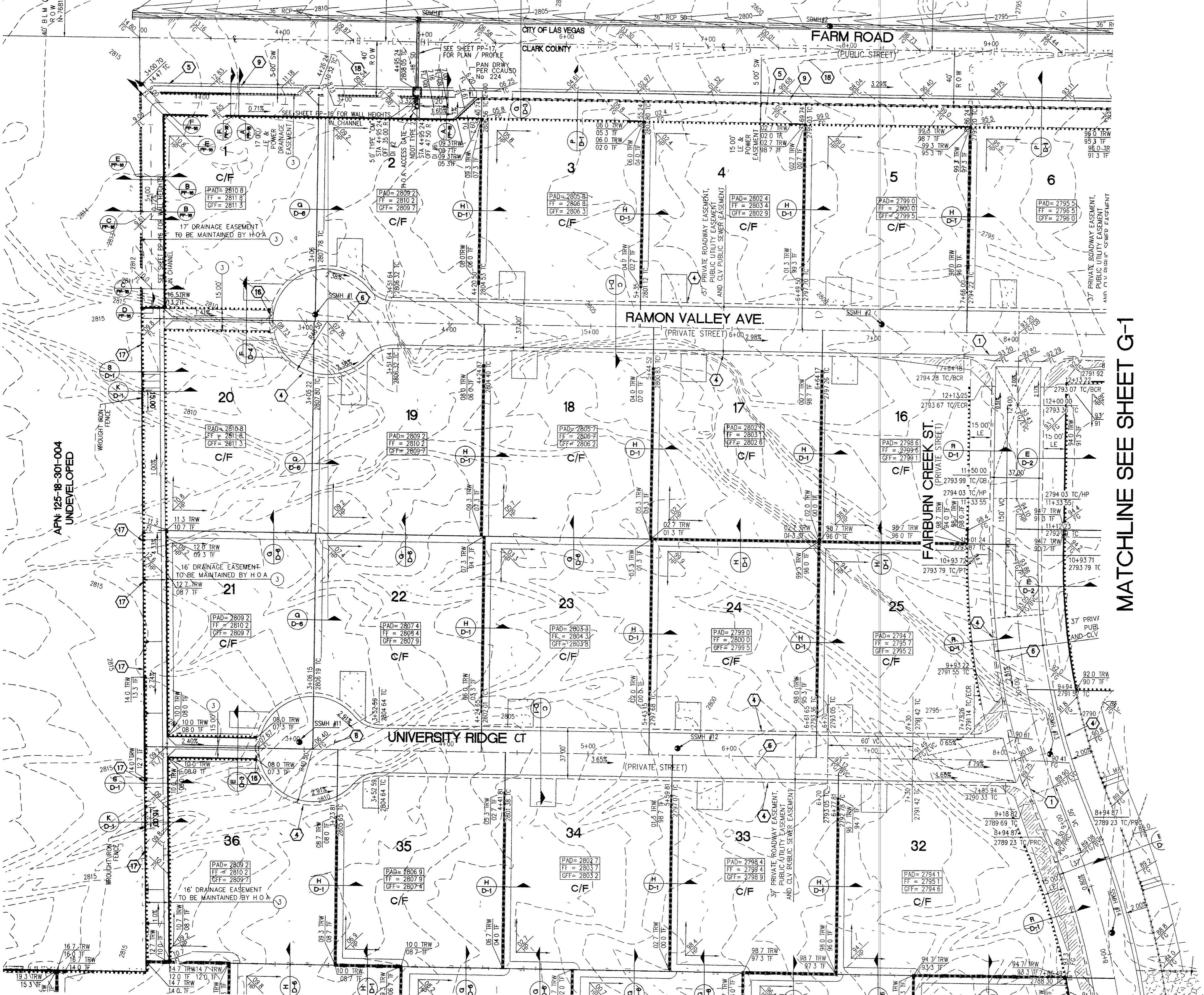


APN: 125-18-201-010  
UNDEVELOPED

U.S.A.  
APN: 125-18-201-010  
UNDEVELOPED



**SLATER HANIFAN GROUP**  
CONSULTING ENGINEERS & PLANNERS  
5740 S. ARVILLE STREET #216, LAS VEGAS, NV 89118  
PHONE: (702) 284-5300 FAX: (702) 284-5399

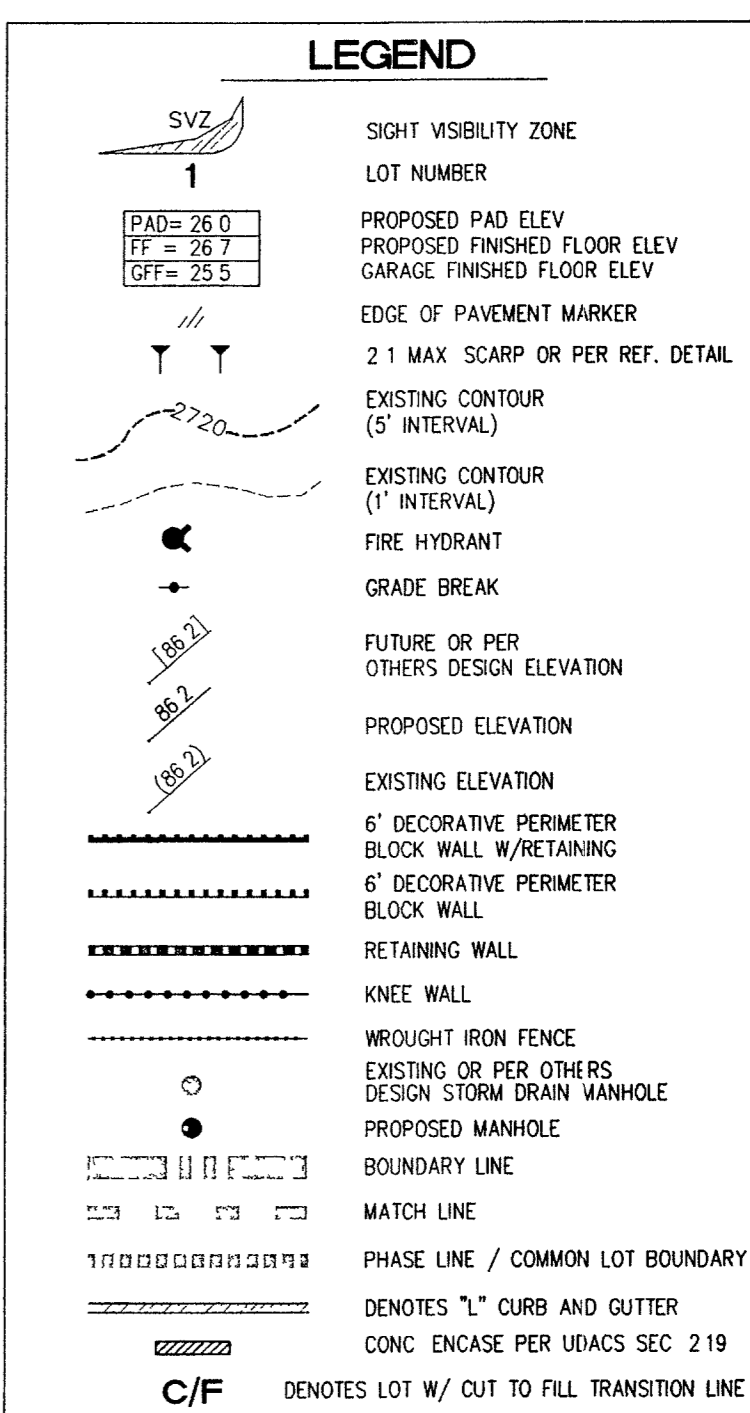


MATCHLINE SEE SHEET G-1

MATCHLINE SEE SHEET G-4

- LIST OF ABBREVIATIONS**
- AC ASPHALTIC CONCRETE
  - CL CENTER LINE
  - FG FINISH GRADE
  - FL FLOW LINE
  - GB GRADE BREAK
  - HP HIGH POINT
  - LE LANDSCAPE EASEMENT
  - LF LINEAR FEET
  - LP LOW POINT
  - PAE PED ACCESS EASEMENT
  - PC POINT OF CURVATURE
  - PRC POINT OF REVERSE CURVE
  - PT POINT OF TANGENCY
  - PL PROPERTY LINE
  - R/W RIGHT OF WAY
  - R/W RIGHT OF WAY
  - STA STATION
  - TC TOP OF CURB
  - TF TOP OF FOOTING
  - TDF TOP DECK WALL FOOTING
  - TRW TOP OF RETAINING WALL
  - VC VERTICAL CURVE

- NOTES**
- 1 SECTION 2 OF THE CLARK COUNTY BUILDING OFFICE OPERATIONS DIVISION DRAINAGE COMPLIANCE REF. JET MUST BE COMPLETED BY THE ENGINEER AND SUBMITTED TO DEVELOPMENT SERVICES INSPECTION SCHEDULING, FOR ALL WESTERN COLLECTION CHANNELS AND DRAINAGE EASEMENTS, PRIOR TO PAD GRADING INSPECTIONS FOR THE ENTIRE SITE.
  - 2 ROW FOR JENSEN STREET AND VIA PROVENZA AVENUE SHALL BE VACATED BY VS-0948-04
  - 3 CONSTRUCT ALL STREET INTERSECTIONS PER CCAUSD #225
  - 4 REF SOILS REPORT BY OWENS, No E-04-296, DATED 10/11/04



- CONSTRUCTION NOTES**
- 1 CONSTRUCT 8" WIDE CROSS CUTTER PER DETAIL CCAUSD #228. (SEE DETAIL ON SHEET D-2)
  - 2 CONSTRUCT 4" WIDE BY 4" THICK SIDEWALK PER CCAUSD #234
  - 3 CONSTRUCT SIDEWALK RAMP USING ARMOR TILE TRUNCATED DOMES OR EQUIVALENT PER CCAUSD #235, CASE I.
  - 4 CONSTRUCT ROLL CURB PER DETAIL CCAUSD #217A
  - 5 CONSTRUCT "L" TYPE CURB PER CCAUSD #216
  - 6 CONSTRUCT 2" AC ON 4" TYPE II A/B ON 6" TYPE I OR NATHE, SEE SECTION "C", SHEET D-1
  - 7 SAWCUT, REMOVE AND REPLACE EXISTING PAVEMENT PER PROP. STREET SECTION
  - 8 CONSTRUCT 10" TRANSITION FROM ROLL CURB TO "L" CURB SEE DETAIL "X", SHEET D-2
  - 9 CONSTRUCT 5" WIDE BY 4" THICK SIDEWALK PER CCAUSD #234
  - 10 CONTRACTOR TO VERIFY ELEV OF EXIST CURB AND CUTTER, PAVT, STORM DRAIN, RETAINING WALL ELEVATIONS, AND SDWK PRIOR TO CONST. NOTIFY ENGINEER OF ANY CONFLICTS
  - 11 CONST SIDEWALK UNDERDRAIN PER CCAUSD NO 236
  - 12 CONST "A" TYPE MEDIAN CURB PER CCAUSD #219
  - 13 CONST DEPRESSIONED CURB PER CCAUSD #227
  - 14 CONST BLOCK WALL OPENING PER SECTION "C", SHEET D-1
  - 15 CONST 4" AC ON 4" TYPE II A/B ON 9" TYPE I, SEE SECTION "A", SHEET D-1
  - 16 CONST 4" AC ON 4" TYPE II A/B ON 9" TYPE I, SEE SECTION "C", SHEET D-3
  - 17 CONST 4" AC ON 4" TYPE II A/B ON 9" TYPE I, SEE SECTION "E", SHEET D-1
  - 18 CONST 3" AC ON 9" TYPE II A/B, SEE SECTION "B", SHEET D-1
  - 19 CONST 3" AC ON 9" TYPE II A/B, SEE SECTION "B", SHEET D-3
  - 20 CONSTRUCT CONC. CUTOFF WALL PER SECTION "C", SHEET D-3
  - 21 CONCRETE ENCASUREMENT PER UDACS SEC 2 19
  - 22 CONST BLOCK WALL OPENING PER DETAIL "D" ON SHT D-6

**BENCHMARK**  
BENCHMARK: FOUND CITY OF LAS VEGAS RIVET AND ROUND PLATE IN CONCRETE CYLINDER, SOUTHEAST CORNER OF ELKHORN RD AND CONQUISTADOR ST  
BM NO 66 STATION 8LV90 19NNW6 ELEVATION = 2803.77 (NAVD 88)

**BASIS OF BEARING**  
THE BASIS OF BEARINGS FOR THIS SURVEY IS BASED ON THE FOUND AND HELD MONUMENTS MARKING THE SOUTHERLY LINE OF THE SOUTHWEST QUARTER (SW/4) OF THE SOUTHEAST QUARTER (SE1/4) OF SECTION 13, 119S, R60E, M0M, CLARK COUNTY, NEVADA PER RECORD OF SURVEY BOOK 123, PAGE 32, CLARK COUNTY RECORDER'S OFFICE AS SOUTH 88°46'46" EAST

- EASEMENT NOTES**
- 1 37" DRAINAGE EASEMENT, L/VWD WATER EASEMENT, PUBLIC UTILITY EASEMENT (TO BE MAINTAINED BY H.O.A.) AND CLV PUBLIC SEWER EASEMENT
  - 2 DENOTES AREA TO BE COVERED BY (1) EASEMENT CALLOUT
  - 3 20" DRAINAGE EASEMENT (TO BE MAINTAINED BY H.O.A.) AND CLV PUBLIC SEWER EASEMENT
  - 4 DRAINAGE EASEMENT TO BE PRIVATELY MAINTAINED BY H.O.A. (SEE DIMENSION ON PLAN FOR EASEMENT WIDTH)

**DROP INLET NOTE**  
1 PROVIDE STANDARD MANHOLE STEPS TO ALL TYPE "CM" DROP INLETS PER CCAUSD DWG NO 410

Avoid cutting underground utility lines. It's costly.  
**Call before you Dig.**  
1-800-227-2600  
UNDERGROUND SERVICE (USA)

**FLOOD ZONE NOTE**  
THE PROJECT AREA IS LOCATED WITHIN A FEMA ZONE X PER FLOOD INSURANCE RATE MAP PLAN 32003C1745E, DATED SEPTEMBER 27, 2002

CLARK COUNTY DEPARTMENT OF DEVELOPMENT SERVICES  
ACCEPTANCE OF PLANS FOR FILING

BY *Jack D. Steadham 6/27/05*  
TODD J. STEADHAM  
Exp. 06/30/2008  
CIVIL ENGINEER No. 15293

ACCEPTANCE OF THESE PLANS FOR FILING SHALL NOT BE CONSTRUED TO BE A PERMIT FOR OR AN APPROVAL OF ANY VIOLATION OF ANY OF THE PROVISIONS OF THE STATE OR COUNTY LAWS AND/OR SPECIFICATIONS CLARK COUNTY SHALL BE HELD FREE FROM DAMAGES WHICH MAY RESULT FROM THE CONSTRUCTION OF THE IMPROVEMENTS FROM THE ENGINEERING DESIGN DEPICTED HEREIN

NOTE: POWER POLES AND/OR OTHER EXISTING FACILITIES NOT IN PROPER LOCATION BASED ON PROPOSED IMPROVEMENTS SHOWN HEREON WILL BE RELOCATED AT NO EXPENSE TO CLARK COUNTY

NO.	DESCRIPTION	DATE	BY	APP.

CLARK COUNTY, NEVADA

**PINNACLE HOMES**  
**SABLE CREEK**  
**GRADING PLAN II**

SECTION 18  
TOWNSHIP 19 SOUTH  
RANGE 60 EAST, M.D.M.

DATE: 06/20/05  
DRAFTER: JR/JB/DB  
DESIGNER: TS/JB/DB  
CHECKED: TS  
PROJECT NO.  
**PIN0402-001**

**ENGINEER**  
TODD J. STEADHAM  
Exp. 06/30/2008  
CIVIL ENGINEER No. 15293

**G-2**  
SHEET 33 OF 44  
CLV DWG #3071V 930  
CC HFE 05-7995

File: J:\PIN0402-001\Drawings\Grading\Grading.dwg Jun 20, 2005 - 13:41

81760